

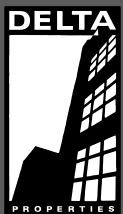
# 633 W MAIN ST

633 W MAIN STREET MADISON WI, 53703



**AVAILABLE: 8/1/2024**  
**SIZE : 2,319 - 7,804 SF**

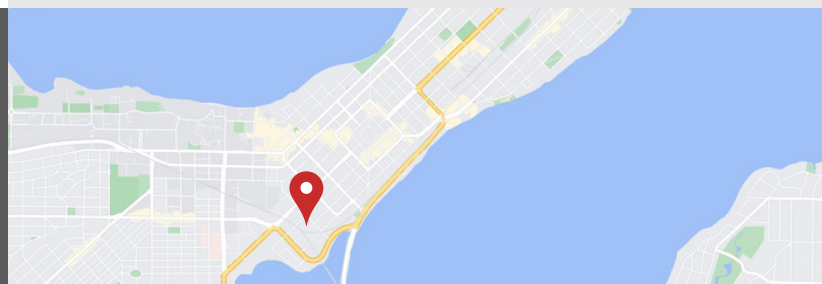
- 15 PRIVATE OFFICES
- 2 CONFERENCE ROOMS
- 19 WORK STATIONS
- BARREL VAULTED CEILING, EXPOSED DUCT WORK, AND SKYLIGHTS
- AMPLE SURFACE PARKING
- IMMEDIATE BIKE PATH ACCESS
- OPERABLE WINDOWS
- ONSITE MANAGEMENT
- SHOWER FACILITIES
- OUTDOOR SEATING
- MODIFICATIONS TO EXISTING LAYOUT ARE POSSIBLE



(608)251-3337

JUDY@DELTA-PROPERTIES.COM

WWW.DELTA-PROPERTIES.COM

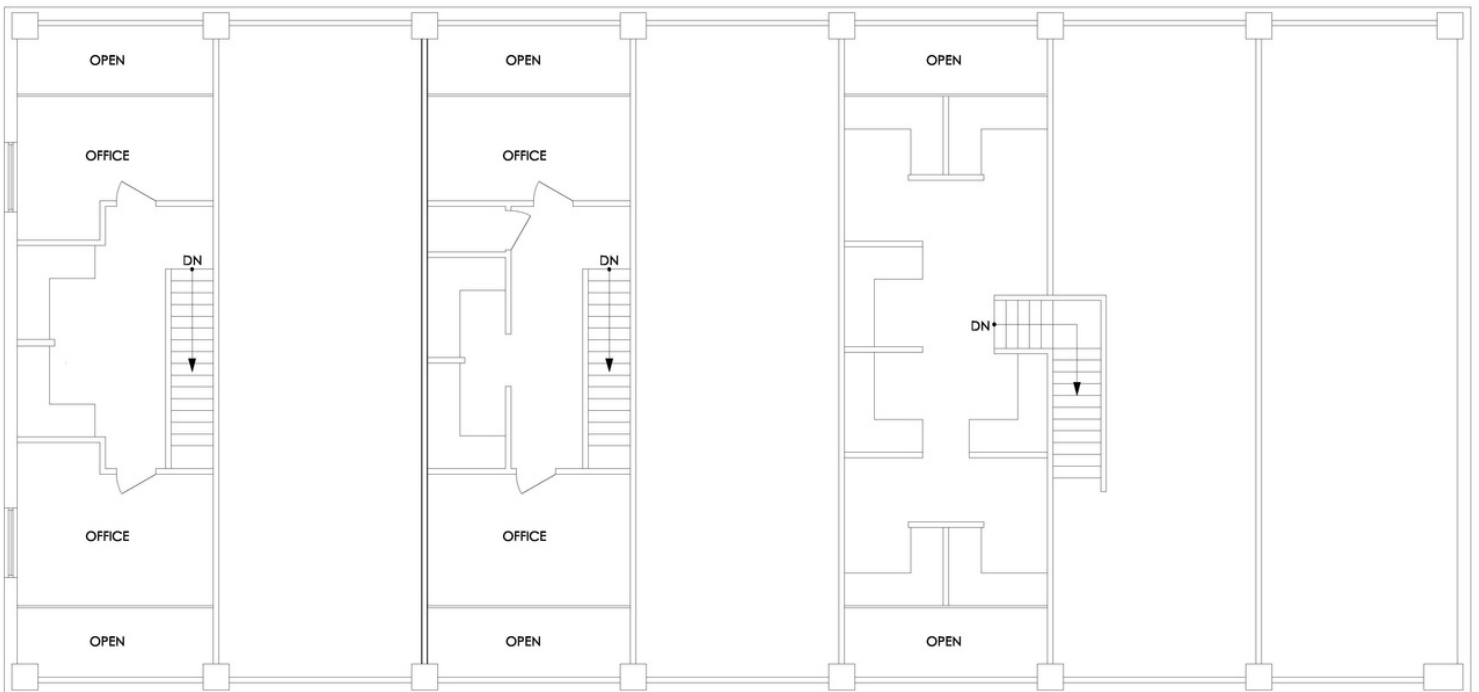


# 633 W MAIN ST

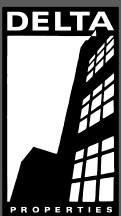
633 W MAIN STREET MADISON WI, 53703



EXISTING FL-1



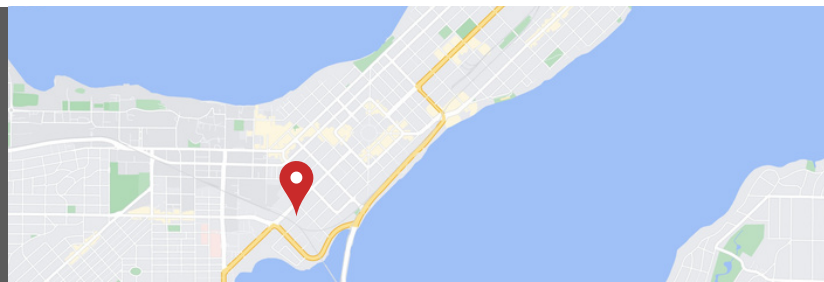
EXISTING FL-2



(608)251-3337

JUDY@DELTA-PROPERTIES.COM

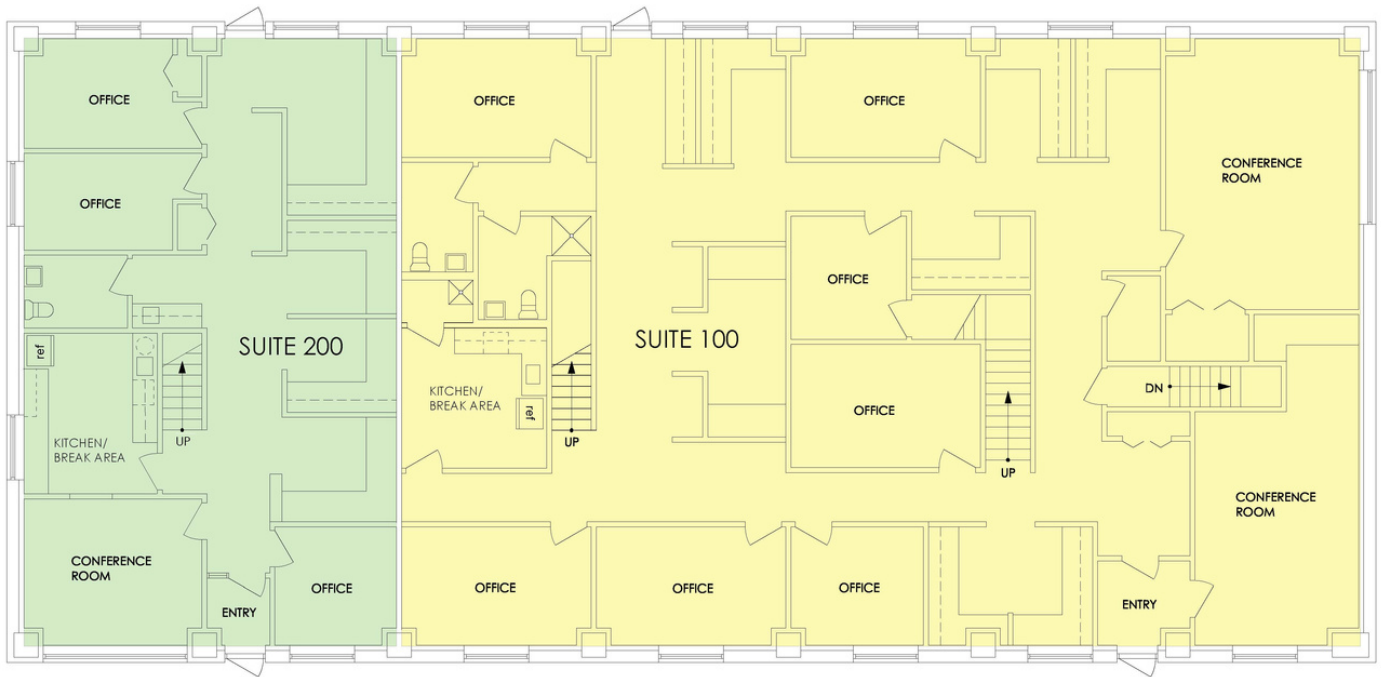
WWW.DELTA-PROPERTIES.COM



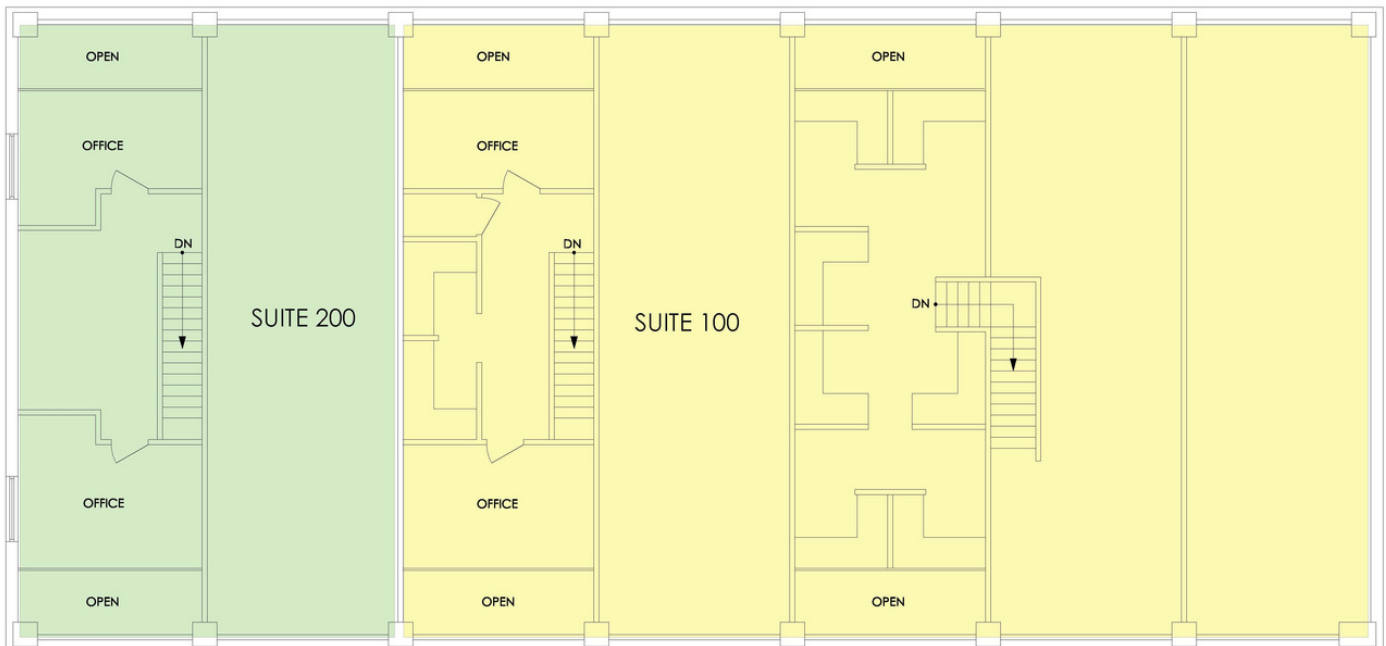
# 633 W MAIN ST

633 W MAIN STREET MADISON WI, 53703

## DIVIDED FLOORPLAN



FLOOR 1



MEZZANINE



(608)251-3337

JUDY@DELTA-PROPERTIES.COM

WWW.DELTA-PROPERTIES.COM

