



CUSHMAN &
WAKEFIELD

BOERKE



HOVDE BUILDING

**WEST
WASHINGTON
AVE**

Madison, Wisconsin

JIM CAVANAUGH

Principal

+1 414 253 3950

jcavanaugh@boerke.com

KATIE BRUESKE

Real Estate Advisor

+1 518 956 1717

kbrueske@boerke.com

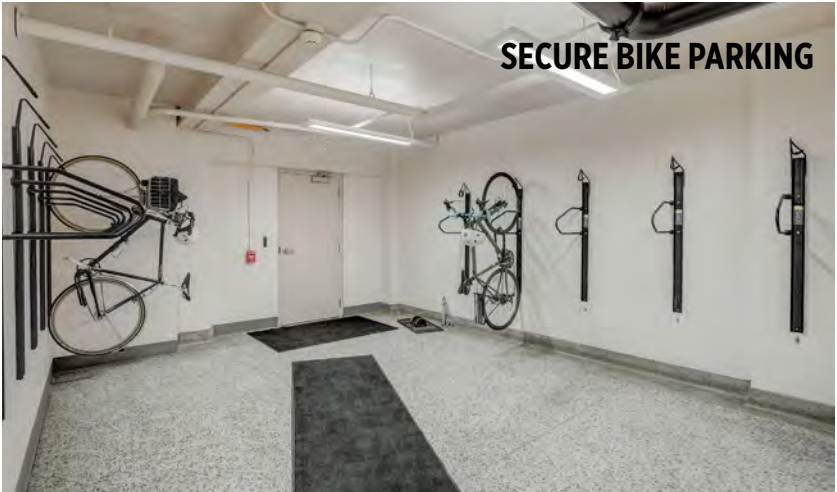


BOERKE



HOVDEPROPERTIES





HIGHLIGHTS

CAPITOL VIEWS

Breathtaking views of the Wisconsin State Capitol

MODERN AMENITIES

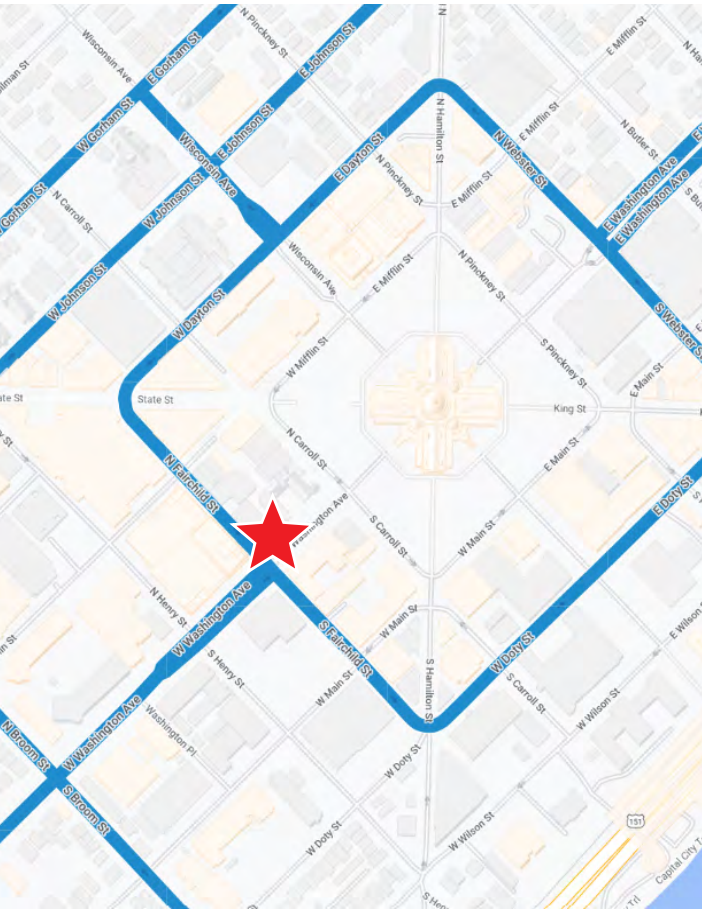
Offering access to shared Hovde Amenities including fitness center, showers with lockers, and secure bike parking.

CONVENIENCE

Located one block off of the square with many shops and restaurants nearby.

PARKING

Covered and surface parking available nearby



ABOUT THE BUILDING

Home to the Hovde offices, the Hovde Building has been maintained and restored with expert craftsmanship and attention to detail. Located less than a block from Capitol Square, the Hovde Building boasts magnificent Capitol views, a large common conference room, shower and locker facilities and secure bike parking. The Hovde Building is a perfect combination of historical charm and modern amenities.

LEASE RATE: \$26.50/RSF MG
+ELECTRIC (\$1.50/SF)



PRIME DOWNTOWN MADISON LOCATION

#1 Unparalleled access
to a thriving business
community

#3 Vibrant Energy
with many cultural
establishments nearby

#2 Renowned Dining
establishments within a
few block radius

#4 Excellent Walkability
with a walk score of 97

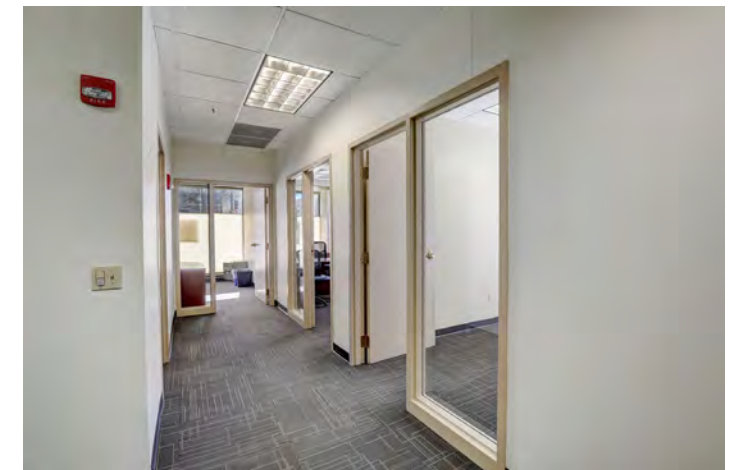
AVAILABILITIES

SUITE 101 2,431 RSF

SUITE 201 1,756 RSF

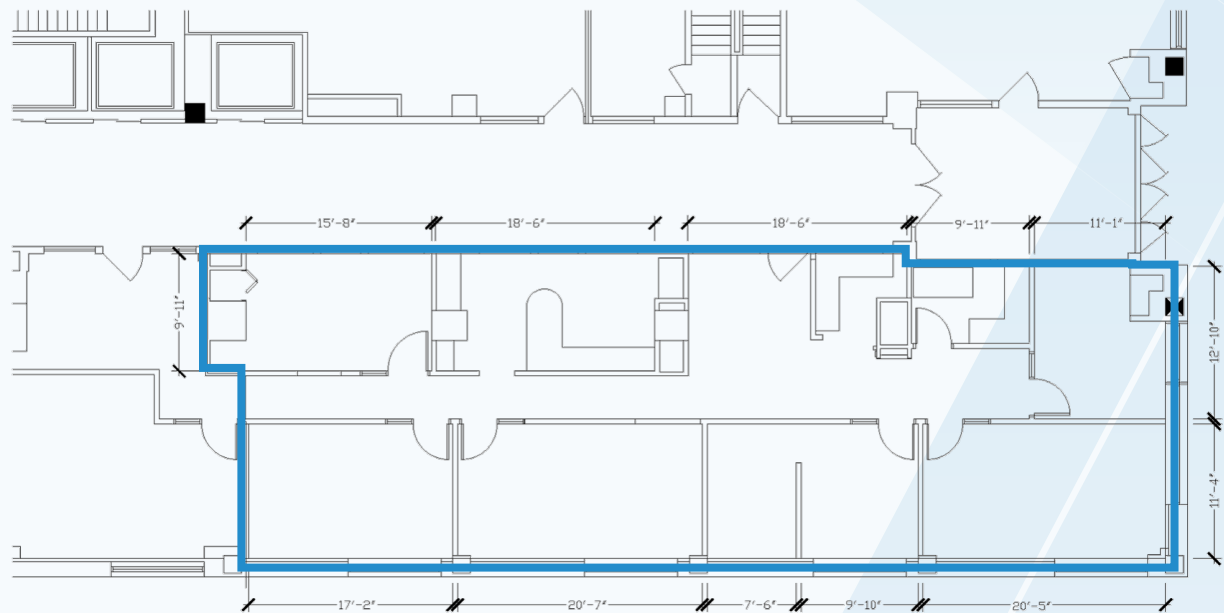
SUITE 105 503 SF

SUITE 530 1,493 RSF



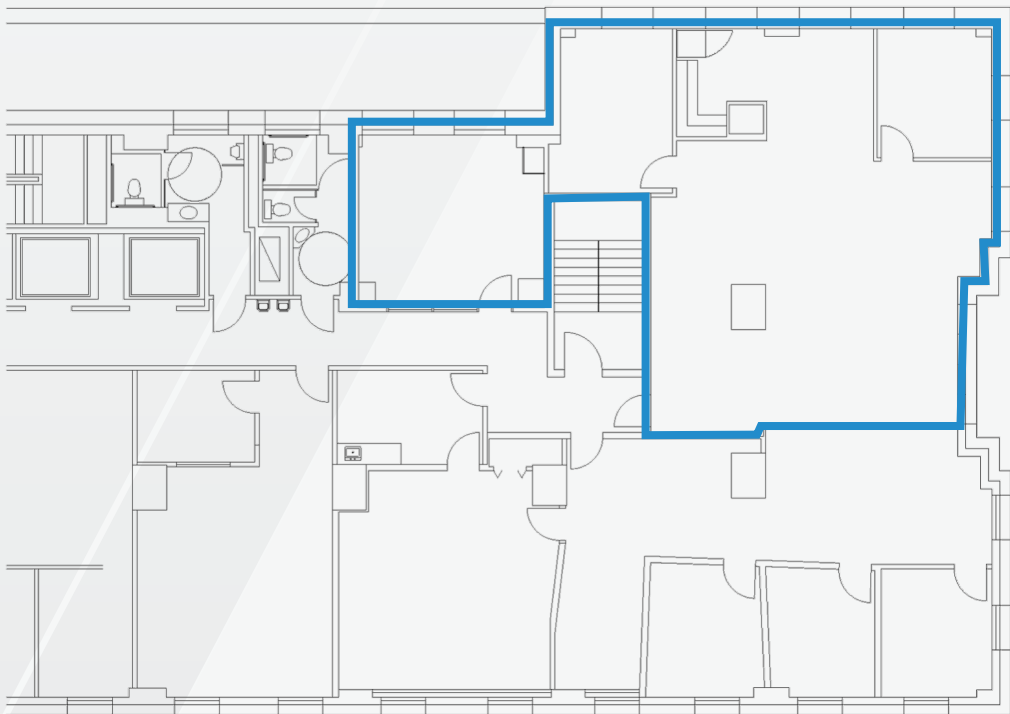
1ST FLOOR SUITE 101

AVAILABLE:
2,431 RSF



2ND FLOOR SUITE 201

AVAILABLE:
1,756 RSF



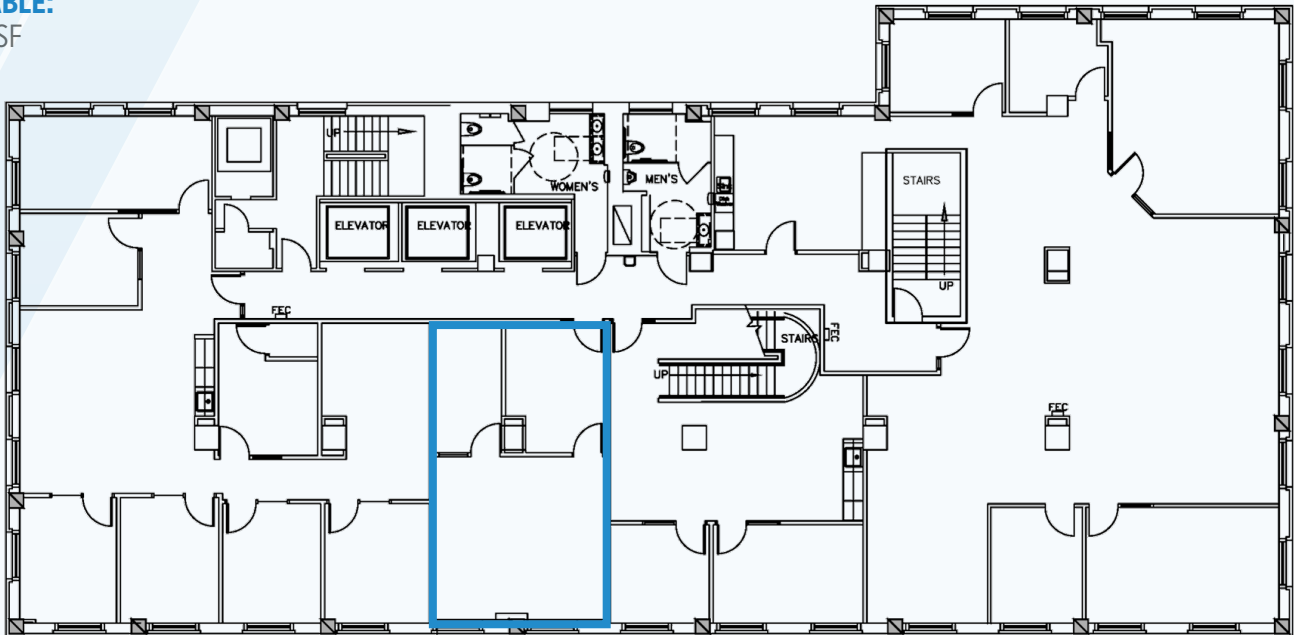
1ST FLOOR SUITE 105

AVAILABLE:
503 SF



5TH FLOOR SUITE 530

AVAILABLE:
1,493 RSF





CONTACT INFORMATION

JIM CAVANAUGH Principal

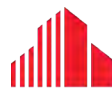
+1 414 253 3950

jcavanaugh@boerke.com

KATIE BRUESKE Real Estate Advisor

+1 518 956 1717

kbrueske@boerke.com



**CUSHMAN &
WAKEFIELD**

BOERKE



HOVDEPROPERTIES

MADISON OFFICE

33 E Main St
Suite 241
Madison, WI 53703

MILWAUKEE OFFICE

731 E Jackson St
Suite 700
Milwaukee, WI 53202