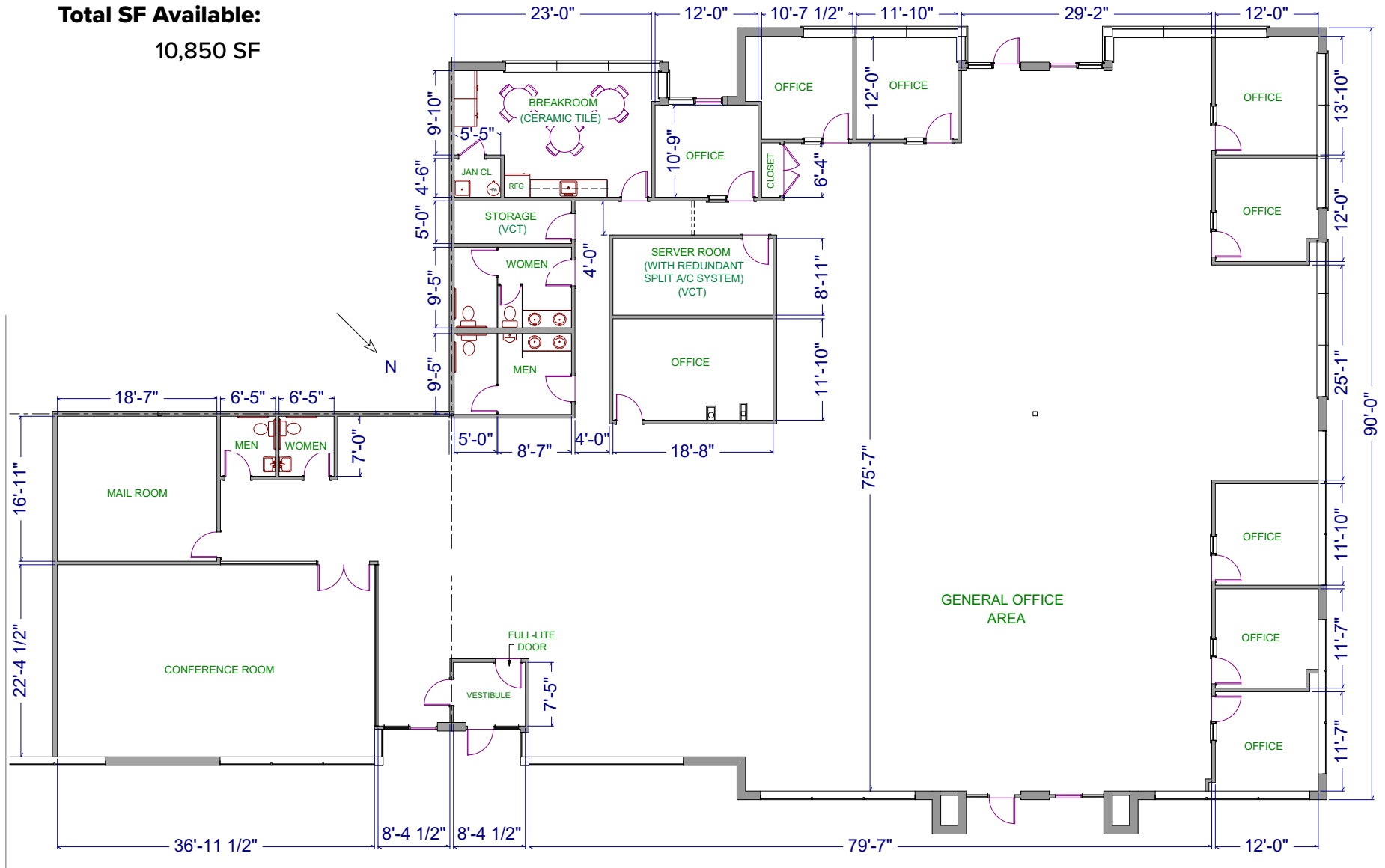


**Total SF Available:**  
10,850 SF



*Note: This space plan is subject to existing field conditions. This drawing is proprietary and the exclusive property of St. John Properties, Inc. Any duplications, distribution, or other unauthorized use is strictly prohibited.*



# Madison East Business Center

4602, 4610 & 4618 South Biltmore Lane and  
5202 Eastpark Boulevard

Madison, WI 53718

Madison East Business Center consists of four single story office buildings totaling 111,075 square feet designed within a campus-style setting. The center is located within American Center Business Park and is highly visible.



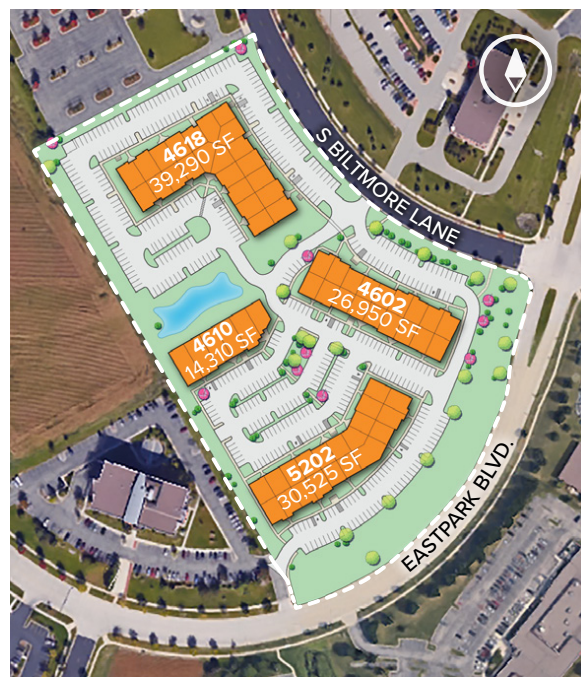
## Single-Story Office/Retail

### Single-Story Office/Retail Buildings

4602 South Biltmore Lane	26,950 SF
4610 South Biltmore Lane	14,310 SF
4618 South Biltmore Lane	39,290 SF
5202 Eastpark Boulevard	30,525 SF

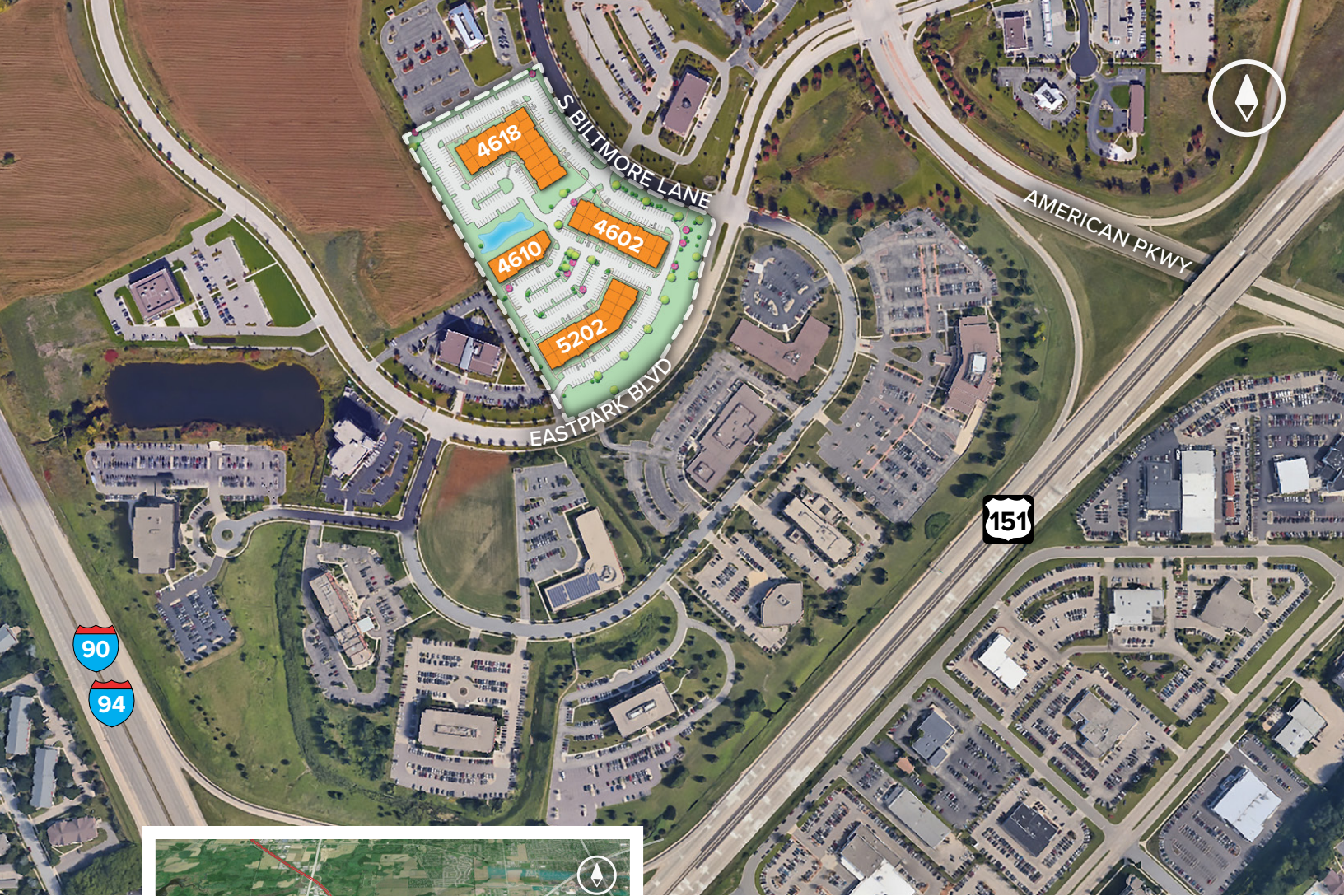
### Single-Story Office/Retail Specifications

Parking	4.2 per 1,000 SF
Heat	Natural Gas
Roof	EPDM rubber
Exterior Walls	Masonry
Zoning	SEC



For more information on  
Madison East Business Center,  
visit: [sjpi.com/madisoneast](http://sjpi.com/madisoneast)





**For additional leasing information  
or to schedule a tour, contact:**

**Gregory Fax**  
Regional Partner, Wisconsin  
262.524.0100  
gfax@sjpi.com

**About St. John Properties**

St. John Properties, Inc. is a full-service real estate company headquartered in Baltimore, Maryland. The company owns, manages and has developed more than 20 million square feet of commercial real estate, including office, flex/R&D, warehouse, retail and residential space.



1020 James Drive | Suite G  
Hartland, WI 53029

608.223.0100 | SJPI.COM/WISCONSIN  
MD | CO | LA | NV | PA | UT | VA | WI

Connect with us @stjohnprop    



*This information contained in this publication has been obtained from sources believed to be reliable. St. John Properties makes no guarantee, warranty or representation about this information. Any projections, opinions, assumptions or estimates used here are for example only and do not represent the current or future performance of the property. Interested parties should conduct an independent investigation to determine whether the property suits their needs. REV 06/20*