

# Madison Enterprise Center

100 S Baldwin St, Madison, WI 53703

A start-up & expanding small business incubator in the heart of Madison's East side



## Suite 306

\$11 per Sq Ft

Available 7/1/2024



### Suite Information:

- ◇ 707 Square Feet
- ◇ Interior space with double entry doors
- ◇ 3rd floor location
- ◇ Large window

### About the Madison Enterprise Center:

- ⇒ 1st Stage Incubator
- ⇒ Exciting entrepreneurial community
- ⇒ Networking events
- ⇒ Affordable rent
- ⇒ High speed fiber Internet access included in rent
- ⇒ Connections with potential Funding Opportunities
- ⇒ On-site manager
- ⇒ Conference room
- ⇒ On-site parking
- ⇒ Business assistance & referral services

**Central City Location:** 100 S. Baldwin St - 1.5 miles east of the Capitol in the heart of the vibrant Williamson-Marquette neighborhood and the Capitol East District.

gas-fired furnaces and air conditioning units. Tenants pay utilities.

**Electrical Service:** 3-phase 1300 amp service 120-volt power (230-volt power available)

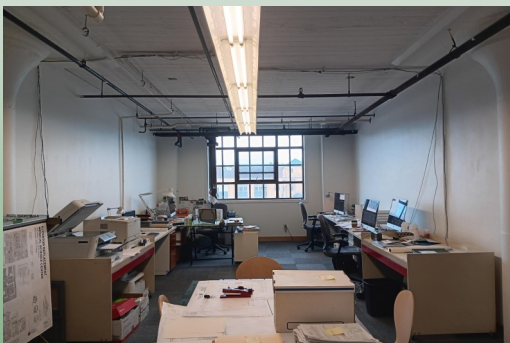
**Water:** Suites have cold water service.

**Loading Dock:** Loading area can accommodate semi truck deliveries. A forklift & material handling equipment is available. Freight elevator has 4,000 lb. capacity.

**How to Apply:** Businesses that are less than 5 years old, produce a product or provide a service and that have potential for job creation are eligible. To apply please submit an application along with a business plan. Applicants are invited to attend a Business Development Committee meeting where the application and business plan are reviewed. The Business Development Committee makes all acceptance decisions.

### Facility Information

**Heating & Cooling:** Suites are equipped with energy efficient



Contact Brendan for more details about this wonderful opportunity!

(608) 438-6804 or email: [Brendan@cwd.org](mailto:Brendan@cwd.org)