

SUITE 302

612 W MAIN STREET MADISON WI, 53703

AVAILABLE: NOW
SIZE : 1,595 RSF

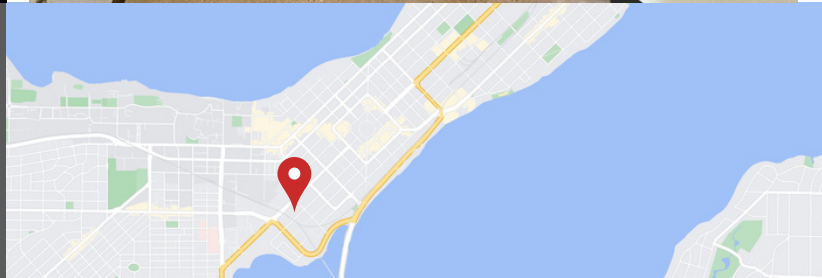
- 4-5 PRIVATE OFFICES
- 1 CONFERENCE ROOM
- OPEN WORK AREA, KITCHEN & RECEPTION
- AMPLE SURFACE PARKING & INDOOR BIKE PARKING
- IMMEDIATE BIKE PATH ACCESS
- SHOWER FACILITIES
- OPERABLE WINDOWS
- ADA ACCESSIBLE
- ON-SITE MANAGEMENT



(608)251-3337

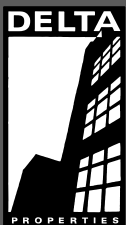
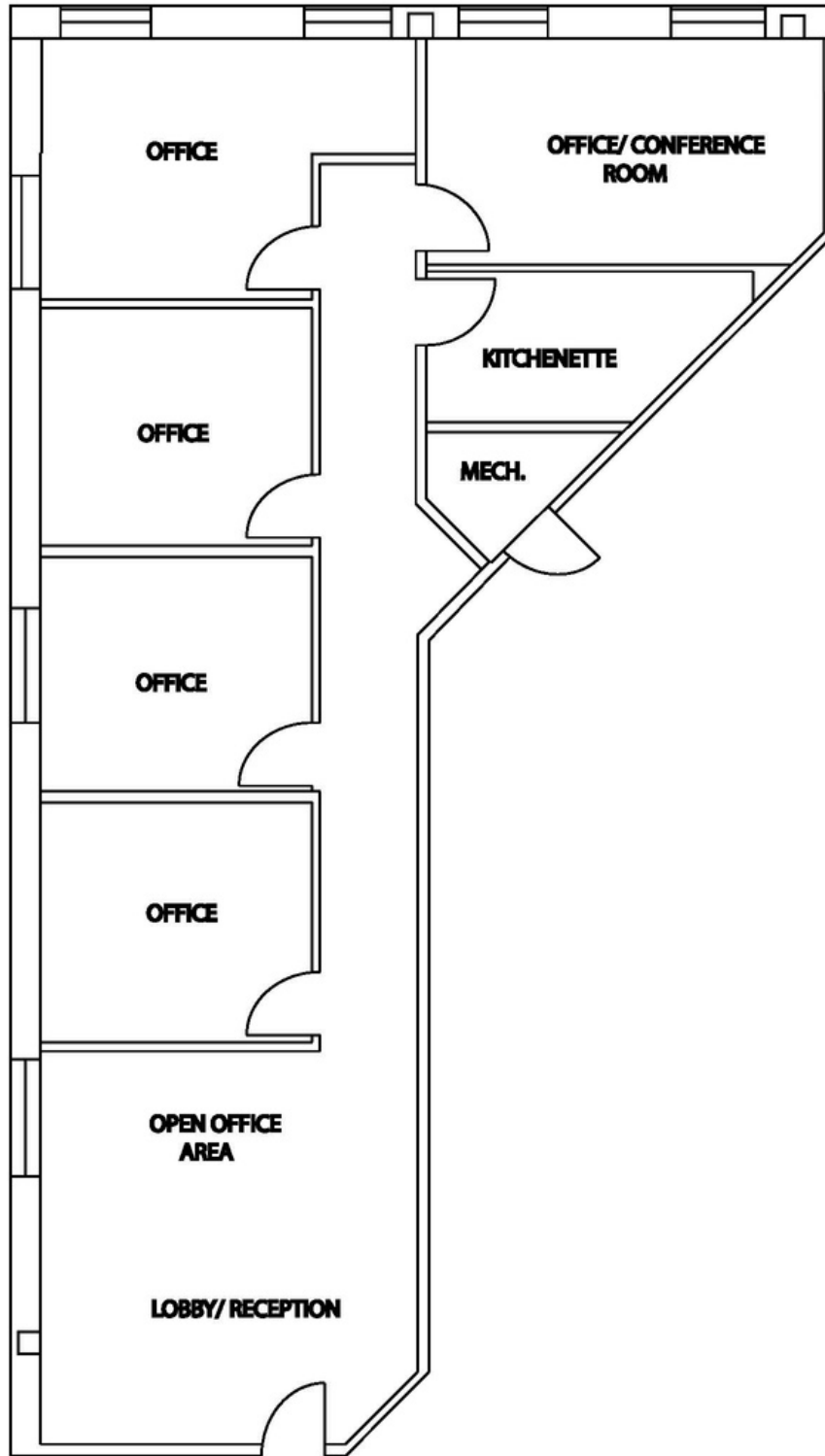
JUDY@DELTA-PROPERTIES.COM

WWW.DELTA-PROPERTIES.COM



SUITE 302

612 W MAIN STREET MADISON WI, 53703



(608)251-3337

JUDY@DELTA-PROPERTIES.COM

WWW.DELTA-PROPERTIES.COM

