

High Floor

Class-A Office Space on the 9th Floor
Flexible and Collaborative Areas

8401 Greenway Blvd., 9th Floor
Middleton, WI (Madison)

Wisconsin Trade Center



Wisconsin Trade Center

8401 Greenway Blvd, 9th Floor | Middleton, WI



The Space

Agile and reconfigurable space

Located on the 9th floor, this office environment has it all. This flexible tech-like space is now available for sub-lease at a below market rate. The approx. 7,000+/- sq ft work environment has a dynamic and nimble floor plan that will support your organizations objectives and employee needs-today and tomorrow.

The sub-lease opportunity has a lease expiration date of December 31, 2026. Please contact Brian Wolff to learn more about the space, the economics and how we can make it work for your needs.

Excellent Value

When you factor in the cost of construction alone, this opportunity provides a company the ability to use their capital grow their business even further.

7K

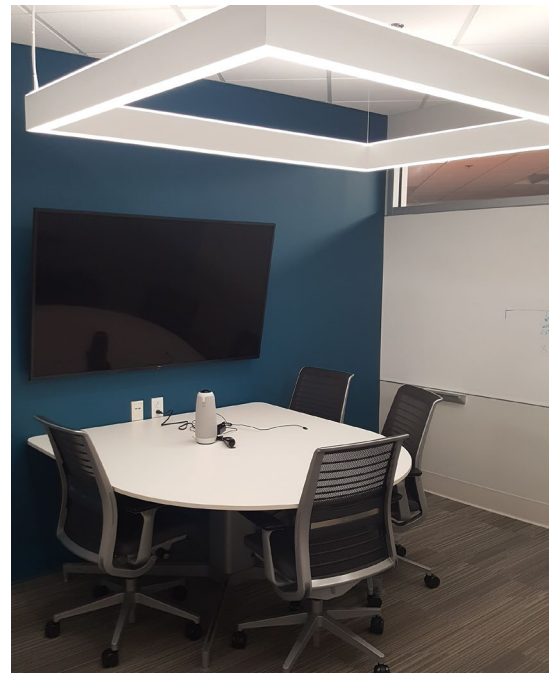
Square Feet of Space

\$16

Sub-Lease Rate Per SF + NNN

Wisconsin Trade Center

8401 Greenway Blvd, 9th Floor | Middleton, WI

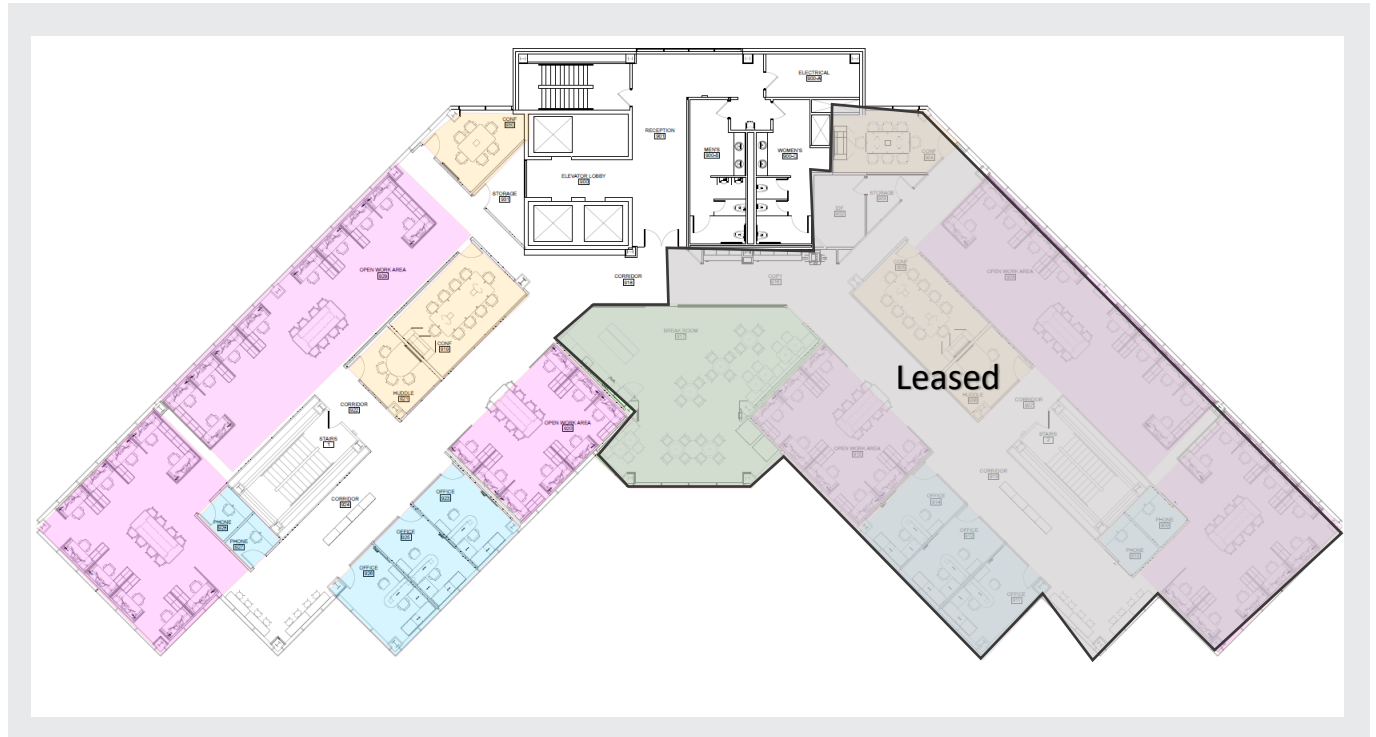


Quality Build-Out

The private conference and huddle rooms are wired with the latest in audio-visual capabilities. Partially furnished space if needed. Everything is new and all desks are motorized up-down.

Wisconsin Trade Center

8401 Greenway Blvd, 9th Floor | Middleton, WI



The Floor Plan

Flexible Space Solutions

Quickly adaptable space to meet the changing needs of individuals and your organization. You can add more private offices if needed.

There are three department or “team zones”, all with open and collaborative meeting areas within each zone. One large conference room and one huddle room along with private small touch-down office perfect for concentrated work or visiting clients who need a quiet space for the day.

Two possible main entrances to the space. Ask Brian Wolff for more information.

3

Private Offices

3

Team Zones

2

Conference Rooms

For Lease

Meet

Training and Conference Rooms

Eat

Large Cafe

Fitness

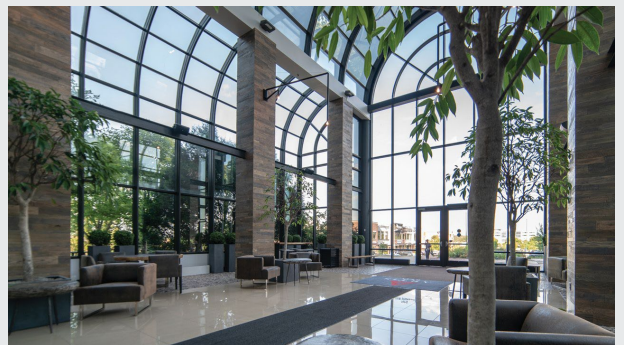
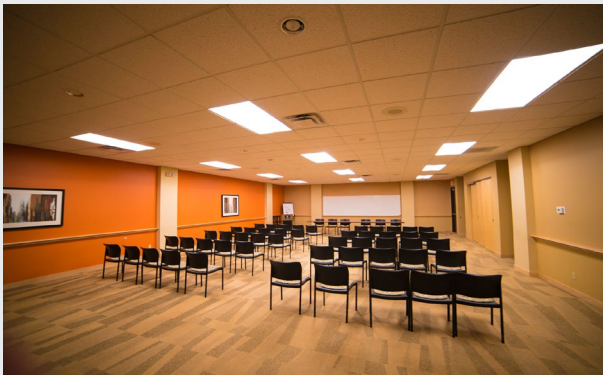
Open Anytime - Lockers - Showers

The Building

The Wisconsin Trade Center is an 11 story and 274,555 sq. ft. Class-A office building. Conveniently located on Madison's far westside next to the Greenway Station lifestyle center.

Amenities

On-site conference center, board rooms, full-service cafe serving breakfast and lunch, large fitness center, locker rooms/showers, secure building with 24/7 card access. Impressive glass atrium, fiber optics, large surface parking lot and skywalk connection to the adjacent Greenway Building



Contact Us

Brian Wolff

Vice President

+1 608 513 9653

Brian.wolff@cbre.com

CBRE Madison

10 E. Doty Street, Ste 410

Madison, WI 53703

+1 608 663 5445

CBRE