



1402 Pankratz Street
Madison, WI 53704

For Sale & Lease
Prime Office Building

Dina Stetler
Real Estate Advisor
+1 608 577 0969
dina.stetler@colliers.com

Colliers | Wisconsin
316 W Washington Ave, Suite 925
Madison WI 53703
+1 608 826 9500

Building Details

35,000+ SF multi-tenant office building - close proximity to downtown Madsion.

Colliers | Wisconsin is pleased to offer 1402 Pankratz Street, a modern multi-tenant office building situated just minutes away from downtown Madison. The building is conveniently located near Madison's East Towne Mall retail corridor, Madison College, and just steps away from the Dane County Regional Airport. The building currently consists of a variety of state and federal tenants. A long-term ground lease with Dane County Regional Airport Expires in 2051 with options to extend for an additional 50 years. 1402 Pankratz Street offers contemporary office space, convenient freeway access and close proximity to a young and well educated workforce.

Property Profile

Address:	1402 Pankratz St, Madison, WI 53704
Built:	2002, remodeled 2006
Building Size:	35,952 SF
Available Space:	475 SF - 4,069 SF
Lot Size:	2.5 Acres (110,638 SF)
Stories:	1 (one)
Parking:	131 Surface Stalls
Zoning	SE - Suburban Employment
Pacel Number	081031103998
2022 Taxes	\$59,321.71
Asking Price:	\$4,725,000
Lease Rate	\$18.00 PSF Gross



Location Overview

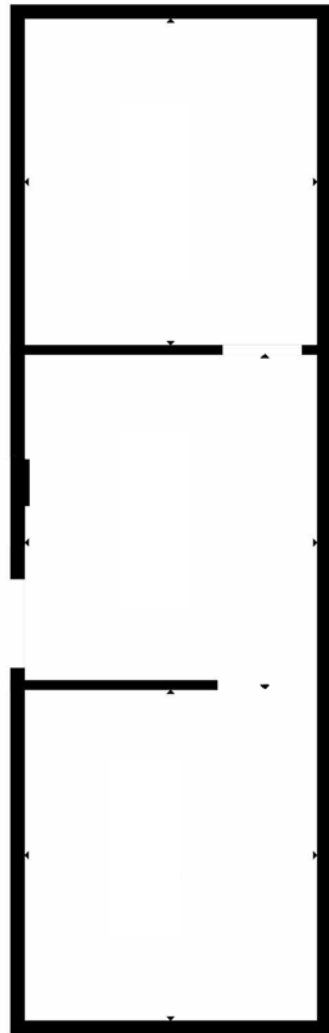


Floor Plans For Lease

Existing Layout

Unit 105

457 USF



Unit 104- 106

2,156 USF

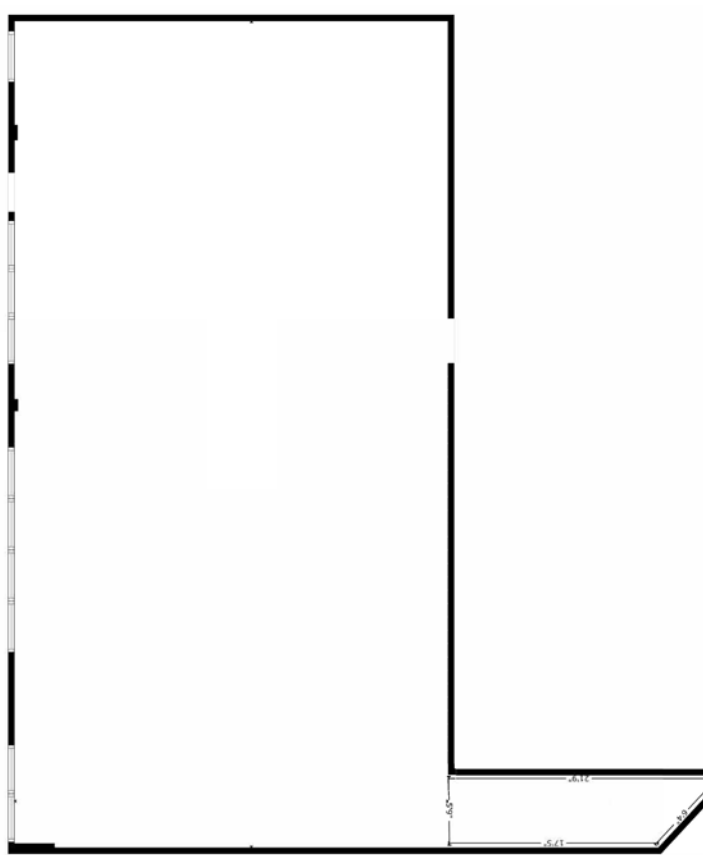


Floor Plans For Lease

Unfinsihed

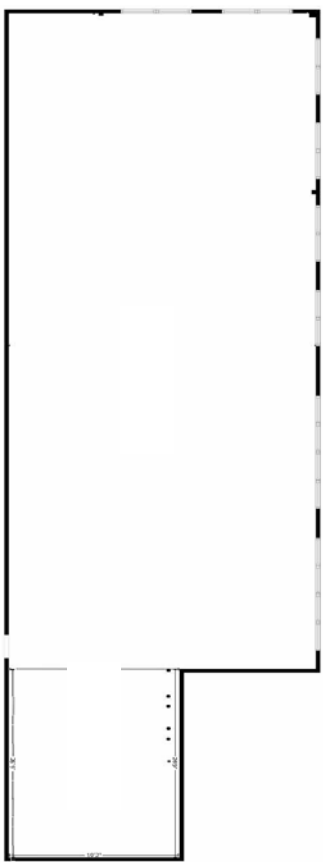
Unfinished A

2,811 USF



Unfinished B

4,069 SF





Madison Workforce

The University of Wisconsin - Madison & Four Strong Technical Schools Help Fuel a Strong Workforce

The well educated workforce, fuelled by nationally ranked UW-Madison, tends to pursue economic stability through careers in business, technology and professional services. The Madison metro area has seen continued steady growth in these sectors thanks to notable names like Epic Systems, SSM Healthcare and American Family Insurance. The combination of the strong education system and stable nationally recognized corporations encourages the young workforce to stay in the Madison area, a trend that will likely draw additional employers and lead to further growth.

Notable Area Employers



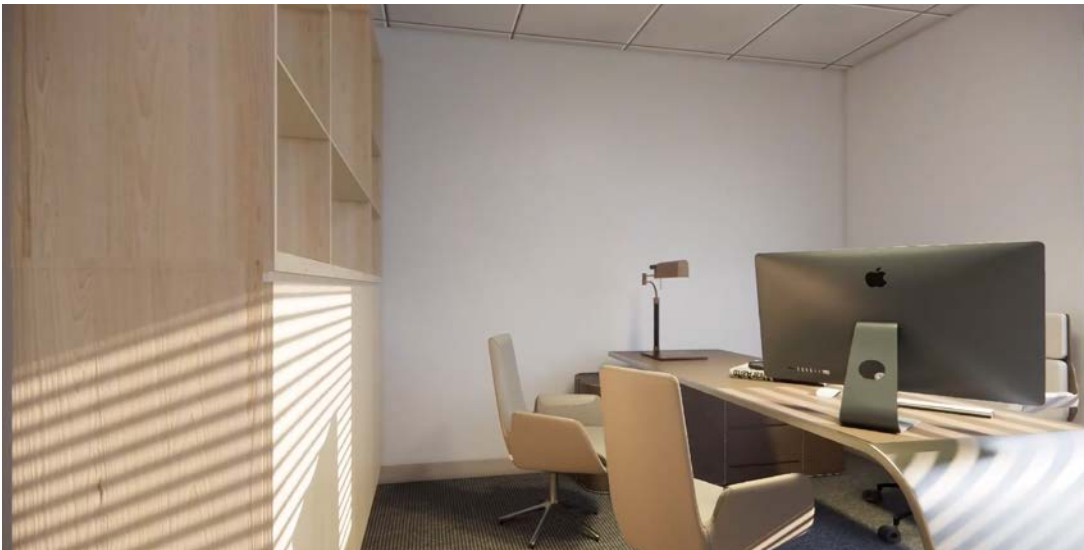
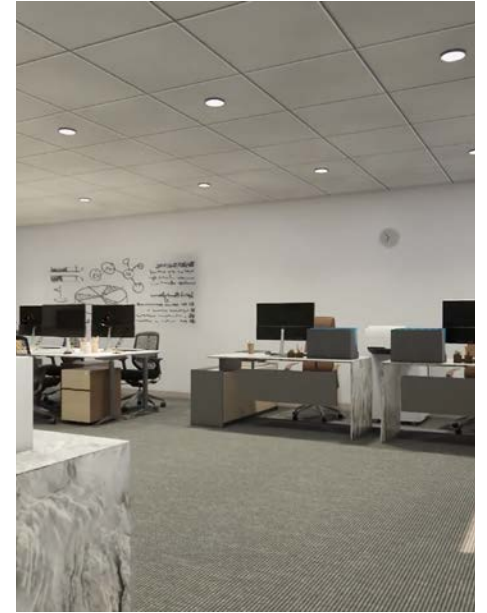
Building Photos

Building exterior, interior and surrounding views



Conceptual Renderings

conceptual renderings for unfinished suite build-outs



1402
Pankratz Street

Madison, WI 53704

CONTACT US

Dina Stetler
Real Estate Advisor
+1 608 577 0969
dina.stetler@colliers.com

Colliers | Wisconsin
316 W Washington Ave, Suite 925
Madison WI 53703
+1 608 826 9500



This document/email has been prepared by Colliers for advertising and general information only. Colliers makes no guarantees, representations or warranties of any kind, expressed or implied, regarding the information including, but not limited to, warranties of content, accuracy and reliability. Any interested party should undertake their own inquiries as to the accuracy of the information. Colliers excludes unequivocally all inferred or implied terms, conditions and warranties arising out of this document and excludes all liability for loss and damages arising there from. This publication is the copyrighted property of Colliers and /or its licensor(s). © 2023. All rights reserved. This communication is not intended to cause or induce breach of an existing listing agreement.

Non-Residential Customers

Wisconsin law requires all real estate licensees to give the following information about brokerage services to prospective customers.

Prior to negotiating on your behalf the Brokerage firm, or an agent associated with the firm, must provide you the following disclosure statement:

Broker Disclosure to Customers

You are a customer of the broker. The broker is either an agent of another party in the transaction or a subagent of another broker who is the agent of another party in the transaction. The broker, or a salesperson acting on behalf of the broker, may provide brokerage services to you, the broker owes you, the customer, the following duties:

- The duty to provide brokerage services to you fairly and honestly.
- The duty to exercise reasonable skill and care in providing brokerage services to you.
- The duty to provide you with accurate information about market conditions with a reasonable time if you request it, unless prohibited by law.
- The duty to protect your confidentiality. Unless the law requires it, the broker will not disclose your confidential information or the confidential information to other parties.
- The duty to safeguard trust funds and other property the broker holds.
- The duty, when negotiating, to present contract proposals in an objective and unbiased manner and disclose the advantages and disadvantages of the proposals.

Please review this information carefully. A broker or salesperson can answer your questions about brokerage services, but if you need legal advice, tax advice or a professional home inspection contact an attorney, tax advisor, or home inspector. This disclosure is required by section 452.135 of the Wisconsin statutes and is for information only. It is a plain-language summary of a broker's duties to a customer under section 452.133 (1) of the Wisconsin statutes.

Confidentiality Notice to Customers

Broker will keep confidential any information given to broker in confidence, or any information obtained by broker that he or she knows a reasonable person would want to be kept confidential. Unless the information must be disclosed by law or you authorize the broker to disclose particular information. A broker shall continue to keep the information confidential after broker is no longer providing brokerage services to you.

The following information is required to be disclosed by law:

1. Material adverse facts, as defined in section 452.01 (5g) of the Wisconsin Statutes.
 2. Any facts known by the broker that contradict any information included in a written inspection report on the property or real estate that is the subject of the transaction.
- To ensure that the broker is aware of what specific information you consider confidential, you may list that information below. At a later time, you may also provide the broker with other information you consider to be confidential.

Confidential information: _____

Non-Confidential information: (The following information may be disclosed by Broker): _____

(Insert information you authorize the broker to disclose such as financial qualification information.)

Consent to Telephone Solicitation

I/We agree that the broker and any affiliated settlement service providers (for example, a mortgage company or title company) may call our/my home or cell phone numbers regarding issues, goods and services related to the real estate transaction until I/we withdraw this consent in writing.

List Home/Cell Numbers: _____

Sex Offender Registry

Notice: You may obtain information about the sex offender registry and persons registered with the registry by contacting the Wisconsin Department of Corrections on the Internet at <http://offender.doc.state.wi.us/public/>

Definition of Material Adverse Facts

A "material adverse fact" is defined in Wis. Stat 452.01 (5g) as an adverse fact that a party indicates is of such significance, or that is generally recognized by a competent licensee as being of such significance to a reasonable party, that it affects or would affect the party's decision to enter into a contract or agreement concerning a transaction or affects or would affect the party's decision to enter into a contract or agreement concerning a transaction or affects or would affect the party's decision about the terms of such a contract or agreement. An "adverse" fact is defined in Wis. Stat. 452.01 (1e) as a condition or occurrence that a competent licensee generally recognizes will significantly and adversely affect the value of the property, significantly reduce the structural integrity of improvements to real estate, or present a significant health risk to occupants of the property; or information that indicates that a party to a transaction is not able to or does not intend to meet his or her obligations under a contract or agreement made concerning the transaction.