

**For Lease &
For Sale**

cresa



521 East Washington Avenue

Madison, WI 53703

Property Snapshot

Size	5,013 SF - 2 story <ul style="list-style-type: none">• 3,345 SF 1st floor• 1,668 SF 2nd floor
Parcel Size	10,555 SF
Year Built	1982
Parking	15 Stalls
For Sale:	
Asking Price	\$1,500,000
For Lease:	
Rent	\$25/SF NNN
Term	1 year



Property Profile

- Excellent condition/visibility
- Fully gutted/remolded in 2020
- Walkable area of downtown Madison
- Hard corner with future redevelopment potential

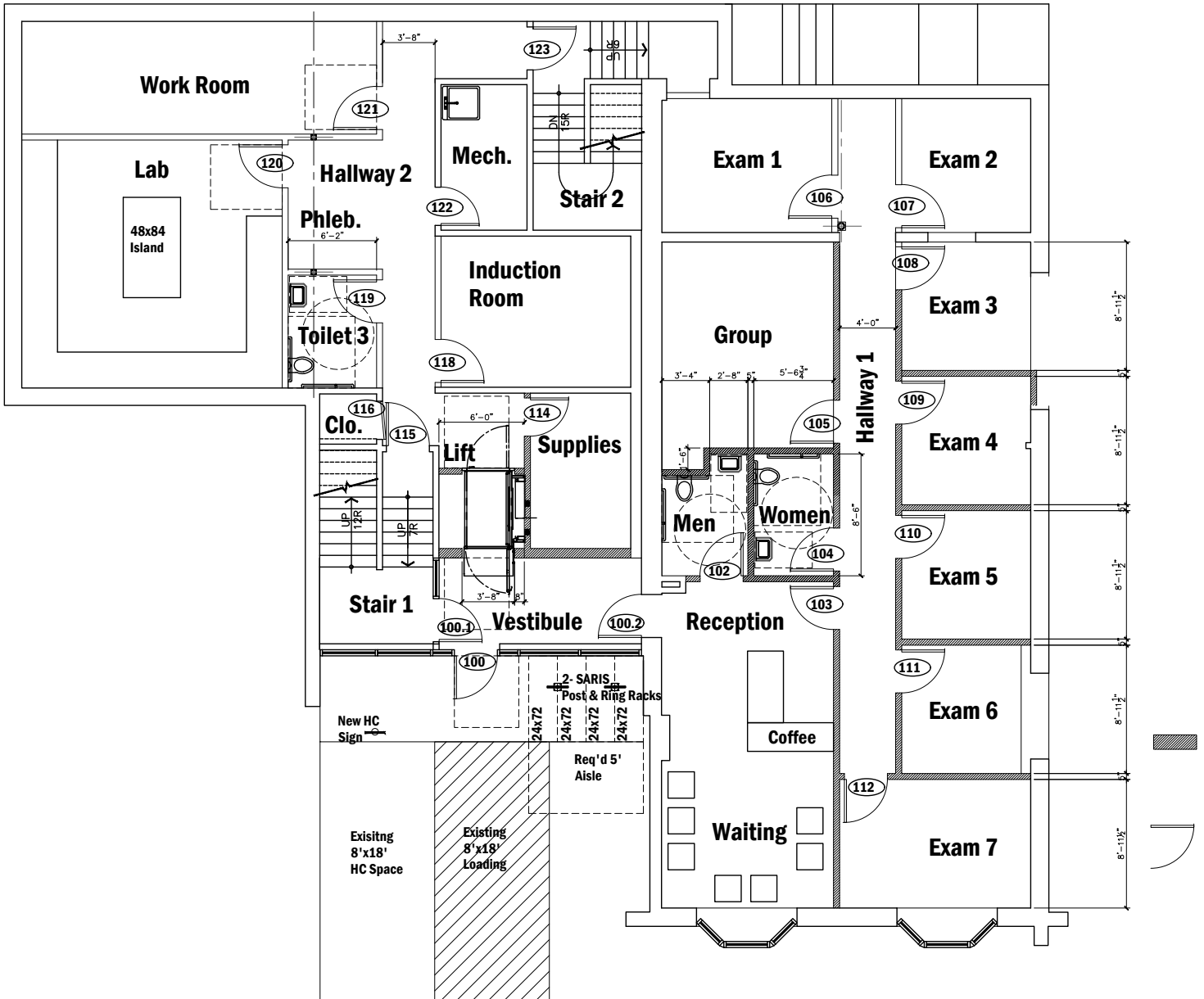
For More Information:



TJ Blitz
608.444.9440
tblitz@cresa.com

Cresa Madison
613 Williamson Street, 210
Madison WI 53703

First Floor- Floor plan



Second Floor - Floor plan

