

# FOR LEASE

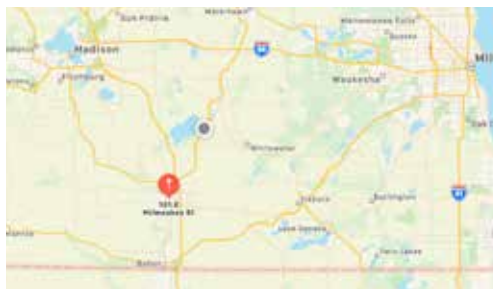
## PROSPECT 101

233 S/F - 18,760 S/F OFFICE SPACE AVAILABLE

101 E. Milwaukee St. Janesville, WI 53545



LANDMARKS	MILES
Rockford	35 Miles
I-90/39	3 Miles
State Capital/Downtown	44 Miles
Milwaukee	76 Miles
Chicago/O'Hare	94 Miles



### PROPERTY PROFILE

<b>Base Rent</b>	\$16.00 - \$18.00/SF, FSG	<b>1st Floor</b>	Suite 128	1,091 s/f	Immediate
<b>Date Available</b>	Available now	<b>2nd Floor</b>	Suite 201 & 215	3,319 s/f	Immediate
<b>Other Expenses</b>	In-suite janitorial	<b>3rd Floor</b>	Suite 306 & 324	1,207 s/f	Immediate
<b>Parking</b>	Covered parking adjacent to building	<b>4th Floor</b>	Suites 405, 409, 410, 411 & 4133	3,367 s/f	Immediate
<b>Required Term</b>	1 year minimum	<b>5th Floor</b>	Suite 507	1,372 s/f	Immediate
<b>TI Allowance</b>	Negotiable	<b>6th Floor</b>	Suite 600	8,404 s/f	Immediate
<b>Building Signage</b>	Available/Negotiable	<b>Total S/F</b>	18,760 s/f		



Jeff Hoeye  
Managing Partner | Broker  
m: 920.728.1111 p: 608.416.5664  
jhoeye@artisangraham.com

106 E. Doty St.  
Suite 320  
Madison, WI 53703  
www.artisangraham.com

# FOR LEASE

**Suite 128 | 1,091 S/F**

**OFFICE SPACE AVAILABLE**

**101 E. Milwaukee St. Janesville, WI 53545**

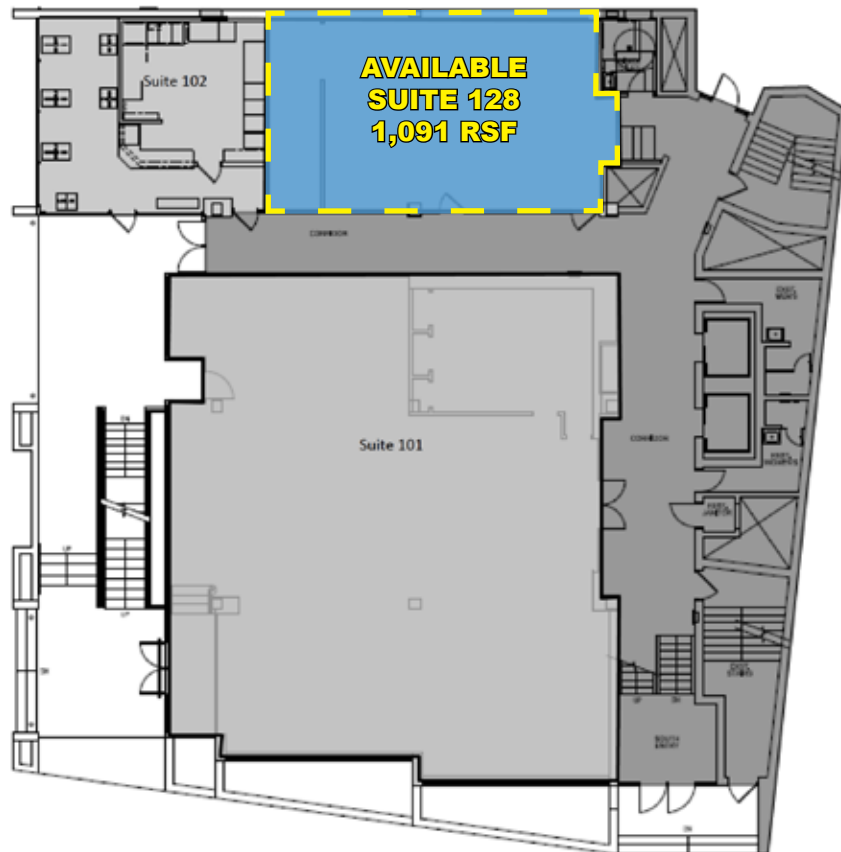


**Floor to ceiling glass storefront**



**Adjacent to Drafthouse**

## 1st Floor



# FOR LEASE

**3,319 S/F Available**

## OFFICE SPACE AVAILABLE

101 E. Milwaukee St. Janesville, WI 53545

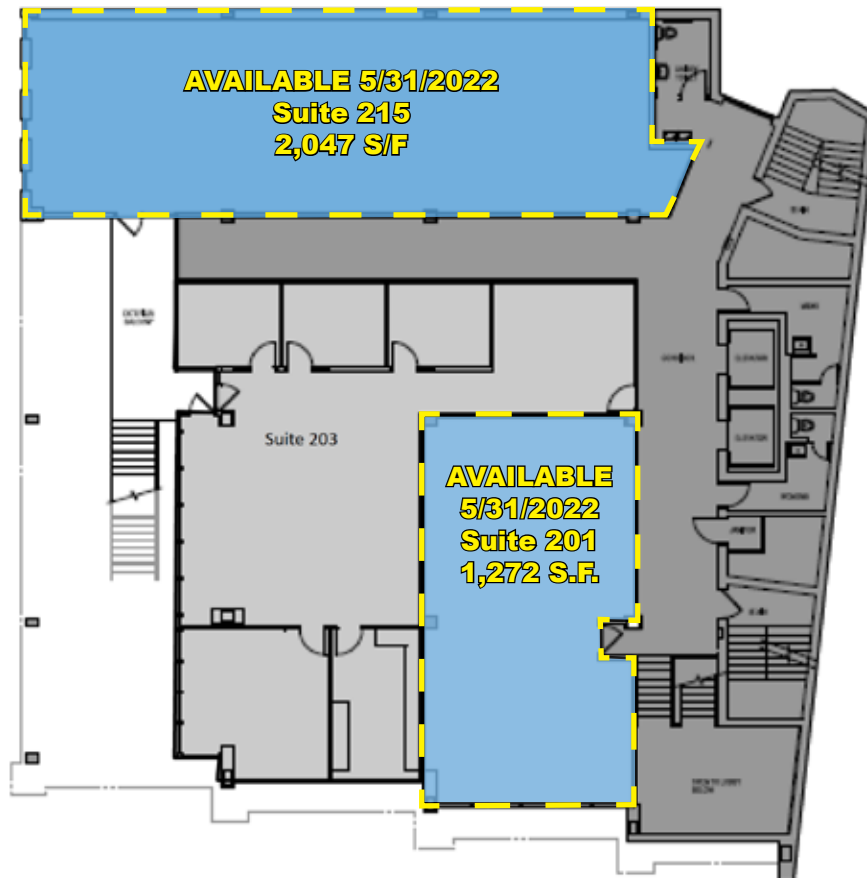


**Open floorplan with office**



**Kitchenette**

### 2nd Floor





# FOR LEASE

**2,591 S/F Available**

**OFFICE SPACE AVAILABLE**

**101 E. Milwaukee St. Janesville, WI 53545**

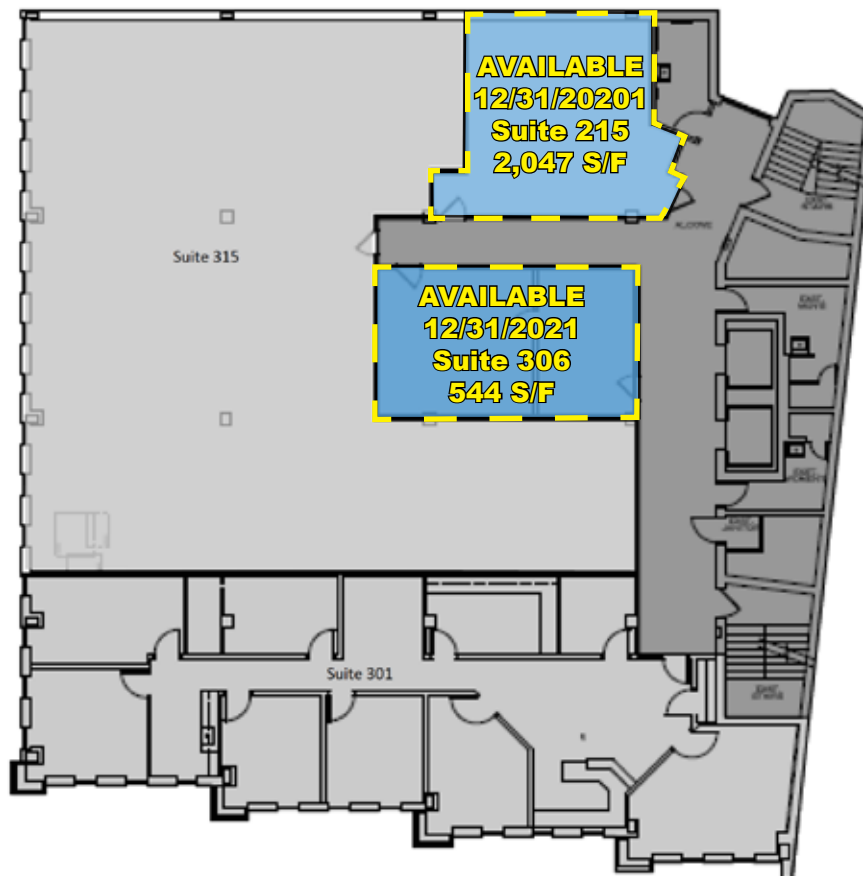


**Quality common elements**



**Open floor plan**

## 3rd Floor



# FOR LEASE

**2,783 S/F Available**

## OFFICE SPACE AVAILABLE

101 E. Milwaukee St. Janesville, WI 53545



**Shared conference room**



**River views**

### 4th Floor



**AVAILABLE 5/31/2021**  
**Suite 409 - 248 S/F**  
**Suite 410 - 233 S/F**  
**Suite 411 - 332 S/F**

# FOR LEASE

**1,372 S/F**

**OFFICE SPACE AVAILABLE**

**101 E. Milwaukee St. Janesville, WI 53545**



## 5th Floor





# FOR LEASE

**8,404 S/F**

## OFFICE SPACE AVAILABLE

101 E. Milwaukee St. Janesville, WI 53545

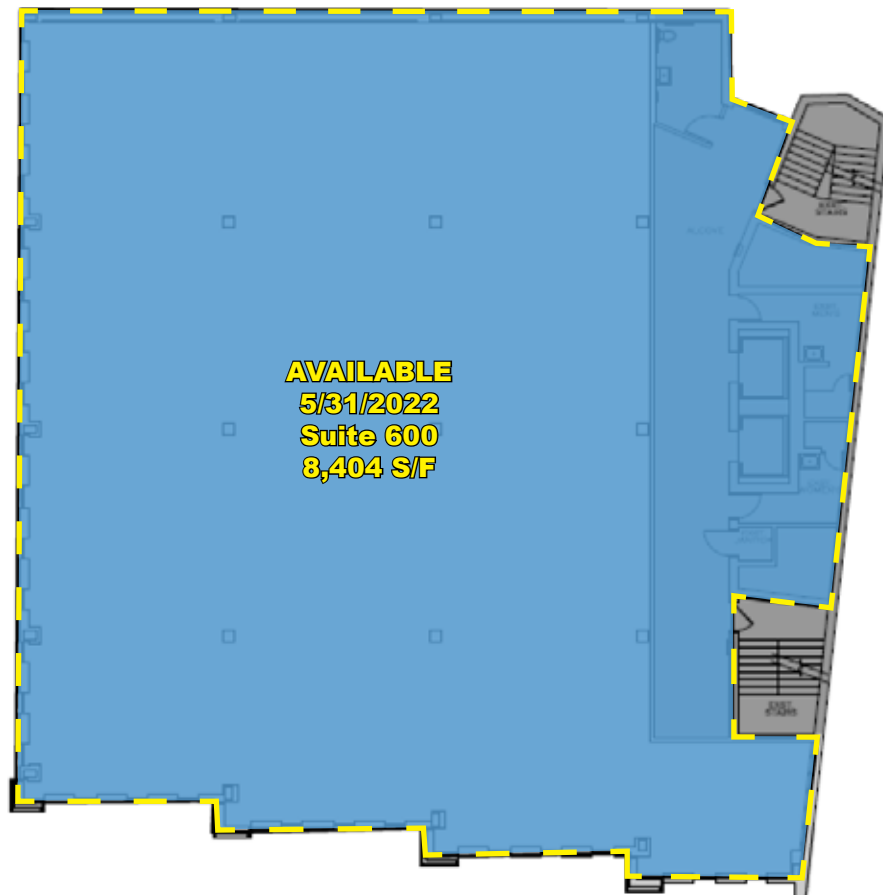


**Open floorplan with executive offices**



**Private conference room**

### 6th Floor



# FOR LEASE

**18,760 S/F**

## OFFICE SPACE AVAILABLE

**101 E. Milwaukee St. Janesville, WI 53545**

### Rock County Submarket Summary

The vacancy rate has risen significantly over the past 12 months, but at 3.6%, the rate was substantially below the 10-year average as of 2021Q2.

Annual net absorption came in at a decrease of 54,000 SF over the past year. The story improves over a longer timeframe: Over the past five years, the submarket has posted net absorption of about 36,000 SF per year, on average. Rents fell by 2.1% over the past year. Things do look somewhat better longer timescale, however, as rents have managed an average annual gain of 1.1% per year over the past 10 years.

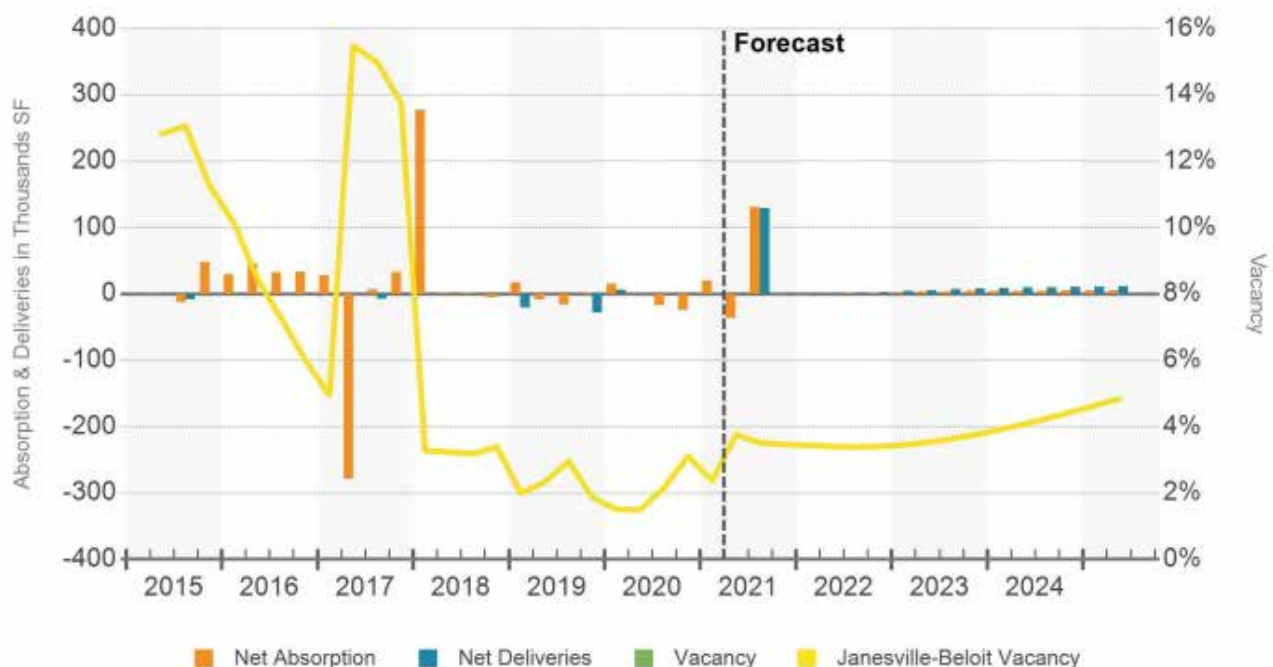
The 130,000 SF currently underway in Rock County represents a significant expansion to the

inventory. While this is not the only construction the submarket has seen in recent memory, it does represent a turnabout from the overall trend. Specifically, the inventory has contracted over the past 10 years, as demolition activity has outpaced new construction.

This has been a somewhat active submarket for office transactions in recent years, and the number of properties sold in the past year has surpassed the threeyear average. The coronavirus remains a major disrupter to the economy at large and creates profound uncertainty in many markets. The effects of the pandemic could already be impacting the submarket's key metrics which indicates a strong and potentially fast recovery for the submarket.



#### NET ABSORPTION, NET DELIVERIES & VACANCY



Jeff Hoeye  
Managing Partner | Broker  
m: 920.728.1111 p: 608.416.5664  
jhoeye@artisangraham.com

106 E. Doty St.  
Suite 320  
Madison, WI 53703  
www.artisangraham.com



# STATE OF WISCONSIN BROKER DISCLOSURE TO NON-RESIDENTIAL CUSTOMERS

**Wisconsin law requires all real estate licensees to give the following information about brokerage services to prospective customers.**

Prior to negotiating on your behalf the brokerage firm, or an agent associated with the firm, must provide you the following disclosure statement.

## **BROKER DISCLOSURE TO CUSTOMERS**

You are the customer of the brokerage firm (hereinafter Firm). The Firm is either an agent of another party in the transaction or a subagent of another firm that is the agent of another party in the transaction. A broker or a salesperson acting on behalf of the Firm, may provide brokerage services to you. Whenever the Firm is providing brokerage services to you, the Firm and its brokers and salespersons (hereinafter Agents) owe you, the customer, the following duties:

- The duty to provide brokerage services to you fairly and honestly.
- The duty to exercise reasonable skill and care in providing brokerage services to you.
- The duty to provide you with accurate information about market conditions within a reasonable time if you request it, unless disclosure of the information is prohibited by law.
- The duty to disclose to you in writing certain Material Adverse Facts about a property, unless disclosure of the information is prohibited by law (see “Definition of Material Adverse Facts” below).
- The duty to protect your confidentiality. Unless the law requires it, the Firm and its Agents will not disclose your confidential information or the confidential information of other parties (see “Confidentiality Notice To Customers” below).
- The duty to safeguard trust funds and other property held by the Firm or its Agents.
- The duty, when negotiating, to present contract proposals in an objective and unbiased manner and disclose the advantages and disadvantages of the proposals.

Please review this information carefully. An agent of the Firm can answer your questions about brokerage services, but if you need legal advice, tax advice, or a professional property inspection, contact an attorney, tax advisor, or property inspector.

This disclosure is required by section 452.135 of the Wisconsin statutes and is for information only. It is a plain-language summary of a broker’s duties to a customer under section 452.133 (1) of the Wisconsin statutes.

## **CONFIDENTIALITY NOTICE TO CUSTOMERS**

The Firm and its Agents will keep confidential any information given to the Firm or its Agents in confidence, or any information obtained by the Firm or its Agents that a reasonable person would want to be kept confidential, unless the information must be disclosed by law or you authorize the Firm to disclose particular information. The Firm and its Agents shall continue to keep the information confidential after the Firm is no longer providing brokerage services to you.

The following information is required to be disclosed by law:

1. Material Adverse Facts, as defined in section 452.01 (5g) of the Wisconsin statutes (see “definition of material adverse facts” below).
2. Any facts known by the Firm or its Agents that contradict any information included in a written inspection report on the property or real estate that is the subject of the transaction.

To ensure that the Firm and its Agents is aware of what specific information you consider confidential, you may list that information below or provide that information to the Firm or its Agents by other means. At a later time, you may also provide the Firm or its Agents with other information that you consider to be confidential.

CONFIDENTIAL INFORMATION: \_\_\_\_\_

NON-CONFIDENTIAL INFORMATION (The following information may be disclosed by the Firm and its Agents): \_\_\_\_\_

\_\_\_\_\_  
(INSERT INFORMATION YOU AUTHORIZE TO BE DISCLOSED SUCH AS FINANCIAL QUALIFICATION INFORMATION)

## **SEX OFFENDER REGISTRY**

Notice: You may obtain information about the sex offender registry and persons registered with the registry by contacting the Wisconsin Department of Corrections on the Internet at <http://www.doc.wi.gov/> or by phone at 608-240-5830.

## **DEFINITION OF MATERIAL ADVERSE FACTS**

A “Material Adverse Fact” is defined in Wis. Stat. 452.01 (5g) as an adverse fact that a party indicates is of such significance, or that is generally recognized by a competent licensee as being of such significance to a reasonable party, that it affects or would affect the party’s decision to enter into a contract or agreement concerning a transaction or affects or would affect the party’s decision about the terms of such a contract or agreement.

An “Adverse Fact” is defined in Wis. Stat. 452.01 (1e) as a condition or occurrence that a competent licensee generally recognizes will significantly and adversely affect the value of the property, significantly reduce the structural integrity of improvements to real estate, or present a significant health risk to occupants of the property; or information that indicates that a party to a transaction is not able to or does not intend to meet his or her obligations under a contract or agreement made concerning the transaction.

No representation is made as to the legal validity of any provision or the adequacy of any provision on any specific transaction.



Jeff Hoeye  
Managing Partner | Broker  
m: 920.728.1111 p: 608.416.5664  
[jhoeye@artisangraham.com](mailto:jhoeye@artisangraham.com)

106 E. Doty St.  
Suite 320  
Madison, WI 53703  
[www.artisangraham.com](http://www.artisangraham.com)