

FOR LEASE

3351 Dairy Dr.
Madison, WI 53716

INDUSTRIAL/FLEX - AVAILABLE MAY 2024

TOTAL SQUARE FOOTAGE - 25,700
NNN Lease - \$12.00 s/f



artisangraham.com

Jeff Hoeye
Broker | Managing Partner
m: 920.728.1111 p: 608.416.5664
jhoeye@artisangraham.com

106 E. Doty St.
Suite 320
Madison, WI 53703

AERIAL SITE PHOTOS

3351 Dairy Dr.
Madison, WI 53716



PROPERTY HIGHLIGHTS

Property Type	Industrial/Flex
Sq/ft Available	25,700(5,000 s/f office w/ 20,700 warehouse)
Availability	May 2024
Lot Size	2.25 Acres
Price per s/f	\$12.00
Lease Type	NNN
Zoning	IL - Industrial Limited
Utilities	Present at Street

DEMOGRAPHICS

	1 Mile	3 Miles	5 Miles
Population	793	42,368	116,905
Households	342	17,999	52,764
HH Growth (2022-2027)	+4.37%	+4.84%	+4.76%
HH Income (Median)	\$79,018	\$83,895	\$71,200

artisangraham.com

Jeff Hoeye
Broker | Managing Partner
m: 920.728.1111 p: 608.416.5664
jhoeye@artisangraham.com

106 E. Doty St.
Suite 320
Madison, WI 53703

FOR LEASE

**ARTISAN
GRAHAM**
Real Estate

3351 Dairy Dr.
Madison, WI 53716

AERIAL SITE PHOTOS



artisangraham.com

Jeff Hoeye
Broker | Managing Partner
m: 920.728.1111 p: 608.416.5664
jhoeye@artisangraham.com

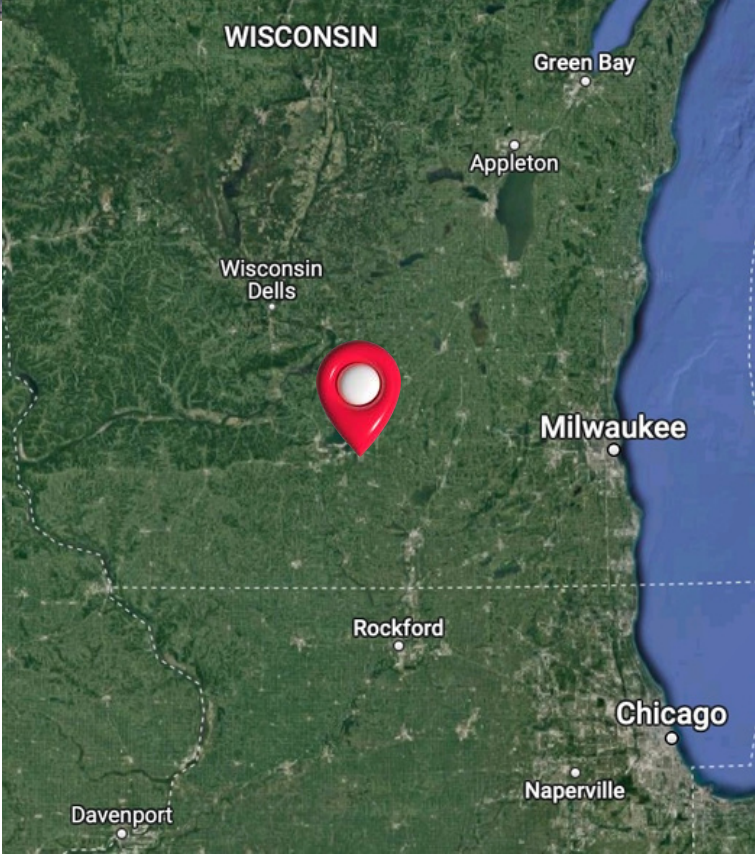
106 E. Doty St.
Suite 320
Madison, WI 53703

FOR LEASE



LOCATION INFORMATION

Major Cities	Distance
Madison(Capitol building)	7 miles
Rockford, IL	55 miles
Wisconsin Dells, WI	57 miles
Milwaukee, WI	78 miles
Appleton, WI	115 miles
Chicago, IL	142 miles
Green Bay, WI	147 miles



artisangraham.com

Jeff Hoeye
 Broker | Managing Partner
 m: 920.728.1111 p: 608.416.5664
 jhoeye@artisangraham.com

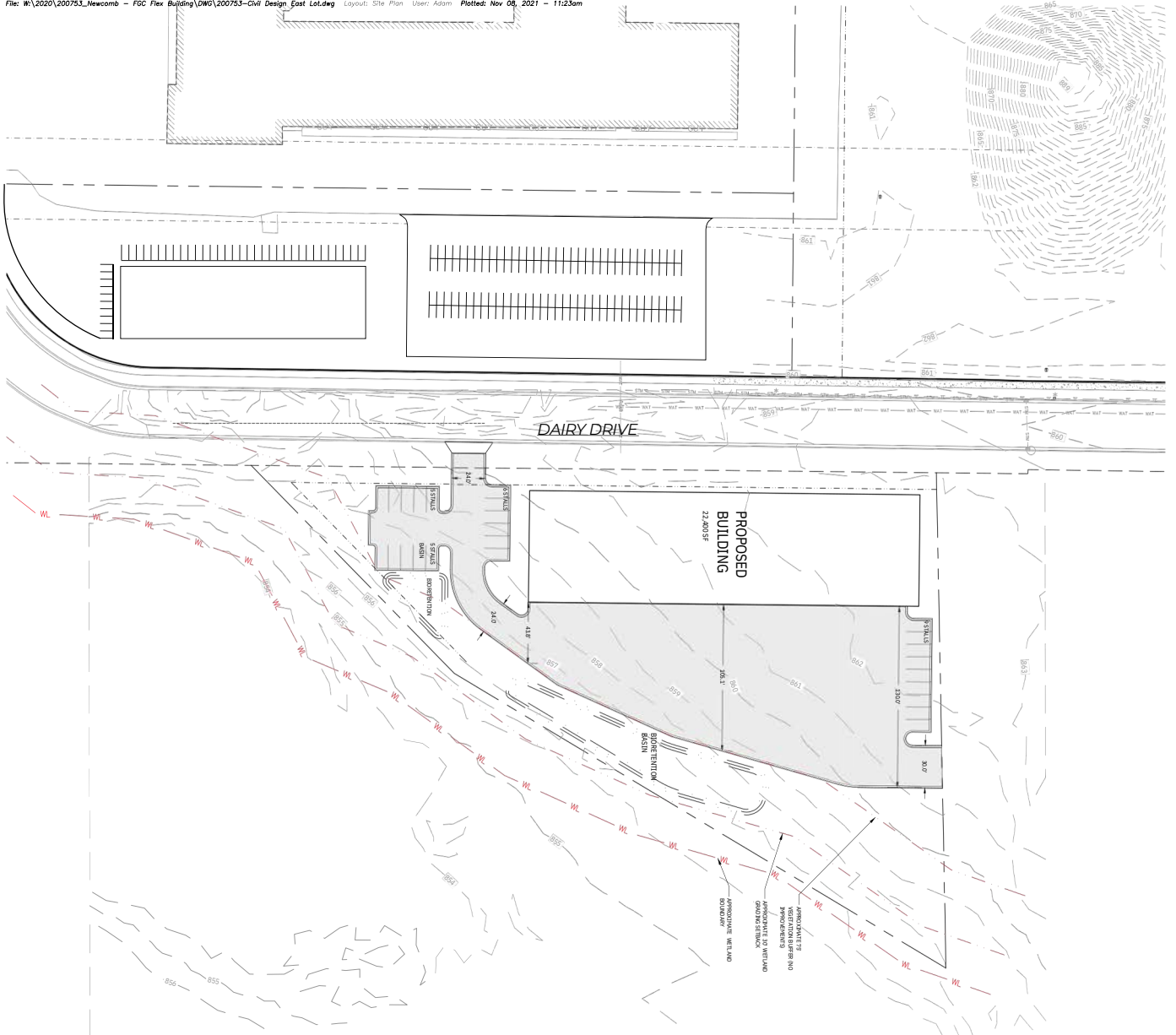
106 E. Doty St.
 Suite 320
 Madison, WI 53703

FOR LEASE

SITE PLANS

3351 Dairy Dr.
Madison, WI 53716

File: W:\2020\200753_Newcomb - FGC Flex Building\DWG\200753-Civil Design East Lot.dwg Layout: Site Plan User: Adam Plotted: Nov 08, 2021 - 11:23am



LEGEND (PROPOSED)

- PROPOSED IMPROVEMENT OUTLINE
- EXISTING
- EXISTING CONCRETE
- 1/4" CURB AND GUTTER
- APPROXIMATE FINISH
- OPERATIONAL REQUIREMENT FACILITY

GENERAL NOTES

1. ALL NOTES TO BE READ IN CONJUNCTION WITH THE CITY OF MADISON STANDARD SPECIFICATIONS FOR CONSTRUCTION OF PUBLIC WORKS, LATEST EDITION, AND THE CITY OF MADISON STANDARD SPECIFICATIONS FOR CONSTRUCTION OF PUBLIC WORKS, LATEST EDITION, AND THE CITY OF MADISON STANDARD SPECIFICATIONS FOR CONSTRUCTION OF PUBLIC WORKS, LATEST EDITION.
2. CONTRACTOR TO OBTAIN NECESSARY PERMITS FROM THE CITY OF MADISON.
3. ALL UTILITIES SHOWN ARE BASED ON RECORD DRAWINGS AND FIELD SURVEY. CONTRACTOR TO VERIFY ALL UTILITIES PRIOR TO CONSTRUCTION.
4. ALL UTILITIES SHOWN ARE BASED ON RECORD DRAWINGS AND FIELD SURVEY. CONTRACTOR TO VERIFY ALL UTILITIES PRIOR TO CONSTRUCTION.
5. ALL UTILITIES SHOWN ARE BASED ON RECORD DRAWINGS AND FIELD SURVEY. CONTRACTOR TO VERIFY ALL UTILITIES PRIOR TO CONSTRUCTION.

<p>DAIRY DRIVE FLEX BUILDING</p> <p>CITY OF MADISON, DANE COUNTY, WI</p> <p>Sheet Title:</p> <p>SITE PLAN</p>		<p>3351 DAIRY DRIVE</p> <p>MADISON, WI 53716</p>						
<p>Revisions:</p> <table border="1"> <thead> <tr> <th>No.</th> <th>Date</th> <th>Description</th> </tr> </thead> <tbody> <tr> <td> </td> <td> </td> <td> </td> </tr> </tbody> </table>	No.	Date	Description				<p>Graphic Scale: 0" = 10' 20' 40' 60'</p> <p>Myer Number: 20-0753</p> <p>Set Type: SCHEMATIC</p> <p>Date Issued: 11/08/2021</p> <p>Sheet Number: C100</p>	<p>WYSER ENGINEERING</p> <p>NORTH</p>
No.	Date	Description						

DIGESTERS HOTLINE
Toll Free (800) 242-8511 or 811
Faxing (608) 242-2288
www.DiggerHotline.com

FOR LEASE

EXTERIOR PERSPECTIVES

3351 Dairy Dr.
Madison, WI 53716



Sketchworks
architecture

3351 DAIRY DR
NEW CONSTRUCTION
3351 DAIRY DR
MADISON, WI

Project Status

PROJ. # 22291-01
© SKETCHWORKS ARCHITECTURE 2022

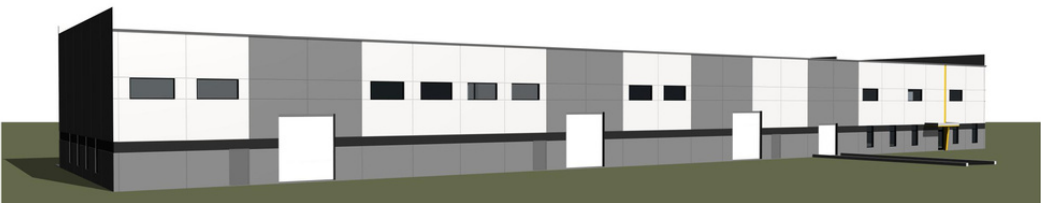
EXTERIOR ELEVATIONS

A202

PRELIMINARY

3351 DAIRY DR
EXTERIOR PERSPECTIVES
12/05/22

© SKETCHWORKS ARCHITECTURE, LLC 2022
2501 PARMENTER STREET, SUITE 100B | MIDDLETON, WI 53562 | 608-836-7570



artisangraham.com

Jeff Hoeye
Broker | Managing Partner
m: 920.728.1111 p: 608.416.5664
jhoeye@artisangraham.com

106 E. Doty St.
Suite 320
Madison, WI 53703

STATE OF WISCONSIN BROKER DISCLOSURE TO NON-RESIDENTIAL CUSTOMERS

Wisconsin law requires all real estate licensees to give the following information about brokerage services to prospective customers.

Prior to negotiating on your behalf the brokerage firm, or an agent associated with the firm, must provide you the following disclosure statement.

BROKER DISCLOSURE TO CUSTOMERS

You are the customer of the brokerage firm (hereinafter Firm). The Firm is either an agent of another party in the transaction or a subagent of another firm that is the agent of another party in the transaction.

A broker or a salesperson acting on behalf of the Firm, may provide brokerage services to you. Whenever the Firm is providing brokerage services to you, the Firm and its brokers and salespersons (hereinafter Agents) owe you, the customer, the following duties:

- The duty to provide brokerage services to you fairly and honestly.
- The duty to exercise reasonable skill and care in providing brokerage services to you.
- The duty to provide you with accurate information about market conditions within a reasonable time if you request it, unless disclosure of the information is prohibited by law.
- The duty to disclose to you in writing certain Material Adverse Facts about a property, unless disclosure of the information is prohibited by law (see "Definition of Material Adverse Facts" below).
- The duty to protect your confidentiality. Unless the law requires it, the Firm and its Agents will not disclose your confidential information or the confidential information of other parties (see "Confidentiality Notice To Customers" below).
- The duty to safeguard trust funds and other property held by the Firm or its Agents.
- The duty, when negotiating, to present contract proposals in an objective and unbiased manner and disclose the advantages and disadvantages of the proposals.

Please review this information carefully. An agent of the Firm can answer your questions about brokerage services, but if you need legal advice, tax advice, or a professional property inspection, contact an attorney, tax advisor, or property inspector.

This disclosure is required by section 452.135 of the Wisconsin statutes and is for information only. It is a plain-language summary of a broker's duties to a customer under section 452.133 (1) of the Wisconsin statutes.

CONFIDENTIALITY NOTICE TO CUSTOMERS

The Firm and its Agents will keep confidential any information given to the Firm or its Agents in confidence, or any information obtained by the Firm or its Agents that a reasonable person would want to be kept confidential, unless the information must be disclosed by law or you authorize the Firm to disclose particular information. The Firm and its Agents shall continue to keep the information confidential after the Firm is no longer providing brokerage services to you.

The following information is required to be disclosed by law:

1. Material Adverse Facts, as defined in section 452.01 (5g) of the Wisconsin statutes (see "definition of material adverse facts" below).
2. Any facts known by the Firm or its Agents that contradict any information included in a written inspection report on the property or real estate that is the subject of the transaction.

To ensure that the Firm and its Agents are aware of what specific information you consider confidential, you may list that information below or provide that information to the Firm or its Agents by other means. At a later time, you may also provide the Firm or its Agents with other information that you consider to be confidential.

CONFIDENTIAL INFORMATION:

NON-CONFIDENTIAL INFORMATION (The following information may be disclosed by the Firm and its Agents):

(INSERT INFORMATION YOU AUTHORIZE TO BE DISCLOSED SUCH AS FINANCIAL QUALIFICATION INFORMATION)

SEX OFFENDER REGISTRY

Notice: You may obtain information about the sex offender registry and persons registered with the registry by contacting the Wisconsin Department of Corrections on the Internet at <http://www.doc.wi.gov/> or by phone at 608-240-5830.

DEFINITION OF MATERIAL ADVERSE FACTS

A "Material Adverse Fact" is defined in Wis. Stat. 452.01 (5g) as an adverse fact that a party indicates is of such significance, or that is generally recognized by a competent licensee as being of such significance to a reasonable party, that it affects or would affect the party's decision to enter into a contract or agreement concerning a transaction or affects or would affect the party's decision about the terms of such a contract or agreement.

An "Adverse Fact" is defined in Wis. Stat. 452.01 (1e) as a condition or occurrence that a competent licensee generally recognizes will significantly and adversely affect the value of the property, significantly reduce the structural integrity of improvements to real estate, or present a significant health risk to occupants of the property; or information that indicates that a party to a transaction is not able to or does not intend to meet his or her obligations under a contract or agreement made concerning the transaction.

No representation is made as to the legal validity of any provision or the adequacy of any provision on any specific transaction.