



Old Sauk Trails Park

1232 Fourier Drive, Madison, WI

PROPERTY

1232 Fourier Drive is a 30,005-square foot EPA Energy Star certified building located on the west side of Madison in the Old Sauk Trails Office Park. This property features thoughtful landscaping and a natural light filled two-story atrium lobby.

LOCATION

Conveniently situated near the West Beltline Highway, the building offers easy accessibility for both employees and clients. Nestled in a beautiful natural setting, it is located just off Old Sauk Trail.

AMENITIES

Our portfolio offers a range of amenities and services including a two-story atrium, fiber optics, security card access, a break room, a large surface parking lot, and access to all conference rooms, board rooms, and no-fee fitness centers. Artis REIT prides itself on delivering first-class property management, providing on-site maintenance and 24/7 emergency maintenance services.



Artis REIT Madison Office
8215 Greenway Blvd, Suite 220
Middleton, WI 53562
P.O. Box 7700
Madison, WI 53707
madison.artisreit.com

Kyle Robb, CCIM
Leasing Manager

608.830.6308
krobb@artisreit.com

Leon R. Wilkosz, CCIM, RPA®
Senior Vice-President
Asset Management - Madison
608.830.6302
lwilkosz@artisreit.com



Building Overview

1232 Fourier Drive, Madison, WI

BUILDING DESCRIPTION	1232 Fourier Drive is a one-story, 30,005 square foot Class-B building located on the westside of Madison in the Old Sauk Trails office park. This property features plenty of free surface parking and a brilliant two-story atrium lobby.
BUILDING HOURS	7:30 a.m. - 6:00 p.m. M - F
SIGNAGE	Monument & building signage available
STORIES	1
PARKING	3.33/1000 100 Stalls
HVAC SYSTEM	Rooftop cool/heat
SECURITY FEATURES	Key card access
TELEPHONE/CABLE/INTERNET PROVIDERS	TDS Metrocom/Charter Communications/SupraNet



Artis REIT Madison Office
8215 Greenway Blvd, Suite 220
Middleton, WI 53562
P.O. Box 7700
Madison, WI 53707
madison.artisreit.com

Kyle Robb, CCIM
Leasing Manager

608.830.6308
krobb@artisreit.com

Leon R. Wilkosz, CCIM, RPA®
Senior Vice-President
Asset Management - Madison
608.830.6302
lwilkosz@artisreit.com



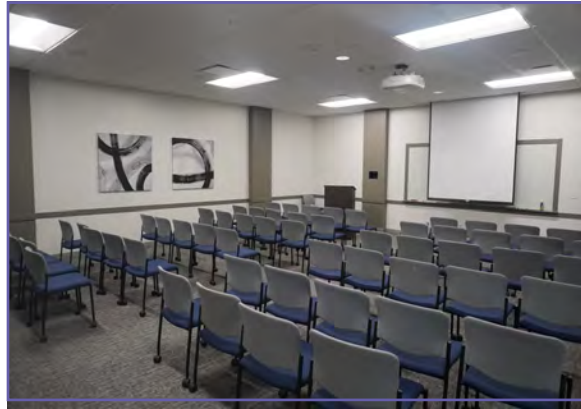
Building & Portfolio Amenities

1232 Fourier Drive, Madison, WI

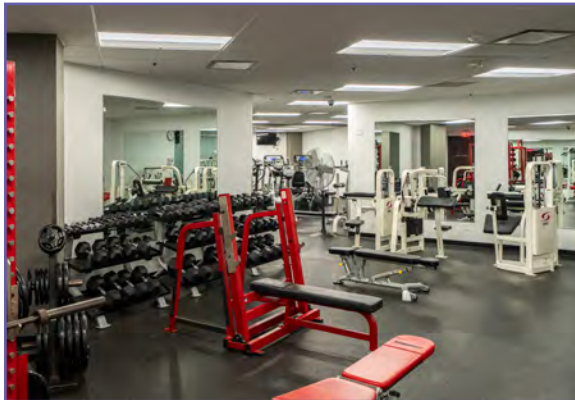
Bright Open Lobby



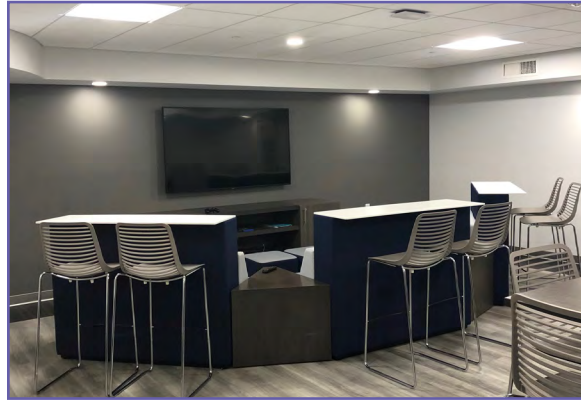
Access to Conference Rooms at Wisconsin Trade Center



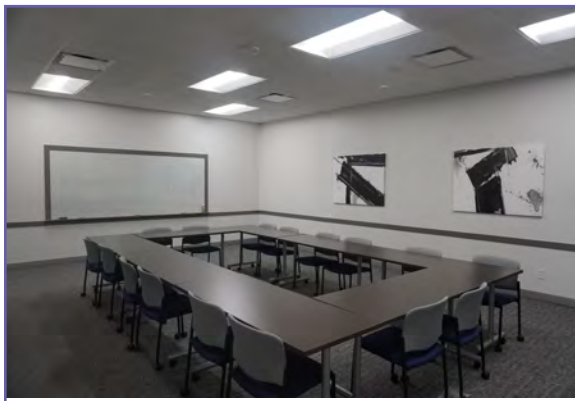
Access to Fitness Center at Wisconsin Trade Center



Access to Gaming Lounge at 8215 Greenway



Access to Board Room at Wisconsin Trade Center

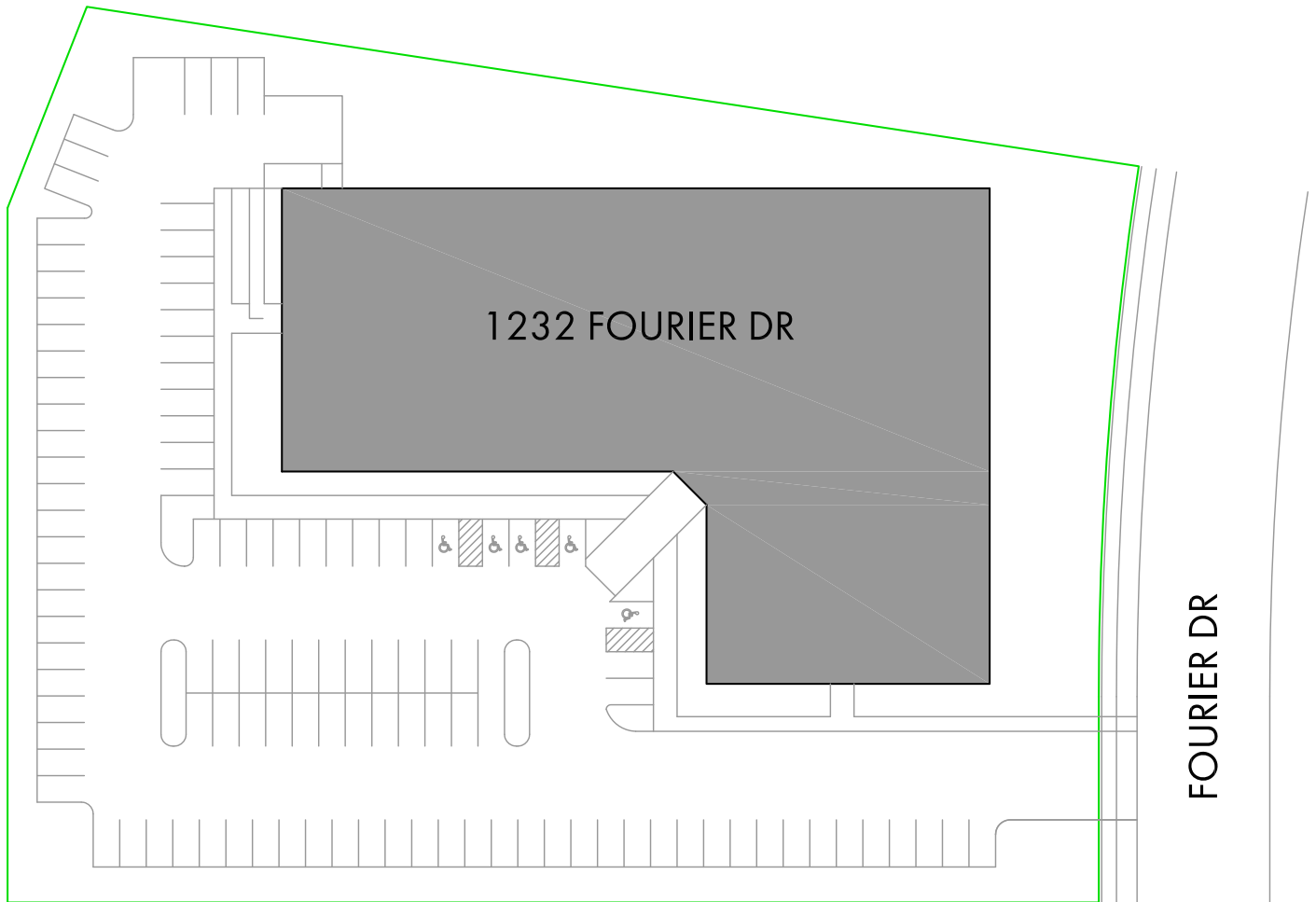


Access to Golf Lounge at City Center West



Site Plan

1232 Fourier Drive, Madison, WI



Location Map

1232 Fourier Drive, Madison, WI

