

# For Sublease

## 2651 Midwest Drive

Onalaska, WI 54650

### Space Profile

<b>Available Space</b>	15,600 - 31,200 SF
<b>Building Size</b>	31,200 SF
<b>Stories</b>	2
<b>Year Built</b>	2009
<b>Parking</b>	6:1,000
<b>OpEx</b>	\$5.50/SF (~2022)
<b>Lease Rate</b>	\$15.00/SF NNN
<b>Term</b>	Through 7/30/2028

### Features

- Building can be delivered fully furnished
- Key Card Access System
- Space is available immediately

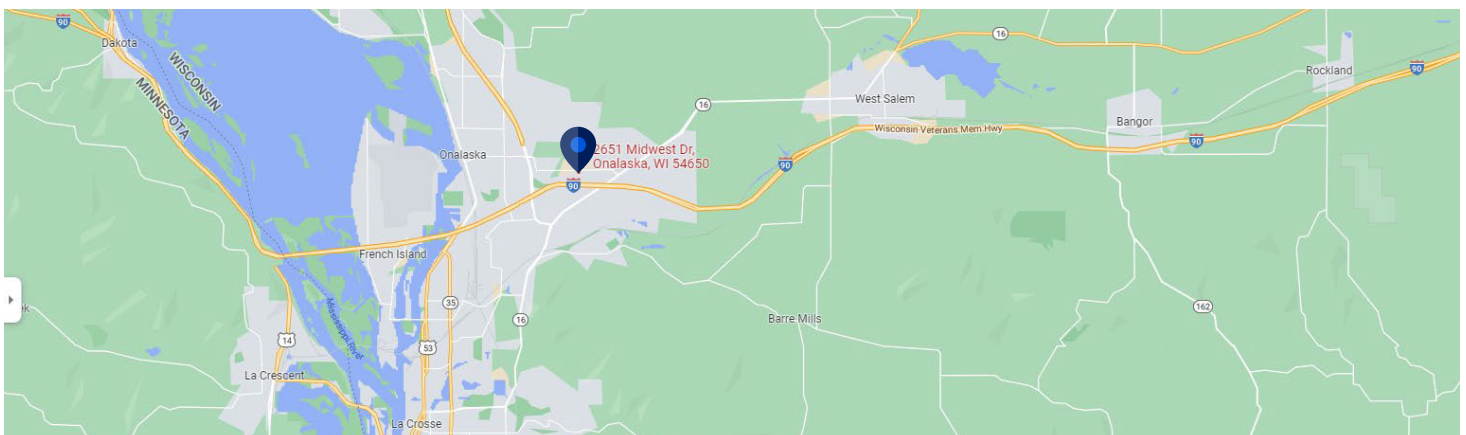
### For More Information

**Cresa**  
613 Williamson Street  
Suite 210  
Madison, WI 53703  
[cresa.com/madison](http://cresa.com/madison)



**Tim Ridders**  
608.669.4153  
[tridders@cresa.com](mailto:tridders@cresa.com)

### Map



Even though obtained from sources deemed reliable, no warranty or representation, express or implied, is made as to the accuracy of the information herein, and it is subject to errors, omissions, change of price, rental or other conditions, withdrawal without notice, and to any special listing conditions imposed by our principals.

**cresa**

Aerial View



For More Information

Cresa  
613 Williamson Street  
Suite 210  
Madison, WI 53703  
[cresa.com/madison](http://cresa.com/madison)



**Tim Ridders**  
608.669.4153  
[tridders@cresa.com](mailto:tridders@cresa.com)



1st Floor



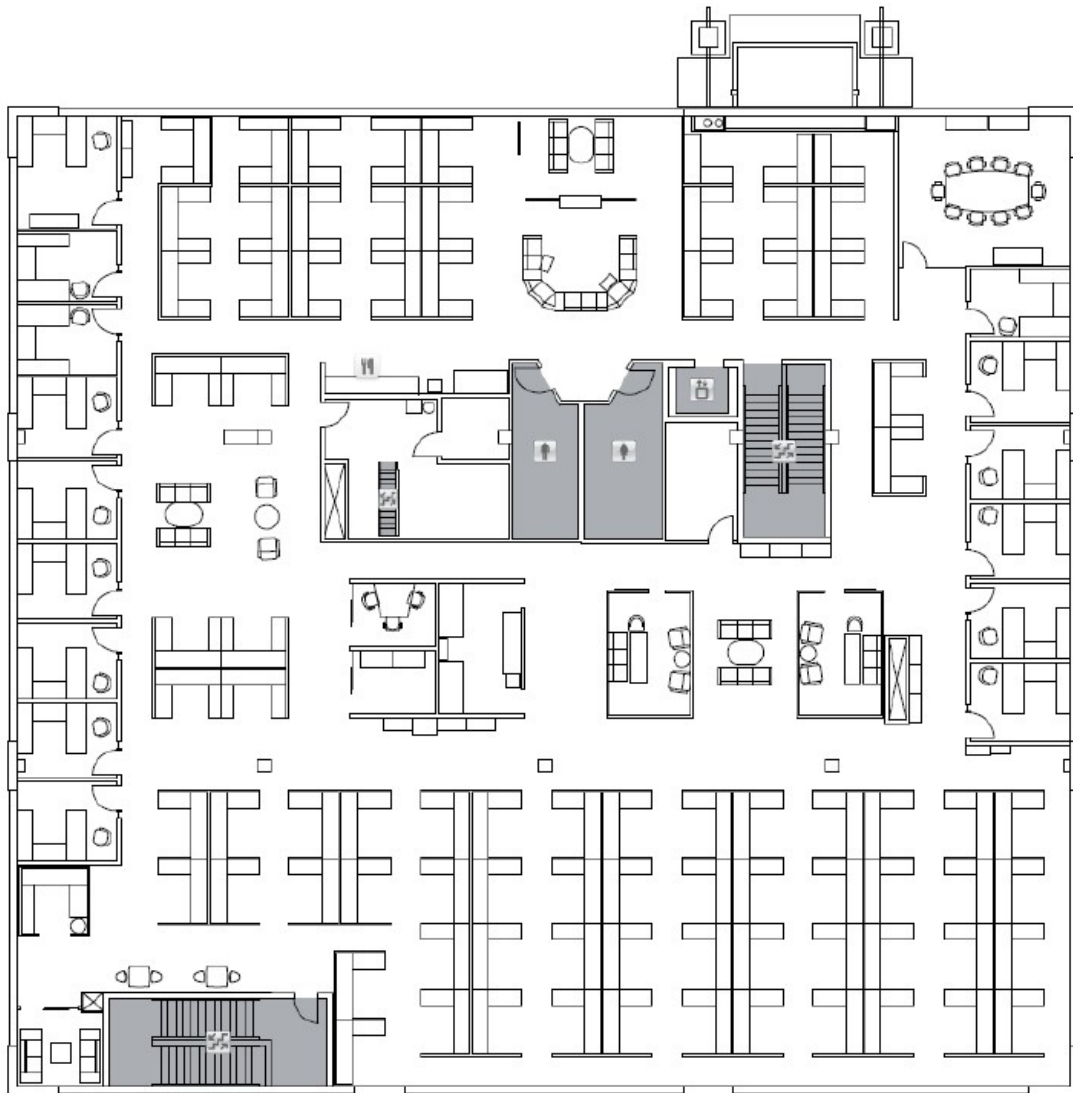
For More Information

Cresa  
613 Williamson Street  
Suite 210  
Madison, WI 53703  
[cresa.com/madison](http://cresa.com/madison)



**Tim Ridders**  
608.669.4153  
[tridders@cresa.com](mailto:tridders@cresa.com)

2nd Floor



For More Information

Cresa  
613 Williamson Street  
Suite 210  
Madison, WI 53703  
[cresa.com/madison](http://cresa.com/madison)

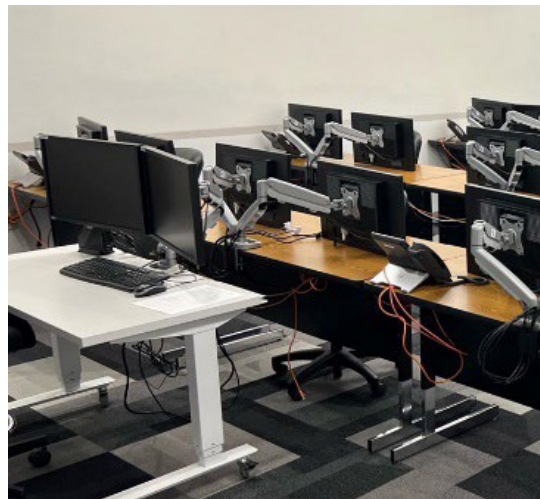
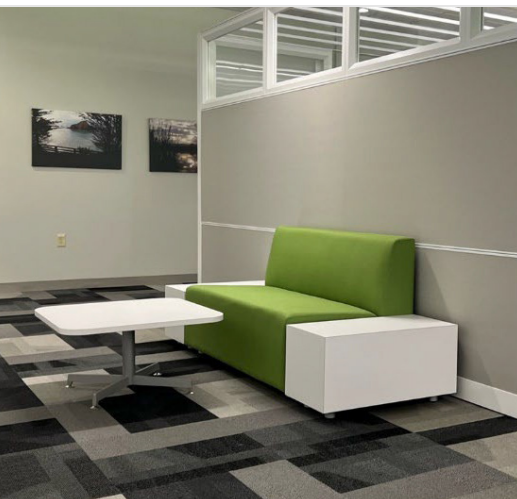


**Tim Ridders**  
608.669.4153  
[tridders@cresa.com](mailto:tridders@cresa.com)



## 2651 Midwest Drive

Onalaska, WI



Cresa © 2019. All rights reserved. The information contained in this document has been obtained from sources believed reliable. While Cresa does not doubt its accuracy, Cresa has not verified it and makes no guarantee, warranty, or representation about it. It is your responsibility to independently confirm its accuracy and completeness. Any projections, opinions, assumptions or estimates used are for example only and do not represent the current or future performance of the property. The value of this transaction to you depends on tax and other factors which should be evaluated by your tax, financial and legal advisors. You and your advisors should conduct a careful, independent investigation of the property to determine to your satisfaction the suitability of the property for your needs.