

**For Lease &
For Sale**

cresa



521 East Washington Avenue

Madison, WI 53703

Property Snapshot

Size	5,013 SF - 2 story <ul style="list-style-type: none">• 3,345 SF 1st floor• 1,668 SF 2nd floor
Parcel Size	10,555 SF
Year Built	1982
Parking	15 Stalls
For Sale:	
Asking Price	\$1,650,000
For Lease:	
Rent	\$25/SF NNN
Term	1 year



Property Profile

- Excellent condition/visibility
- Fully gutted/remodeled in 2020
- Walkable area of downtown Madison
- Hard corner with future redevelopment potential

For More Information:



TJ Blitz

608.444.9440

tblitz@cresa.com

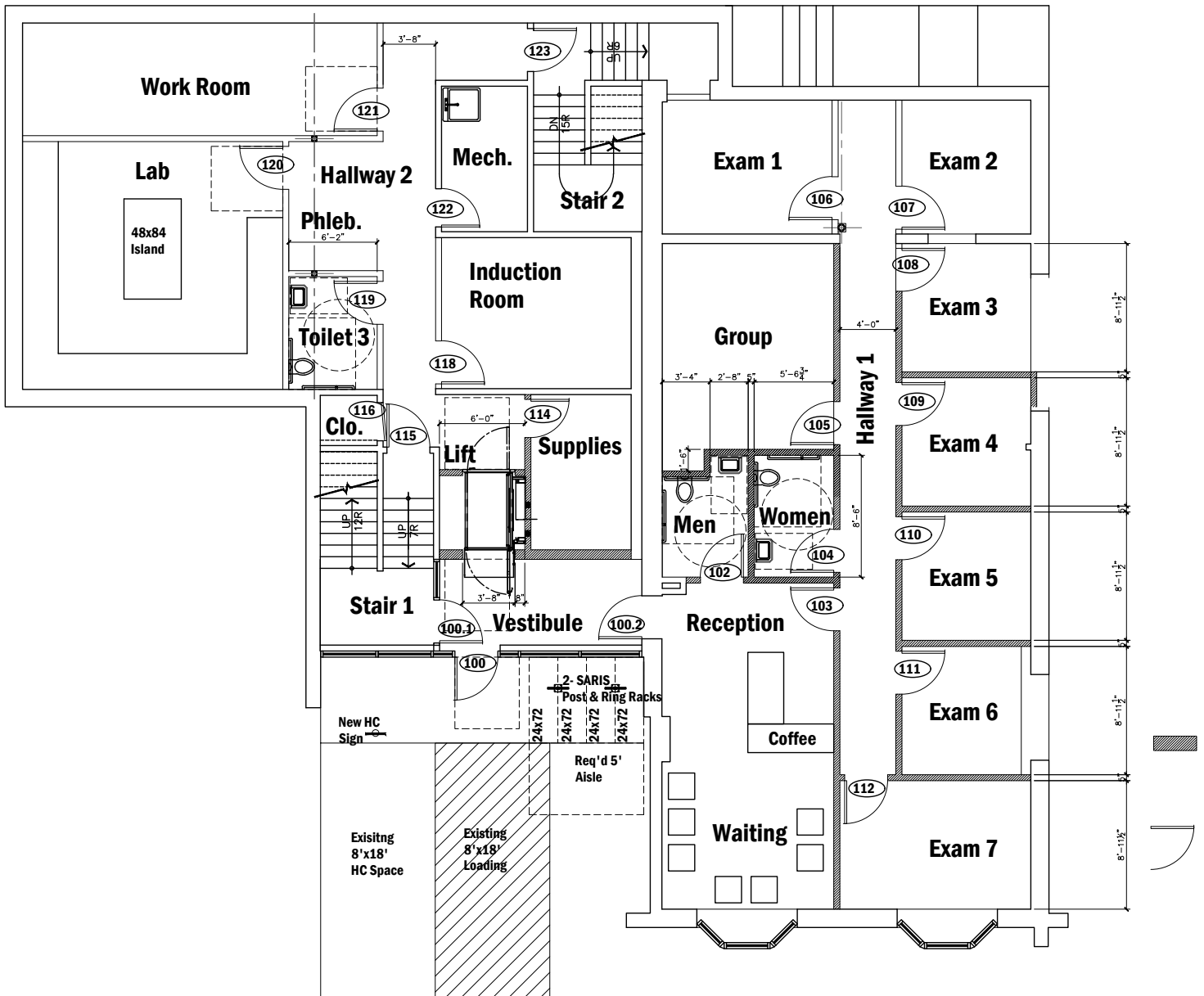
Cresa Madison

613 Williamson Street, 210

Madison WI 53703

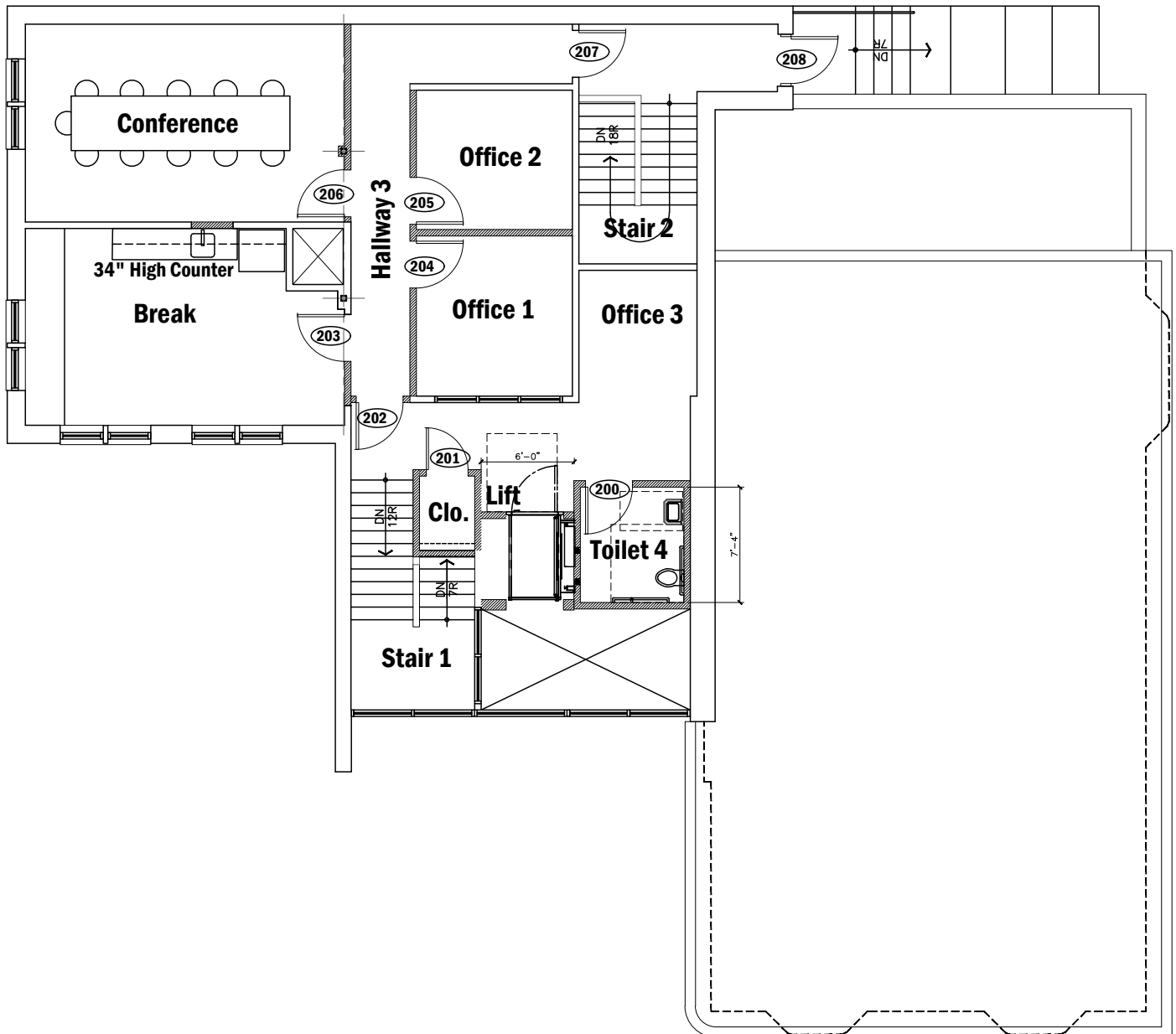
521 E Washington Ave
Madison, WI 53703

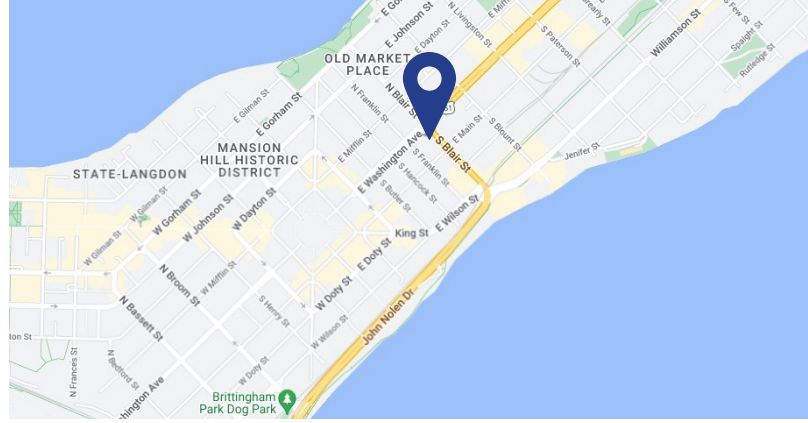
First Floor- Floor plan



521 E Washington Ave
Madison, WI 53703

Second Floor - Floor plan





521 E. Washington Ave

Madison, WI 53703



Cresa © 2019. All rights reserved. The information contained in this document has been obtained from sources believed reliable. While Cresa does not doubt its accuracy, Cresa has not verified it and makes no guarantee, warranty, or representation about it. It is your responsibility to independently confirm its accuracy and completeness. Any projections, opinions, assumptions or estimates used are for example only and do not represent the current or future performance of the property. The value of this transaction to you depends on tax and other factors which should be evaluated by your tax, financial and legal advisors. You and your advisors should conduct a careful, independent investigation of the property to determine to your satisfaction the suitability of the property for your needs.