



LANDMARK PLACE

2901 WEST BELTLINE HIGHWAY – MADISON, WI

BUILDING	Landmark Place is a 60,000 GSF Class-A office building with two-story lobby and perimeter windows with views of the UW Arboretum.
LOCATION	Conveniently located on a highly visible stretch of the central beltline (135,000+ AADT) with prime accessibility on the Todd Drive Exit. Near bike path on the City of Madison Bus Route.
AMENITIES	Landmark Place offers a large common conference room with adjacent kitchenette and break area. The property has two separate outdoor seating areas as well.

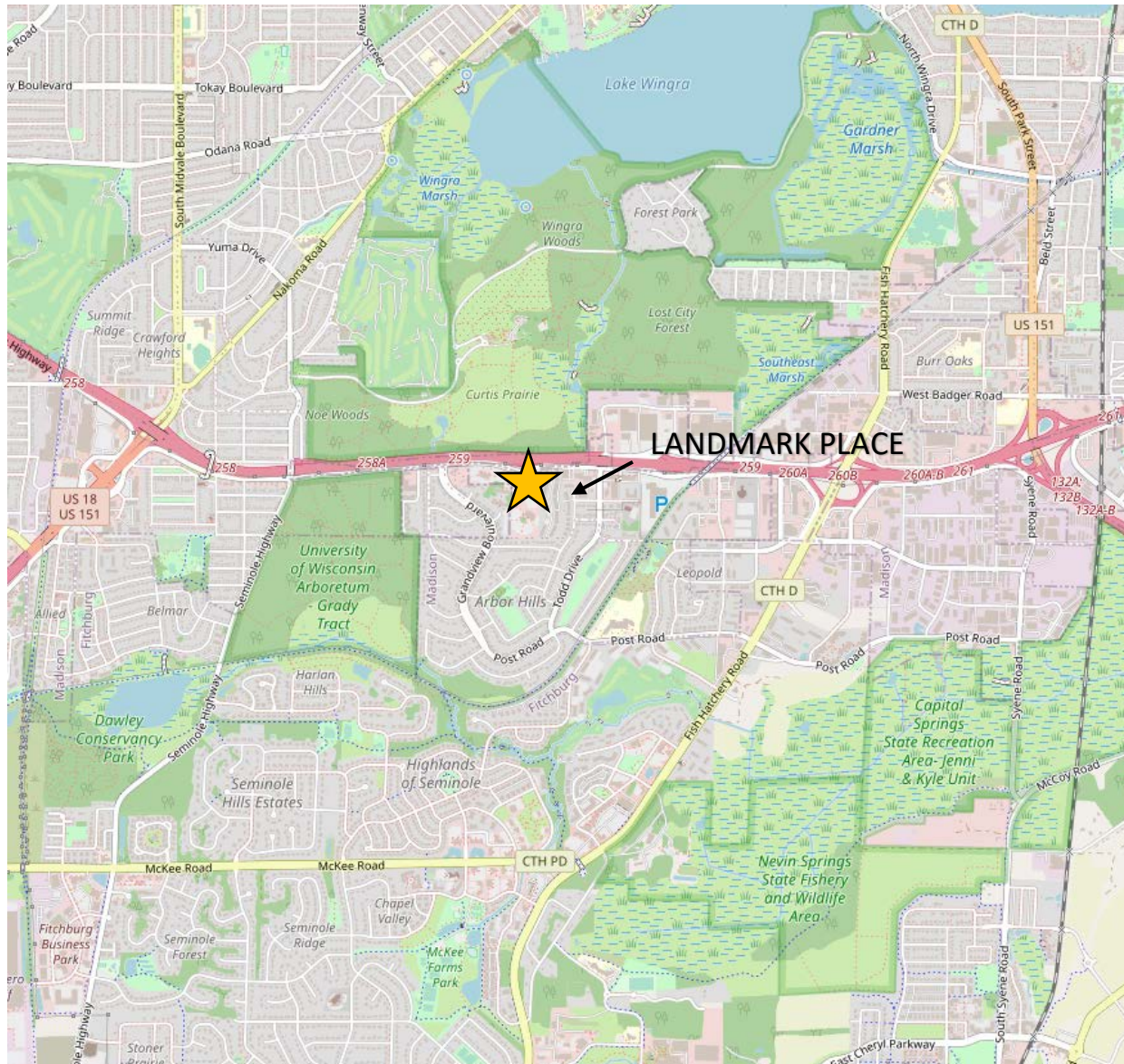
Brandi Zander
VP of Brokerage & Development
608-509-1002
bzander@migllc.biz

MIG Commercial Real Estate
3001 West Beltline Hwy, #202
Madison, WI 53713
www.migllc.biz



MAP VIEW

2901 WEST BELTLINE HIGHWAY – MADISON, WI



Brandi Zander
VP of Brokerage & Development
608-509-1002
bzander@migllc.biz

MIG Commercial Real Estate
3001 West Beltline Hwy, #202
Madison, WI 53713
www.migllc.biz



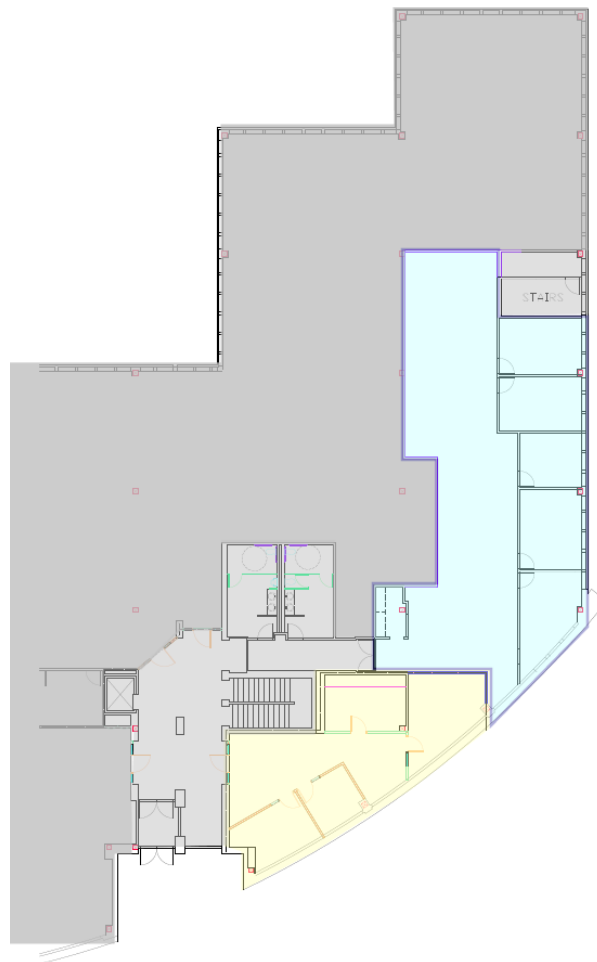
SPACE FOR LEASE

2901 WEST BELTLINE HIGHWAY – MADISON, WI

SECOND FLOOR

■ 2817 USF / 3155 RSF

■ 1223 USF / 1370 RSF



Brandi Zander
VP of Brokerage & Development
608-509-1002
bzander@migllc.biz

MIG Commercial Real Estate
3001 West Beltline Hwy, #202
Madison, WI 53713
www.migllc.biz

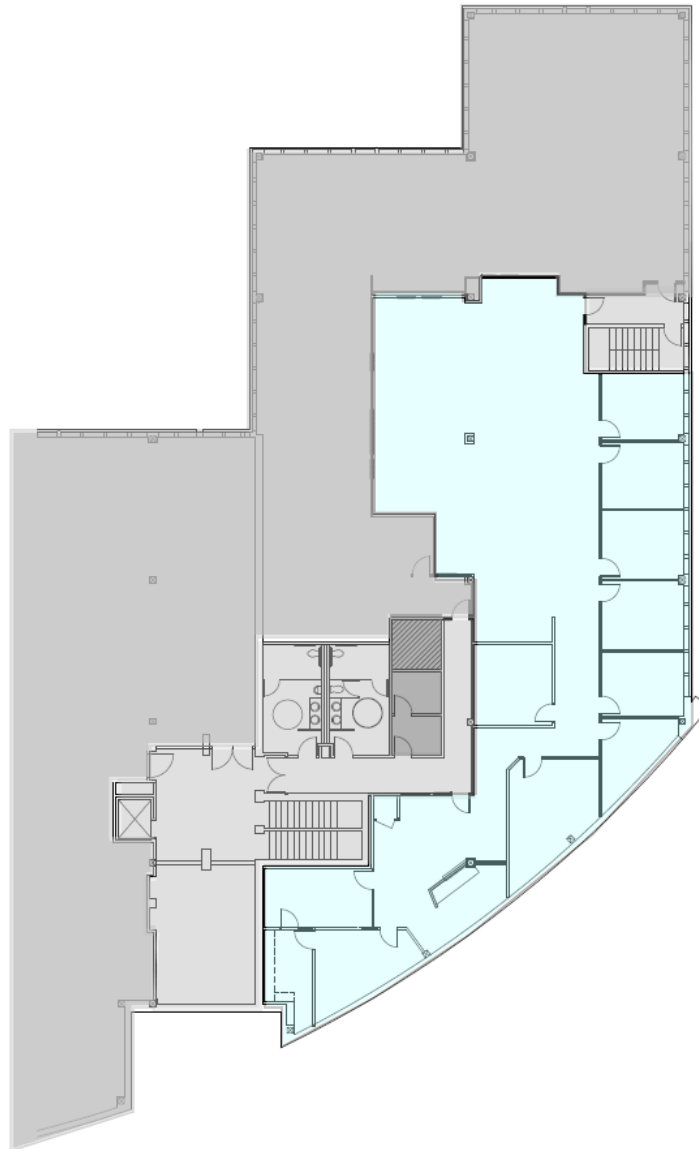


SPACE FOR LEASE

2901 WEST BELTLINE HIGHWAY – MADISON, WI

THIRD FLOOR

4752 USF / 5322 RSF



Brandi Zander
VP of Brokerage & Development
608-509-1002
bzander@migllc.biz

MIG Commercial Real Estate
3001 West Beltline Hwy, #202
Madison, WI 53713
www.migllc.biz