



MADISON BIOHEALTH SPACE

VELOCITY STATION

6417 ODANA ROAD

A DEVELOPMENT BY SARA INVESTMENT REAL ESTATE.



EXACT
SCIENCES

Economics

SIGNAGE

BELTLINE

Total Building SF: 159,000 SF

Minimum Divisibility: 25,000 SF

Site Size: 6.36 Acres

Stories: 3

Parking: 3/1,000

Projected Operating Expenses: TBD

Lease Rate: \$35.00 / SF Net

VELOCITY STATION

6417 ODANA ROAD

ROBERT FULFORD
REAL ESTATE ADVISOR
214.732.4169
rfulford@boerke.com

TAREK SALEH
REAL ESTATE ADVISOR
608.347.6192
tsaleh@boerke.com

MILWAUKEE OFFICE
731 N Jackson Street
Suite 700
Milwaukee, WI 53202

MADISON OFFICE
33 E Main Street
Suite 241
Madison, WI 53703

Boerke.com

VELOCITY STATION | 6417 ODANA ROAD

FEATURES



TANK FARM PAD



EMERGENCY GENERATOR PAD



LOADING BAY



30'X30' COLUMN SPACING



FREIGHT ELEVATOR



16' FLOOR TO FLOOR HEIGHT

ROBERT FULFORD
REAL ESTATE ADVISOR
214.732.4169
rfulford@boerke.com

TAREK SALEH
REAL ESTATE ADVISOR
608.347.6192
tsaleh@boerke.com



VELOCITY STATION | 6417 ODANA ROAD

BUILDING AMENITIES, RESTAURANTS & RETAIL NEARBY



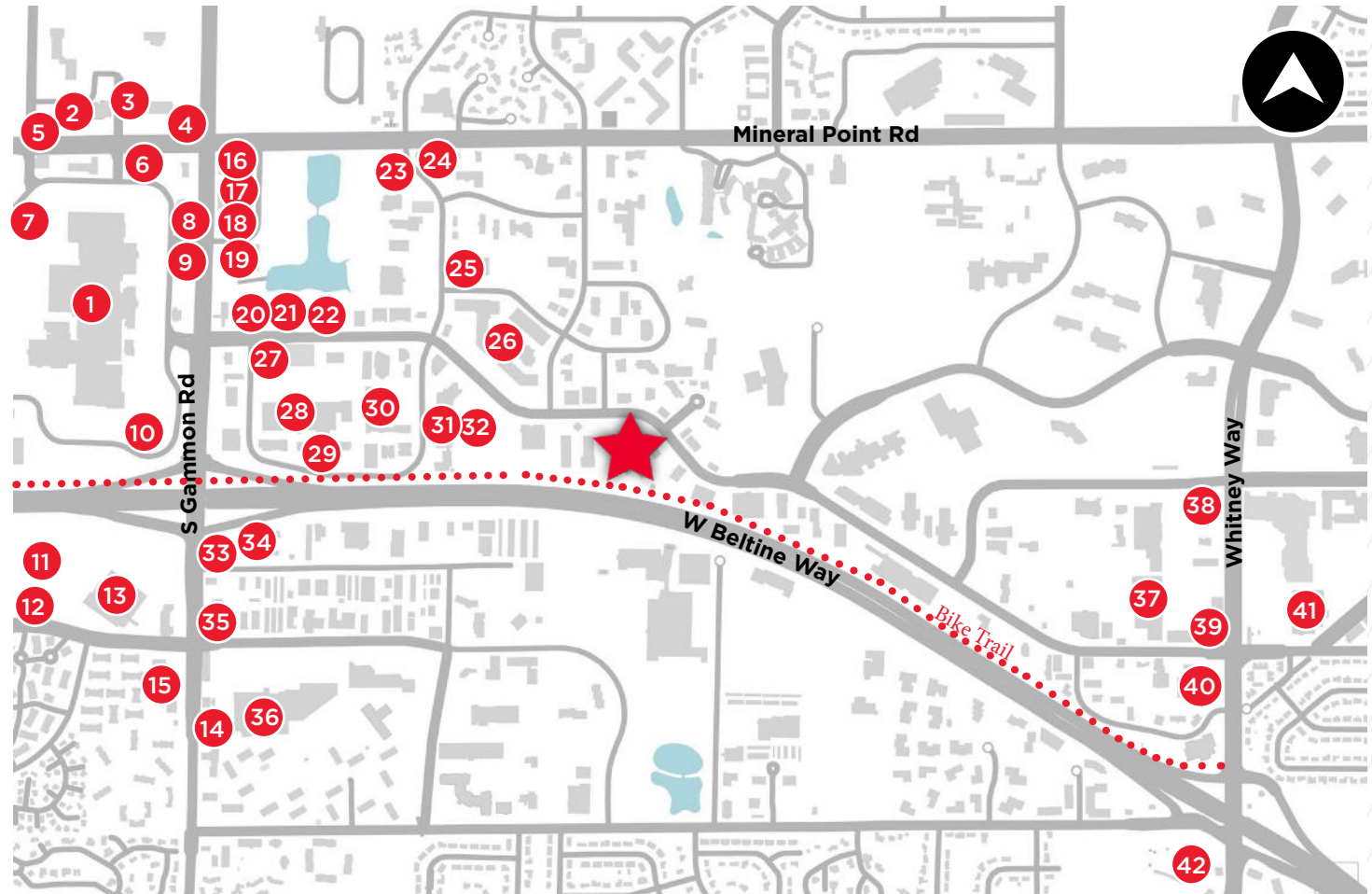
15+
RETAIL



23+
RESTAURANTS



4+
HOTELS

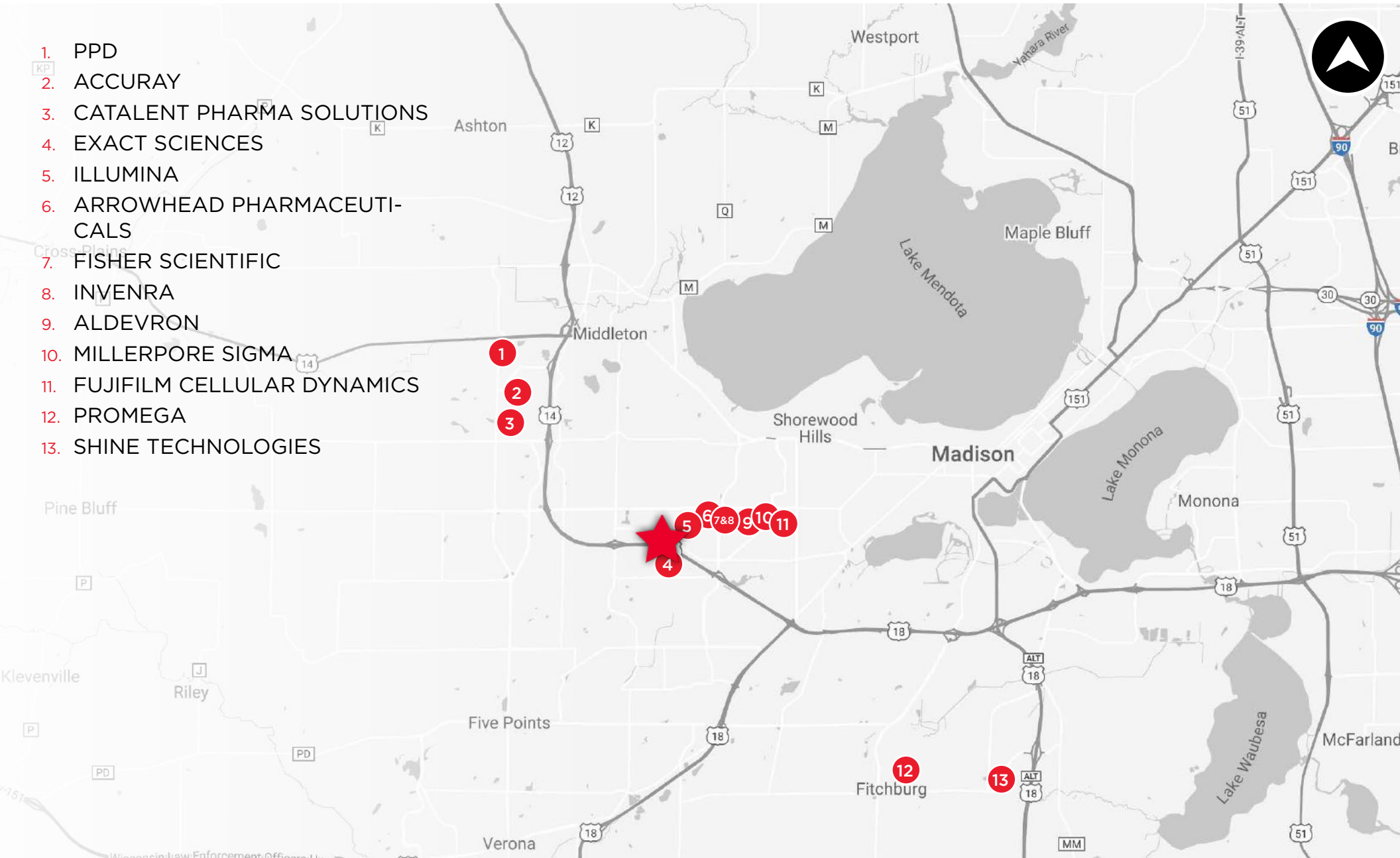


- | | | | |
|------------------------|-----------------------------------|---------------------------------|---------------------|
| 1. West Towne Mall | 12. Texas Roadhouse | 23. CVS Pharmacy | 34. Quality Inn |
| 2. Culvers | 13. At Home | 24. Panera Bread | 35. Wendy's |
| 3. Noodles and Company | 14. Dunkin Donuts | 25. Delaney's Steak | 36. Woodman's |
| 4. Dave's Hot Chicken | 15. Highlands Gates Shopping Cntr | 26. Market Square Shopping Cntr | 37. TJ Maxx |
| 5. MACS | 16. US Bank | 27. Burger King | 38. Walgreens |
| 6. Olive Garden | 17. Jersey Mike's | 28. Ross Dress For Less | 39. Taco Bell |
| 7. Bonefish Grill | 18. Starbucks | 29. Best Western Towne Suites | 40. Subway |
| 8. LongHorn Steakhouse | 19. Denny's | 30. AmericInn By Wyndham | 41. HyVee |
| 9. Chick-Fil-A | 20. McDonald's | 31. Radisson Hotel | 42. Vitense Golfand |
| 10. Portillo's | 21. The Melting Pot | 32. CarMax | |
| 11. Walmart | 22. Saigon Noodles | 33. Verizon | |

VELOCITY STATION | 6417 ODANA ROAD

MADISON BIOHEALTH USERS

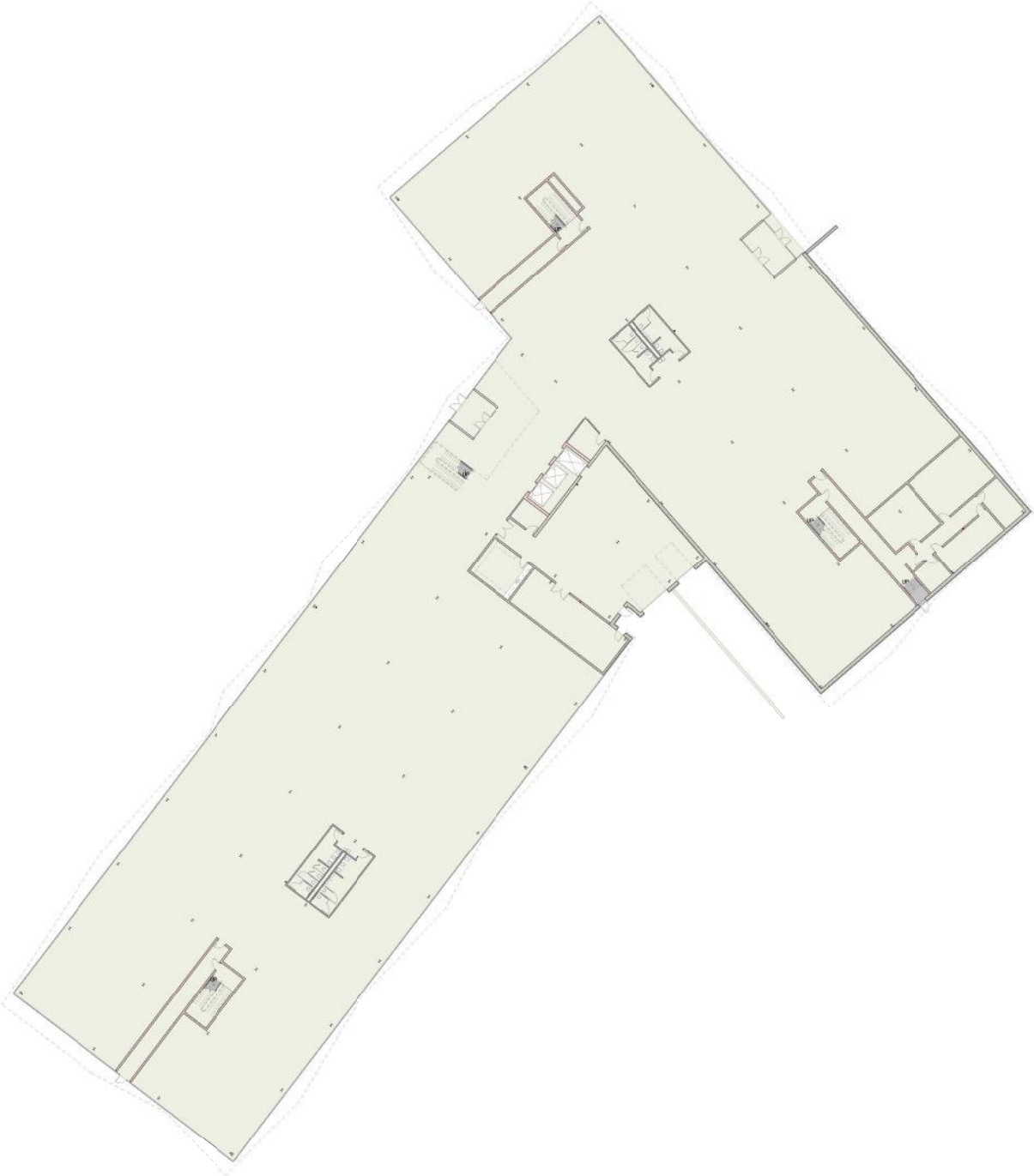
1. PPD
2. ACCURAY
3. CATALENT PHARMA SOLUTIONS
4. EXACT SCIENCES
5. ILLUMINA
6. ARROWHEAD PHARMACEUTICALS
7. FISHER SCIENTIFIC
8. INVENRA
9. ALDEVRON
10. MILLERPORE SIGMA
11. FUJIFILM CELLULAR DYNAMICS
12. PROMEGA
13. SHINE TECHNOLOGIES



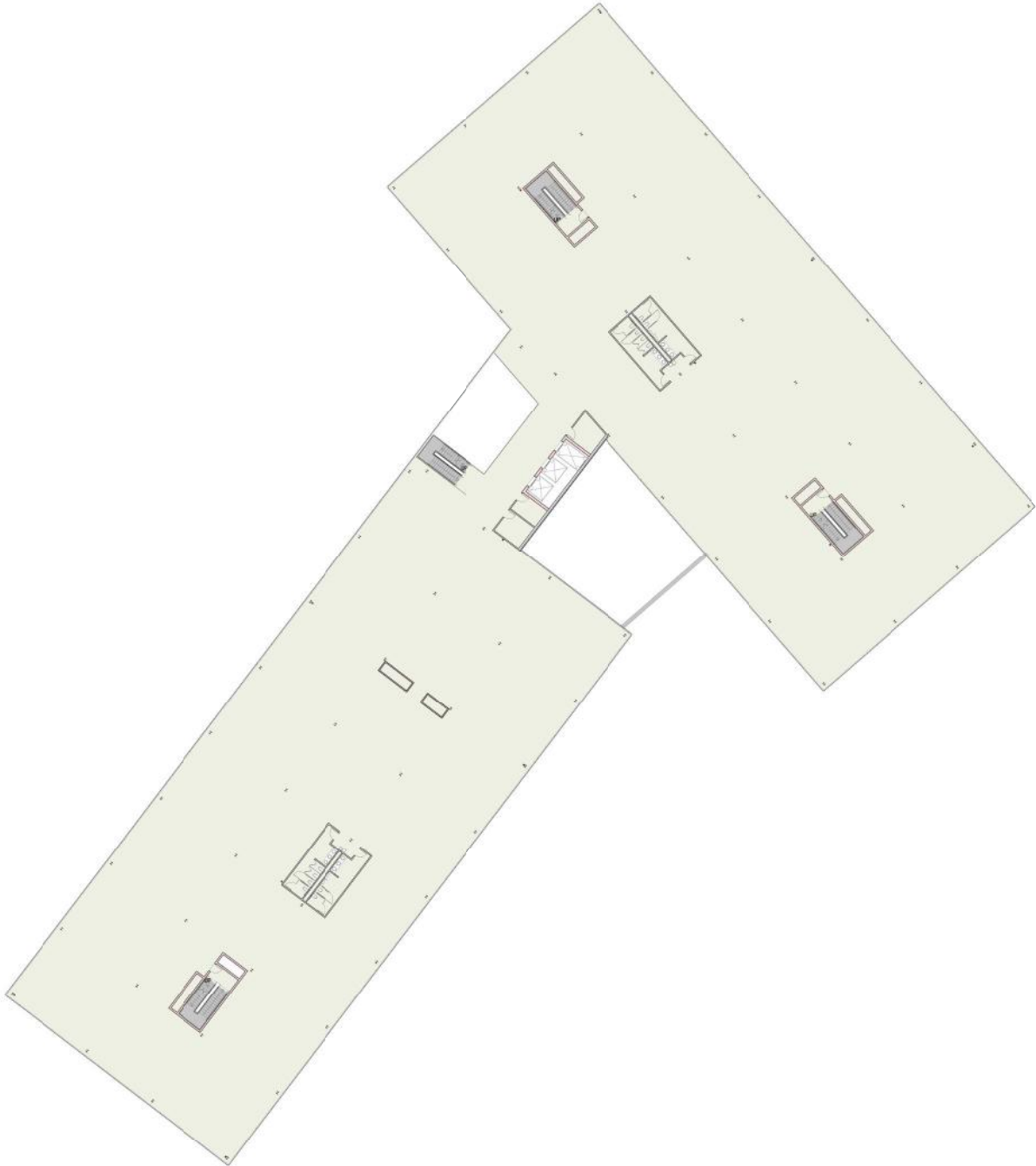
VELOCITY STATION | 6417 ODANA ROAD
SITE AERIAL



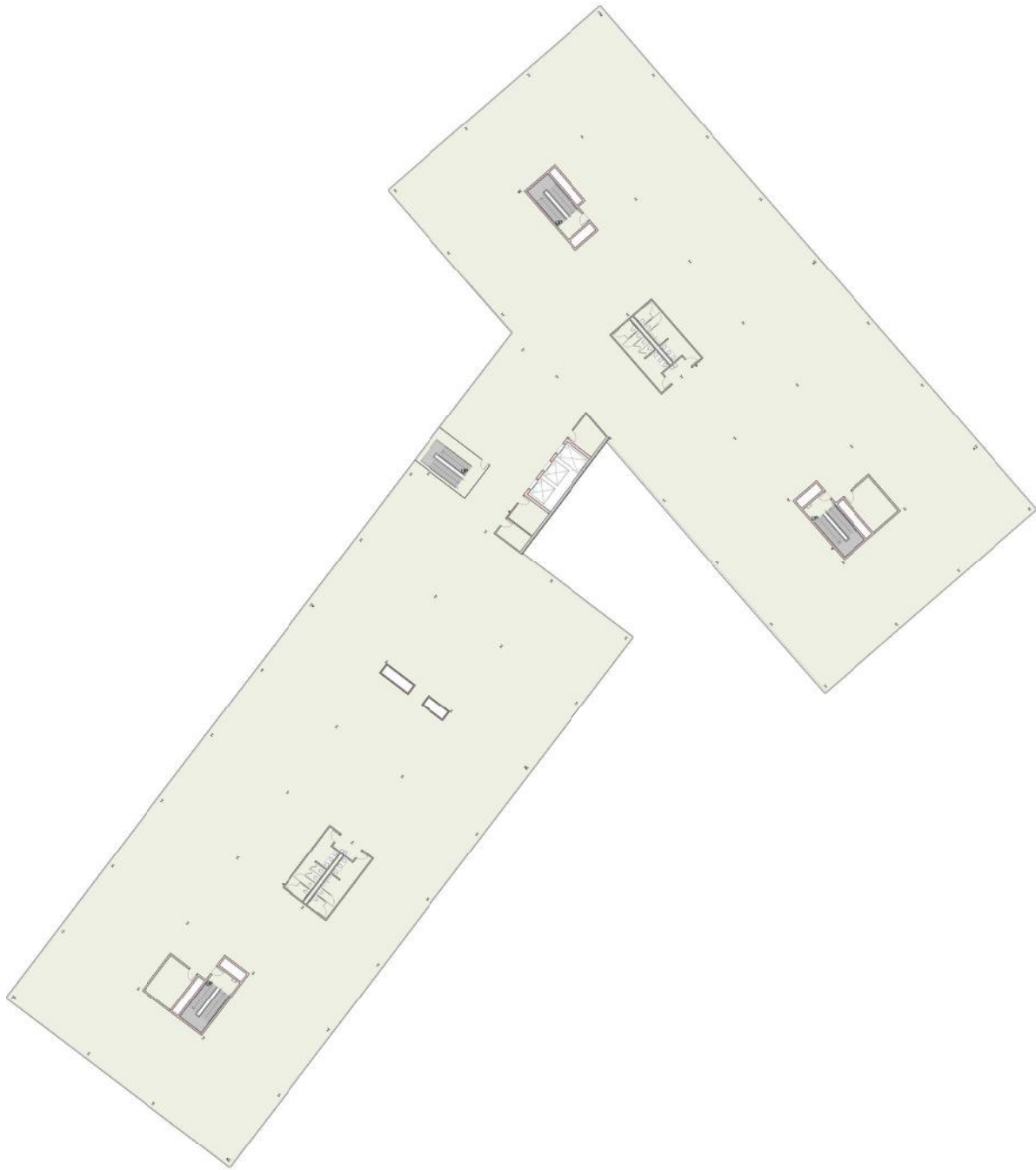
VELOCITY STATION | 6417 ODANA ROAD
1ST FLOOR



VELOCITY STATION | 6417 ODANA ROAD
2ND FLOOR



VELOCITY STATION | 6417 ODANA ROAD
3RD FLOOR



VELOCITY STATION | 6417 ODANA ROAD

AIRPORTS/INTERSTATES

DIRECT FLIGHTS OUT OF DANE

LAS VEGAS
PHOENIX
DENVER
MINNESOTA
CHICAGO
DALLAS FORT WORTH
DETROIT
WASHINGTON DC
CHARLESTON
ATLANTA
ORLANDO
FORT MYERS
PHILADELPHIA
NEWARK
NEW YORK CITY



Dane County Regional Airport recently expanded with a new \$85M 2-story, 90,000 SF south terminal including 3 new gates and additional gates to come.

TRAFFIC COUNTS

75,200 AADT

ODANA ROAD / BELTLINE



VELOCITY STATION

6417 ODANA ROAD

ROBERT FULFORD
REAL ESTATE ADVISOR
214.732.4169
rfulford@boerke.com

TAREK SALEH
REAL ESTATE ADVISOR
608.347.6192
tsaleh@boerke.com

MILWAUKEE OFFICE
731 N Jackson Street
Suite 700
Milwaukee, WI 53202

MADISON OFFICE
33 E Main Street
Suite 241
Madison, WI 53703

Boerke.com



VELOCITY STATION

6417 ODANA ROAD

ROBERT FULFORD
REAL ESTATE ADVISOR
214.732.4169
rfulford@boerke.com

TAREK SALEH
REAL ESTATE ADVISOR
608.347.6192
tsaleh@boerke.com

MILWAUKEE OFFICE
731 N Jackson Street
Suite 700
Milwaukee, WI 53202

MADISON OFFICE
33 E Main Street
Suite 241
Madison, WI 53703

Boerke.com

VELOCITY STATION

6417 ODANA ROAD



FOR MORE INFORMATION, CONTACT:



**CUSHMAN &
WAKEFIELD**

BOERKE

ROBERT FULFORD
REAL ESTATE ADVISOR
214.732.4169
rfulford@boerke.com

TAREK SALEH
REAL ESTATE ADVISOR
608.347.6192
tsaleh@boerke.com

A DEVELOPMENT BY
 **SARA**
INVESTMENT REAL ESTATE

MILWAUKEE OFFICE
731 N Jackson Street
Suite 700
Milwaukee, WI 53202

MADISON OFFICE
33 E Main Street
Suite 241
Madison, WI 53703

Boerke.com

STATE OF WISCONSIN

Disclosure To Non-Residential Customers

Prior to negotiating on your behalf the brokerage firm, or an agent associated with the firm, must provide you the following disclosure statement:

DISCLOSURE TO CUSTOMERS

You are a customer of the brokerage firm (hereinafter Firm). The Firm is either an agent of another party in the transaction or a subagent of another firm that is the agent of another party in the transaction. A broker or a salesperson acting on behalf of the Firm may provide brokerage services to you. Whenever the Firm is providing brokerage services to you, the Firm and its brokers and salespersons (hereinafter Agents) owe you, the customer, the following duties:

- (a) The duty to provide brokerage services to you fairly and honestly.
- (b) The duty to exercise reasonable skill and care in providing brokerage services to you.
- (c) The duty to provide you with accurate information about market conditions within a reasonable time if you request it, unless disclosure of the information is prohibited by law.
- (d) The duty to disclose to you in writing certain Material Adverse Facts about a property, unless disclosure of the information is prohibited by law. (See Definition of Material Adverse Facts below).
- (e) The duty to protect your confidentiality. Unless the law requires it, the Firm and its Agents will not disclose your confidential information or the confidential information of other parties.
- (f) The duty to safeguard trust funds and proposals in an objective and unbiased manner and disclose the advantages and disadvantages of the proposals. other property held by the Firm or its Agents.
- (g) The duty, when negotiating, to present contract proposals in an objective and unbiased manner and disclose the advantages and disadvantages of the proposals.
- Please review this information carefully. An Agent of the Firm can answer your questions about brokerage services, but if you need legal advice, tax advice, or a professional home inspection, contact an attorney, tax advisor, or home inspector. This disclosure is required by section 452.135 of the Wisconsin statutes and is for information only. It is a plain-language summary of the duties owed to a customer under section 452.133(1) of the Wisconsin statutes.

CONFIDENTIALITY NOTICE TO CUSTOMERS

The Firm and its Agents will keep confidential any information given to the Firm or its Agents in confidence, or any information obtained by the Firm and its Agents that a reasonable person would want to be kept confidential, unless the information must be disclosed by law or you authorize the Firm to disclose particular information. The Firm and its Agents shall continue to keep the information confidential after the Firm is no longer providing brokerage services to you.

- The following information is required to be disclosed by law:
 1. Material Adverse Facts, as defined in Wis. Stat. § 452.01(5g) (see "Definition of Material Adverse Facts" below).
 2. Any facts known by the Firm or its Agents that contradict any information included in a written inspection report on the property or real estate that is the subject of the transaction.

To ensure that the Firm and its Agents are aware of what specific information you consider confidential, you may list that information below. At a later time, you may also provide the Firm or its Agents with other Information you consider to be confidential.

CONFIDENTIAL INFORMATION:

NON- CONFIDENTIAL INFORMATION *(the following information may be disclosed by the Firm and its Agents):*

(Insert information you authorize to be disclosed, such as financial qualification information.)

DEFINITION OF MATERIAL ADVERSE FACTS

A "Material Adverse Fact" is defined in Wis. Stat. § 452.01(5g) as an Adverse Fact that a party indicates is of such significance, or that is generally recognized by a competent licensee as being of such significance to a reasonable party, that it affects or would affect the party's decision to enter into a contract or agreement concerning a transaction or affects or would affect the party's decision about the terms of such a contract or agreement.

An "Adverse Fact" is defined in Wis. Stat. § 452.01(1e) as a condition or occurrence that a competent licensee generally recognizes will significantly and adversely affect the value of the property, significantly reduce the structural integrity of improvements to real estate, or present a significant health risk to occupants of the property; or information that indicates that a party to a transaction is not able to or does not intend to meet his or her obligations under a contract or agreement made concerning the transaction.

NOTICE ABOUT SEX OFFENDER REGISTRY

You may obtain information about the sex offender registry and persons registered with the registry by contacting the Wisconsin Department of Corrections on the Internet at <http://www.doc.wi.gov> or by telephone at 608-240-5830.