

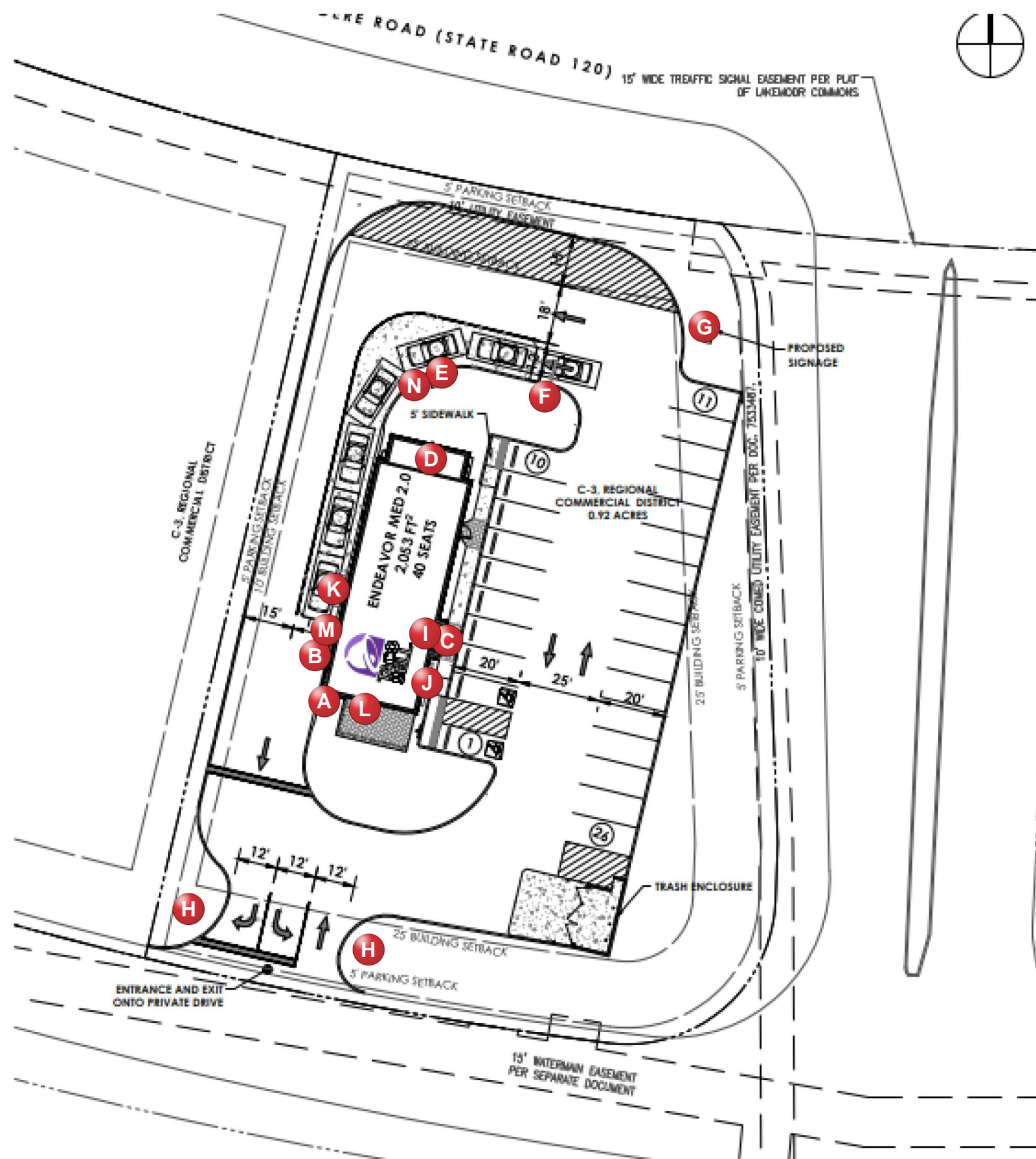


Prepared Exclusively for
SITE TB40434

BELVIDERE ROAD
LAKEMOOR, IL 60050

March 25, 2022

Account Manager: Christopher Koob
ckoob@everbrite.com (414) 529-3500

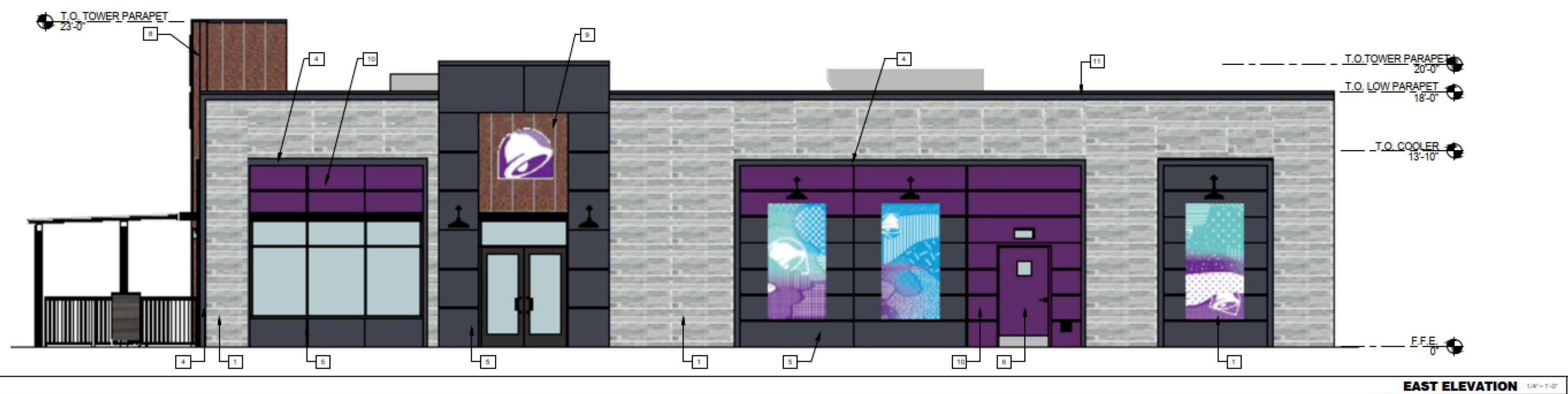


Sign Schedule

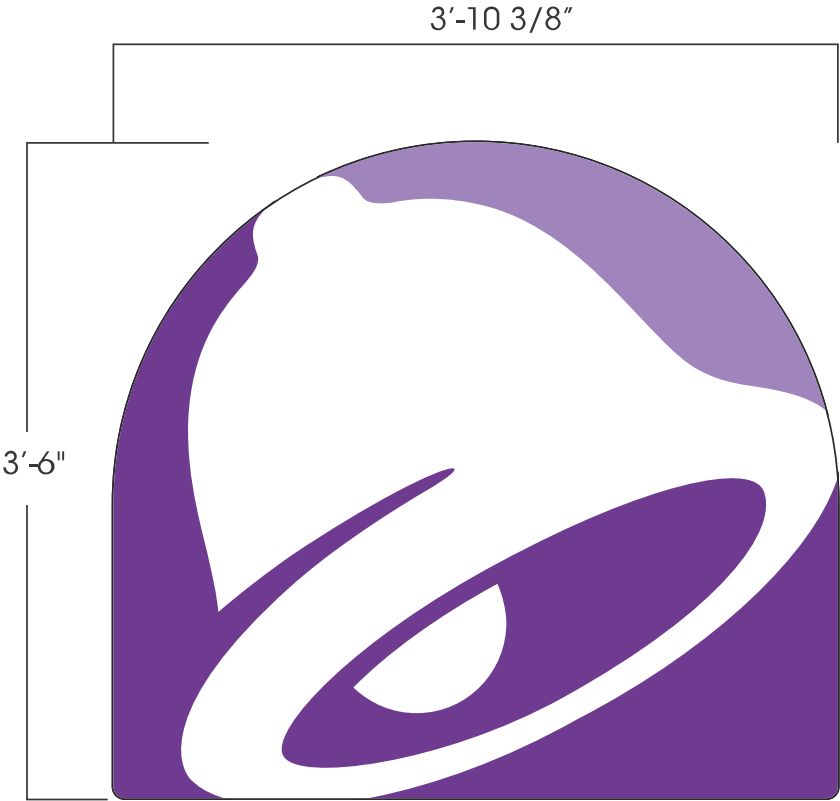
- A** TB 3'6X3'10 BELL LOGO/TB 14" LED WM WHITE STACKED
- B** NO SIGNAGE PURPLE LIGHTS ONLY
- C** TB 3'6X3'10 BELL LOGO
- D** TB 2'0X2'2 BELL LOGO/TB 12" LED WM WHITE LINEAR
- E** ORDER POINT CANOPY - NO SHROUD - BLACK
- F** CLEARANCE BAR - 9' CLEARANCE BLACK
- G** New Monument 10' OAH 52SQ.FT.
- H** (2) TB 4 SQFT BLK/PUR DIR RD DF LED
- I** CNPY,TB 6"X6'4X3' WO/UPLT
- J** CNPY,TB 6"X12'X1'4 WO/UPLT
- K** CNPY,TB 6"X9'X4' DT TRNBKL
- L** CNPY,TB 6"X16'7X1'4 WO/UPLT
- M** CNPY,TB 6"X7'8X1'4 W/O UPLIGHT 203.EN BLK
- N** MENUBOARD AND SPEAKER POST



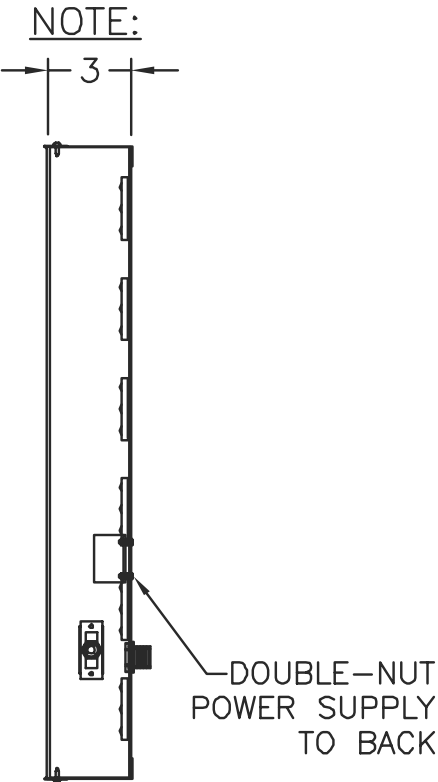








Sign Area: 13.41 Sq. Ft. (Squared)



GENERAL SPECIFICATIONS:

3" aluminum returns & trim cap w/ black finish
.150 White poly face w/ vinyl applied to first surface

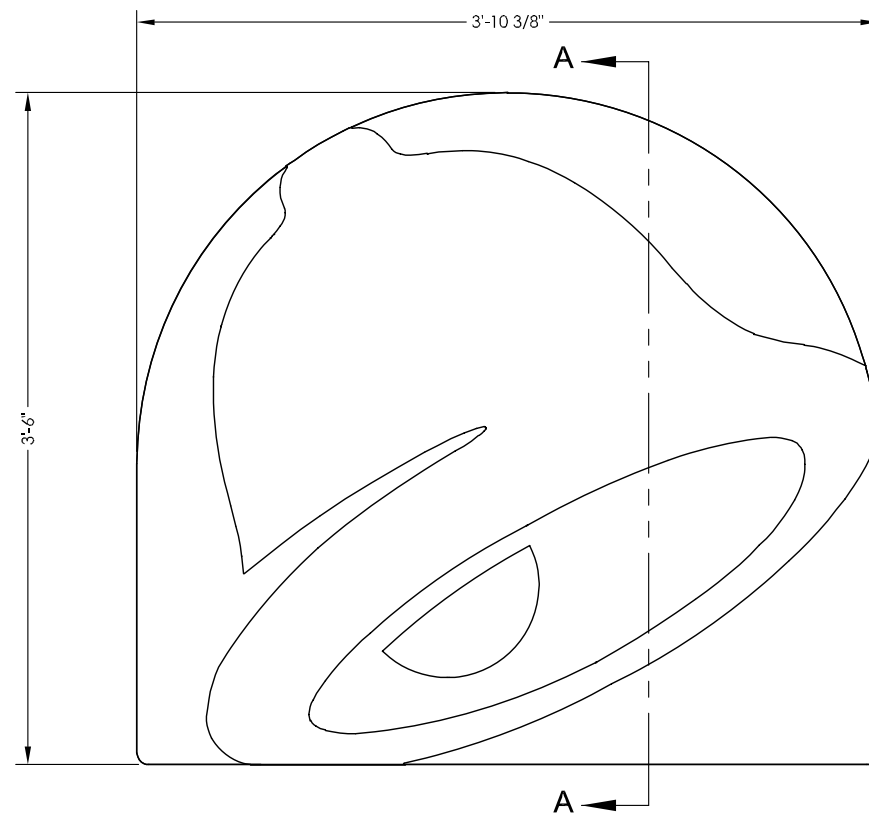
ELECTRICAL SPECIFICATIONS:

- LED: LS-PRO160-50K-2B1
- Power Supply: One (1) 60 watt
- .9 amps @ 100-277 VAC
- One (1) 20 amp circuit

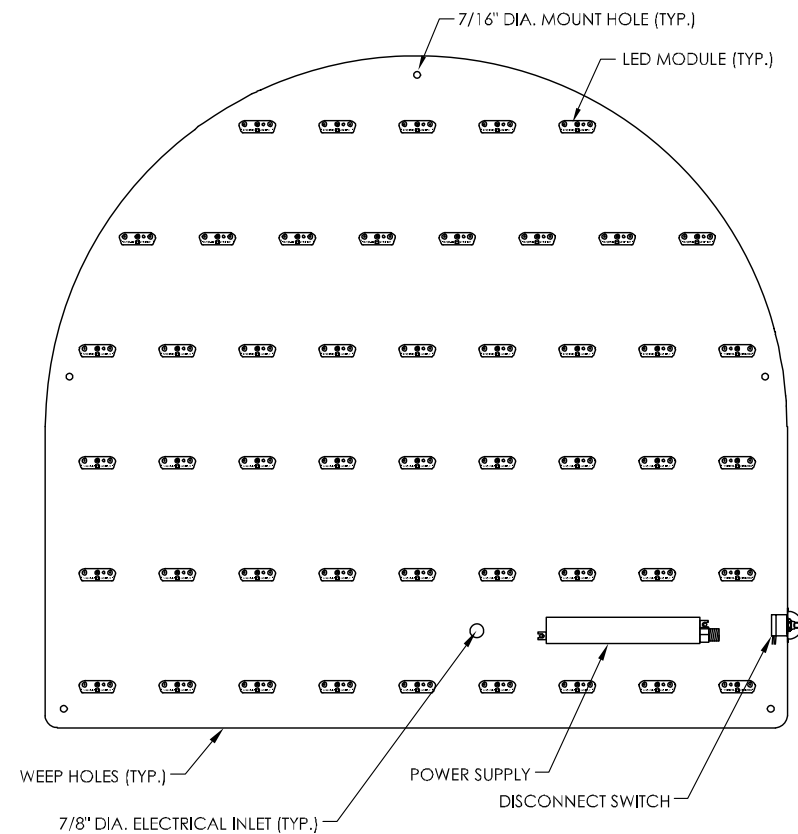
COLORS:

Dark Purple: 3630-9327; PMS 2603
Light Purple: 3630-9141; PMS 2577
Black
White

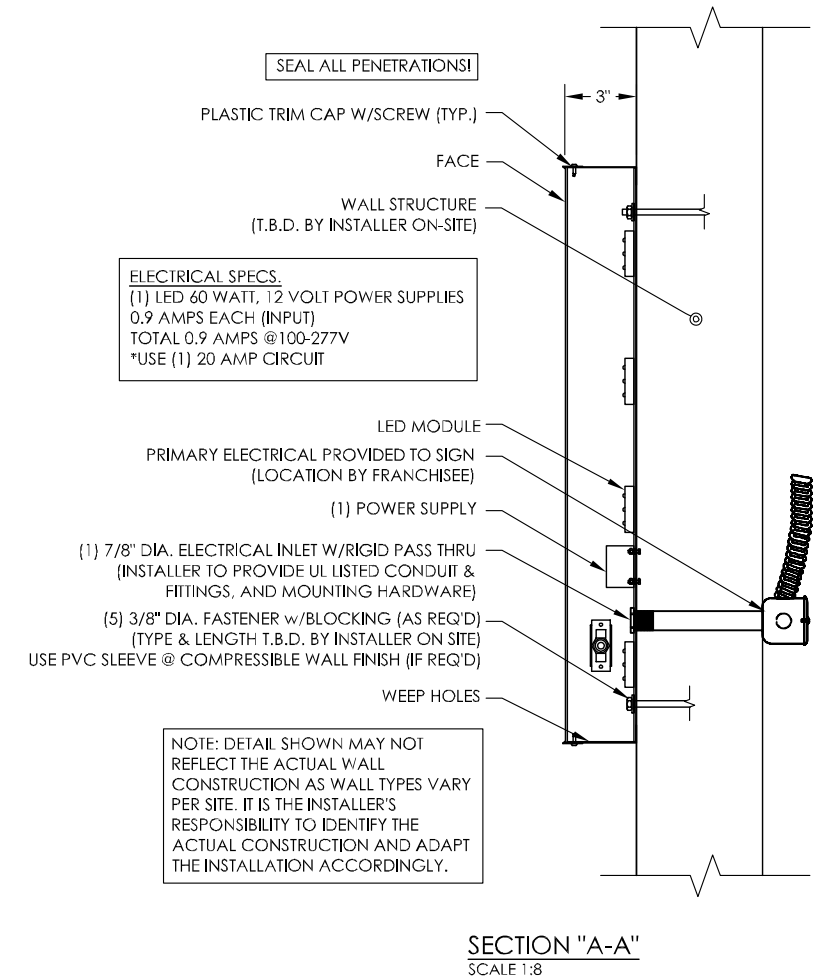
These product sheets are the exclusive property of Everbrite LLC. Use of this property in any manner without express written permission of Everbrite LLC is prohibited. Drawings are for graphic purposes only and not intended for actual construction. For more specific manufacturing detail, please refer to engineering specifications and install drawings.



FRONT VIEW (w/ FACES)
SCALE 1:12



FRONT VIEW (w/o FACES)
SCALE 1:12



GENERAL NOTES

INSTALLER TO PROVIDE COMPLETION PHOTOS OF MOUNTING/CONNECTION POINTS, WIRE ROUTING AND OVERALL ELEVATION.

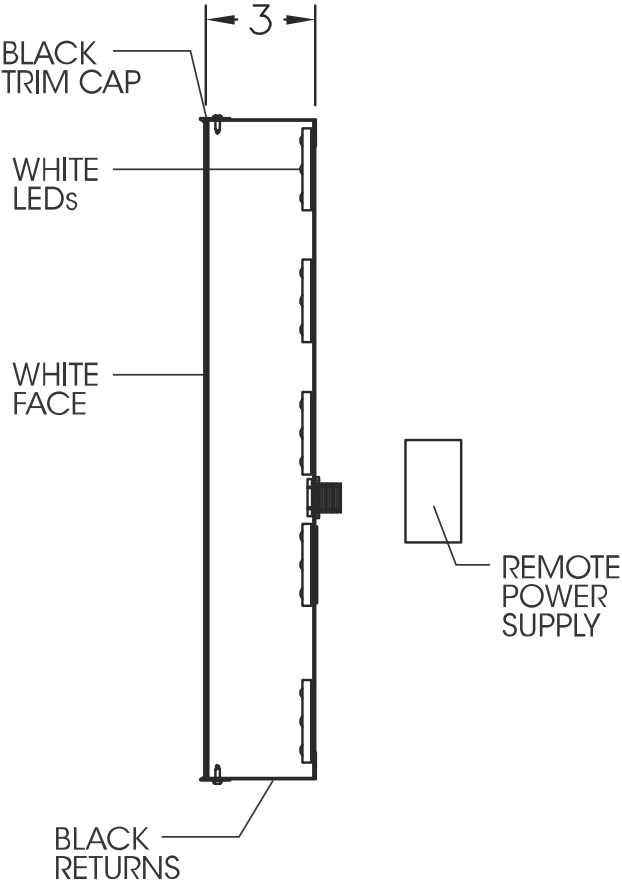
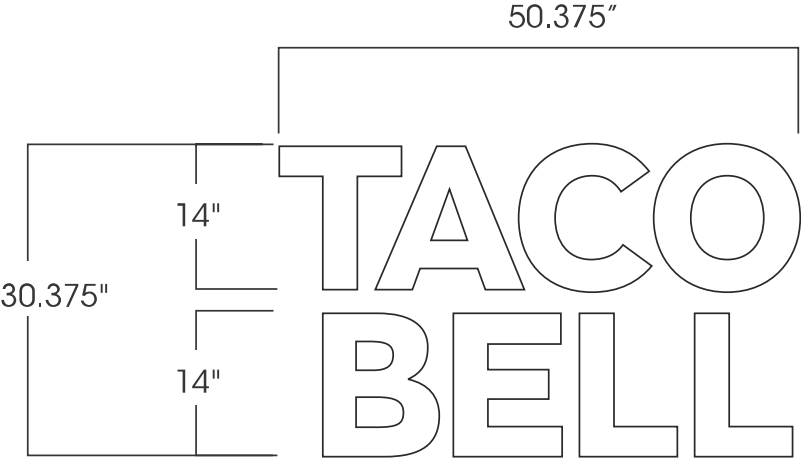
THIS SIGN IS INTENDED TO BE INSTALLED IN ACCORDANCE WITH THE REQUIREMENTS OF ARTICLE 600 OF THE NATIONAL ELECTRIC CODE AND/OR OTHER APPLICABLE LOCAL CODES. THIS INCLUDES PROPER GROUNDING AND BONDING OF THE SIGN.

INSTALLER TO VERIFY SIGN IS PROPERLY INSTALLED, CONNECTED AND GROUNDED.

THIS DRAWING IS FOR INSTALLATION PURPOSES ONLY AND NOT TO BE USED FOR MANUFACTURING.

INSTALLATION INSTRUCTIONS

1. OPEN PACKAGING CAREFULLY AND INSPECT FOR DAMAGE. IF DAMAGE IS FOUND, CLAIM MUST BE FILED WITHIN 5-DAYS WITH SHIPPING AGENT.
2. DETERMINE SIGN LOCATION AND TAPE UP THE PROVIDED TEMPLATE ON THE SURFACE TO WHICH IT WILL BE INSTALLED. RECEIVE CONFIRMATION FROM CLIENT OR CONTRACTOR.
3. LAYOUT AND PRE-DRILL ALL REQUIRED MOUNTING AND ELECTRICAL HOLES.
4. FILL ALL HOLES WITH SILICONE PRIOR TO MOUNTING THE SIGN.
5. ALIGN LETTERS TO MATCHING PRE-DRILLED HOLES WHILE INSERTING FASTENERS THROUGH LETTERS, WALL AND BLOCKING (AS REQ'D). FASTEN WITH HARDWARE. USE PVC SLEEVES TO PROTECT WALL FINISH OVER SHEATHING (IF NECESSARY).
6. MAKE FINAL ELECTRICAL HOOK UP TO PRIMARY WIRING OF POWER SUPPLIES THROUGH DRILLED ELECTRICAL HOLES.
7. TEST LIGHT FOR PROPER FUNCTION AND ILLUMINATION.
8. PERFORM TOUCH-UP AS REQUIRED
9. CLEAN INSTALLATION WORK SITE OF ALL EXCESS MATERIALS AND DEBRIS. DO NOT DISCARD ANY MATERIAL OR DEBRIS INTO ON SITE DUMPSTERS.



GENERAL SPECIFICATIONS:

- 3" Deep fabricated aluminum cabinet, black
- .118 #7328 White acrylic faces w/ 3/4" black trim cap
- Internally illuminated with white LEDs
- Sign Area (Squared): 10.62

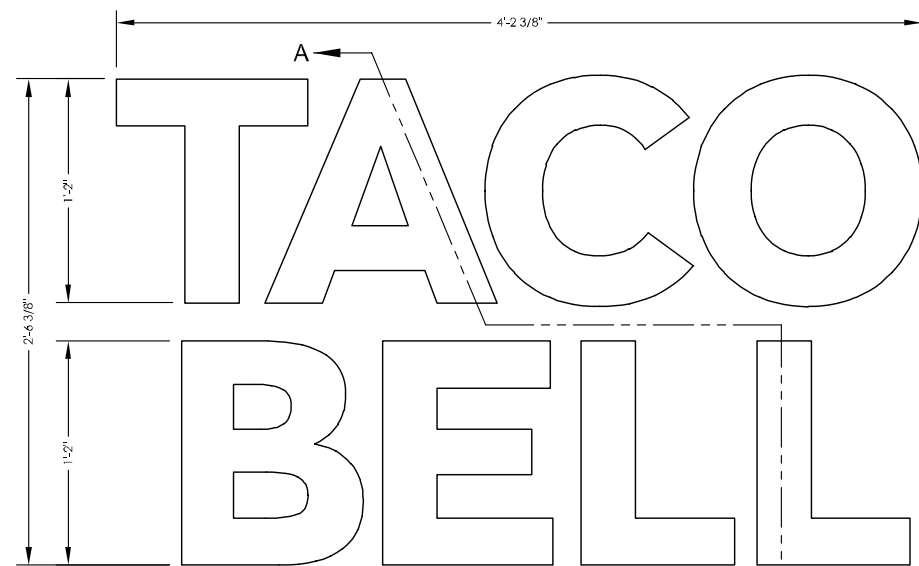
ELECTRICAL SPECIFICATIONS:

- White LEDs
- Power Supply: One (1) 60 watt
.90amps @ 100-277 V
- One (1) 20 amp circuit, 60HZ UL 48 & NEC compliant

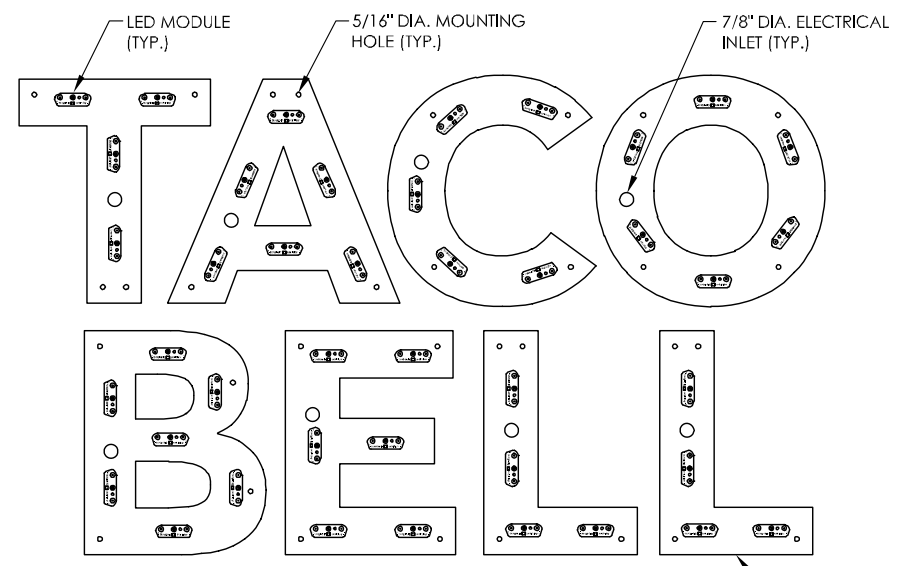
COLOR SPECIFICATIONS:

Black
White

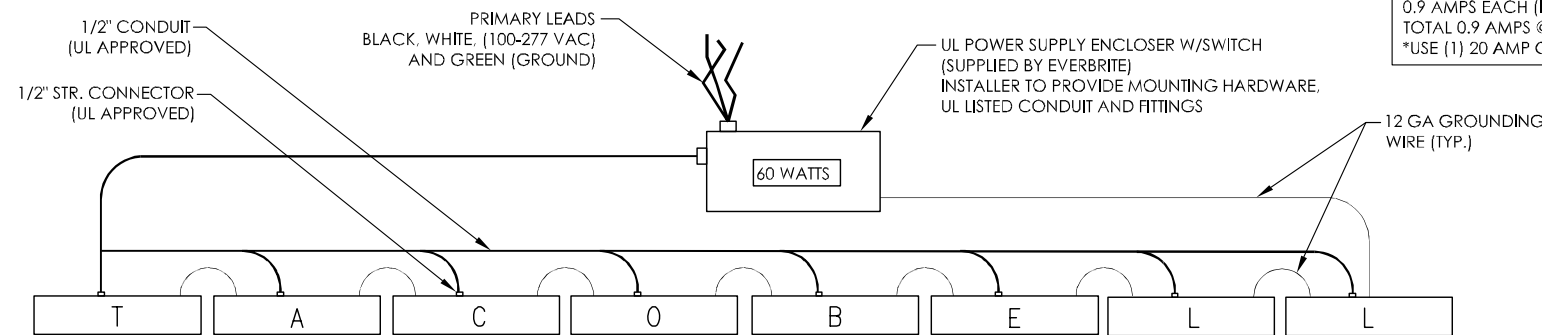
These product sheets are the exclusive property of Everbrite LLC. Use of this property in any manner without express written permission of Everbrite LLC is prohibited. Drawings are for graphic purposes only and not intended for actual construction. For more specific manufacturing detail, please refer to engineering specifications and install drawings.



FRONT VIEW (w/FACES)
SCALE 1:12

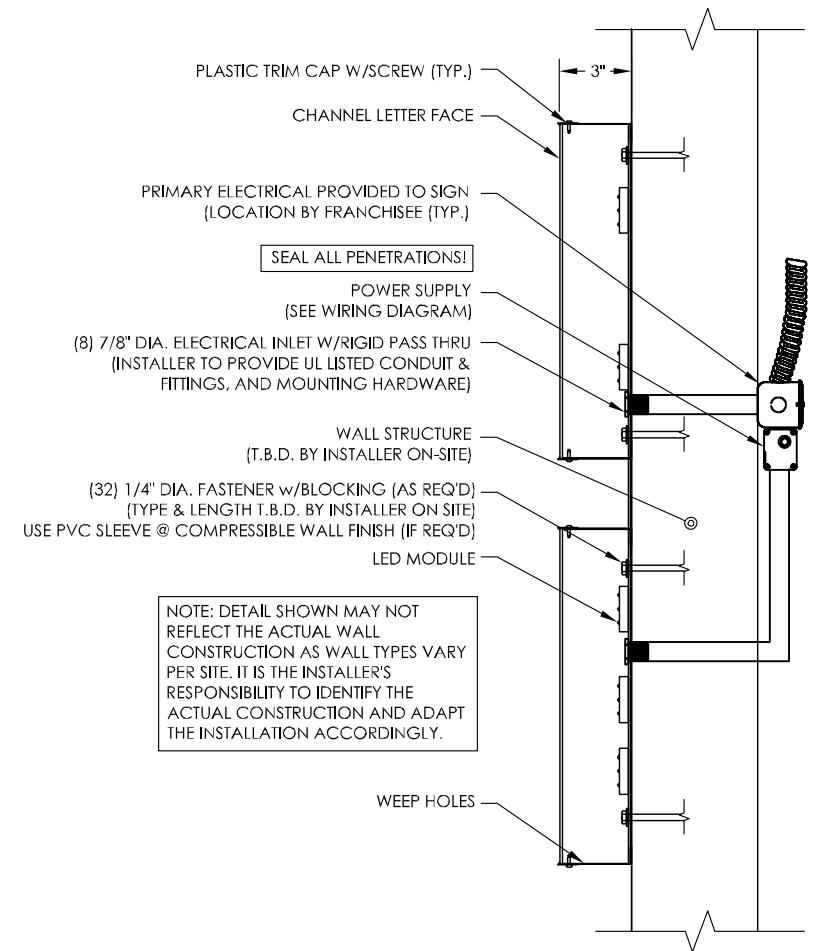


FRONT VIEW (w/o FACES)
SCALE 1:12



WIRING DIAGRAM
SCALE: NONE

ELECTRICAL SPECS.
(1) LED 60 WATT, 12 VOLT POWER SUPPLY
0.9 AMPS EACH (INPUT)
TOTAL 0.9 AMPS @100-277V
*USE (1) 20 AMP CIRCUIT



SECTION "A-A"
SCALE 1:8

GENERAL NOTES

INSTALLER TO PROVIDE COMPLETION PHOTOS OF MOUNTING/CONNECTION POINTS, WIRE ROUTING AND OVERALL ELEVATION.

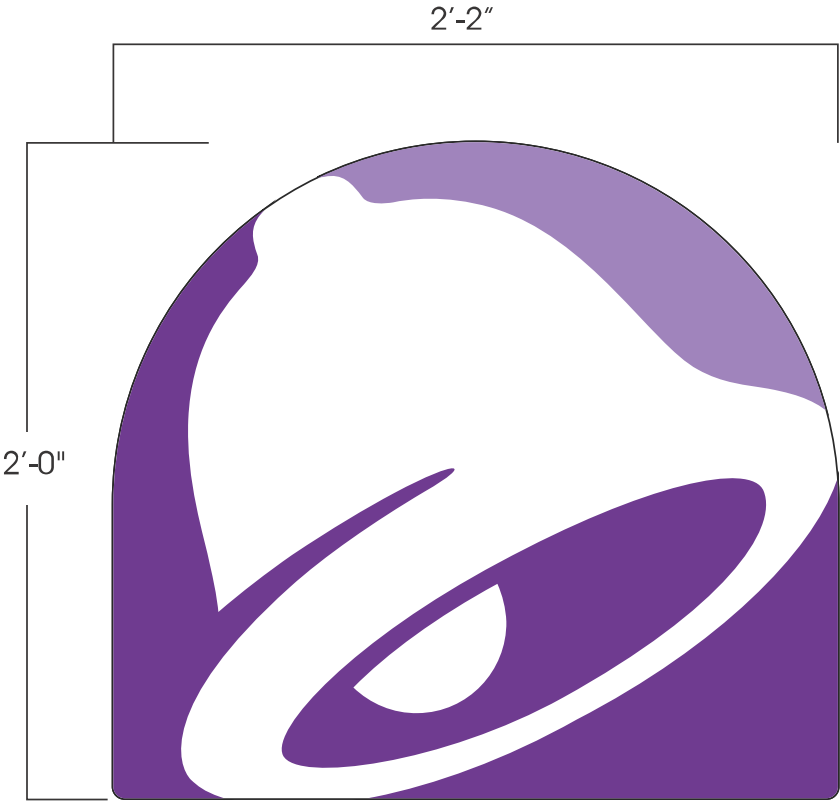
THIS SIGN IS INTENDED TO BE INSTALLED IN ACCORDANCE WITH THE REQUIREMENTS OF ARTICLE 600 OF THE NATIONAL ELECTRIC CODE AND/OR OTHER APPLICABLE LOCAL CODES. THIS INCLUDES PROPER GROUNDING AND BONDING OF THE SIGN.

INSTALLER TO VERIFY SIGN IS PROPERLY INSTALLED, CONNECTED AND GROUNDING.

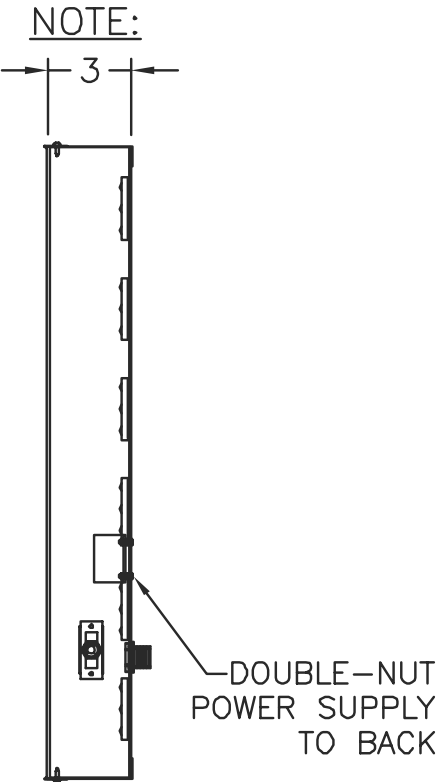
THIS DRAWING IS FOR INSTALLATION PURPOSES ONLY AND NOT TO BE USED FOR MANUFACTURING.

INSTALLATION INSTRUCTIONS

1. OPEN PACKAGING CAREFULLY AND INSPECT FOR DAMAGE. IF DAMAGE IS FOUND, CLAIM MUST BE FILED WITHIN 5-DAYS WITH SHIPPING AGENT.
2. DETERMINE SIGN LOCATION AND TAPE UP THE TEMPLATE (IF PROVIDED) ON THE SURFACE TO WHICH IT WILL BE INSTALLED, RECEIVE CONFIRMATION FROM CLIENT OR CONTRACTOR.
3. LAYOUT AND PRE-DRILL ALL MOUNTING AND ELECTRICAL HOLES REQUIRED FOR MOUNTING THE LETTERS TO THE WALL.
4. FILL ALL HOLES WITH SILICONE PRIOR TO MOUNTING THE SIGN.
5. ALIGN LETTERS TO MATCHING PRE-DRILLED HOLES WHILE INSERTING FASTENERS THROUGH LETTERS, WALL AND BLOCKING (AS REQ'D). FASTEN WITH HARDWARE. USE PVC SLEEVES TO PROTECT BUILDING FINISH SYSTEM OVER SHEATHING (IF REQ'D).
6. MAKE FINAL ELECTRICAL HOOK UP TO PRIMARY WIRING OF POWER SUPPLIES THROUGH DRILLED ELECTRICAL HOLES.
7. TEST LIGHT FOR PROPER FUNCTION AND ILLUMINATION.
8. PERFORM TOUCH-UP AS REQUIRED
9. CLEAN INSTALLATION WORK SITE OF ALL EXCESS MATERIALS AND DEBRIS. DO NOT DISCARD ANY MATERIAL OR DEBRIS INTO ON SITE DUMPSTERS.



Sign Area: 4.33 Sq. Ft. (Squared)



GENERAL SPECIFICATIONS:

3" aluminum returns & trim cap w/ black finish
.177 White Polycarbonate face w/ vinyl applied to first surface

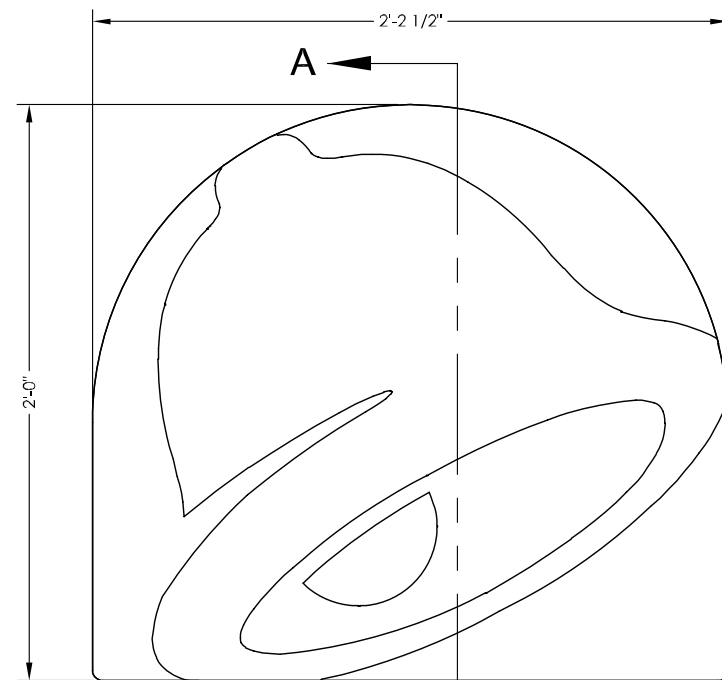
ELECTRICAL SPECIFICATIONS:

- LED: LS-PRO160-50K-2B1
- Power Supply: One (1) 60 watt
- .09amps @ 100-277 VAC
- One (1) 20 amp circuit

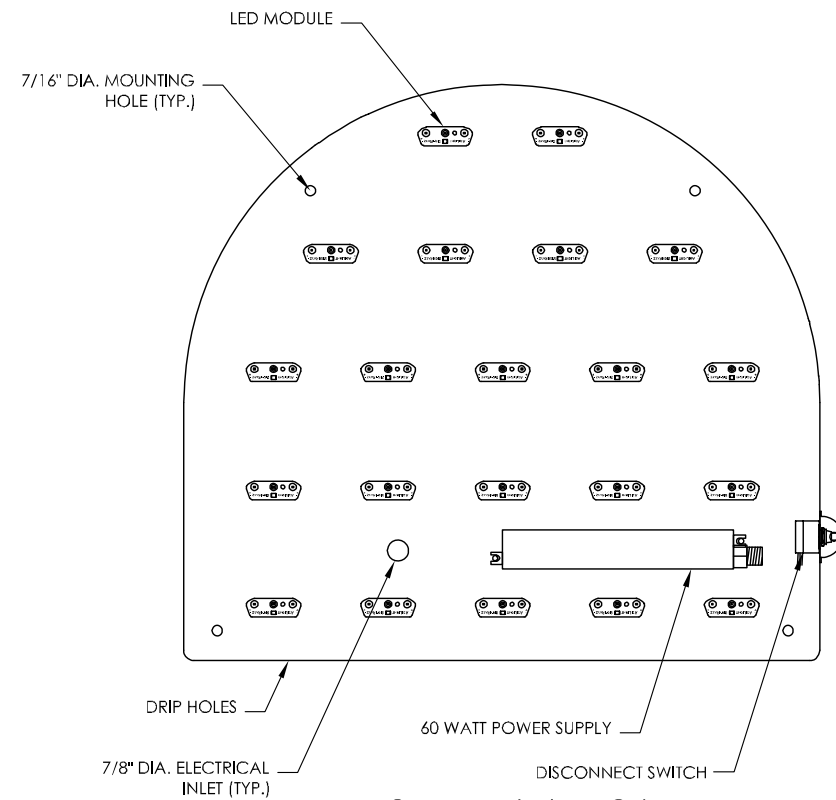
COLORS:

Dark Purple: 3630-9327; PMS 2603
Light Purple: 3630-9141; PMS 2577
Black
White

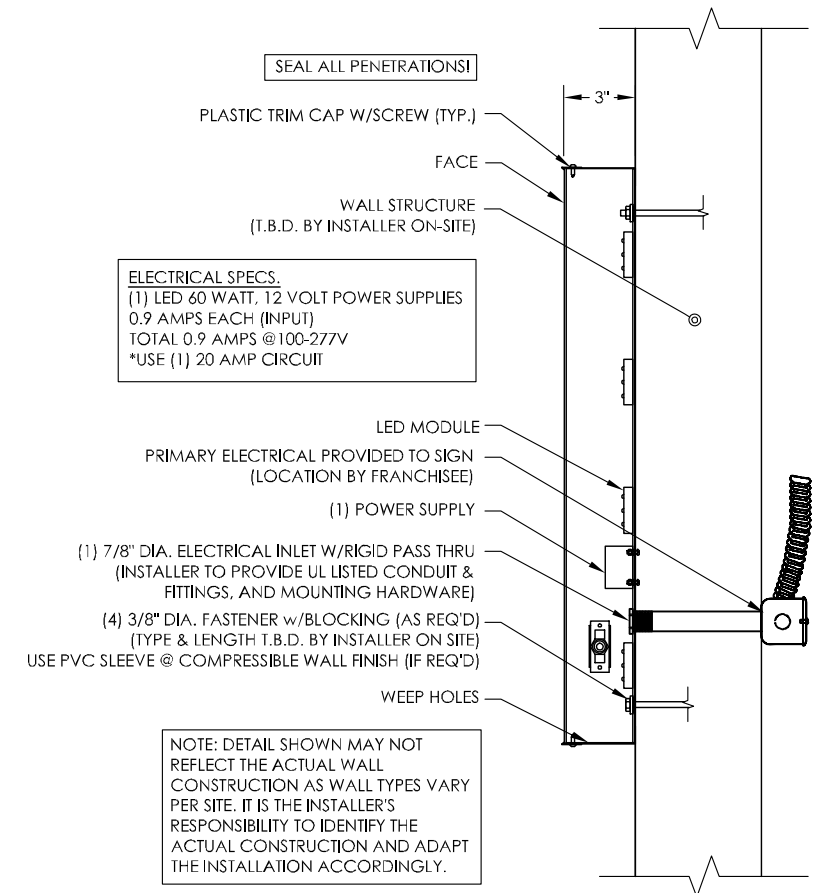
These product sheets are the exclusive property of Everbrite LLC. Use of this property in any manner without express written permission of Everbrite LLC is prohibited. Drawings are for graphic purposes only and not intended for actual construction. For more specific manufacturing detail, please refer to engineering specifications and install drawings.



FRONT VIEW (w/FACE)
SCALE 1:8



FRONT VIEW (w/o FACE)
SCALE 1:8



SECTION "A-A"
SCALE 1:8

GENERAL NOTES

INSTALLER TO PROVIDE COMPLETION PHOTOS OF MOUNTING/CONNECTION POINTS, WIRE ROUTING AND OVERALL ELEVATION.

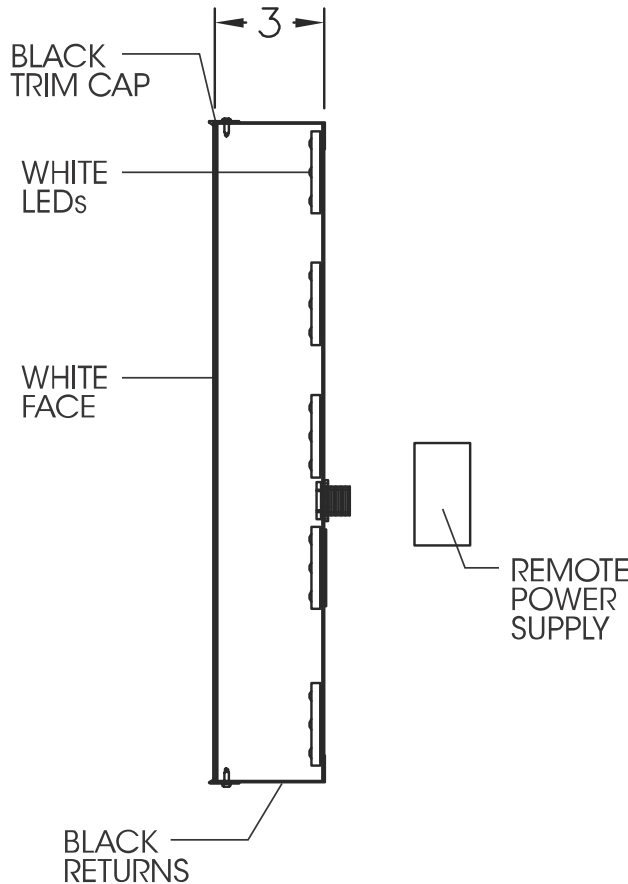
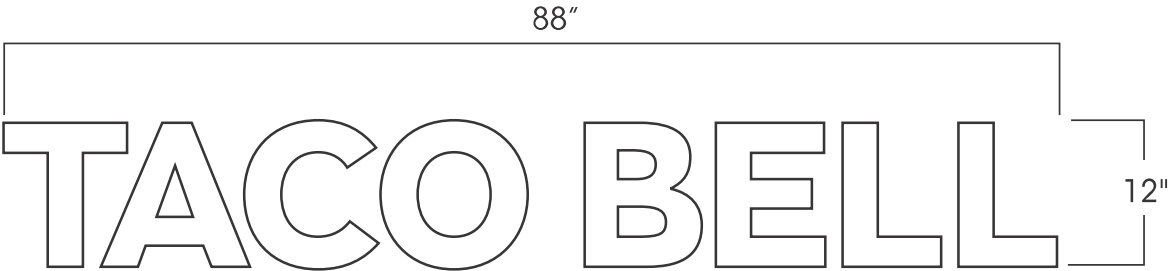
THIS SIGN IS INTENDED TO BE INSTALLED IN ACCORDANCE WITH THE REQUIREMENTS OF ARTICLE 600 OF THE NATIONAL ELECTRIC CODE AND/OR OTHER APPLICABLE LOCAL CODES. THIS INCLUDES PROPER GROUNDING AND BONDING OF THE SIGN.

INSTALLER TO VERIFY SIGN IS PROPERLY INSTALLED, CONNECTED AND GROUNDED.

THIS DRAWING IS FOR INSTALLATION PURPOSES ONLY AND NOT TO BE USED FOR MANUFACTURING.

INSTALLATION INSTRUCTIONS

1. OPEN PACKAGING CAREFULLY AND INSPECT FOR DAMAGE. IF DAMAGE IS FOUND, CLAIM MUST BE FILED WITHIN 5-DAYS WITH SHIPPING AGENT.
2. DETERMINE SIGN LOCATION AND TAPE UP THE PROVIDED TEMPLATE ON THE SURFACE TO WHICH IT WILL BE INSTALLED. RECEIVE CONFIRMATION FROM CLIENT OR CONTRACTOR.
3. LAYOUT AND PRE-DRILL ALL REQUIRED MOUNTING AND ELECTRICAL HOLES.
4. FILL ALL HOLES WITH SILICONE PRIOR TO MOUNTING THE SIGN.
5. ALIGN LETTERS TO MATCHING PRE-DRILLED HOLES WHILE INSERTING FASTENERS THROUGH LETTERS, WALL AND BLOCKING (AS REQ'D). FASTEN WITH HARDWARE. USE PVC SLEEVES TO PROTECT WALL FINISH OVER SHEATHING (IF NECESSARY).
6. MAKE FINAL ELECTRICAL HOOK UP TO PRIMARY WIRING OF POWER SUPPLIES THROUGH DRILLED ELECTRICAL HOLES.
7. TEST LIGHT FOR PROPER FUNCTION AND ILLUMINATION.
8. PERFORM TOUCH-UP AS REQUIRED
9. CLEAN INSTALLATION WORK SITE OF ALL EXCESS MATERIALS AND DEBRIS. DO NOT DISCARD ANY MATERIAL OR DEBRIS INTO ON SITE DUMPSTERS.



GENERAL SPECIFICATIONS:

- 3" Deep fabricated aluminum cabinet, black
- .118 #7328 White acrylic faces w/ 3/4" black trim cap
- Internally illuminated with white LEDs
- Sign Area (Squared): 7.33

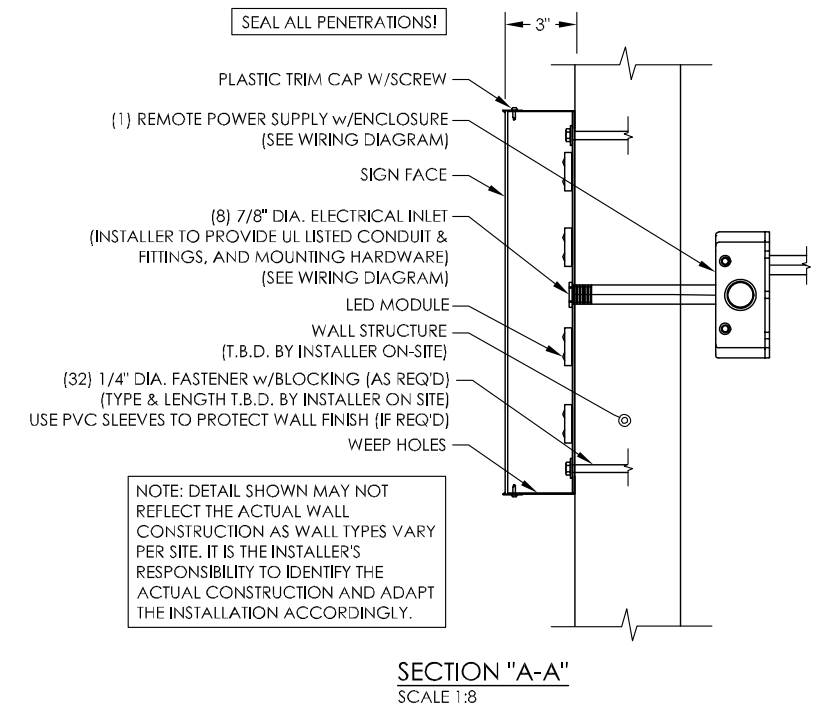
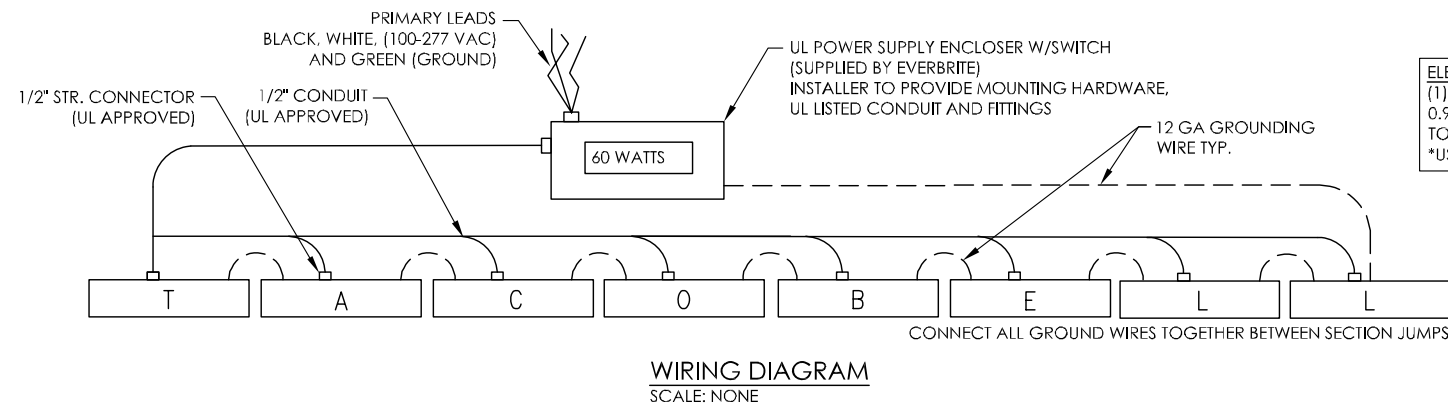
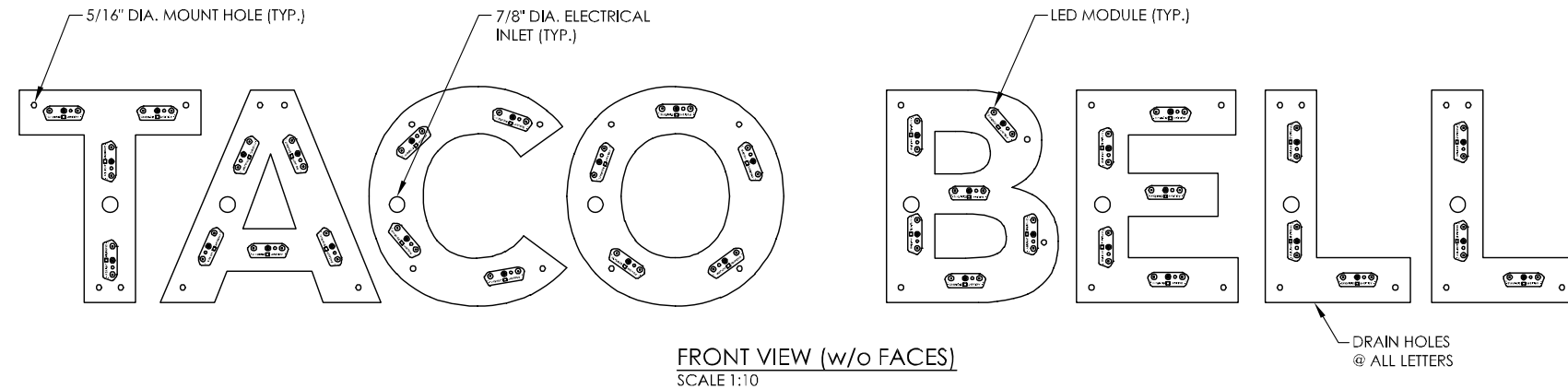
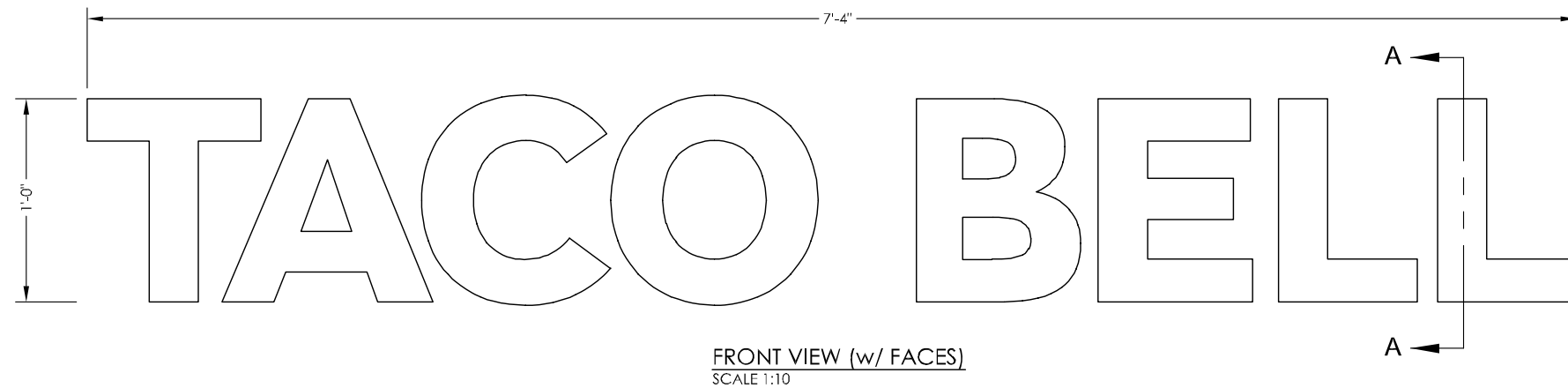
ELECTRICAL SPECIFICATIONS:

- White LEDs
- Power Supply: One (1) 60 watt
.90amps @ 100-277 V
- One (1) 20 amp circuit, 60HZ UL 48 & NEC compliant

COLOR SPECIFICATIONS:

Black
White

These product sheets are the exclusive property of Everbrite LLC. Use of this property in any manner without express written permission of Everbrite LLC is prohibited. Drawings are for graphic purposes only and not intended for actual construction. For more specific manufacturing detail, please refer to engineering specifications and install drawings.

**GENERAL NOTES**

INSTALLER TO PROVIDE COMPLETION PHOTOS OF MOUNTING/CONNECTION POINTS, WIRE ROUTING AND OVERALL ELEVATION.

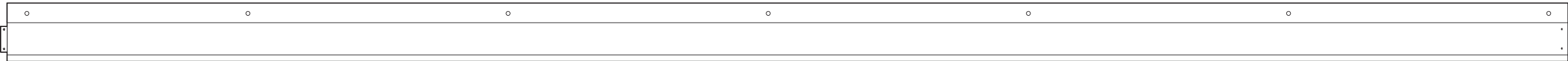
THIS SIGN IS INTENDED TO BE INSTALLED IN ACCORDANCE WITH THE REQUIREMENTS OF ARTICLE 600 OF THE NATIONAL ELECTRIC CODE AND/OR OTHER APPLICABLE LOCAL CODES. THIS INCLUDES PROPER GROUNDING AND BONDING OF THE SIGN.

INSTALLER TO VERIFY SIGN IS PROPERLY INSTALLED, CONNECTED AND GROUNDED.

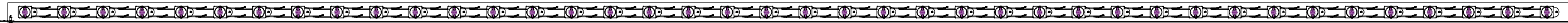
THIS DRAWING IS FOR INSTALLATION PURPOSES ONLY AND NOT TO BE USED FOR MANUFACTURING.

INSTALLATION INSTRUCTIONS

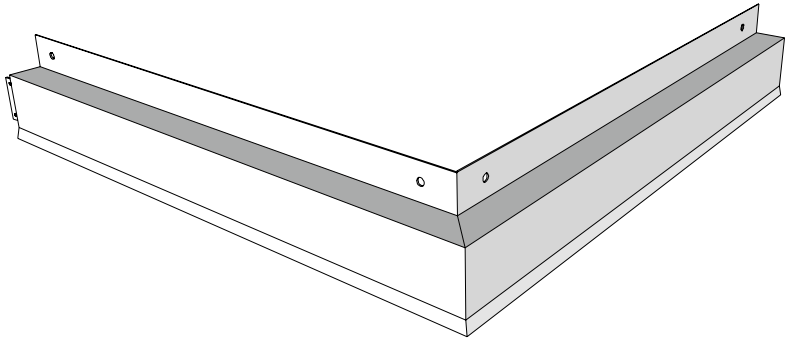
1. OPEN PACKAGING CAREFULLY AND INSPECT FOR DAMAGE. IF DAMAGE IS FOUND, CLAIM MUST BE FILED WITHIN 5-DAYS WITH SHIPPING AGENT.
2. DETERMINE SIGN LOCATION AND TAPE UP THE PROVIDED TEMPLATE ON THE SURFACE TO WHICH IT WILL BE INSTALLED. RECEIVE CONFIRMATION FROM CLIENT OR CONTRACTOR.
3. LAYOUT AND PRE-DRILL ALL REQUIRED MOUNTING AND ELECTRICAL HOLES.
4. FILL ALL HOLES WITH SILICONE PRIOR TO MOUNTING THE SIGN.
5. ALIGN EACH LETTER TO MATCHING PRE-DRILLED HOLES WHILE INSERTING FASTENERS THROUGH LETTER, WALL AND BLOCKING (AS REQ'D). FASTEN WITH HARDWARE. USE PVC SLEEVES TO PROTECT BUILDING FINISH SYSTEM OVER SHEATHING (IF REQ'D).
6. MAKE FINAL ELECTRICAL HOOK UP TO PRIMARY WIRING OF POWER SUPPLIES THROUGH DRILLED ELECTRICAL HOLES.
7. TEST LIGHT FOR PROPER FUNCTION AND ILLUMINATION.
8. PERFORM TOUCH-UP AS REQUIRED.
9. CLEAN INSTALLATION WORK SITE OF ALL EXCESS MATERIALS AND DEBRIS. DO NOT DISCARD ANY MATERIAL OR DEBRIS INTO ON SITE DUMPSTERS.



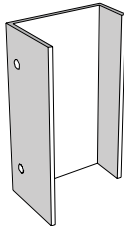
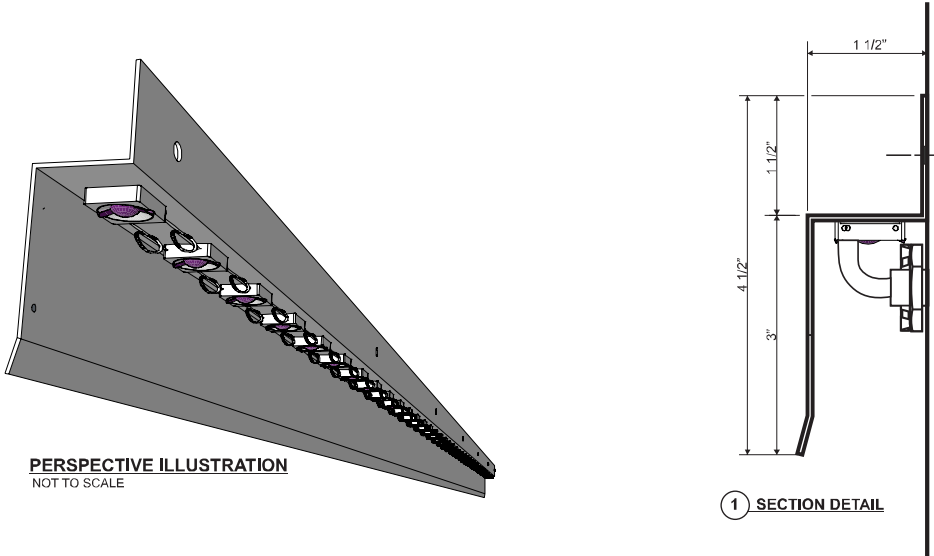
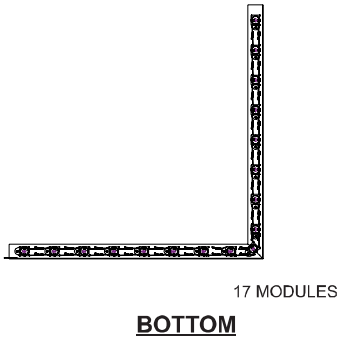
PURPLE WALL WASH -10'-0" FIXTURE PRODUCT - B



BOTTOM 39 MODULES

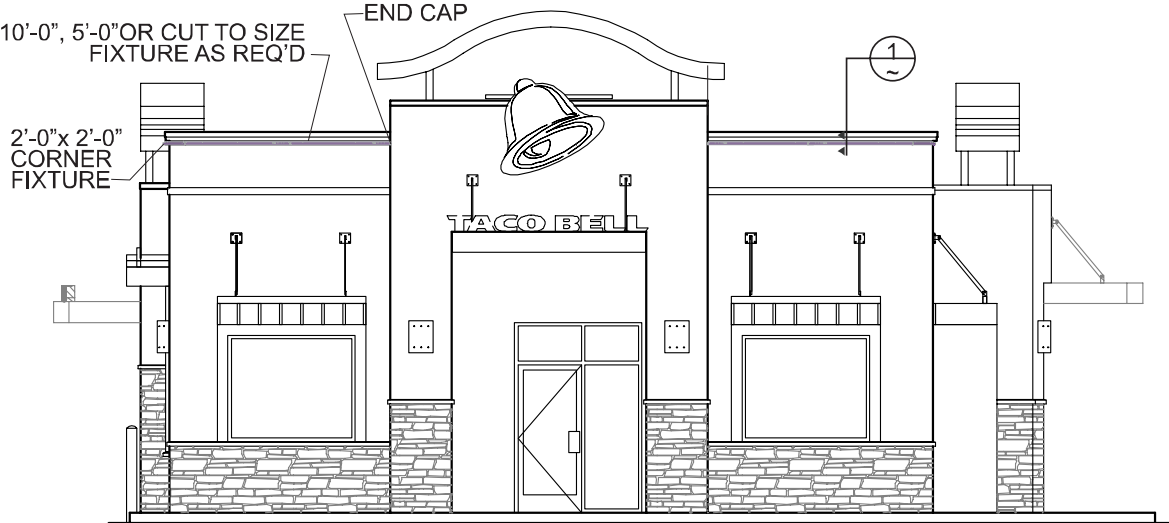


**PURPLE WALL WASH - 2'-0" x 2'-0" CORNER FIXTURE
PRODUCT - C**



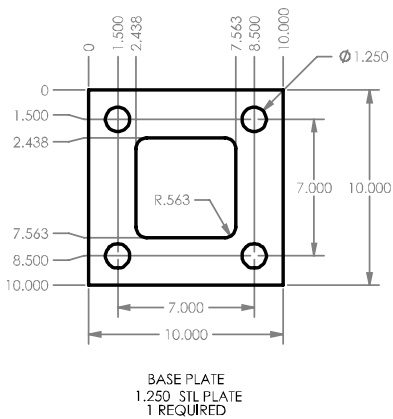
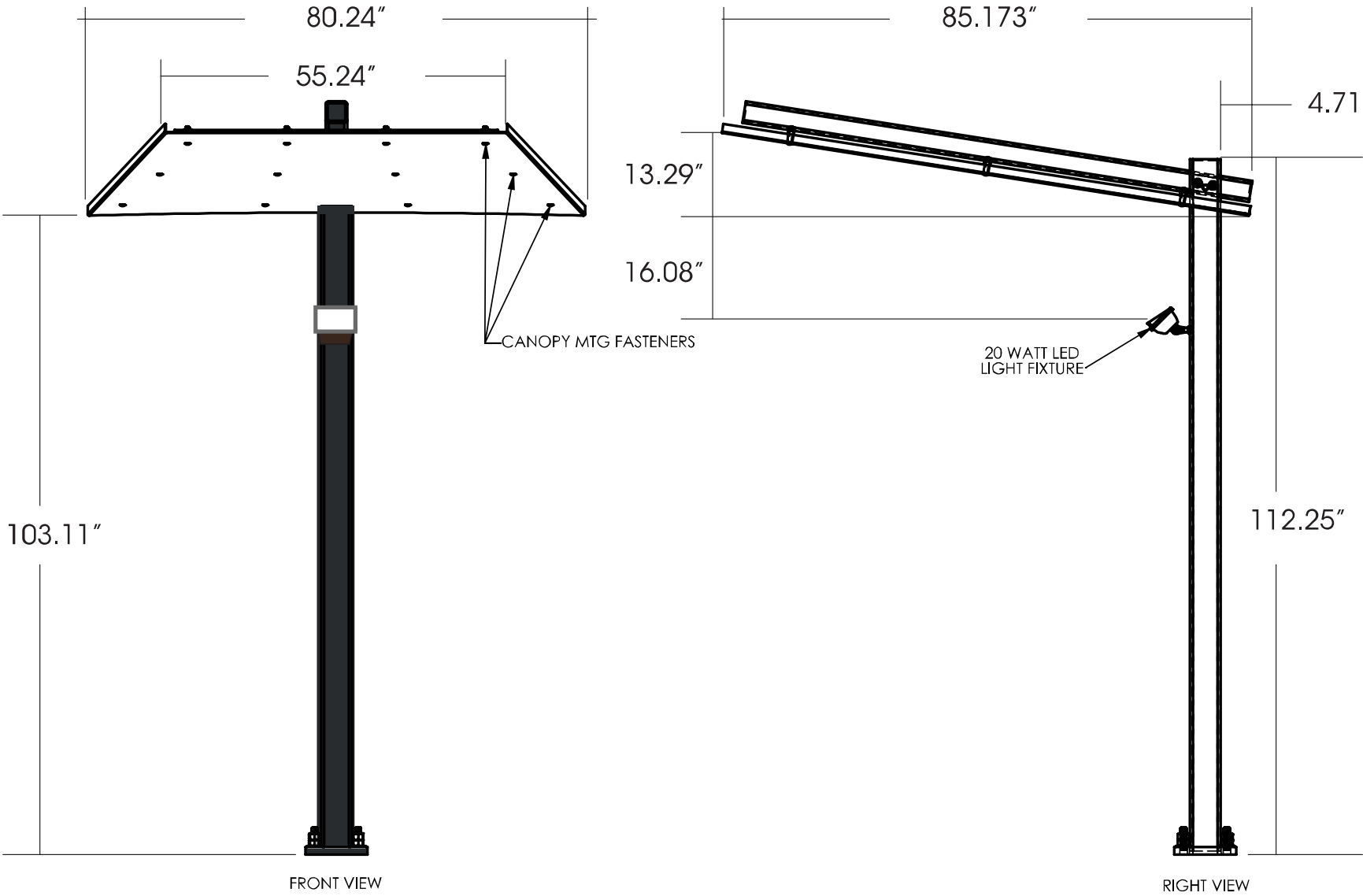
**FIELD INSTALLED
END CAP**

PRODUCT - D



TYPICAL FRONT ELEVATION





ELECTRICAL SPECIFICATIONS

UL & NEC approval required.
Lamp(s): 5.5" hx6" w flood light - 20W LED (4100K), 1400 lumens
Circuits(s): (1) 20 amp-120V

COLOR SPECIFICATIONS

RAL9011 Graphite Black



Everbrite, LLC - 4949 South 110th Street - Greenfield, WI 53228 - www.everbrite.com

Customer/Site No: 40434

Address: BELVIDERE ROAD LAKEMOOR, IL 60050

Description: TACO BELL

Prepared By: Christopher Koob

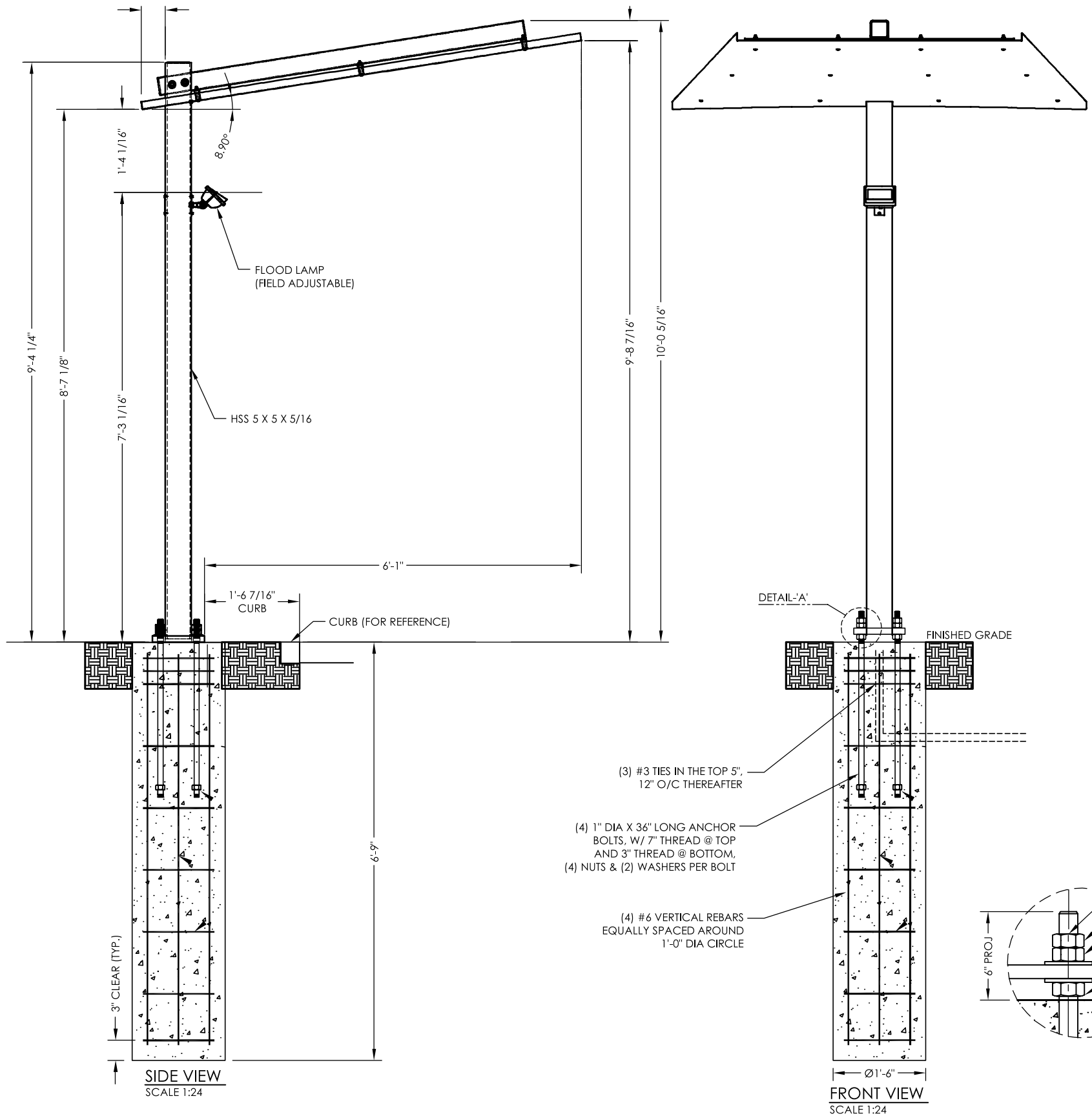
Date: 03/25/2022

PIF: 466740-0

Customer Signature:



These drawings and designs are the exclusive property of Everbrite, LLC. Use or duplication in any manner, without express written permission of Everbrite, LLC, is prohibited.



GENERAL NOTES
INSTALLER TO PROVIDE COMPLETION PHOTOS OF FOUNDATION, GROUT INSTALLATION, BASE PLATES, ANCHOR BOLTS, MATCH PLATE, WELDING CONNECTIONS AND OVERALL ELEVATION.

THIS SIGN IS INTENDED TO BE INSTALLED IN ACCORDANCE WITH THE REQUIREMENTS OF ARTICLE 600 OF THE NATIONAL ELECTRIC CODE AND/OR OTHER APPLICABLE LOCAL CODES. THIS INCLUDES PROPER GROUNDING AND BONDING OF THE SIGN.

INSTALLER TO BE SURE CANOPY ARE PROPERLY INSTALLED, CONNECTED AND GROUNDED.

LANDSCAPING MATERIALS SHOULD BE KEPT TO A MINIMUM OF TWO INCHES AWAY FROM SIGN POLES OR BASE PLATES.

THIS DRAWING IS FOR INSTALLATION PURPOSES ONLY AND NOT TO BE USED FOR MANUFACTURING.

CONCRETE SPECIFICATION
THE REQUIRED 0.45 CU. YDS. OF FOUNDATION CONCRETE SHALL HAVE A MIN. COMPRESSIVE STRENGTH OF 3,000 PSI @ 28 DAYS. REINFORCING STEEL SHALL HAVE A MIN. YIELD STRENGTH OF 60,000 PSI. RECOMMENDED MIN. CURE TIME OF 7 DAYS BEFORE PROCEEDING WITH INSTALLATION.

LIFTING HOLE NOTE
ANY LIFTING HOLES CREATED ARE THE RESPONSIBILITY OF THE INSTALLER. LIFTING HOLES ARE TO BE SEALED BY A CAP PLATE, WELDED OVER TO COVER AND THEN PAINTED.

WELDING NOTE
ANY REQUIRED WELDING IS TO BE COMPLETED BY AN AWS CERTIFIED WELDER QUALIFIED IN THE APPLICABLE POSITIONS NEEDED.

DESIGN NOTE
SIGN, POLE, AND CONCRETE FOUNDATION ARE DESIGNED TO WITHSTAND A WIND LOAD OF 35 PSF & A SNOW LOAD OF 35 PSF

CONCRETE BASE DESIGNED USING A LATERAL SOIL BEARING CAPACITY OF 150 PSF / FT. OF DEPTH. IF THESE SOIL CONDITIONS DO NOT EXIST AT THE FOUNDATION LOCATION, IT IS THE ERECTOR'S RESPONSIBILITY TO NOTIFY EVERBRITE, LLC PRIOR TO PERFORMING ADDITIONAL EXCAVATION OR ANY CONCRETE PLACEMENT.

INSTALLATION INSTRUCTIONS

1. STAKE FOUNDATION AREA AND CONFIRM FINAL GRADE REQUIREMENTS WITH G. C.
2. EXCAVATE FOUNDATION AREA.
3. SET CONDUIT STUB, ANCHOR BOLTS AND REBAR.
4. POUR CONCRETE. ALLOW CONCRETE CURE TIME AS REQUIRED (A MINIMUM OF 7 DAYS IS SUGGESTED BEFORE CONTINUING WITH INSTALLATION).
5. SET COLUMN PLUMB AND ANCHOR AS SHOWN IN A.B. DETAIL.
6. MOUNT CANOPY TO POLE.
7. MAKE FINAL ELECTRICAL HOOK UP (ALL ELECTRICAL TO MEET LOCAL CODES.)
8. TEST SIGN FOR PROPER FUNCTION.
9. REMOVE ANY LIFTING BRACKETS AND REINSTALL BOLTS.
10. CLEAN UP AREA AND REMOVE ANY PACKING MATERIAL.

EVERBRITE TO FURNISH

1. 6'-0" X 5'-0" CANOPY
2. ANCHOR BOLTS AND NUTS
3. ALL MOUNTING HARDWARE

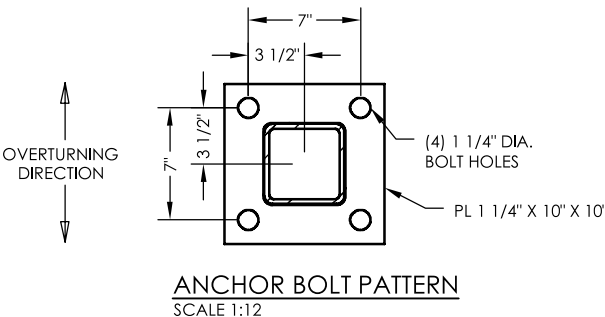
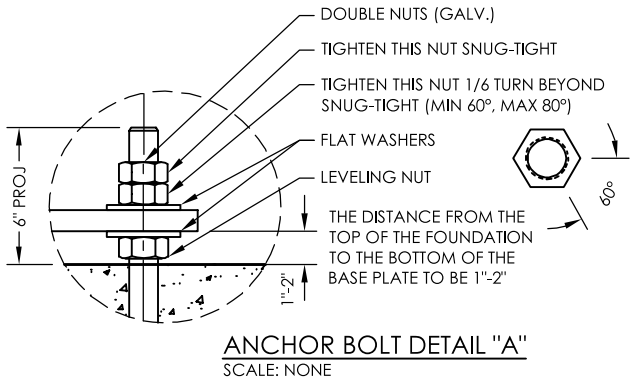
INSTALLER TO FURNISH

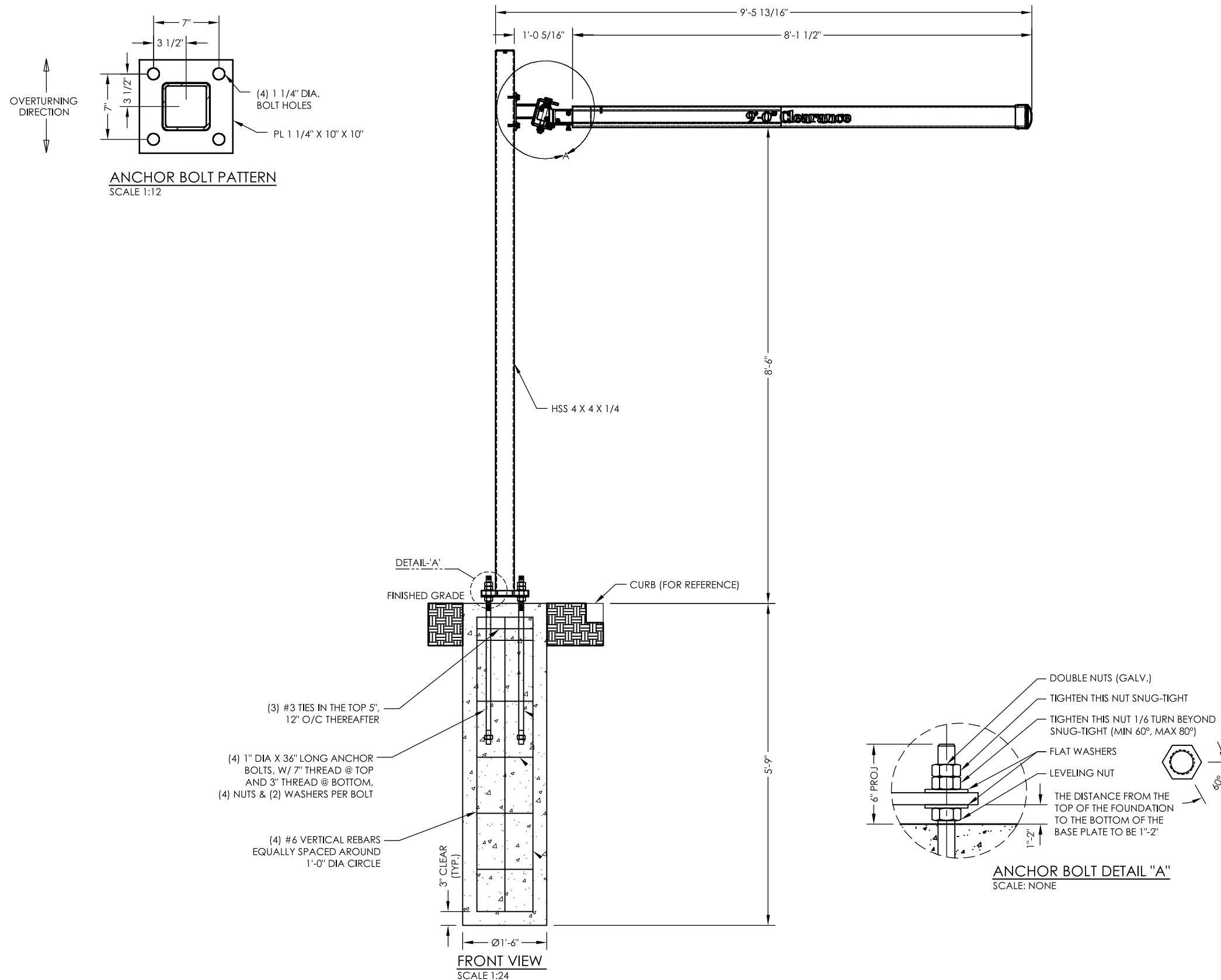
1. ALL ELECTRICAL COMPONENTS REQUIRED

2. FOUNDATION

ELECTRICAL SPECS:
(1) 15 WATT LED FIXTURE 1500 LUMENS 4000K
0.125 - 0.034 -AMPS @ 120/277 VAC - 50/60 HZ

CANOPY EST. WEIGHT:
372 POUNDS



**GENERAL NOTES**

INSTALLER TO PROVIDE COMPLETION PHOTOS OF FOUNDATION, BASE PLATES, ANCHOR BOLTS, MATCH PLATE, WELDING CONNECTIONS AND OVERALL ELEVATION.

INSTALLER TO BE SURE PORTAL IS PROPERLY INSTALLED.

THIS DRAWING IS FOR INSTALLATION PURPOSES ONLY AND NOT TO BE USED FOR MANUFACTURING.

LANDSCAPING MATERIALS SHOULD BE KEPT TO A MINIMUM OF TWO INCHES AWAY FROM SIGN POLES OR BASE PLATES.

CONCRETE SPECIFICATION

THE REQUIRED 0.38 CU. YDS. OF FOUNDATION CONCRETE SHALL HAVE A MIN. COMPRESSIVE STRENGTH OF 3,000 PSI @ 28 DAYS. REINFORCING STEEL SHALL HAVE A MIN. YIELD STRENGTH OF 60,000 PSI. RECOMMENDED MIN. CURE TIME OF 7 DAYS BEFORE PROCEEDING WITH INSTALLATION.

LIFTING HOLE NOTE

ANY LIFTING HOLES CREATED ARE THE RESPONSIBILITY OF THE INSTALLER. LIFTING HOLES ARE TO BE SEALED BY A CAP PLATE, WELDED OVER TO COVER AND THEN PAINTED.

WELDING NOTE

ANY REQUIRED WELDING IS TO BE COMPLETED BY AN AWS CERTIFIED WELDER QUALIFIED IN THE APPLICABLE POSITIONS NEEDED.

DESIGN NOTE

PORTAL POLE, AND CONCRETE FOUNDATION ARE DESIGNED TO WITHSTAND A WIND LOAD OF 29 PSF

CONCRETE BASE DESIGNED USING A LATERAL SOIL BEARING CAPACITY OF 150 PSF / FT. OF DEPTH. IF THESE SOIL CONDITIONS DO NOT EXIST AT THE FOUNDATION LOCATION, IT IS THE ERECTOR'S RESPONSIBILITY TO NOTIFY EVERBRITE, LLC PRIOR TO PERFORMING ADDITIONAL EXCAVATION OR ANY CONCRETE PLACEMENT.

INSTALLATION INSTRUCTIONS

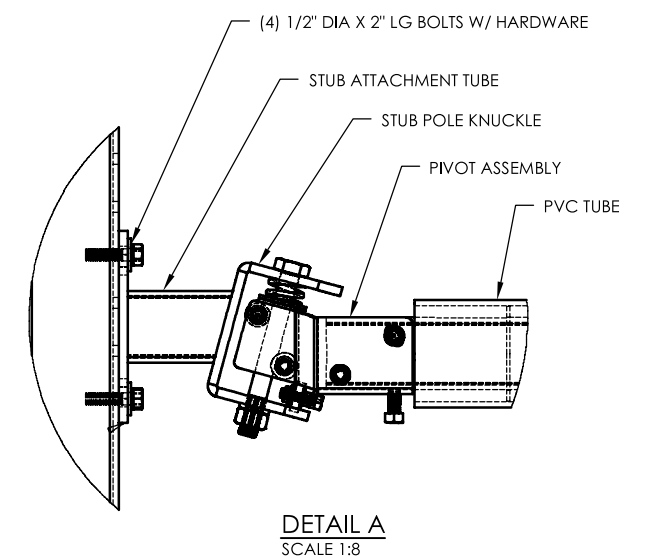
1. STAKE FOUNDATION AREA AND CONFIRM FINAL GRADE REQUIREMENTS WITH G. C.
2. EXCAVATE FOUNDATION AREA.
4. SET CONDUIT STUB, ANCHOR BOLTS AND REBAR.
5. POUR CONCRETE. ALLOW CONCRETE CURE TIME AS REQUIRED (A MINIMUM OF 7 DAYS IS SUGGESTED BEFORE CONTINUING WITH INSTALLATION).
5. SET COLUMN PLUMB AND ANCHOR AS SHOWN IN A.B. DETAIL.
6. MOUNT CLEARANCE BAR TO POLE.
7. REMOVE ANY LIFTING BRACKETS AND REINSTALL BOLTS.
8. CLEAN UP AREA AND REMOVE ANY PACKING MATERIAL.

EVERBRITE TO FURNISH

1. CLEARANCE BAR W/ POLE
2. ANCHOR BOLTS AND NUTS
3. ALL MOUNTING HARDWARE

INSTALLER TO FURNISH

1. FOUNDATION



GENERAL SPECIFICATIONS:

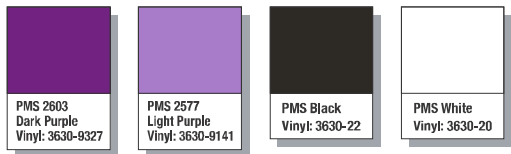
- 10" deep extruded aluminum cabinet & retainers w/ Satin Black finish
- Pan flat faces
- Internally illuminated w/ white LEDs
- Fabricated aluminum shroud w/ Satin Black finish

COLORS:

- Logo PMS Colors:

 - Dark Purple 2603C
 - Light Purple 2577C
 - Pantone Black
 - Pantone White
- Logo 3M Vinyl Colors:

 - Dark Purple 3630-9327
 - Light Purple 3630-9141
 - Black 3630-22
 - White 3630-20



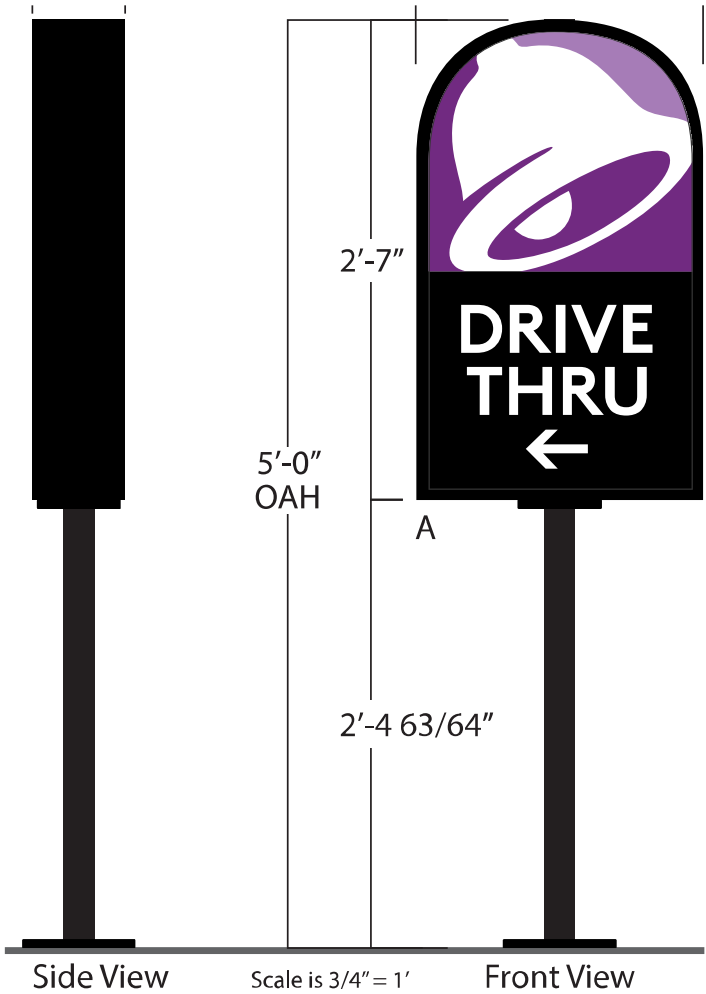
TYPE FACE:

- Frutiger 77 Black Condensed
- BrownSTD Bold for appendage

SIGN AREA:

Actual: 52 Sq. Ft.





A



B



C



D



E



F



G



H



I



J



K



L



M

E036022
GENERAL SPECIFICATIONS:

- CABINET: 6" Deep extruded aluminum cabinet and retainer with Black finish
- FACE MATERIAL: .187 Clear Flat Solar Grade Polycarbonate
- SIGN AREA: 3.9 Sq. Ft.
- WIND LOAD: 110 MPH, wind speed 3-Second Gust-Exposure C

COLORS:

- Dark Purple 3M Vinyl 3630-9327
- Light Purple 3M Vinyl 3630-9141
- Pantone Black 3M Vinyl
- White 3M Vinyl 3630-20
- Second Surface application

TYPE FACE:

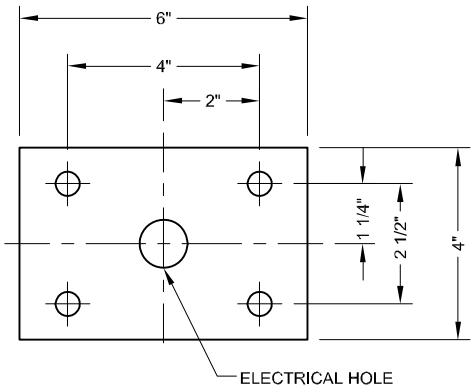
- BrownSTD Bold for appendage

ELECTRICAL SPECIFICATIONS:

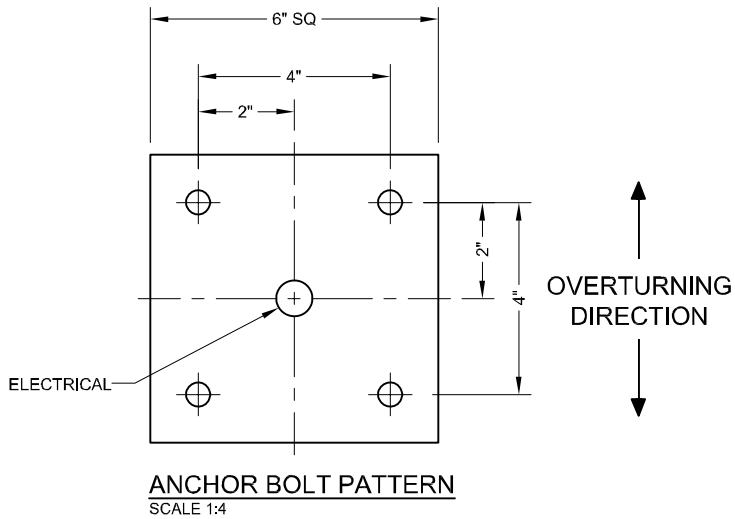
- Internally illuminated w/white LED, Pro160-50K
- (1) Power Supply
- (0.9) AMPS @ 120VAC
- (1) 20 AMP Circuit, 60 Hz UL 48 & NEC Compliant

These product sheets are the exclusive property of Everbrite LLC. Use of this property in any manner without express written permission of Everbrite LLC is prohibited. Drawings are for graphic purposes only and not intended for actual construction. For more specific manufacturing detail, please refer to engineering specifications and install drawings.

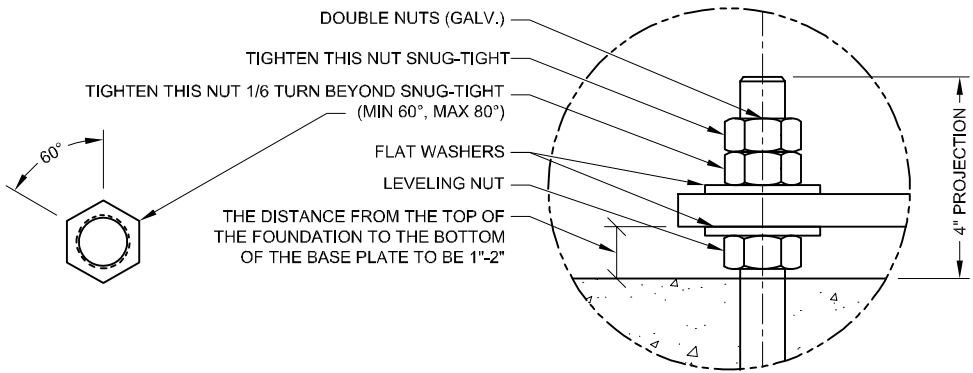




SIGN MTG. PATTERN
SCALE 1:4



ANCHOR BOLT PATTERN
SCALE 1:4



ANCHOR BOLT DETAIL-'A'
SCALE: NONE

EVERBRITE TO FURNISH

1. 2'-7 1/2" X 1'-7 5/16" SIGN WITH POLE
2. ANCHOR BOLTS AND NUTS
3. (4) ALL MOUNTING HARDWARE
4. TOUCH-UP PAINT

INSTALLER TO FURNISH

1. ALL ELECTRICAL COMPONENTS REQUIRED
2. FOUNDATION

GENERAL CONTRACTOR TO FURNISH

1. PRIMARY WIRES FROM BUILDING TO SIGN

ELECTRICAL SPECIFICATION :

LEDS: (34) ULTRA 12V 650-50K-B-200-A

POWER SUPPLY: (1) 35W

(0.4) AMPS @120VAC

(1) 20 AMP CIRCUIT, 60 Hz UL 48 & NEC COMPLIANT

ARE OF SIGN: 4 SQ.FT

INSTALLER TO PROVIDE COMPLETION PHOTOS OF THE FOLLOWING

1. MATCH PLATE/SIGN CONNECTIONS
2. BEFORE AND AFTER PHOTOS OF ALL PLUG WELDS, CAP PLATE WELDS, AND ANY OTHER WELDED CONNECTIONS DONE IN THE FIELD
3. ELECTRICAL WIRING
4. ALL SIGN ILLUMINATING (PREFERABLY SHOWING LED'S OR LAMPS ILLUMINATING)
5. ANY WALL PENETRATION CAULKED AND SEALED
6. OVERALL ELEVATION

GENERAL NOTES

THIS SIGN IS INTENDED TO BE INSTALLED IN ACCORDANCE WITH THE REQUIREMENTS OF ARTICLE 600 OF THE NATIONAL ELECTRIC CODE AND/OR OTHER APPLICABLE LOCAL CODES. THIS INCLUDES PROPER GROUNDING AND BONDING OF THE SIGN AND INSTALLING DISCONNECT SWITCHES IF NOT FACTORY INSTALLED ON THE SIGN.

SIGN ASSEMBLY IS INTENDED FOR OUTDOOR WET LOCATION.

INSTALLER TO BE SURE SIGNS ARE PROPERLY INSTALLED, CONNECTED AND GROUNDED.

LANDSCAPING MATERIALS SHOULD BE KEPT MINIMUM TWO INCHES AWAY FROM SIGN POLES OR BASE PLATES.

THIS DRAWING IS FOR INSTALLATION PURPOSES ONLY AND NOT TO BE USED FOR MANUFACTURING.

CONCRETE SPECIFICATION

0.09 CU. YDS. TOTAL. CONCRETE SHALL HAVE A MIN. COMPRESSIVE STRENGTH OF 3,000 PSI @ 28 DAYS. REINFORCING STEEL SHALL HAVE A MIN. YIELD STRENGTH OF 60,000 PSI. RECOMMENDED MIN. CURE TIME OF 7 DAYS BEFORE PROCEEDING WITH INSTALLATION.

LIFTING HOLE NOTE

ANY LIFTING HOLES CREATED ARE THE RESPONSIBILITY OF THE INSTALLER. LIFTING HOLES ARE TO BE SEALED BY A CAP PLATE, WELDED OVER TO COVER AND THEN PAINTED.

WELDING NOTE

ANY REQUIRED WELDING IS TO BE COMPLETED BY AN AWS CERTIFIED WELDER QUALIFIED IN THE APPLICABLE POSITIONS NEEDED. PROOF OF WELDER CERTIFICATION REQUIRED (COPY OF WELDER CERTIFICATION, PHOTO OF AWS CERTIFICATION CARD OF PERSON DOING THE WELDING).

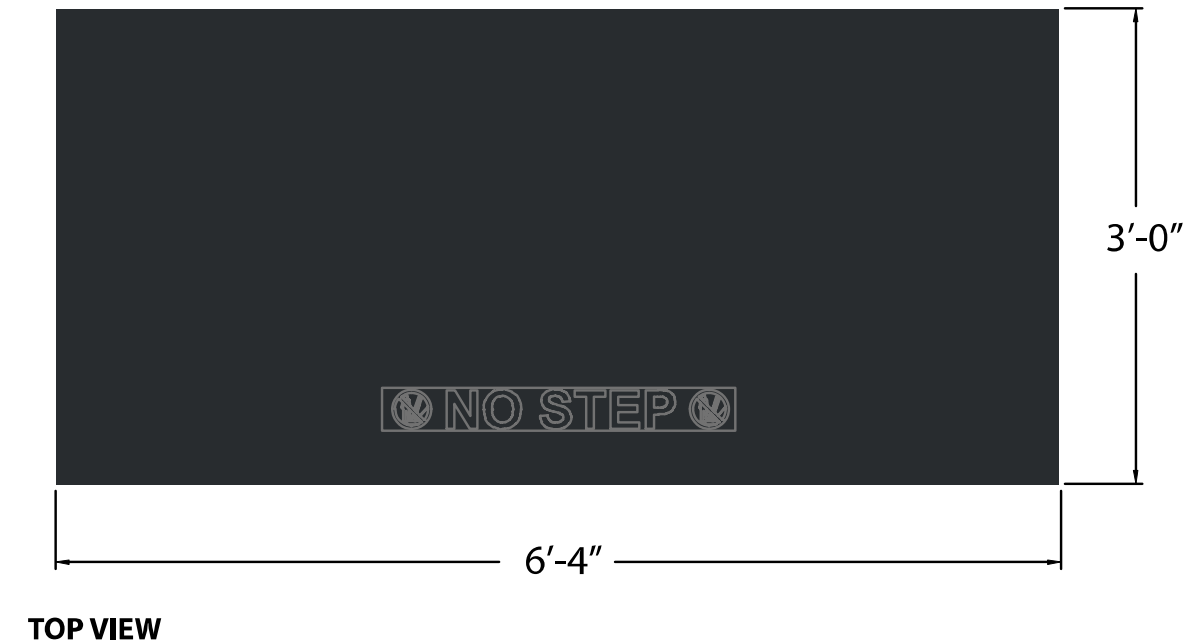
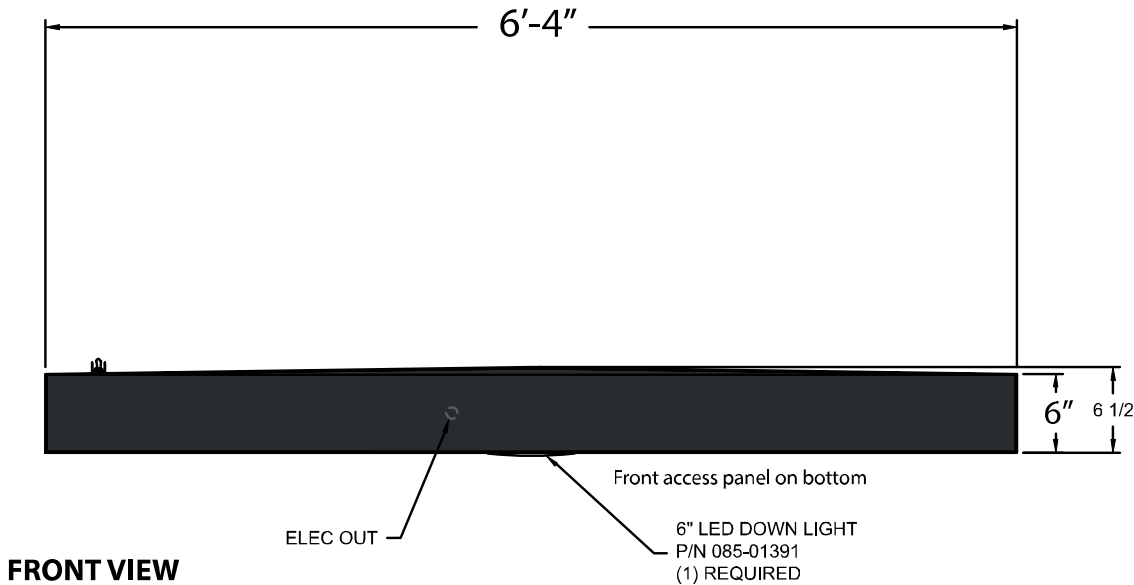
DESIGN NOTE

SIGN, POLE AND CONCRETE FOUNDATION ARE DESIGNED TO WITHSTAND AN ALLOWABLE WIND LOAD OF 35 PSF.

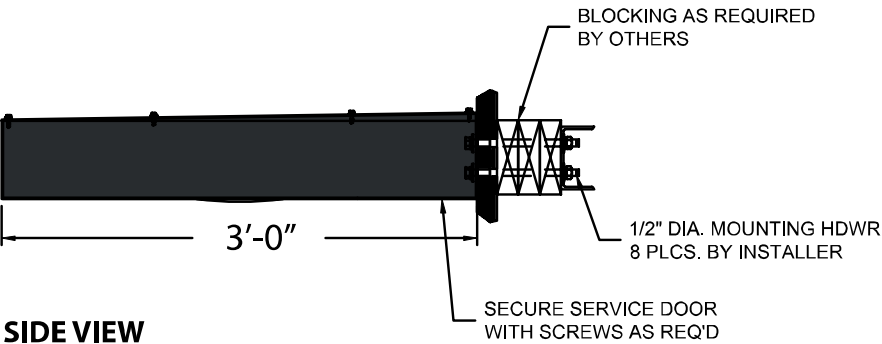
CONCRETE BASE DESIGNED USING A LATERAL SOIL BEARING CAPACITY OF 150 PSF / FT. OF DEPTH. IF THESE SOIL CONDITIONS DO NOT EXIST AT THE FOUNDATION LOCATION, IT IS THE ERECTOR'S RESPONSIBILITY TO NOTIFY EVERBRITE, LLC PRIOR TO PERFORMING ADDITIONAL EXCAVATION OR ANY CONCRETE PLACEMENT.

INSTALLATION INSTRUCTIONS

1. STAKE FOUNDATION AREA AND CONFIRM FINAL GRADE REQUIREMENTS WITH G. C.
2. EXCAVATE FOUNDATION AREA.
3. SET ANCHOR BOLTS, REBAR AND CONDUIT STUB. (PRIMARY ELECTRICAL SERVICE TO BASE BY G.C.)
4. POUR CONCRETE. ALLOW CONCRETE CURE TIME AS REQUIRED. RECOMMENDED MIN. CURE TIME OF 7 DAYS BEFORE PROCEEDING WITH INSTALLATION.
5. ANCHOR POLE(S) AS SHOWN IN AB DETAIL. CHECK FOR PLUMB.
6. MOUNT SIGNAGE TO POLE(S). (INSTALLER TO PROVIDE WIRE BETWEEN SIGN AND BASE OF POLE.)
7. MAKE FINAL ELECTRICAL HOOK-UP. (ALL ELECTRICAL TO MEET LOCAL CODES.)
8. TEST SIGNAGE FOR PROPER FUNCTION AND LIGHTING.
9. REMOVE ANY LIFTING BRACKETS AND REINSTALL BOLTS.
10. CLEAN UP AREA AND REMOVE ANY PACKING MATERIAL. DO NOT DISCARD ANY MATERIAL OR DEBRIS INTO ON SITE DUMPSTERS.

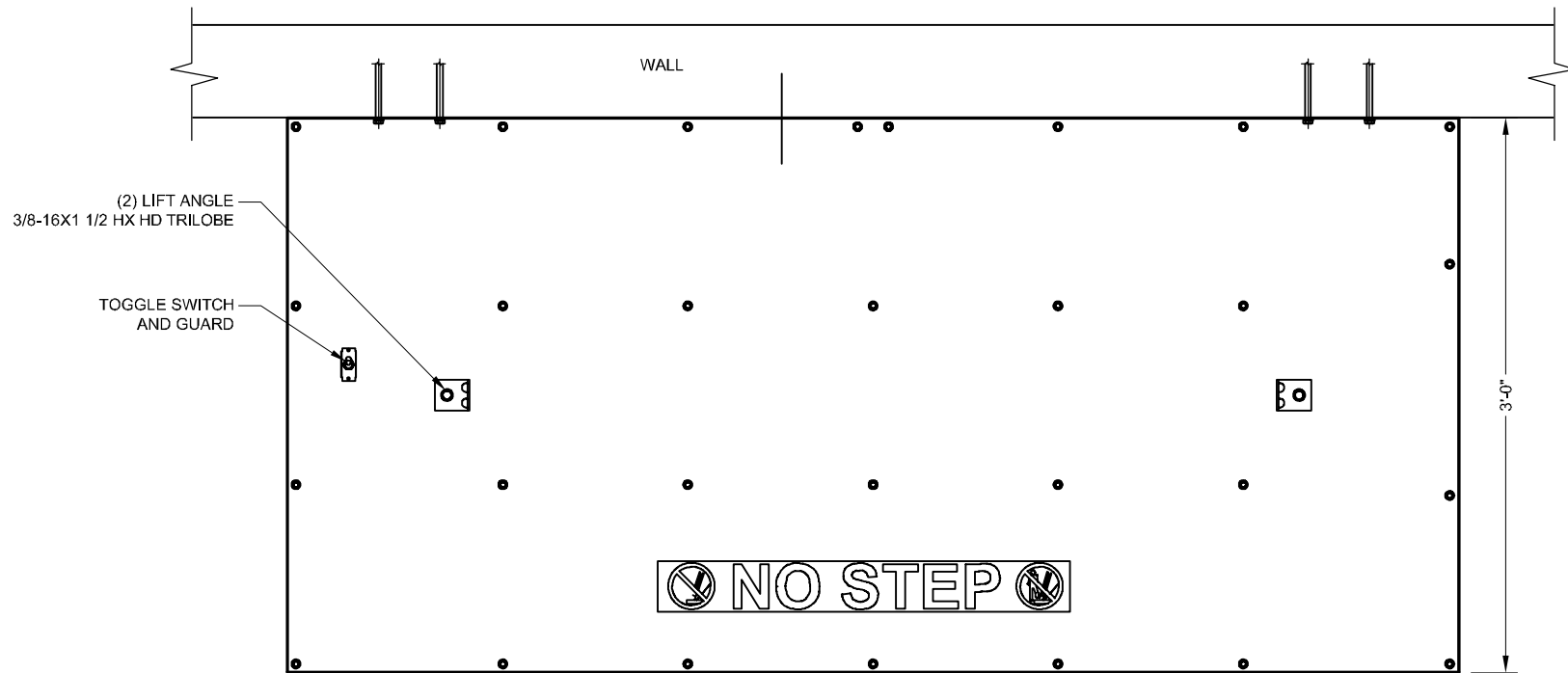


- Materials**
- Aluminum tube (6061-T6) construction with aluminum skin
- Area**
- Squared: 3.17 sf
- Downlighting:** (1) LED downlight fixture
- COLOR SPECIFICATIONS:**
RAL9011 Graphite Black

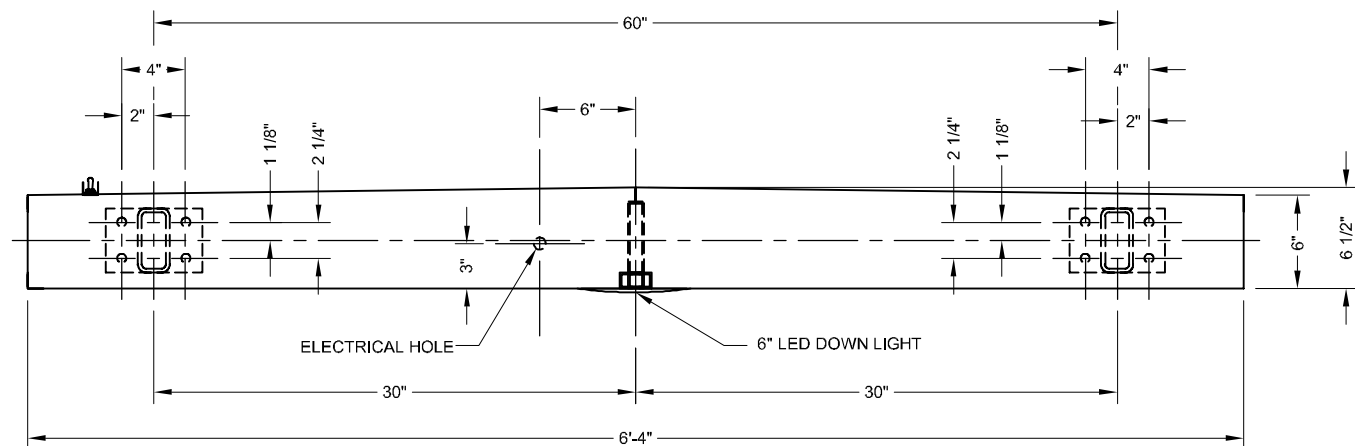


Customer/Site No: 40434	Prepared By: Christopher Koob	
Address: BELVIDERE ROAD LAKEMOOR, IL 60050	Date: 03/25/2022	PIF: 466740-0
Description: TACO BELL	Customer Signature:	

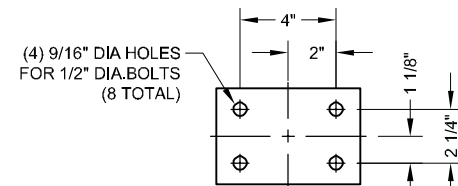




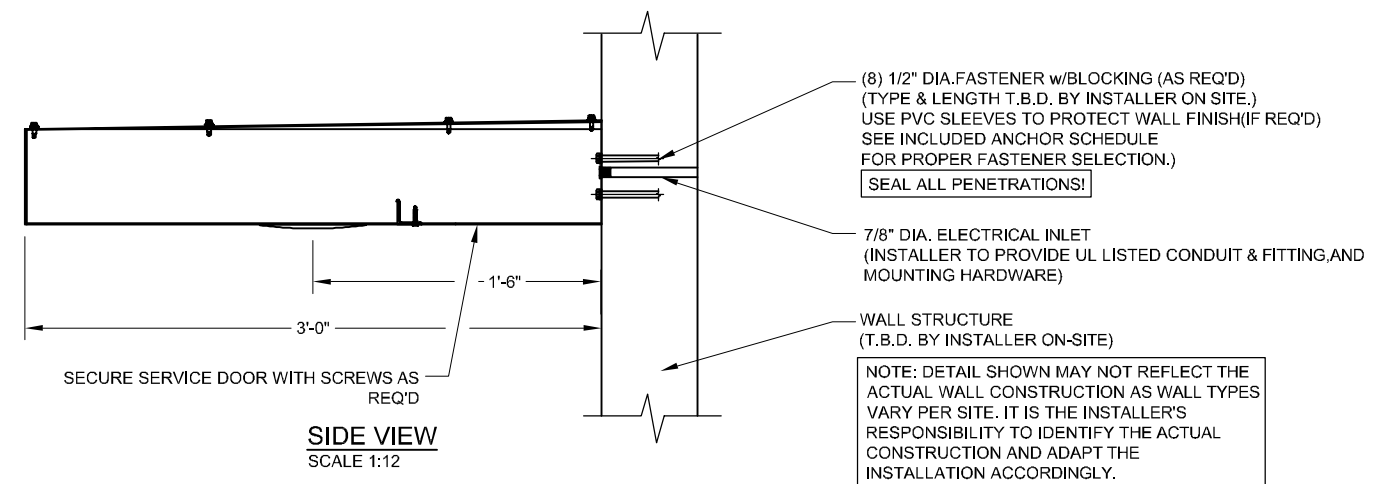
TOP VIEW
SCALE 1:12



FRONT VIEW W/ MOUNTING PATTERN
SCALE 1:12



(2) WALL MOUNTING DETAIL
SCALE 1:8



SIDE VIEW
SCALE 1:12

1/2" DIAMETER FASTENER CHART

WALL CONSTRUCTION	FASTENER	COMMENTS	EXAMPLE
WOOD BLOCKING ATTACHED BETWEEN AND TO STUDS	THRU BOLT WITH ANGLE OR UNISTRUT ACROSS STUDS	USE APA ENGINEERED WOOD ASSOCIATION FASTENER LOADS FOR PLYWOOD - BOLTS	
	LAG BOLTS (4 1/2" EMBEDMENT INTO BLOCKING)	STEEP REDUCTION FOR COMBINED WITHDRAWL AND LATERAL LOADS	
BRICK, CONCRETE BLOCK, SOLID CONCRETE	SLEEVE ANCHOR (2" MINIMUM EMBEDMENT)	SEE HILTI TECHNICAL GUIDE	
	HILTI HIT HY 20 OR EQUAL	SEE HILTI TECHNICAL GUIDE	

NOTE: ALL FASTENERS TO BE THRU BOLTS IF POSSIBLE, USE ALTERNATE FASTENERS PER WALL TYPE SHOWN ABOVE IF THRU BOLTING IS NOT POSSIBLE. ALL FASTENERS ARE TO BE CHOSEN AND PLACED IN ACCORDANCE WITH THE MANUFACTURER'S INSTALLATION INSTRUCTIONS.

GENERAL NOTES
INSTALLER TO PROVIDE COMPLETION PHOTOS OF MOUNTING/CONNECTION POINTS AND OVERALL ELEVATION.

THIS SIGN IS INTENDED TO BE INSTALLED IN ACCORDANCE WITH THE REQUIREMENTS OF ARTICLE 600 OF THE NATIONAL ELECTRIC CODE AND/OR OTHER APPLICABLE LOCAL CODES. THIS INCLUDES PROPER GROUNDING AND BONDING OF THE SIGN.

THIS DRAWING IS FOR INSTALLATION PURPOSES ONLY AND NOT TO BE USED FOR MANUFACTURING.

INSTALLATION INSTRUCTIONS

1. OPEN PACKAGING CAREFULLY AND INSPECT FOR DAMAGE. IF DAMAGE IS FOUND, CLAIM MUST BE FILED WITHIN 5-DAYS WITH SHIPPING AGENT.
2. DETERMINE SIGN LOCATION AND TAPE UP THE TEMPLATE (IF PROVIDED) ON THE SURFACE TO WHICH IT WILL BE INSTALLED, RECEIVE CONFIRMATION FROM CLIENT OR CONTRACTOR.
3. LAYOUT AND PRE-DRILL ALL REQUIRED MOUNTING HOLES.
4. FILL ALL HOLES WITH SILICONE PRIOR TO MOUNTING THE CANOPY.
5. ALIGN CANOPY TO MATCHING PRE-DRILLED HOLES WHILE INSERTING FASTENERS THROUGH CANOPY, WALL AND BLOCKING (AS REQ'D). FASTEN WITH HARDWARE. USE PVC SLEEVES TO PROTECT WALL FINISH OVER SHEATHING (IF NECESSARY).
6. MAKE ELECTRICAL CONNECTIONS.
7. PERFORM TOUCH-UP AS REQUIRED
8. CLEAN INSTALLATION WORK SITE OF ALL EXCESS MATERIALS AND DEBRIS. DO NOT DISCARD ANY MATERIAL OR DEBRIS INTO ON SITE DUMPSTERS.

(8) 1/2" DIA.FASTENER w/BLOCKING (AS REQ'D)
(TYPE & LENGTH T.B.D. BY INSTALLER ON SITE.)
USE PVC SLEEVES TO PROTECT WALL FINISH(IF REQ'D)
SEE INCLUDED ANCHOR SCHEDULE FOR PROPER FASTENER SELECTION.)

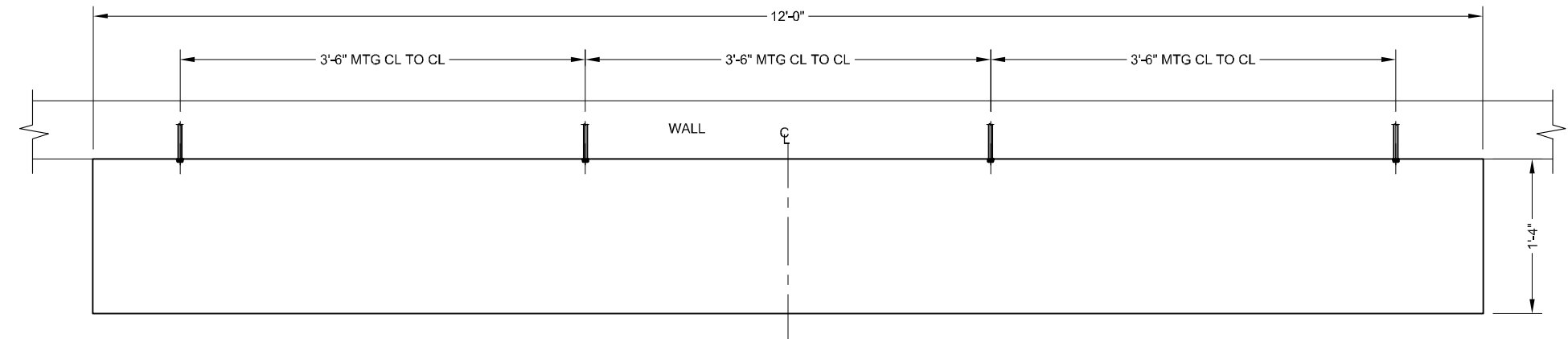
SEAL ALL PENETRATIONS!

7/8" DIA. ELECTRICAL INLET
(INSTALLER TO PROVIDE UL LISTED CONDUIT & FITTING,AND MOUNTING HARDWARE)

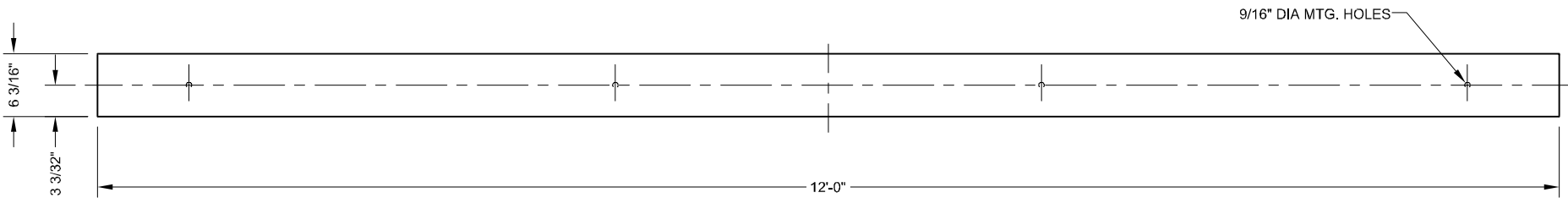
WALL STRUCTURE
(T.B.D. BY INSTALLER ON-SITE)

NOTE: DETAIL SHOWN MAY NOT REFLECT THE ACTUAL WALL CONSTRUCTION AS WALL TYPES VARY PER SITE. IT IS THE INSTALLER'S RESPONSIBILITY TO IDENTIFY THE ACTUAL CONSTRUCTION AND ADAPT THE INSTALLATION ACCORDINGLY.

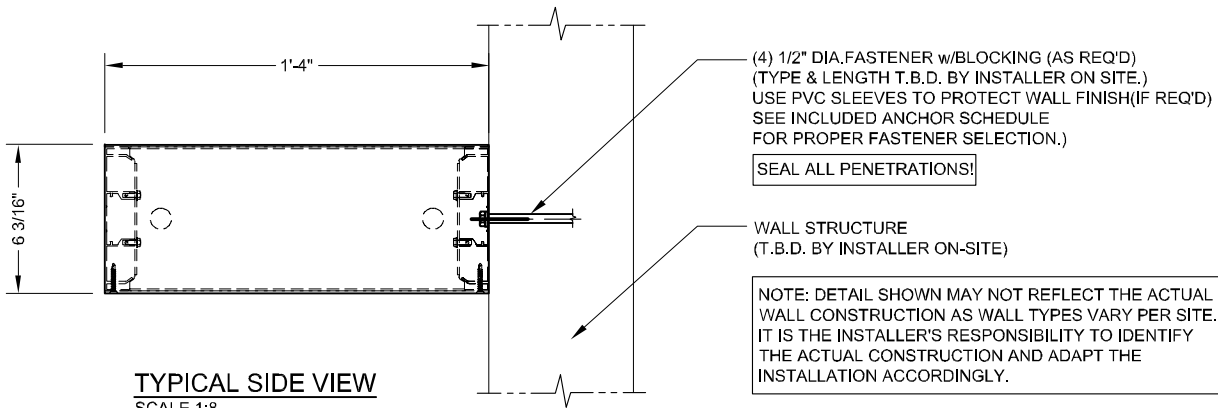
ELECTRICAL SPECIFICATION:
1 AMPS @ 120VAC 6.
(1) 20 AMP CIRCUIT, 60Hz UL 48 & NEC COMPLIANT



TOP VIEW
SCALE 1:16



FRONT VIEW
SCALE 1:16



TYPICAL SIDE VIEW
SCALE 1:8

1/2" DIAMETER FASTENER CHART

WALL CONSTRUCTION	FASTENER	COMMENTS	EXAMPLE
WOOD BLOCKING ATTACHED BETWEEN AND TO STUDS	THRU BOLT WITH ANGLE OR UNISTRUT ACROSS STUDS	USE APA ENGINEERED WOOD ASSOCIATION FASTENER LOADS FOR PLYWOOD - BOLTS	
	LAG BOLTS (4 1/2" EMBEDMENT INTO BLOCKING)	STEEP REDUCTION FOR COMBINED WITHDRAWL AND LATERAL LOADS	
BRICK, CONCRETE BLOCK, SOLID CONCRETE	SLEEVE ANCHOR (2" MINIMUM EMBEDMENT)	SEE HILTI TECHNICAL GUIDE	
	HILTI HIT HY 20 OR EQUAL	SEE HILTI TECHNICAL GUIDE	
NOTE: ALL FASTENERS TO BE THRU BOLTS IF POSSIBLE, USE ALTERNATE FASTENERS PER WALL TYPE SHOWN ABOVE IF THRU BOLTING IS NOT POSSIBLE. ALL FASTENERS ARE TO BE CHOSEN AND PLACED IN ACCORDANCE WITH THE MANUFACTURER'S INSTALLATION INSTRUCTIONS.			

INSTALLER TO PROVIDE COMPLETION PHOTOS OF MOUNTING/CONNECTION POINTS, OVERALL ELEVATION, AND SEALED PENETRATION.

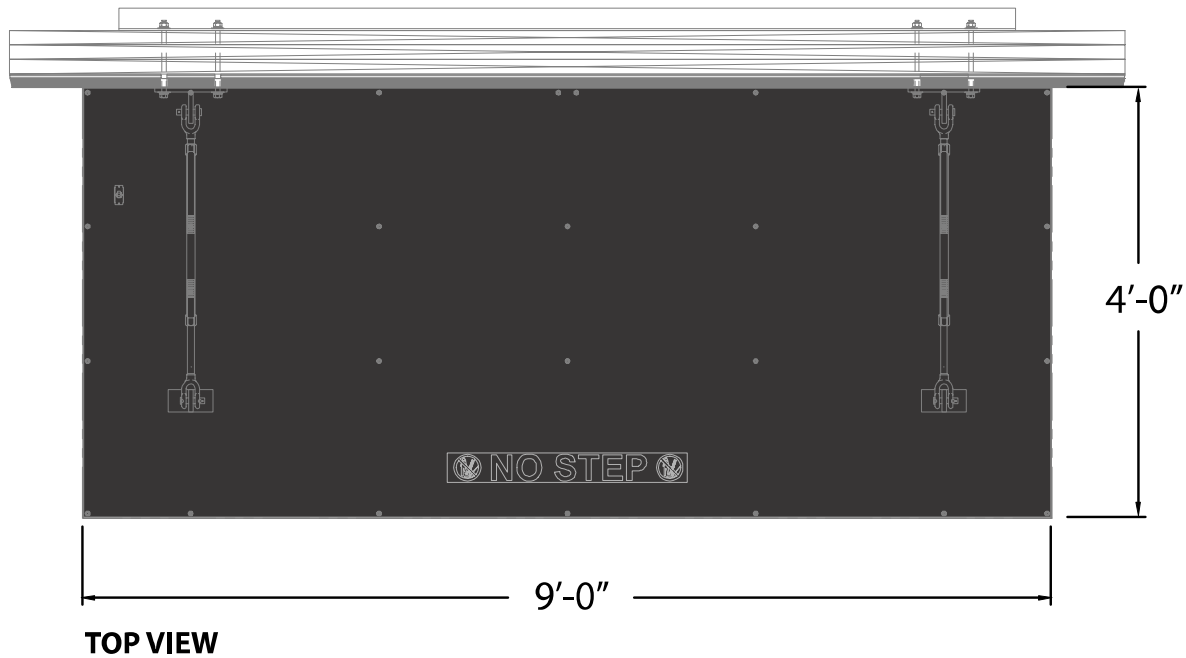
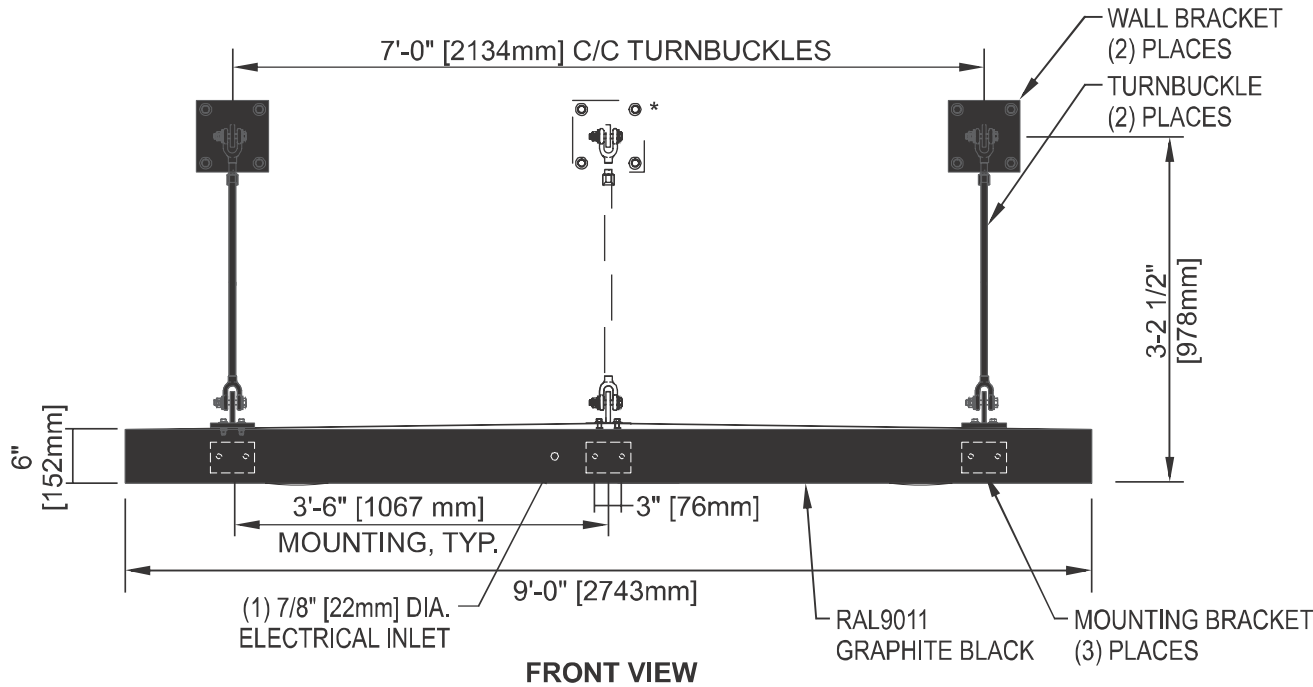
SIGN ASSEMBLY IS INTENDED FOR OUTDOOR WET LOCATION

INSTALLER TO VERIFY SIGN IS PROPERLY INSTALLED, CONNECTED AND GROUNDED.

THIS DRAWING IS FOR INSTALLATION PURPOSES ONLY AND NOT TO BE USED FOR MANUFACTURING.

INSTALLATION INSTRUCTIONS

1. OPEN PACKAGING CAREFULLY AND INSPECT FOR DAMAGE.
2. DETERMINE CANOPY LOCATION AND TAPE UP THE TEMPLATE (IF PROVIDED) ON THE SURFACE TO WHICH IT WILL BE INSTALLED, RECEIVE CONFIRMATION FROM CLIENT.
3. LAYOUT AND PRE-DRILL ALL REQUIRED MOUNTING.
4. FILL ALL HOLES WITH SILICONE PRIOR TO MOUNTING THE CANOPY.
5. ALIGN CANOPY TO MATCHING PRE-DRILLED HOLES WHILE INSERTING FASTENERS THROUGH CANOPY, WALL AND BLOCKING (AS REQ'D). FASTEN WITH HARDWARE. USE PVC SLEEVES TO PROTECT WALL FINISH OVER SHEATHING (IF NECESSARY).
6. PERFORM TOUCH-UP AS REQUIRED
7. CLEAN INSTALLATION WORK SITE OF ALL EXCESS MATERIALS AND DEBRIS. DO NOT DISCARD ANY MATERIAL OR DEBRIS INTO ON SITE DUMPSTERS.



Materials

- Aluminum tube (6061-T6) construction with aluminum skin
- Suspended with turnbuckles and plates

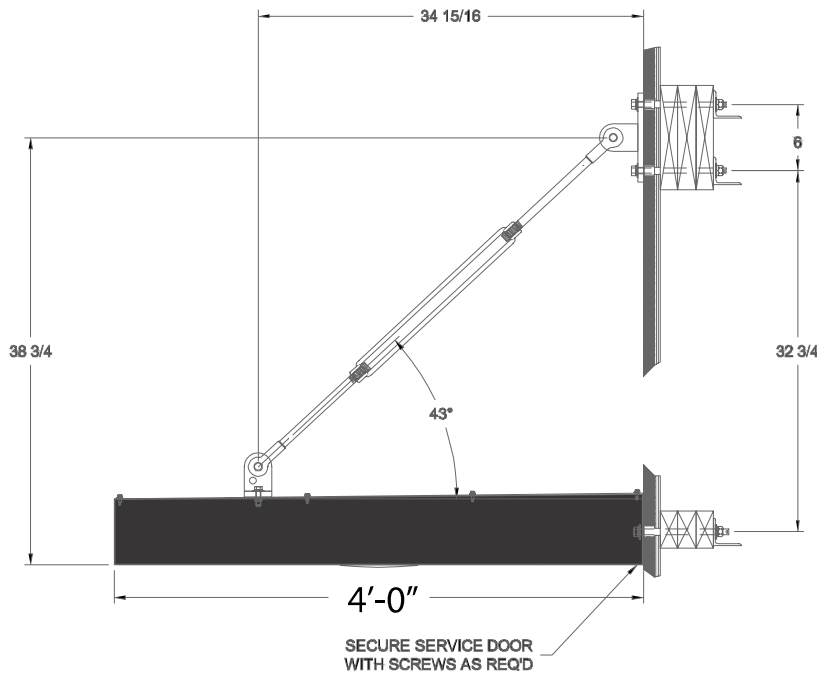
Area

- Squared: 4.50 sf

Downlighting: (2) LED downlight fixtures

COLOR SPECIFICATIONS:

RAL9011 Graphite Black



Everbrite, LLC • 4949 South 110th Street • Greenfield, WI 53228 • www.everbrite.com

Customer/Site No: 40434

Address: BELVIDERE ROAD LAKEMOOR, IL 60050

Description: TACO BELL

Prepared By: Christopher Koob

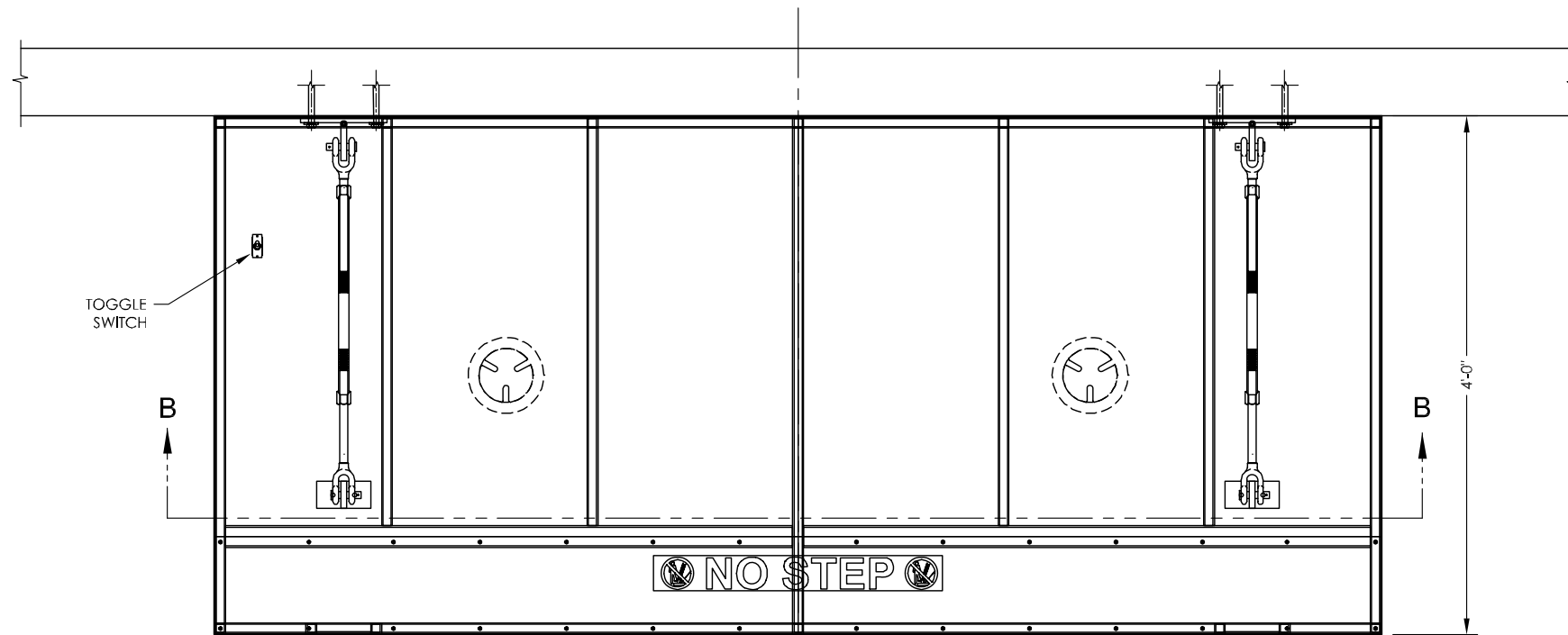
Date: 03/25/2022

PIF: 466740-0

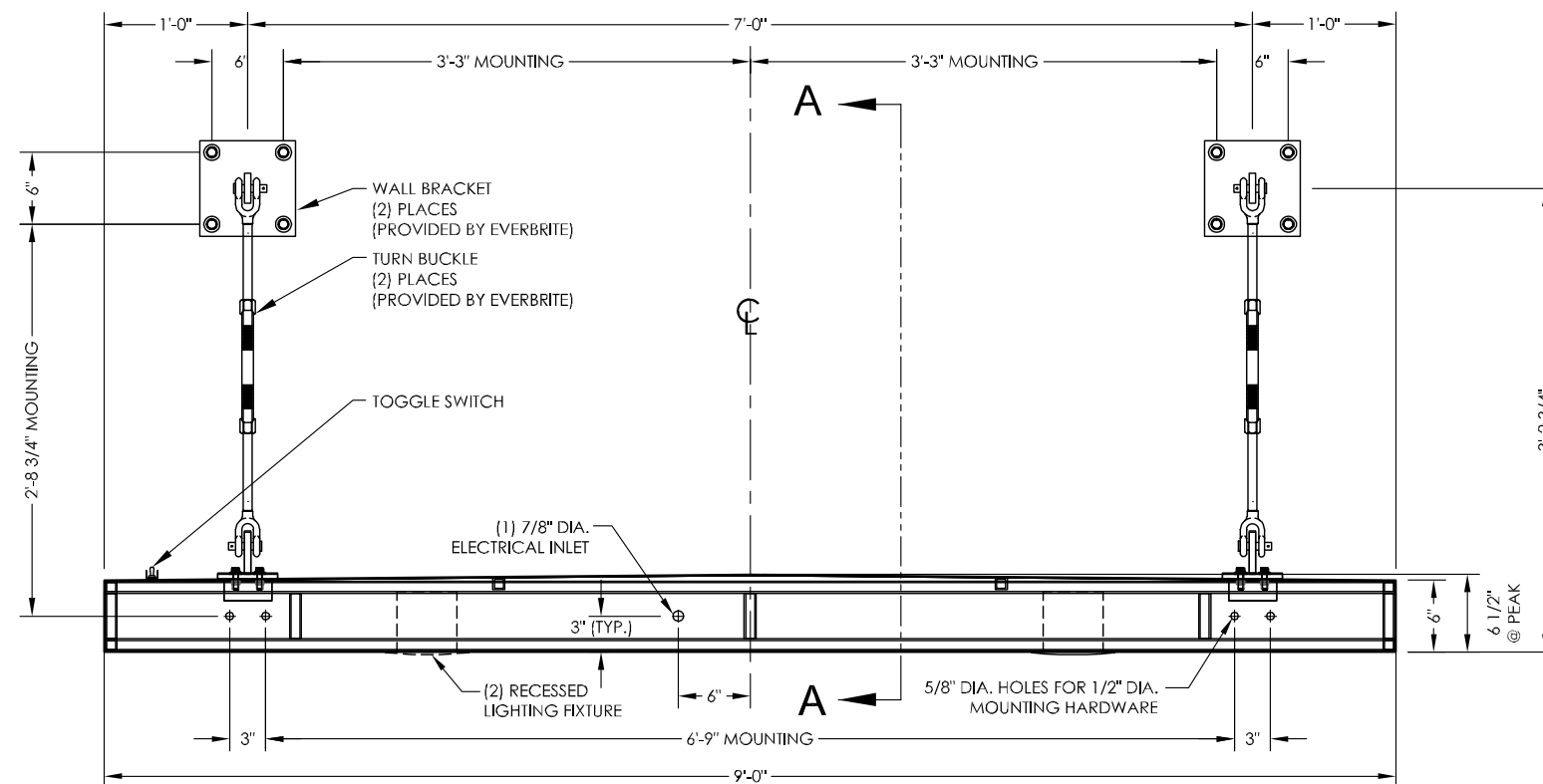
Customer Signature:



These drawings and designs are the exclusive property of Everbrite, LLC. Use or duplication in any manner, without express written permission of Everbrite, LLC, is prohibited.



TOP VIEW (FRAMEWORK)
SCALE 1:16



SECTION "B-B"
SCALE 1:16

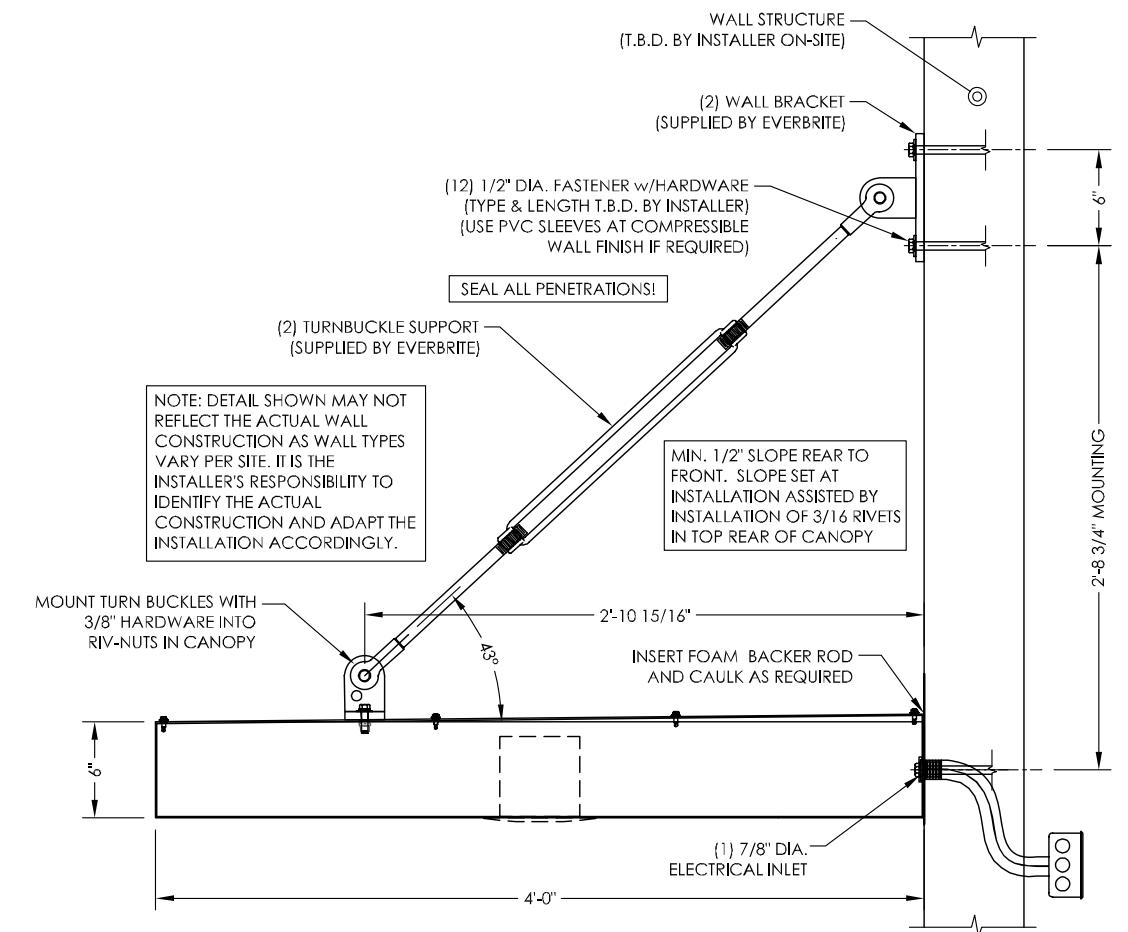
GENERAL NOTES

INSTALLER TO PROVIDE COMPLETION PHOTOS OF MOUNTING LOCATIONS, ELECTRICAL WIRING AND OVERALL ELEVATIONS.

THIS SIGN IS INTENDED TO BE INSTALLED IN ACCORDANCE WITH THE REQUIREMENTS OF ARTICLE 600 OF THE NATIONAL ELECTRIC CODE AND/OR OTHER APPLICABLE LOCAL CODES. THIS INCLUDES PROPER GROUNDING AND BONDING OF THE SIGN.

INSTALLER TO VERIFY SIGNS ARE PROPERLY INSTALLED, CONNECTED AND GROUNDED.

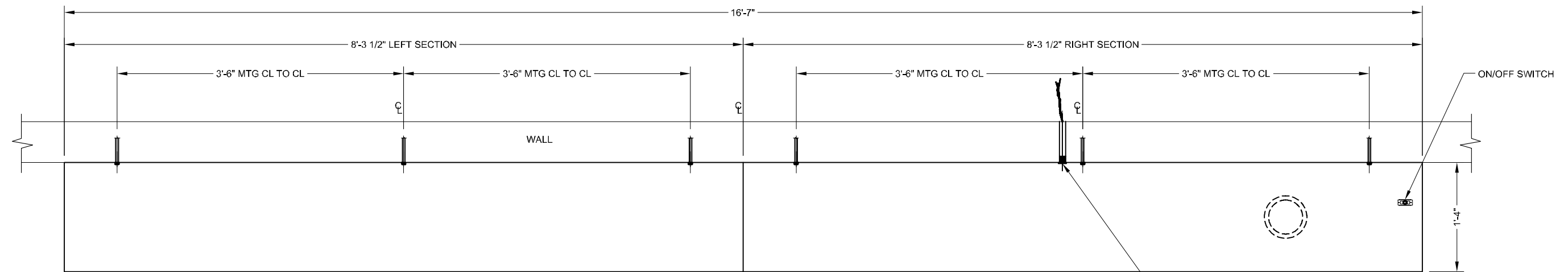
THIS DRAWING IS FOR INSTALLATION PURPOSES ONLY AND NOT TO BE USED FOR MANUFACTURING.



SECTION "A-A"
SCALE 1:12

INSTALLATION INSTRUCTIONS

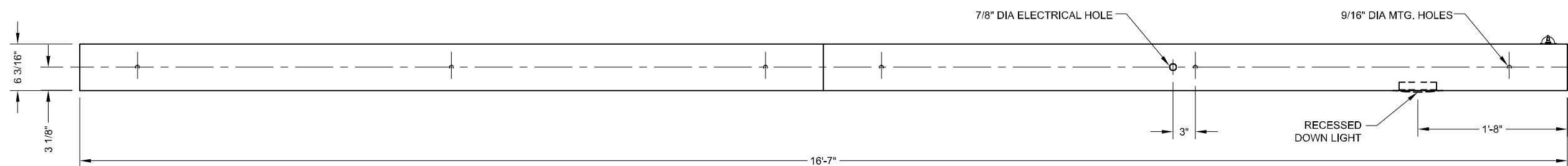
1. OPEN PACKAGING CAREFULLY AND INSPECT FOR DAMAGE. IF DAMAGE IS FOUND, CLAIM MUST BE FILED WITHIN 5-DAYS WITH SHIPPING AGENT.
2. DETERMINE CANOPY LOCATION AND TAPE UP THE PROVIDED TEMPLATE ONTO THE SURFACE TO WHICH IT WILL BE INSTALLED, RECEIVE CONFIRMATION FROM CLIENT OR CONTRACTOR.
3. LAYOUT AND PRE-DRILL ALL MOUNTING AND ELECTRICAL HOLES REQUIRED FOR INSTALLATION.
4. FILL ALL HOLES WITH SILICONE PRIOR TO MOUNTING THE CANOPY.
5. USING BOOM, RAISE AND ALIGN CANOPY TO MATCHING PRE-DRILLED HOLES.
6. REMOVE BOTTOM PANEL AND INSERT FASTENERS THROUGH CANOPY MOUNTING PLATES, WALL AND BLOCKING (AS REQUIRED). FASTEN WITH HARDWARE. USE PVC SLEEVES TO PROTECT BUILDING FINISH (IF REQUIRED).
7. SEAL CANOPY AT WALL ACROSS TOP AND DOWN THE SIDES.
8. MAKE ELECTRICAL CONNECTIONS.
9. TURN ON BREAKER AND TEST SIGN TO MAKE SURE ALL ELECTRICAL COMPONENTS ARE WORKING PROPERLY.
10. PERFORM TOUCH-UP AS REQUIRED.
11. CLEAN INSTALLATION WORK SITE OF ALL EXCESS MATERIALS AND DEBRIS. DO NOT DISCARD ANY MATERIAL OR DEBRIS INTO ON SITE DUMPSTERS.



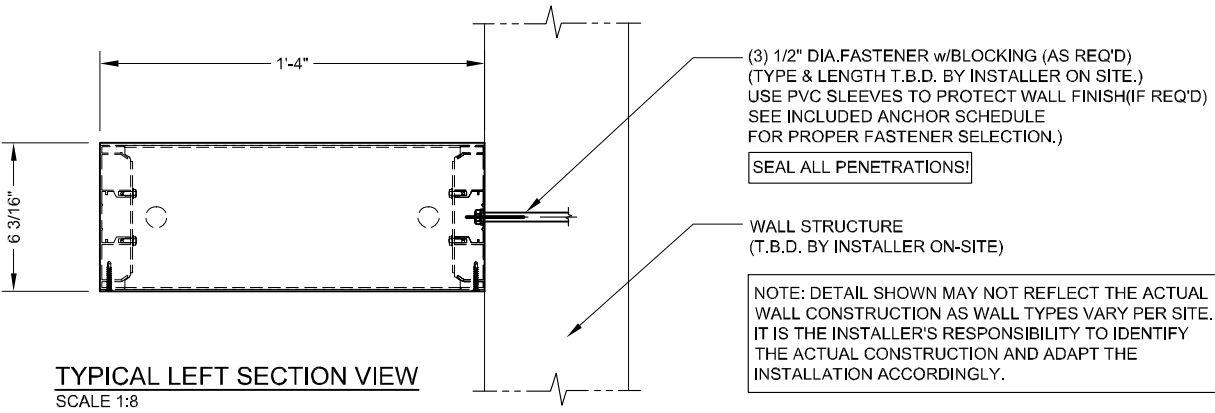
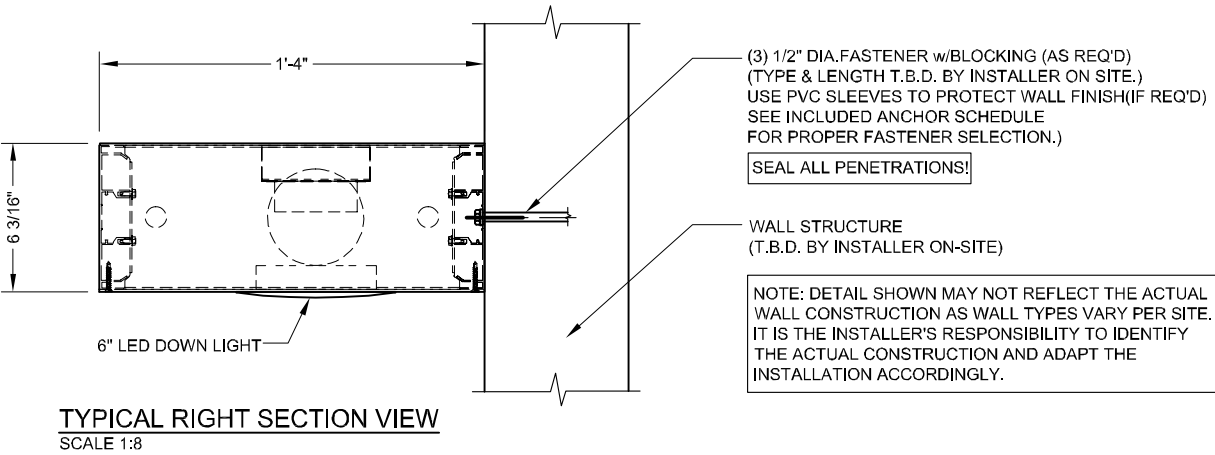
TOP VIEW
SCALE 1:16

(1) 7/8" DIA. ELECTRICAL INLET
(INSTALLER TO PROVIDE UL LISTED CONDUIT &
FITTING, AND MOUNTING HARDWARE)

NOTE: DETAIL SHOWN MAY NOT REFLECT THE ACTUAL WALL CONSTRUCTION AS
WALL TYPES VARY PER SITE. IT IS THE INSTALLER'S RESPONSIBILITY TO IDENTIFY
THE ACTUAL CONSTRUCTION AND ADAPT THE INSTALLATION ACCORDINGLY.



FRONT VIEW
SCALE 1:16



INSTALLER TO PROVIDE COMPLETION PHOTOS OF MOUNTING/CONNECTION POINTS, WIRE ROUTING, OVERALL ELEVATION, AND SEALED PENETRATION.

THIS SIGN IS INTENDED TO BE INSTALLED IN ACCORDANCE WITH THE REQUIREMENTS OF ARTICLE 600 OF THE NATIONAL ELECTRIC CODE AND/OR OTHER APPLICABLE LOCAL CODES. THIS INCLUDES PROPER GROUNDING AND BONDING OF THE SIGN AND INSTALLING DISCONNECT SWITCHES IF NOT FACTORY INSTALLED ON THE SIGN.

SIGN ASSEMBLY IS INTENDED FOR OUTDOOR WET LOCATION

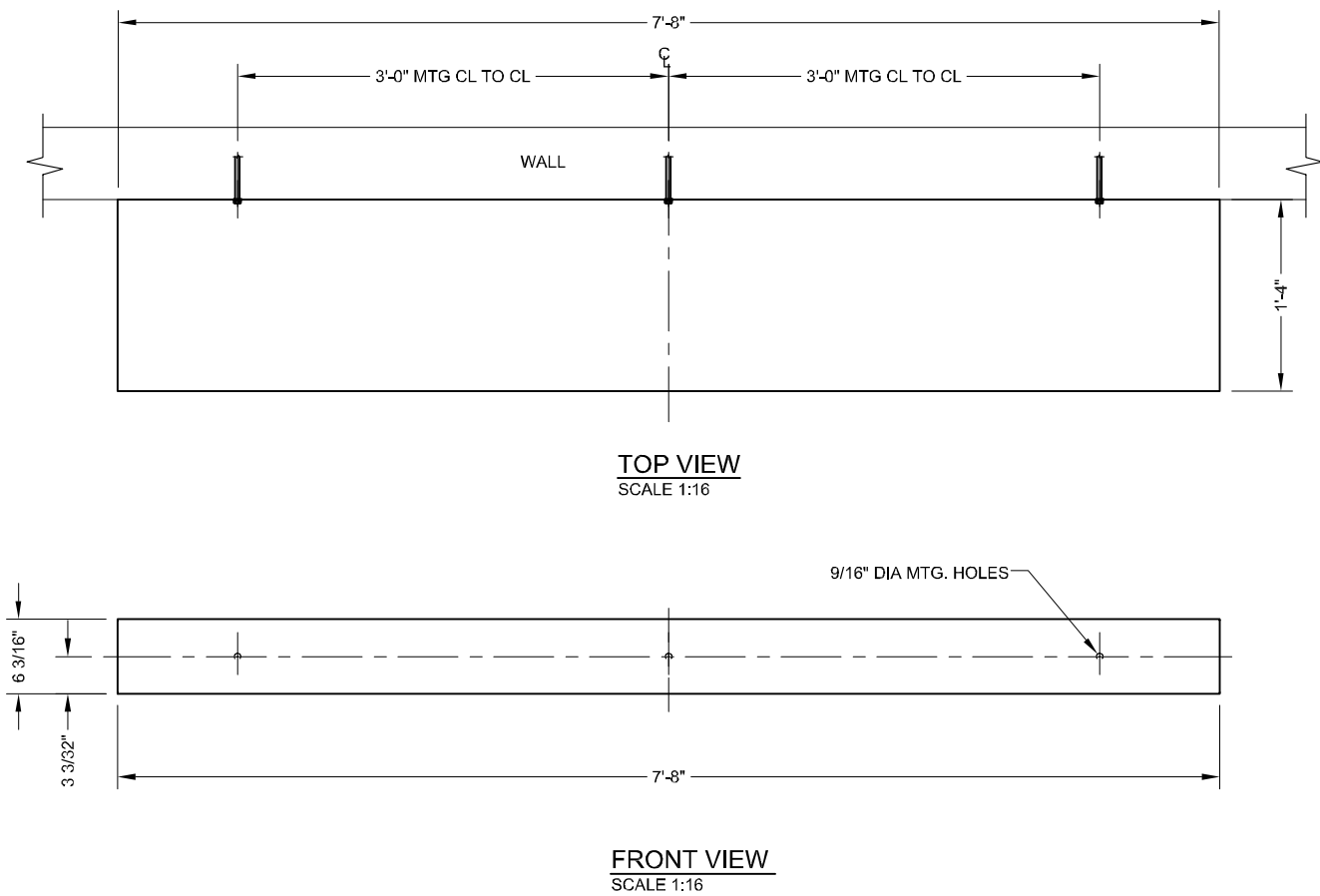
INSTALLER TO VERIFY SIGN IS PROPERLY INSTALLED, CONNECTED AND GROUNDED.

THIS DRAWING IS FOR INSTALLATION PURPOSES ONLY AND NOT TO BE USED FOR MANUFACTURING.

- INSTALLATION INSTRUCTIONS**
- 1. OPEN PACKAGING CAREFULLY AND INSPECT FOR DAMAGE.
 - 2. DETERMINE SIGN LOCATION AND TAPE UP THE TEMPLATE (IF PROVIDED) ON THE SURFACE TO WHICH IT WILL BE INSTALLED, RECEIVE CONFIRMATION FROM CLIENT.
 - 3. LAYOUT AND PRE-DRILL ALL REQUIRED MOUNTING AND ELECTRICAL HOLES.
 - 4. FILL ALL HOLES WITH SILICONE PRIOR TO MOUNTING THE CANOPY.
 - 5. ALIGN CANOPY TO MATCHING PRE-DRILLED HOLES WHILE INSERTING FASTENERS THROUGH CANOPY, WALL AND BLOCKING (AS REQ'D). FASTEN WITH HARDWARE. USE PVC SLEEVES TO PROTECT WALL FINISH (IF NECESSARY).
 - 6. MAKE FINAL ELECTRICAL HOOK UP TO PRIMARY WIRING OF POWER SUPPLIES THROUGH DRILLED ELECTRICAL HOLES.
 - 7. TEST LIGHT FOR PROPER FUNCTION AND ILLUMINATION.
 - 8. PERFORM TOUCH-UP AS REQUIRED
 - 9. CLEAN INSTALLATION WORK SITE OF ALL EXCESS MATERIALS AND DEBRIS. DO NOT DISCARD ANY MATERIAL OR DEBRIS INTO ON SITE DUMPSTERS.

1/2" DIAMETER FASTENER CHART			
WALL CONSTRUCTION	FASTENER	COMMENTS	EXAMPLE
WOOD BLOCKING ATTACHED BETWEEN AND TO STUDS	THRU BOLT WITH ANGLE OR UNISTRUT ACROSS STUDS	USE APA ENGINEERED WOOD ASSOCIATION FASTENER LOADS FOR PLYWOOD - BOLTS	
	LAG BOLTS (4 1/2" EMBEDMENT INTO BLOCKING)	STEEP REDUCTION FOR COMBINED WITHDRAWL AND LATERAL LOADS	
BRICK, CONCRETE BLOCK, SOLID CONCRETE	SLEEVE ANCHOR (2" MINIMUM EMBEDMENT)	SEE HILTI TECHNICAL GUIDE	
	HILTI HIT HY 20 OR EQUAL	SEE HILTI TECHNICAL GUIDE	
NOTE: ALL FASTENERS TO BE THRU BOLTS IF POSSIBLE, USE ALTERNATE FASTENERS PER WALL TYPE SHOWN ABOVE IF THRU BOLTING IS NOT POSSIBLE. ALL FASTENERS ARE TO BE CHOSEN AND PLACED IN ACCORDANCE WITH THE MANUFACTURER'S INSTALLATION INSTRUCTIONS.			





GENERAL NOTES
INSTALLER TO PROVIDE COMPLETION PHOTOS OF MOUNTING/CONNECTION POINTS, OVERALL ELEVATION, AND SEALED PENETRATION.

SIGN ASSEMBLY IS INTENDED FOR OUTDOOR WET LOCATION

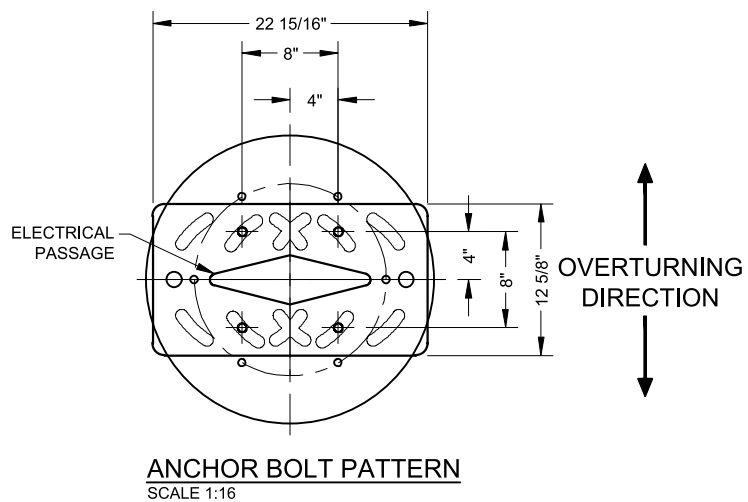
INSTALLER TO VERIFY SIGN IS PROPERLY INSTALLED, CONNECTED AND GROUNDED.

THIS DRAWING IS FOR INSTALLATION PURPOSES ONLY AND NOT TO BE USED FOR MANUFACTURING.

- INSTALLATION INSTRUCTIONS**
1. OPEN PACKAGING CAREFULLY AND INSPECT FOR DAMAGE.
 2. DETERMINE CANOPY LOCATION AND TAPE UP THE TEMPLATE (IF PROVIDED) ON THE SURFACE TO WHICH IT WILL BE INSTALLED, RECEIVE CONFIRMATION FROM CLIENT.
 3. LAYOUT AND PRE-DRILL ALL REQUIRED MOUNTING.
 4. FILL ALL HOLES WITH SILICONE PRIOR TO MOUNTING THE CANOPY.
 5. ALIGN CANOPY TO MATCHING PRE-DRILLED HOLES WHILE INSERTING FASTENERS THROUGH CANOPY, WALL AND BLOCKING (AS REQ'D). FASTEN WITH HARDWARE. USE PVC SLEEVES TO PROTECT WALL FINISH OVER SHEATHING (IF NECESSARY).
 6. PERFORM TOUCH-UP AS REQUIRED
 7. CLEAN INSTALLATION WORK SITE OF ALL EXCESS MATERIALS AND DEBRIS. DO NOT DISCARD ANY MATERIAL OR DEBRIS INTO ON SITE DUMPSTERS.

1/2" DIAMETER FASTENER CHART			
WALL CONSTRUCTION	FASTENER	COMMENTS	EXAMPLE
WOOD BLOCKING ATTACHED BETWEEN AND TO STUDS	THRU BOLT WITH ANGLE OR UNISTRUT ACROSS STUDS	USE APA ENGINEERED WOOD ASSOCIATION FASTENER LOADS FOR PLYWOOD - BOLTS	
	LAG BOLTS (4 1/2" EMBEDMENT INTO BLOCKING)	STEEP REDUCTION FOR COMBINED WITHDRAWL AND LATERAL LOADS	
BRICK, CONCRETE BLOCK, SOLID CONCRETE	SLEEVE ANCHOR (2" MINIMUM EMBEDMENT)	SEE HILTI TECHNICAL GUIDE	
	HILTI HIT HY 20 OR EQUAL	SEE HILTI TECHNICAL GUIDE	
NOTE: ALL FASTENERS TO BE THRU BOLTS IF POSSIBLE, USE ALTERNATE FASTENERS PER WALL TYPE SHOWN ABOVE IF THRU BOLTING IS NOT POSSIBLE. ALL FASTENERS ARE TO BE CHOSEN AND PLACED IN ACCORDANCE WITH THE MANUFACTURER'S INSTALLATION INSTRUCTIONS.			





- WEIGHT : 915 LBS

- ### INSTALLATION INSTRUCTIONS
1. STAKE FOUNDATION AREA AND CONFIRM FINAL GRADE REQUIREMENTS WITH G. C.
 2. EXCAVATE FOUNDATION AREA.
 3. SET ANCHOR BOLTS, REBAR AND CONDUIT STUB. (PRIMARY ELECTRICAL SERVICE TO BASE BY G.C.)
 4. POUR CONCRETE. ALLOW CONCRETE CURE TIME AS REQUIRED. RECOMMENDED MINIMUM CURE TIME OF 7 DAYS BEFORE PROCEEDING WITH INSTALLATION.
 5. ANCHOR POLE(S) AS SHOWN IN AB DETAIL. CHECK FOR PLUMB.
 6. MOUNT SIGNAGE TO POLE(S). (INSTALLER TO PROVIDE WIRE BETWEEN SIGN AND BASE OF POLE.)
 7. MAKE FINAL ELECTRICAL HOOK-UP. (ALL ELECTRICAL TO MEET LOCAL CODES.)
 8. TEST SIGNAGE FOR PROPER FUNCTION AND LIGHTING.
 9. REMOVE ANY LIFTING BRACKETS AND REINSTALL BOLTS.
 10. CLEAN UP AREA AND REMOVE ANY PACKING MATERIAL. DO NOT DISCARD ANY MATERIAL OR DEBRIS INTO ON SITE DUMPSTERS.

HME[®]

Concrete Foundation
For SPP2 Speaker Post

INSTALLATION INSTRUCTIONS

The SPP2 Speaker Post requires a concrete foundation with four anchor bolts and one or more conduits embedded in it. One conduit must be installed for the audio cable. Additional conduit(s) may be required for a vehicle detection cable and/or for an AC electrical cable. These instructions are for installation of the SPP2 concrete foundation at new drive-thru sites.

CAUTION: All electrical connections must be made by a licensed electrical contractor.

If you have any questions regarding this installation, call HME Customer Support at 1-800-848-4468.

Equipment Provided

- 1 ea Template
- 4 ea Anchor bolt with 2 hexagonal nuts

Material Required

Concrete, 6 cubic feet

Procedure

- Position the foundation so that water will drain away from the base of the speaker post. The top surface of the foundation must be six to ten inches above the surface of the drive-thru lane. The side of the foundation must be 2 feet or less from the side of the drive-thru lane, and parallel to the lane as shown in Figure 2.

Build a 24 x 24 inch form with its top six to ten inches above the surface of the drive-thru lane. Dig a hole in the ground to a depth 18 inches below the top of the form for pouring the concrete foundation shown in Figure 1.

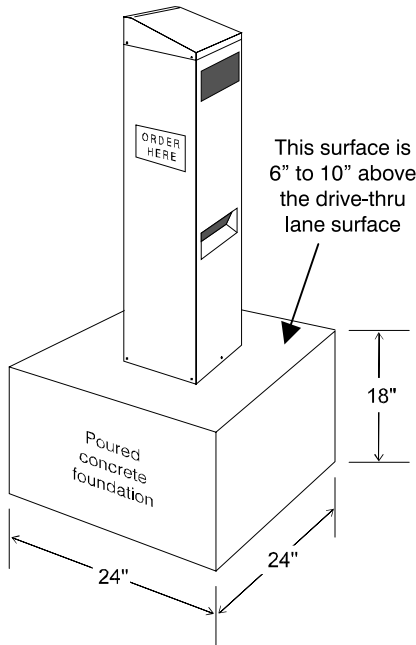


Figure 1. SPP2 Speaker Post on concrete foundation

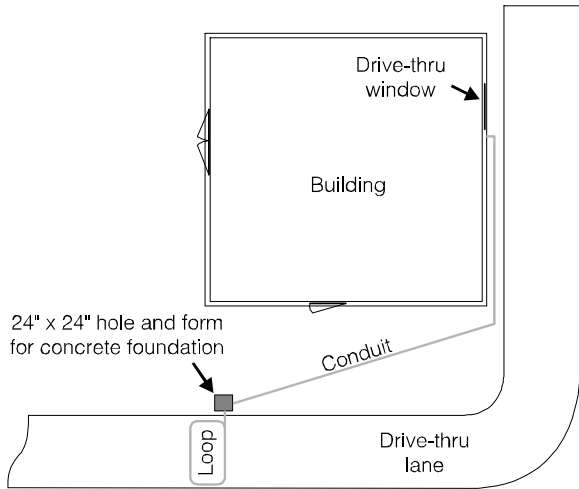


Figure 2. Typical site for concrete foundation

NOTE: In environments where permafrost is a problem, such as in northern Canada or Alaska, different concrete foundation measurements may be required than those

2. Remove one of the two hexagonal nuts from each of the anchor bolts.

Be certain the second nut is all the way down to the bottom of the threaded area on the anchor bolt as shown in Figure 3.

Put the threaded end of each anchor bolt through one of the ½ inch holes in the template, and replace the nut on the anchor bolt until it holds the template snugly between the two nuts.

Position the "L" ends of the anchor bolts outward, away from each other. Place the anchor bolts into the hole in the ground with the template ¼" to ½" above the top of the form, as level as possible. Be certain to comply with the note on the template to place one edge of the template "TOWARD DRIVE-THRU LANE."

3. Route the conduit (one or more) so it/they will extend through the center of the hole, and upward approximately 6 inches through the center of the template as shown in Figure 4.

NOTE: If a loop-type vehicle detector will be used, a separate conduit must be dedicated for the loop cable.

4. Hold the template steady, and fill the hole with concrete to the bottom of the template. Smooth the concrete, sloping it away from the template toward the form for proper drainage, and allow it to dry.

After the concrete has dried, remove the upper nuts and template from the anchor bolts.

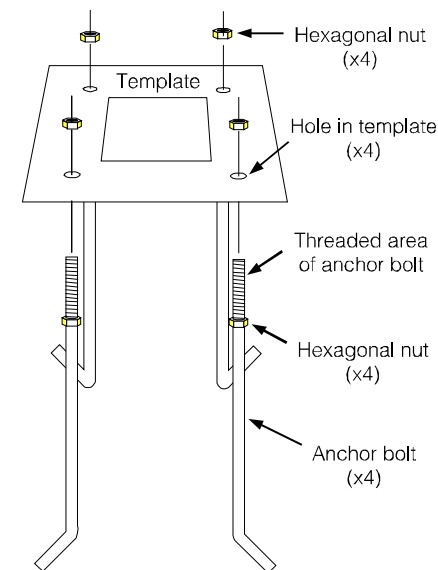


Figure 3. Assembly of anchor bolts with template

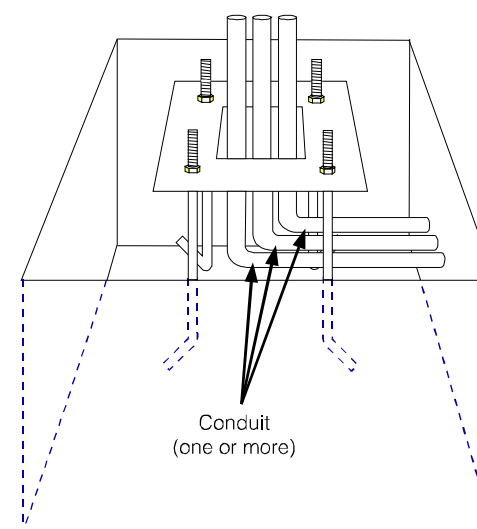


Figure 4. template, anchor bolt and conduit positions in hole

In the event of an electrical power outage —