



3001 WEST BELTLINE HIGHWAY – MADISON, WI

BUILDING	48,000 GSF, Four Floors, Class-A
LOCATION	Conveniently located on the Central Beltline with exposure to 150,000+ cars per day and close proximity to restaurants, bus line, bike path, fitness studio, health spa, and more.
AVAILABLE	First Floor – 10,773 USF / 11,850 RSF Third Floor – 722 USF / 795 RSF

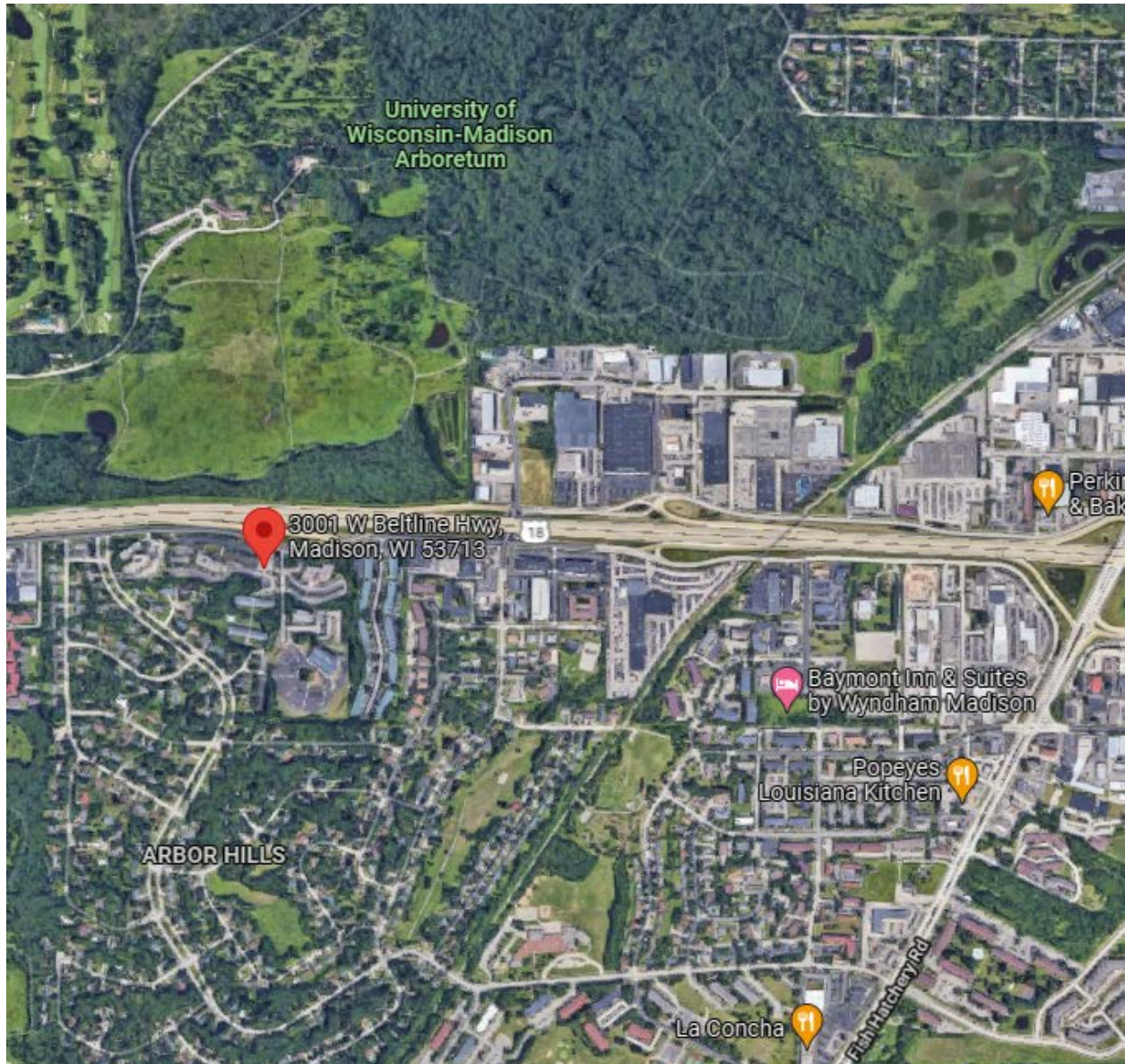
Brandi Zander
VP of Brokerage & Development
608-509-1002
bzander@migllc.biz

MIG Commercial Real Estate
3001 West Beltline Hwy, #202
Madison, WI 53713
www.migllc.biz



MAP VIEW

3001 WEST BELTLINE HIGHWAY – MADISON, WI



Brandi Zander
VP of Brokerage & Development
608-509-1002
bzander@migllc.biz

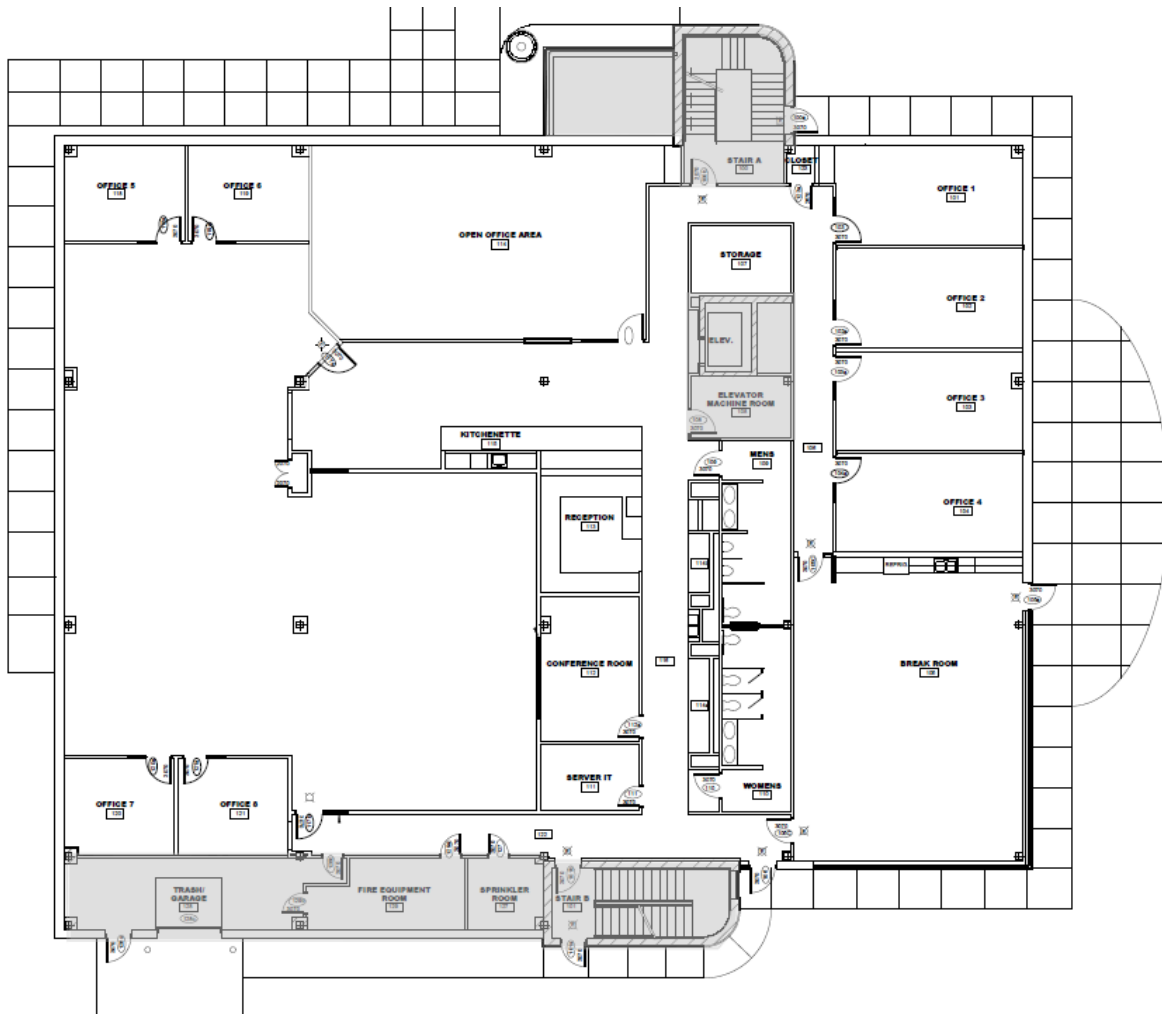
MIG Commercial Real Estate
3001 West Beltline Hwy, #202
Madison, WI 53713
www.migllc.biz



SPACE FOR LEASE

3001 WEST BELTLINE HIGHWAY – MADISON, WI

FIRST FLOOR
10,773 USF / 11,850 RSF



Brandi Zander
VP of Brokerage & Development
608-509-1002
bzander@migllc.biz

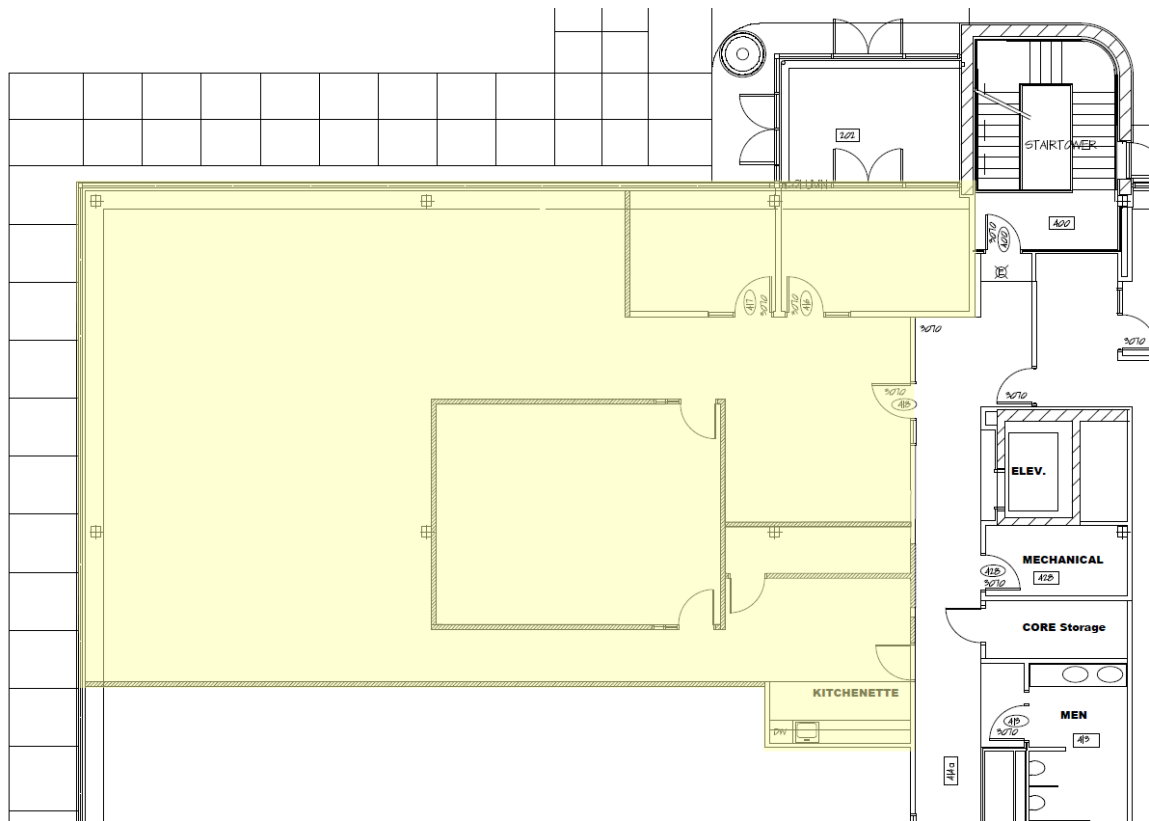
MIG Commercial Real Estate
3001 West Beltline Hwy, #202
Madison, WI 53713
www.migllc.biz



SPACE FOR LEASE

3001 WEST BELTLINE HIGHWAY – MADISON, WI

FOURTH FLOOR
3,312 RSF



Brandi Zander
VP of Brokerage & Development
608-509-1002
bzander@migllc.biz

MIG Commercial Real Estate
3001 West Beltline Hwy, #202
Madison, WI 53713
www.migllc.biz