

**For Lease**

cresa



**521 East Washington Avenue**

Madison, WI 53703

## Property Snapshot

<b>Rent</b>	\$25/SF MG
<b>Size</b>	5,013 SF - 2 story <ul style="list-style-type: none"><li>• 3,345 SF 1st floor</li><li>• 1,668 SF 2nd floor</li></ul>
<b>Parking</b>	15 Stalls
<b>Year Built</b>	1982
<b>Term</b>	1 year



## Property Profile

- Excellent condition/visibility
- Fully gutted/remolded in 2020
- Walkable area of downtown Madison
- Hard corner with future redevelopment potential

### For More Information:



**TJ Blitz**

608.444.9440

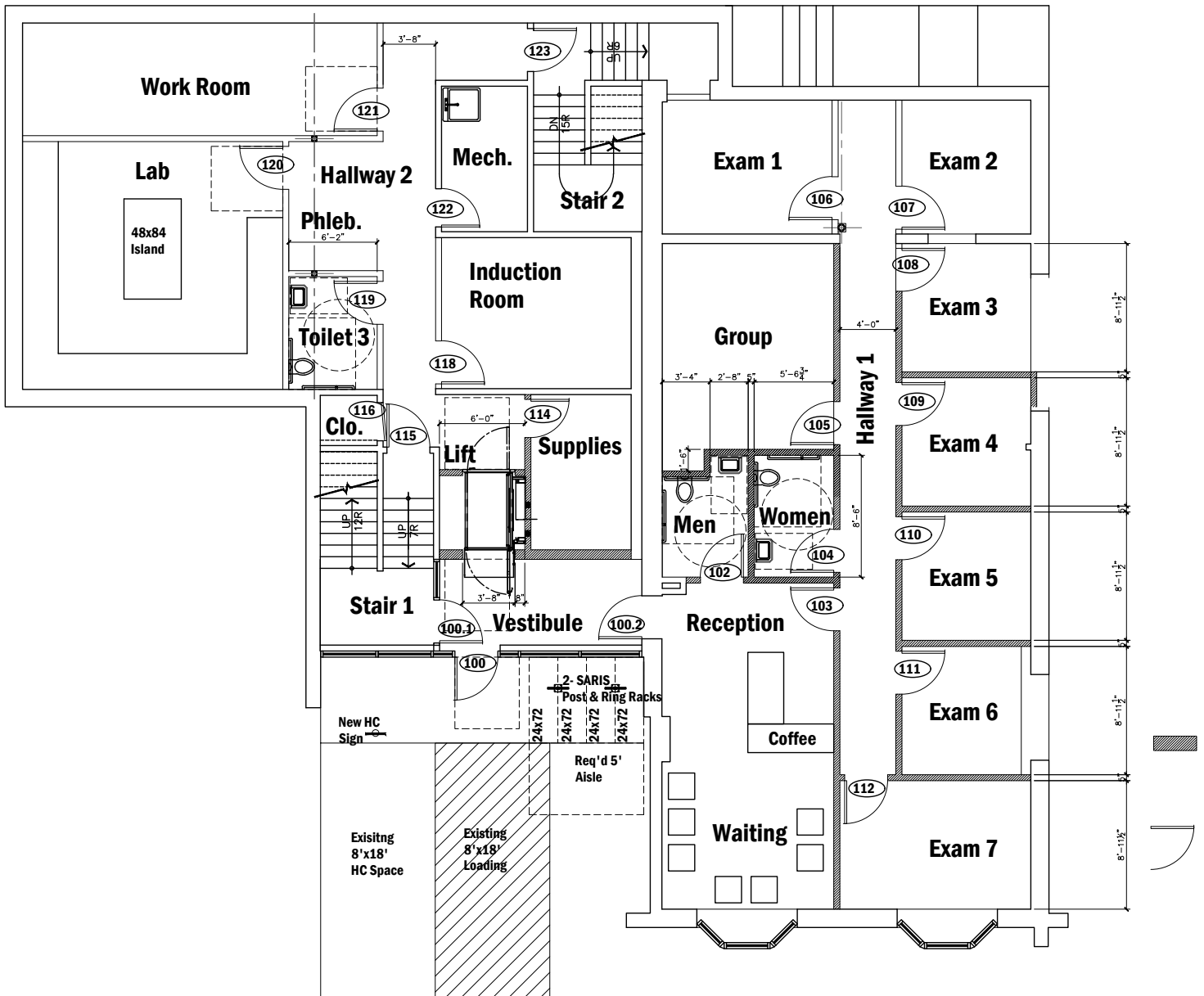
[tblitz@cresa.com](mailto:tblitz@cresa.com)

### Cresa Madison

613 Williamson Street, 210  
Madison WI 53703

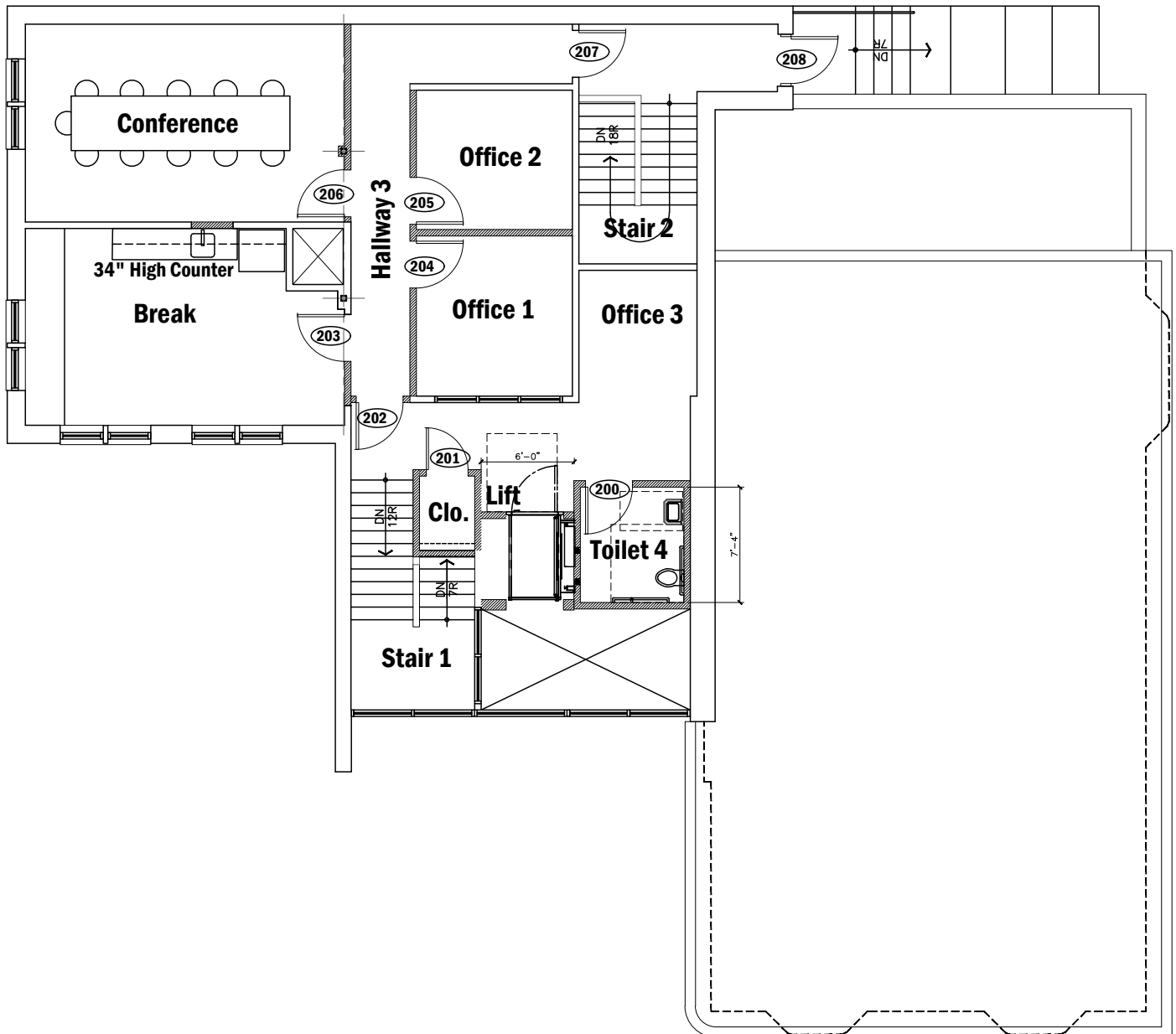
521 E Washington Ave  
Madison, WI 53703

## First Floor- Floor plan

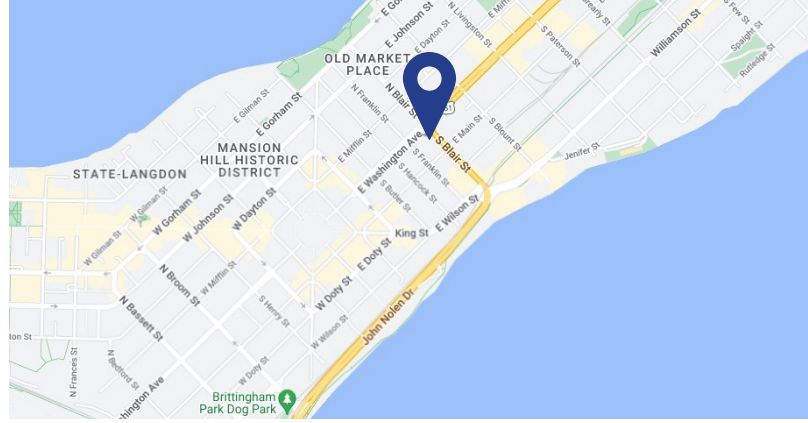


521 E Washington Ave  
Madison, WI 53703

## Second Floor - Floor plan







# 521 E. Washington Ave

## Madison, WI 53703



Cresa © 2019. All rights reserved. The information contained in this document has been obtained from sources believed reliable. While Cresa does not doubt its accuracy, Cresa has not verified it and makes no guarantee, warranty, or representation about it. It is your responsibility to independently confirm its accuracy and completeness. Any projections, opinions, assumptions or estimates used are for example only and do not represent the current or future performance of the property. The value of this transaction to you depends on tax and other factors which should be evaluated by your tax, financial and legal advisors. You and your advisors should conduct a careful, independent investigation of the property to determine to your satisfaction the suitability of the property for your needs.