



EXCLUSIVE
REAL ESTATE GROUP

For Lease

2801 Coho St.
Madison, WI



Property Features

- Conveniently located just off Hwy 12/18/14/151
- Common area conference room
- Ample Parking
- Many restaurants & other services nearby

Available Space

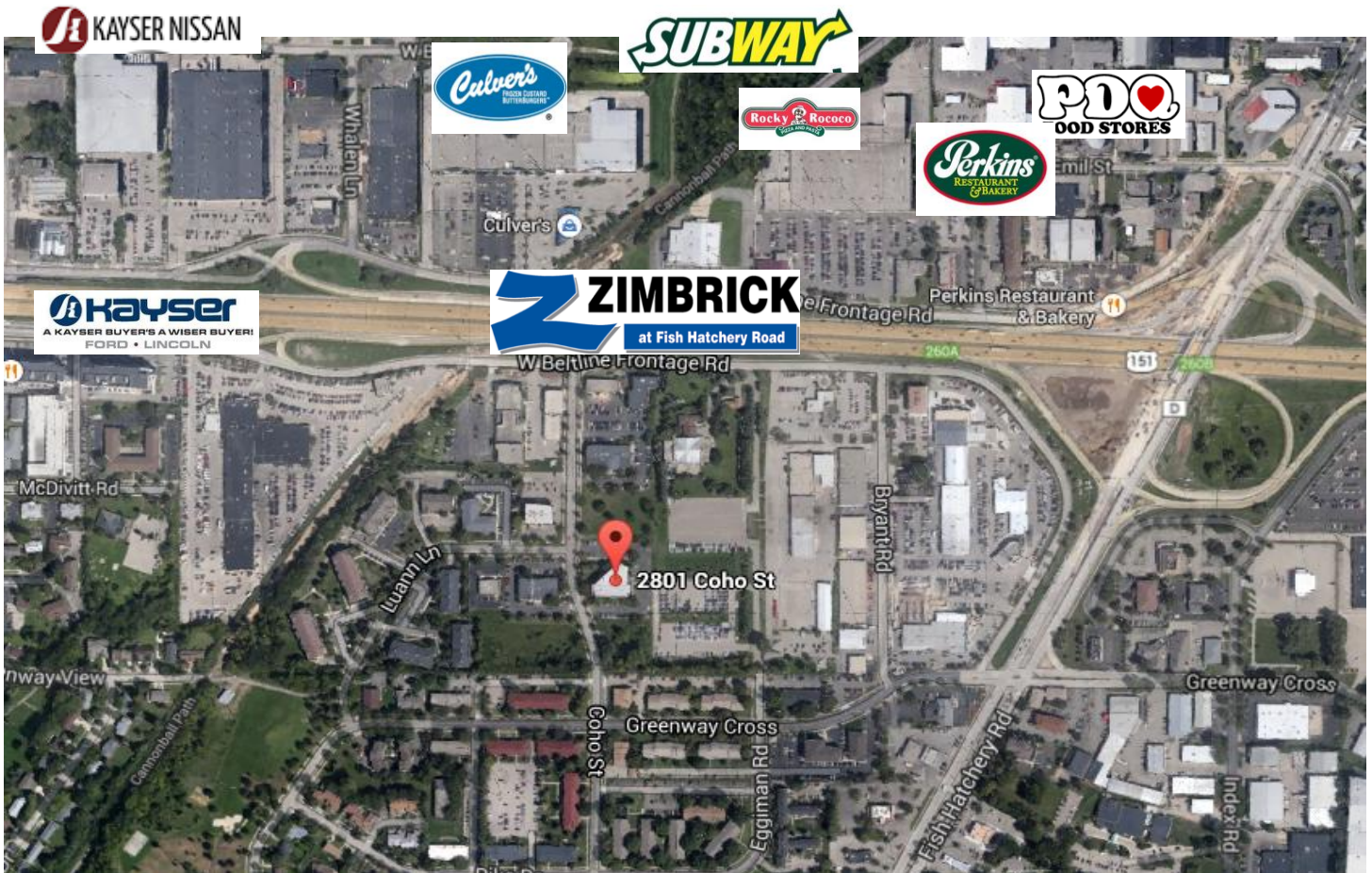
Suite 101 (Available May 1, 2023): 5,844 SF \$16.50 PSF

Suite 204 (Available): 1,236 SF \$16.50 PSF

Suite 303 (Available): 1,692 SF \$16.50 PSF

For more information:

Michael Brusca - Vice President of Brokerage • 608-698-4445 • mike@eregwi.com



Current Tenants

- HEMB Insurance Group
- Kramer Elkins & Watt, LLC
- Cartridge Savers
- United Cerebral Palsy
- World Financial Group
- Rape Crisis Center
- Interim Healthcare

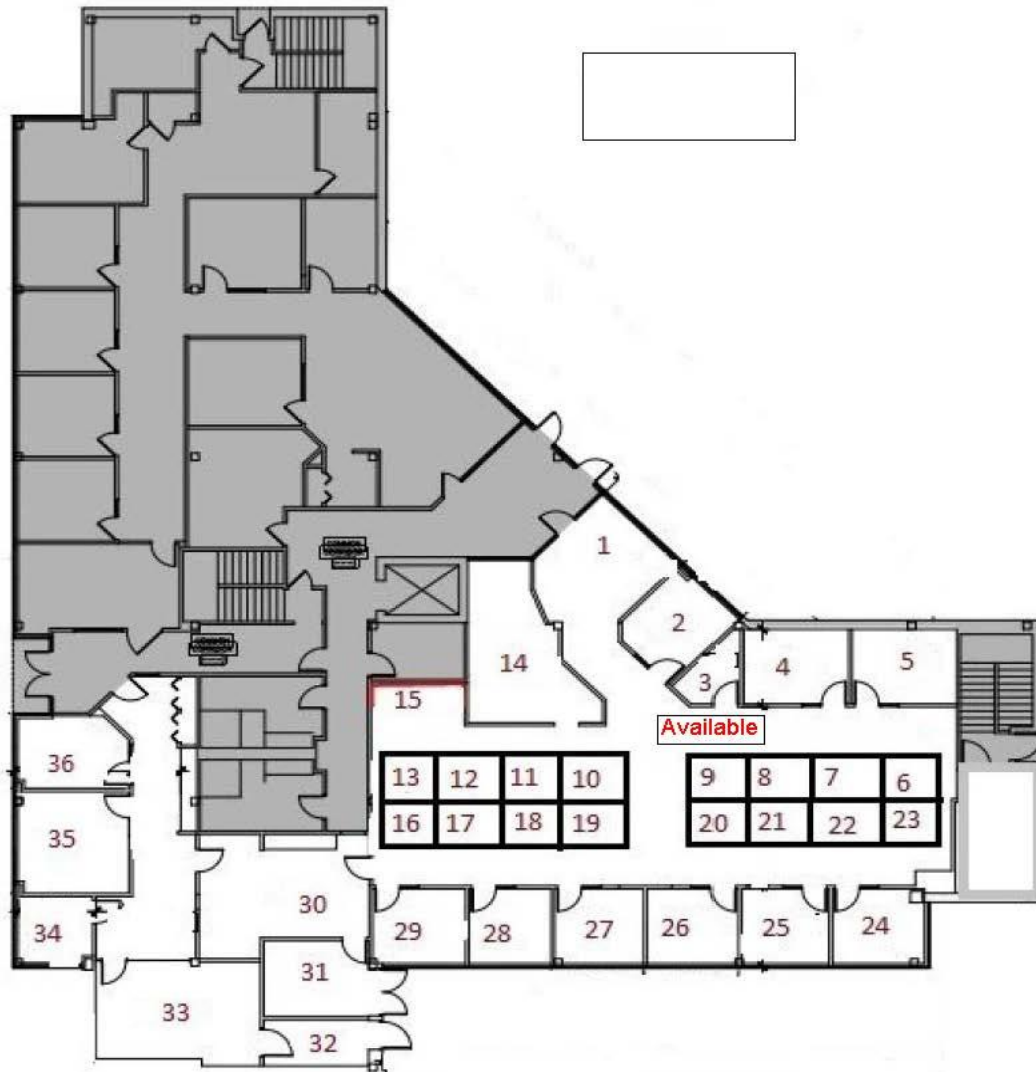
For more information:

Michael Brusca - Vice President of Brokerage • 608-698-4445 • mike@eregwi.com



EXCLUSIVE
REAL ESTATE GROUP

Suite 101
5,844 sq. ft.



For more information:

Michael Brusca - Vice President of Brokerage • 608-698-4445 • mike@eregwi.com



The floor plan shows the following rooms and features:

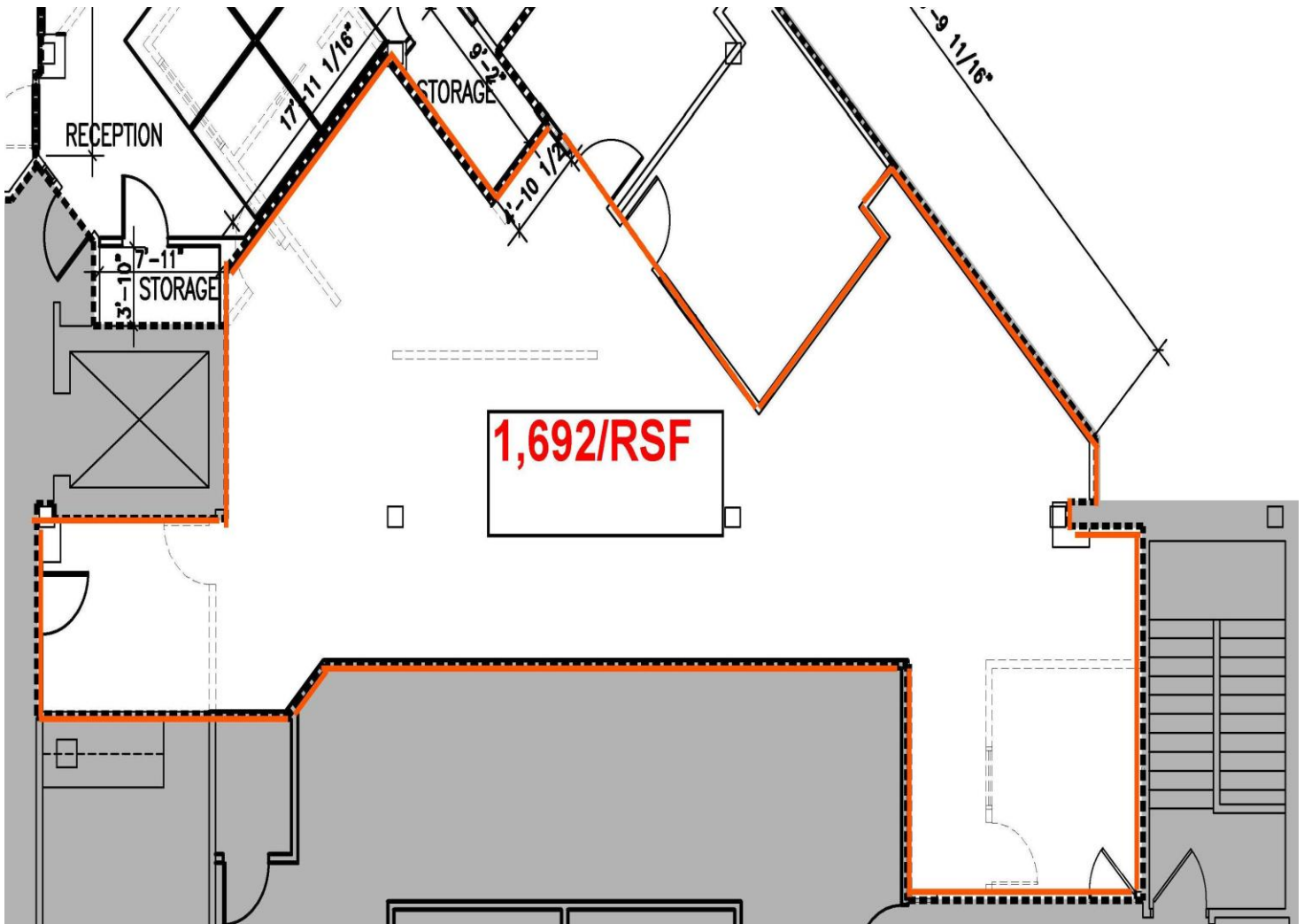
- TOUCHDOWN** (HF-35/2): Located at the top center, featuring two chairs and a table.
- OFFICE** (9-27/42): Located on the left side, featuring a desk, chair, and filing cabinets.
- DATA** (24/42): Located on the right side, featuring a data rack and a coffee machine.
- STOR** (36/62): Located on the right side, featuring shelving and lockers.
- LOCKERS** (24/42): Located on the right side, featuring a row of lockers.
- VESTIBULE** (24/42): Located at the bottom right, featuring a desk and chair.
- DSA** (24/42): Located at the bottom center, featuring a desk and chair.
- MFD** (24/42): Located at the bottom left, featuring a desk and chair.
- CONFERENCE** (24/42): Located at the bottom left, featuring a large oval table and chairs.

Dimensions are provided for each room, such as 24/42, 36/62, and 60/42. The plan also includes various furniture items like desks, chairs, tables, and lockers.

Michael Brusca - Vice President of Brokerage • 608-698-4445 • mike@eregwi.com



Suite 303
1,692 sq. ft.



For more information:

Michael Brusca - Vice President of Brokerage • 608-698-4445 • mike@eregwi.com

**WISCONSIN REALTORS®
ASSOCIATION**
4801 Forest Run Road
Madison, WI 53704

**BROKER DISCLOSURE TO
NON-RESIDENTIAL
CUSTOMERS**

Prior to negotiating on your behalf the Broker must provide you the following disclosure statement:

BROKER DISCLOSURE TO CUSTOMERS

ker is either an agent of another party in the transaction or a subagent of another broker who is the agent of another party in the transaction. The broker, or a salesperson acting on behalf of the broker, may provide brokerage services to you. Whenever the broker is providing brokerage services to you, the broker owes you, the customer, the following duties:

- The duty to provide brokerage services to you fairly and honestly.
- The duty to exercise reasonable skill and care in providing brokerage services to you.
- The duty to provide you with accurate information about market conditions with a reasonable time if you request it, unless disclosure of the information is prohibited by law.
- The duty to disclose to you in writing certain material adverse facts about a property, unless disclosure of the information is prohibited by law (**See Lines 47-55**).
- The duty to protect your confidentiality. Unless the law requires it, the broker will not disclose your confidential information or the confidential information of other parties (**See Lines 22-39**).
- The duty to safeguard trust funds and other property the broker holds.
- The duty, when negotiating, to present contract proposals in an objective and unbiased manner and disclose the advantages and disadvantages of the proposals.

Please review this information carefully. A broker or salesperson can answer your questions about brokerage services, but if you need legal advice, tax advice, or a professional home inspection, contact an attorney, tax advisor, or home inspector. This disclosure is required by section 452.135 of the Wisconsin statutes and is for information only. It is a plain-language summary of A broker's duties to a customer under section 452.133 (1) of the Wisconsin statutes.

CONFIDENTIALITY NOTICE TO CUSTOMERS

INFORMATION GIVEN TO BROKER IN CONFIDENCE, OR ANY INFORMATION OBTAINED BY BROKER THAT HE OR SHE KNOWS A REASONABLE PERSON WOULD WANT TO BE KEPT CONFIDENTIAL, UNLESS THE INFORMATION MUST BE DISCLOSED BY LAW OR YOU AUTHORIZE THE BROKER TO DISCLOSE PARTICULAR INFORMATION. A BROKER SHALL CONTINUE TO KEEP THE INFORMATION CONFIDENTIAL AFTER BROKER IS NO LONGER PROVIDING BROKERAGE SERVICES TO YOU.

THE FOLLOWING INFORMATION IS REQUIRED TO BE DISCLOSED BY LAW:

1. MATERIAL ADVERSE FACTS, AS DEFINED IN SECTION 452.01 (5g) OF THE WISCONSIN STATUTES (**SEE LINES 47-55**).
 2. ANY FACTS KNOWN BY THE BROKER THAT CONTRADICT ANY INFORMATION INCLUDED IN A WRITTEN INSPECTION REPORT ON THE PROPERTY OR REAL ESTATE THAT IS THE SUBJECT OF THE TRANSACTION.
- TO ENSURE THAT THE BROKER IS AWARE OF WHAT SPECIFIC INFORMATION YOU CONSIDER CONFIDENTIAL, YOU MAY LIST THAT INFORMATION BELOW (**SEE LINES 35-36**). AT A LATER TIME, YOU MAY ALSO PROVIDE THE BROKER WITH OTHER INFORMATION YOU CONSIDER TO BE CONFIDENTIAL.

CONFIDENTIAL INFORMATION: _____

NON-CONFIDENTIAL INFORMATION (The following information may be disclosed by Broker): _____

(INSERT INFORMATION YOU AUTHORIZE THE BROKER TO DISCLOSE SUCH AS FINANCIAL QUALIFICATION INFORMATION.)

CONSENT TO TELEPHONE SOLICITATION

and settlement service providers (for example, a mortgage company or title company) may contact you regarding issues, goods and services related to the real estate transaction until I/we withdraw this consent in writing. **List Home/Cell Numbers:** _____

SEX OFFENDER REGISTRY

Notice: You may obtain information about the sex offender registry and persons registered with the registry by contacting the _____ or by phone at 608-240-5830.

DEFINITION OF MATERIAL ADVERSE FACTS

§ 452.01 (5g) as an adverse fact that a party indicates is of such significance, or that is generally recognized by a competent licensee as being of such significance to a reasonable party, that it affects or would affect the party's decision to enter into a contract or agreement concerning a transaction or affects or would affect the party's decision about the terms of such a contract or agreement. An "adverse fact" is defined in Wis. Stat. § 452.01 (1e) as a condition or occurrence that a competent licensee generally recognizes will significantly and adversely affect the value of the property, significantly reduce the structural integrity of improvements to real estate, or present a significant health risk to occupants of the property; or information that indicates that a party to a transaction is not able to or does not intend to meet his or her obligations under a contract or agreement made concerning the transaction.