

Office Space in  
Premier Location on  
Capitol Square



## Available for **SUBLEASE**

- Outstanding Capitol & lake views
- Convenient visitor parking
- On-site bank and coffee shop
- Locker Room with showers
- High End, Class A finishes & furniture throughout

### 25 West Main

25 W. Main Street, Madison, WI 53703

#### Lease Terms

<b>Total Available:</b>	20,219 RSF
<b>Expiration:</b>	May 31, 2030

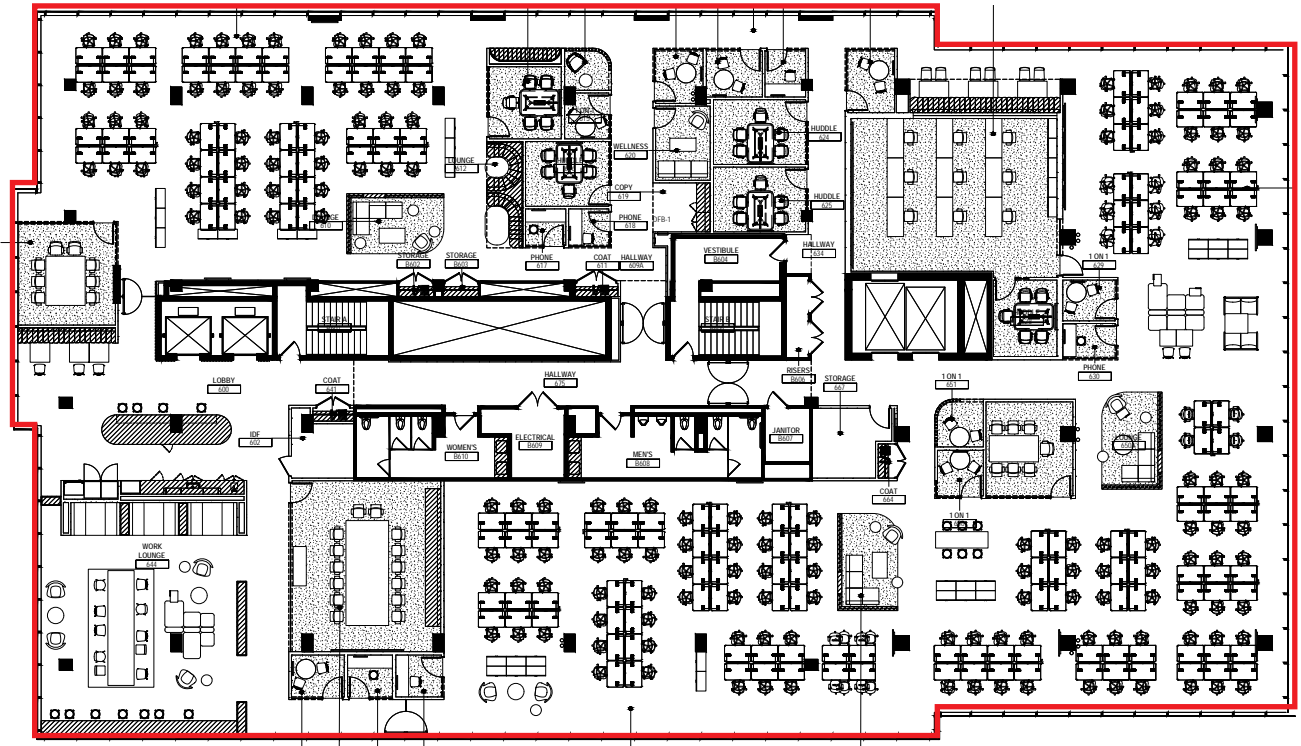
#### Building Details

<b>Building Size:</b>	198,000 SF
<b>Floors:</b>	8
<b>Class:</b>	A
<b>Built / Renovated:</b>	1963 / 2017
<b>Parking:</b>	Ample

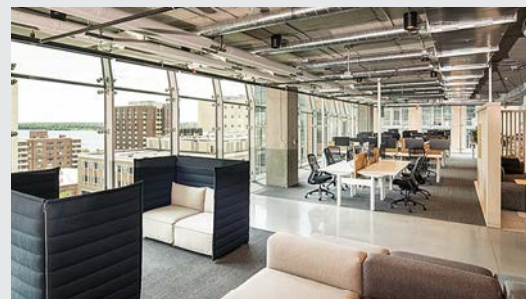


Michael Streit,  
Executive Vice President  
direct + 1 414 944 2104  
[michael.streit@am.jll.com](mailto:michael.streit@am.jll.com)

# 6TH FLOOR 20,219 RSF



## Interior Photos





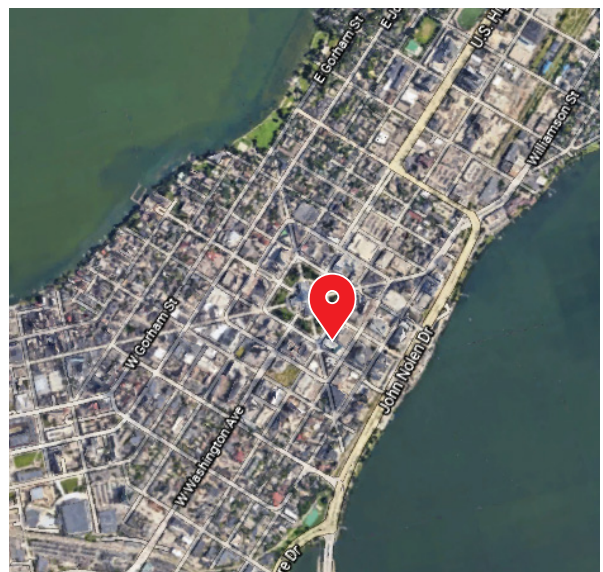
# Sublease

## 25 West Main

25 W. Main Street, Madison, WI 53703



Michael Streit,  
Executive Vice President  
direct + 1 414 944 2104  
[michael.streit@am.jll.com](mailto:michael.streit@am.jll.com)



### DISCLAIMER

disclaimer: Although information has been obtained from sources deemed reliable, Owner, Jones Lang LaSalle, and/or their representatives, brokers or agents make no guarantees as to the accuracy of the information contained herein, and offer the Property without express or implied warranties of any kind. The Property may be withdrawn without notice. If the recipient of this information has signed a confidentiality agreement regarding this matter, this information is subject to the terms of that agreement. ©2023. Jones Lang LaSalle. All rights reserved.