



# CLASS-A CENTRAL BELTLINE OFFICE

3113 WEST BELTLINE HIGHWAY – MADISON, WI

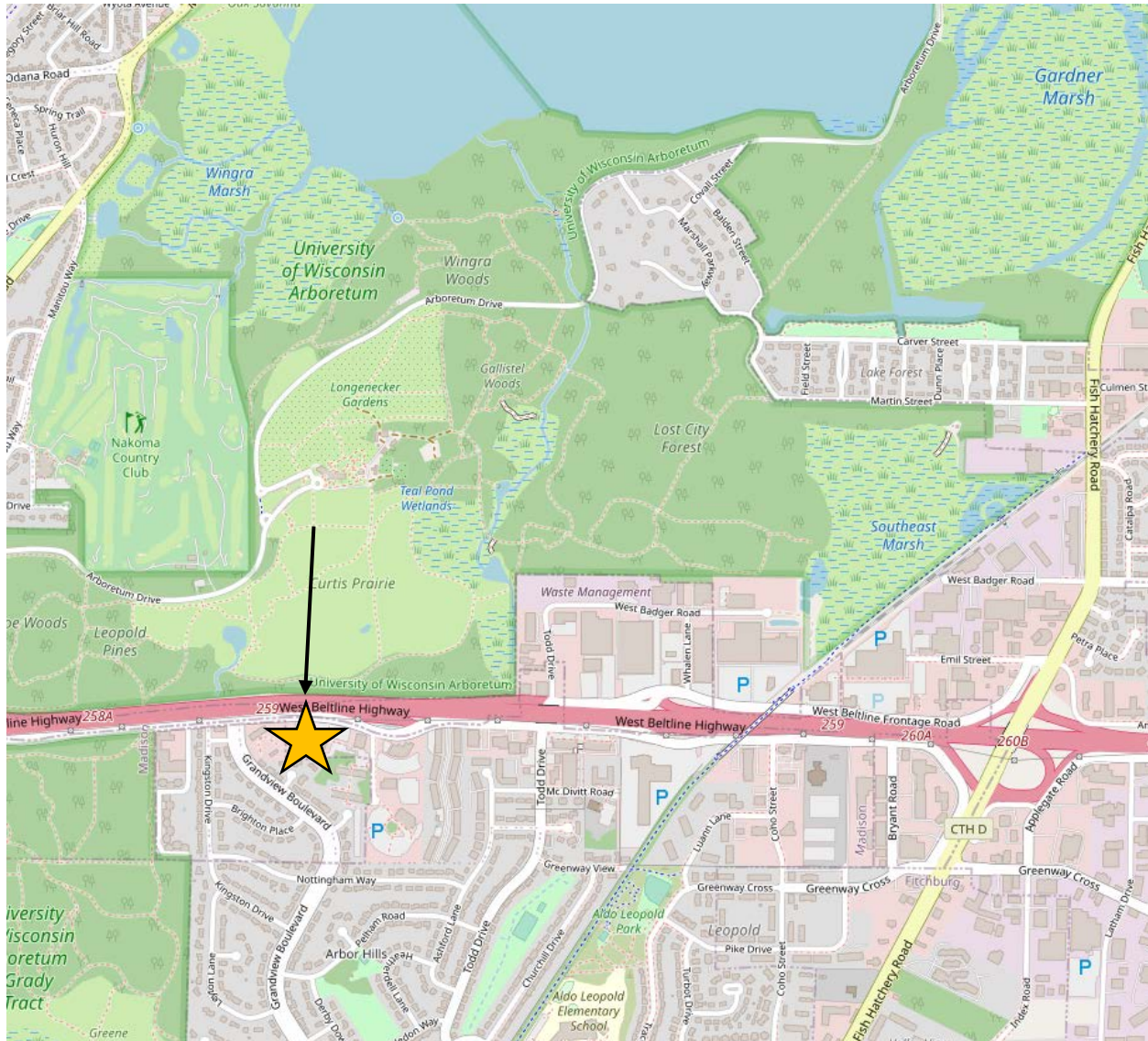
BUILDING	This three-story building boasts lots of character while still being freshly remodeled.
LOCATION	Conveniently located on the central beltline offering an approximately 10-minute commute to East, West, or Downtown neighborhoods.
AMENITIES	Expansive free parking lot. Electrified building signage is available.

Brandi Zander  
VP of Brokerage & Development  
608-509-1002  
bzander@migllc.biz

MIG Commercial Real Estate  
3001 West Beltline Hwy, #202  
Madison, WI 53713  
www.migllc.biz

# MAP VIEW

3113 WEST BELTLINE HIGHWAY – MADISON, WI



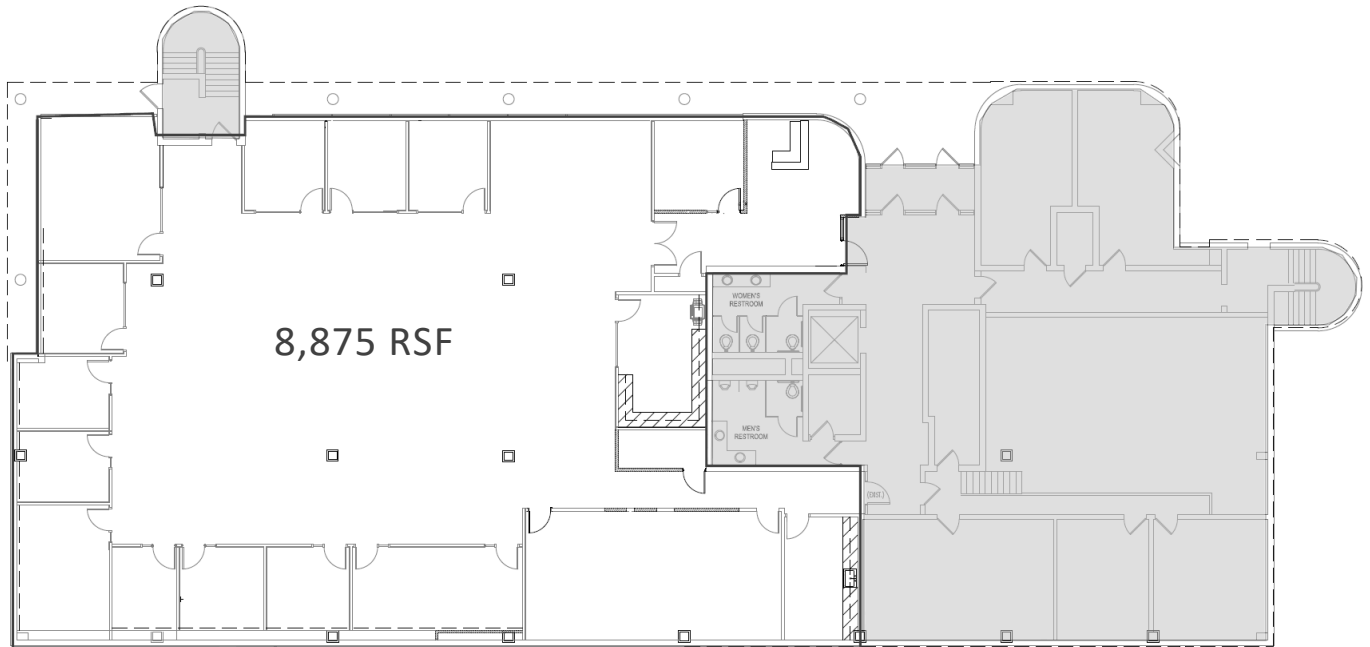
Brandi Zander  
VP of Brokerage & Development  
608-509-1002  
bzander@migllc.biz

MIG Commercial Real Estate  
3001 West Beltline Hwy, #202  
Madison, WI 53713  
www.migllc.biz



# FOR LEASE

## FIRST FLOOR

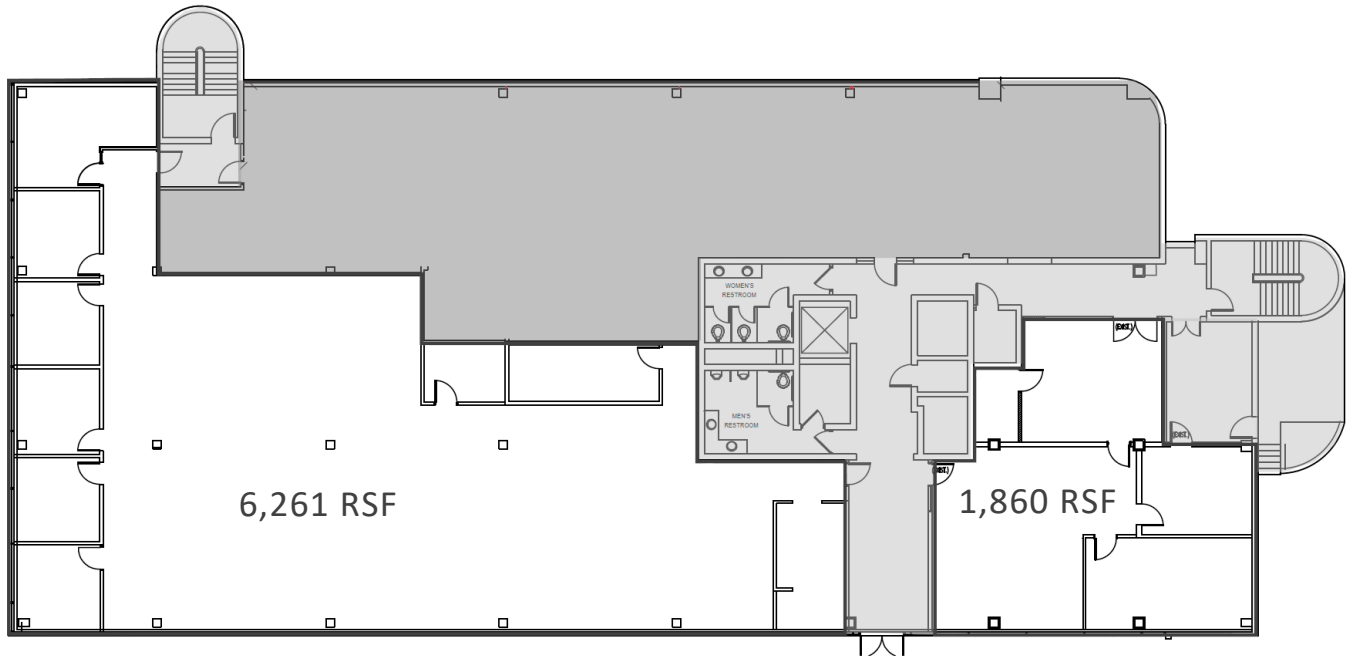


Brandi Zander  
VP of Brokerage & Development  
608-509-1002  
bzander@migllc.biz

MIG Commercial Real Estate  
3001 West Beltline Hwy, #202  
Madison, WI 53713  
www.migllc.biz

# FOR LEASE

## FLOOR TWO



Brandi Zander  
VP of Brokerage & Development  
608-509-1002  
bzander@migllc.biz

MIG Commercial Real Estate  
3001 West Beltline Hwy, #202  
Madison, WI 53713  
www.migllc.biz