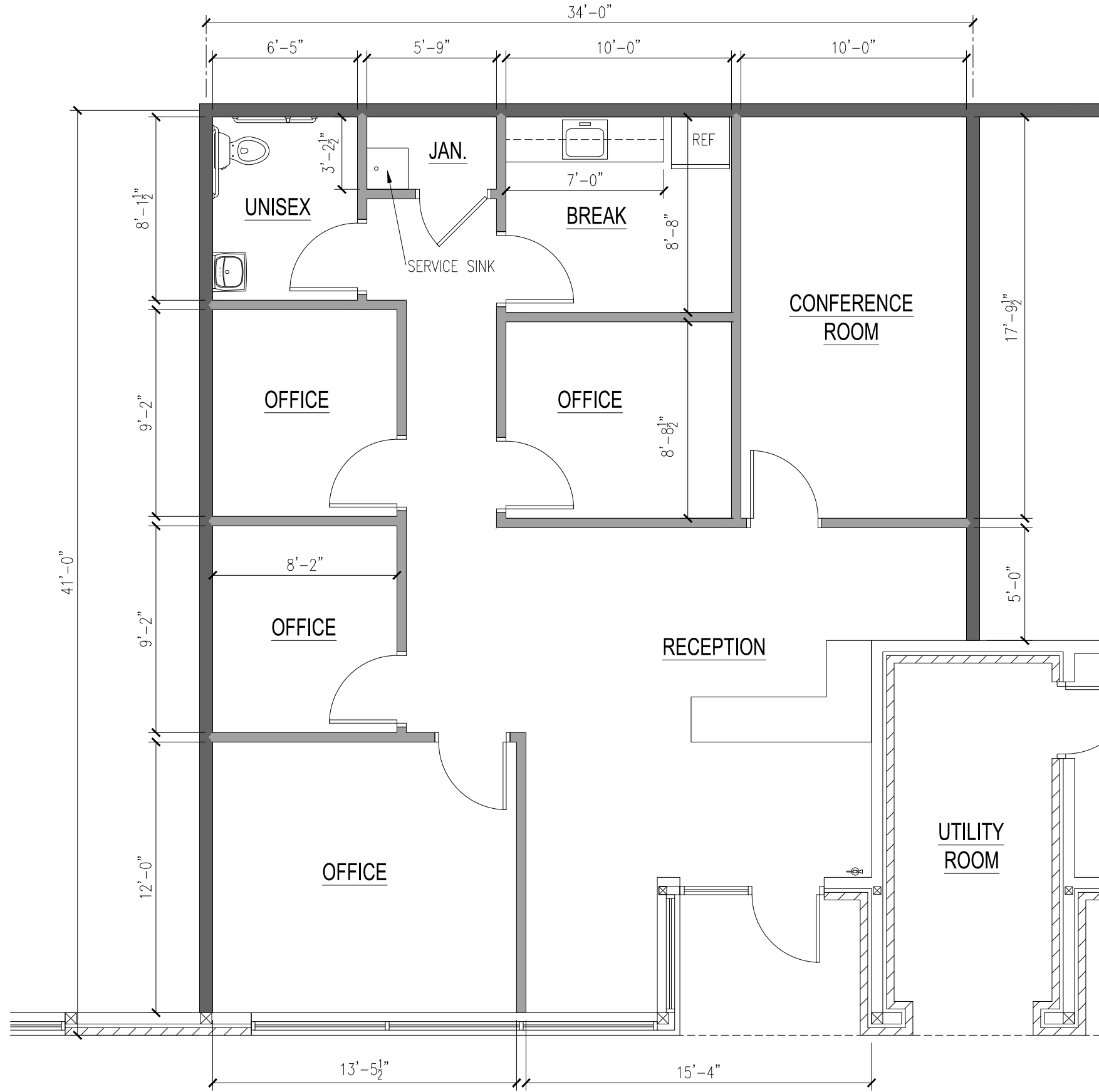
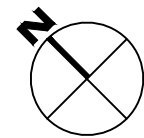



DISCLAIMER: THIS SPACE PLAN IS SUBJECT TO EXISTING FIELD CONDITIONS. THIS DRAWING IS PROPRIETARY AND THE EXCLUSIVE PROPERTY OF ST. JOHN PROPERTIES, INC. ANY DUPLICATIONS, DISTRIBUTION OR OTHER UNAUTHORIZED USE IS STRICTLY PROHIBITED. ALL FURNITURE AND APPLIANCES SHOWN ON PLAN ARE FOR VISUAL INFORMATION PURPOSES ONLY AND SHALL BE PROVIDED BY TENANT.



TOTAL: 1,316 SF



 ST. JOHN PROPERTIES <small>2000 PEWAUKEE RD., SUITE A WAUKESHA, WI 53186 262.524.0100</small>	
TENANT PROSPECT MADISON EAST BUSINESS CENTER 4602 S. BALTIMORE LN. STE 112 MADISON, WI 53718	
	ISSUED FOR
FLOOR PLAN	
72802	2.22.23
A-1	