



**Office for Lease**

**2010 Eastwood Drive  
Madison, WI**

**Key Commercial Real Estate LLC**

**608-729-1800 | [www.keycomre.com](http://www.keycomre.com)**

**Edward Jones**

**KENNEDY PLACE**  
2010-2020 EASTWOOD DRIVE

KRUPP GENERAL CONTRACTORS, LLC  
HILL, GLOWACKI, JAEGER, & HUGHES, LLP  
MICHAEL J KOBOVEC, DDS, SC  
KW2 - KNIPP & WATSON & WALLMAN  
EDWARD JONES INVESTMENTS  
FILAMENT GAMES



## TABLE OF CONTENTS

Property Details.....	Pg. 3
Location & Demographics .....	Pg. 4
Floor Plan - Suite 106.....	Pg. 5
Pictures - Suite 106 .....	Pg. 6
Floor Plan - Suite 300.....	Pg. 7
Pictures - Suite 300 .....	Pg. 8
Broker Disclosure .....	Pg. 9



### FOR DETAILED INFORMATION CONTACT:

Mallory Rekoske  
O: 608.729.1803  
C: 608.469.0384

[mreskoske@keycomre.com](mailto:mreskoske@keycomre.com)

Jenny Lisak  
O: 608.729.1808  
C: 608.513.5447

[jlisak@keycomre.com](mailto:jlisak@keycomre.com)





Suite 106



Suite 300

## Property Details

### OVERVIEW

Well-appointed office space available on Madison's near east side in the Schenk-Atwood neighborhood. The 1st floor space provides a private exterior entrance, modern finishes and an open collaborative feel. 3rd floor is a more traditional take on office space with 11 perimeter offices and open area for work stations. This space does have private elevator access and a private rooftop terrace. Both suites feature ample natural light.

### HIGHLIGHTS

- **Space Available:** 1,800-5,887 SF
- **Lease Rate:** \$18.25/SF NNN
- **NNN Estimate:** \$7.00/SF
- **Parking:** Underground available and some included
- **Available:** Now

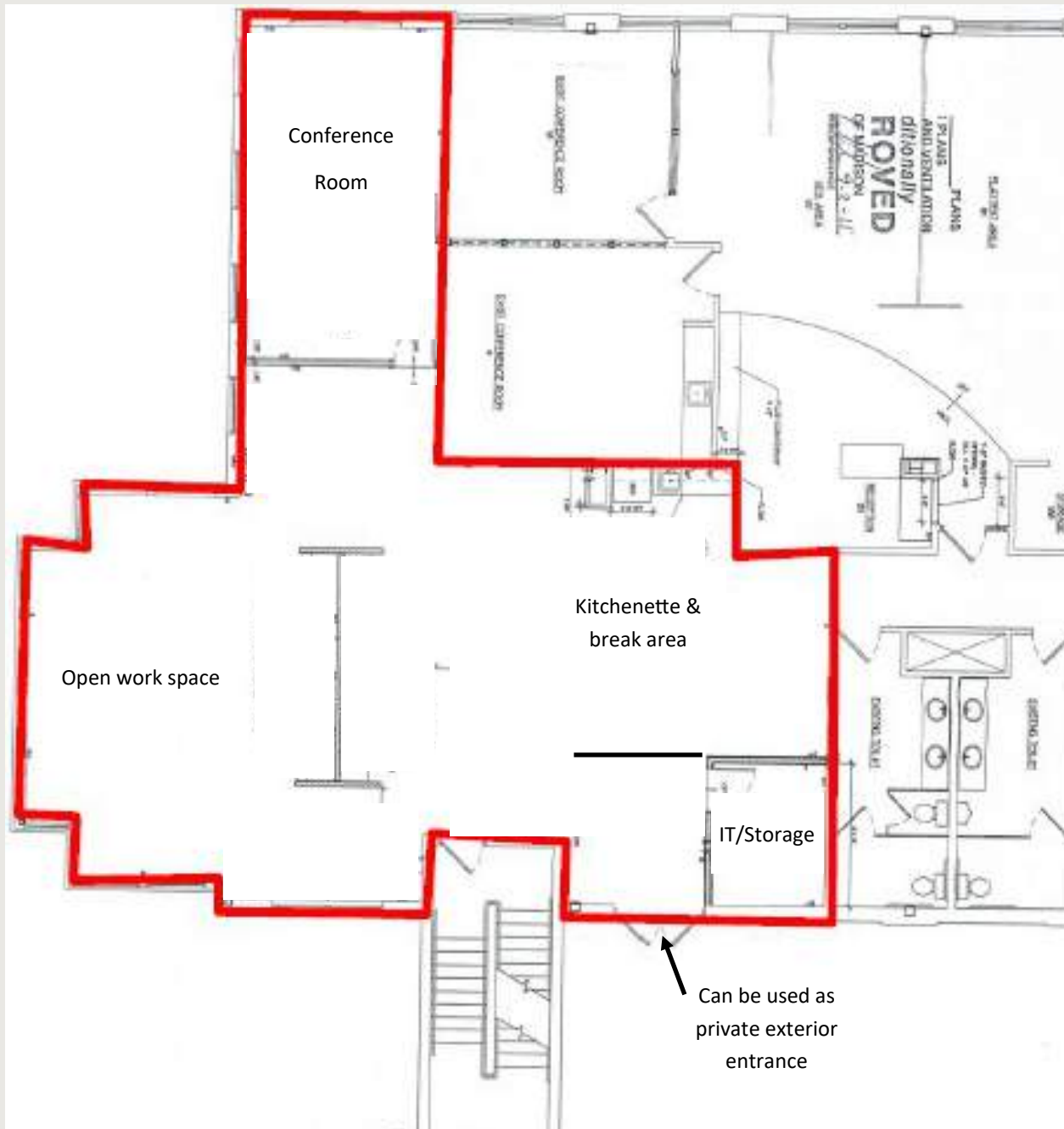




# Location & Demographics



## Floor Plan - Suite 106



- 2,531 sf
- Move in ready!
- Combination of polished concrete floors and new LVT flooring
- Fresh neutral paint throughout
- Large conference room
- Large built in double sided desk
- Ample natural light
- Private double door entrance to suite from exterior or door from common area can be used as main door
- Common restrooms



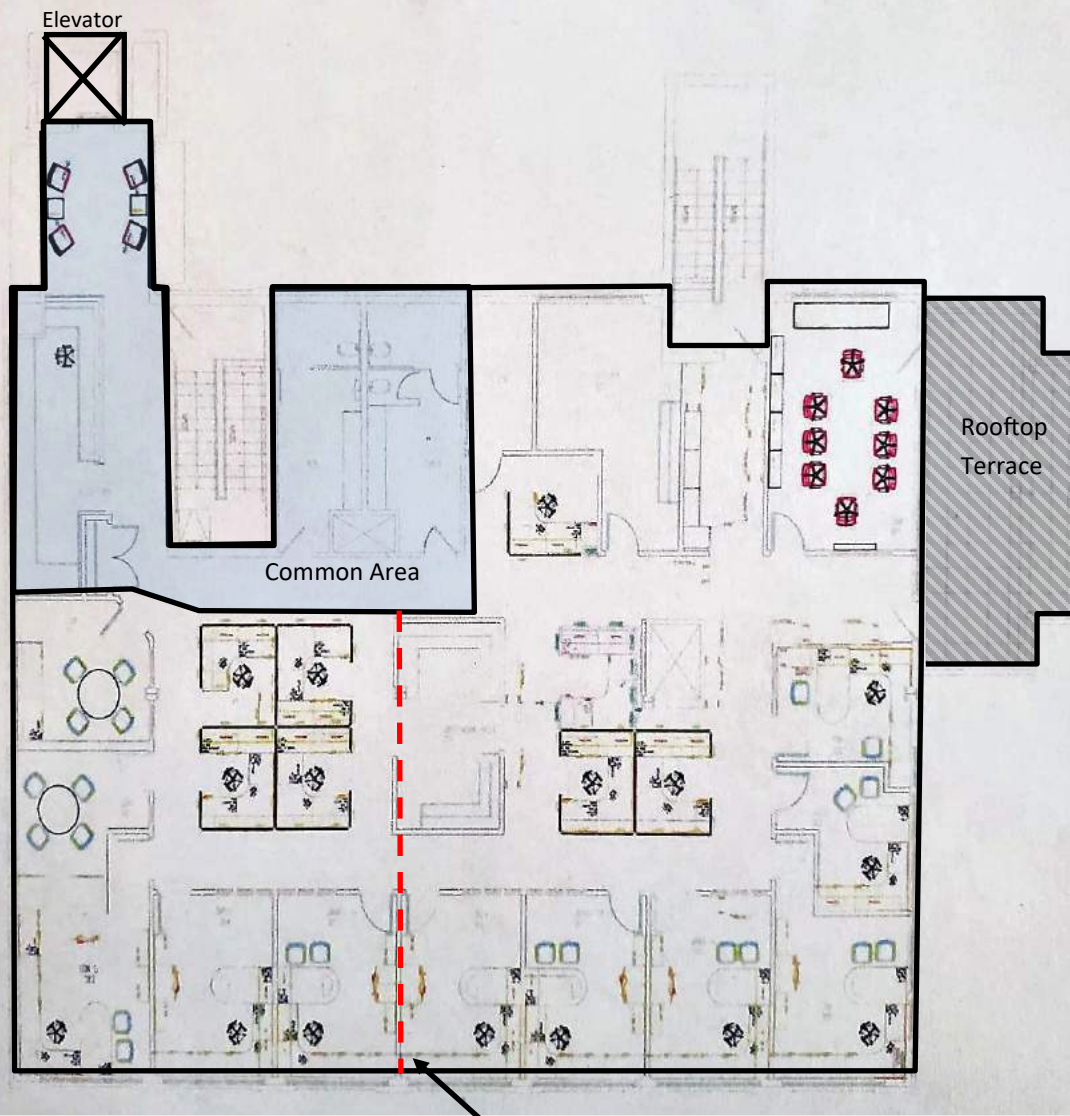


## Pictures - Suite 106



# Floor Plan - Suite 300

- 5,887 SF (can be demised)
- Full floor suite with private elevator access
- 11 private offices, all with windows
- Open work space
- Large conference room
- Kitchenette/Breal area
- High-end finishes
- Ample natural light
- Private rooftop terrace
- Underground parking
- Potential to be demised



Potential Demising Wall



## Pictures - Suite 300





## DISCLOSURE TO NON-RESIDENTIAL CUSTOMERS

1 Prior to negotiating on your behalf the brokerage firm, or an agent associated with the firm, must provide you the  
2 following disclosure statement:

3 **DISCLOSURE TO CUSTOMERS** You are a customer of the brokerage firm (hereinafter Firm). The Firm is either an agent  
4 of another party in the transaction or a subagent of another firm that is the agent of another party in the transaction. A  
5 broker or a salesperson acting on behalf of the Firm may provide brokerage services to you. Whenever the Firm is  
6 providing brokerage services to you, the Firm and its brokers and salespersons (hereinafter Agents) owe you, the  
7 customer, the following duties:

8 (a) The duty to provide brokerage services to you fairly and honestly.

9 (b) The duty to exercise reasonable skill and care in providing brokerage services to you.

10 (c) The duty to provide you with accurate information about market conditions within a reasonable time if you request  
11 it, unless disclosure of the information is prohibited by law.

12 (d) The duty to disclose to you in writing certain Material Adverse Facts about a property, unless disclosure of the  
13 information is prohibited by law (see lines 42-51).

14 (e) The duty to protect your confidentiality. Unless the law requires it, the Firm and its Agents will not disclose your  
15 confidential information or the confidential information of other parties (see lines 23-41).

16 (f) The duty to safeguard trust funds and other property held by the Firm or its Agents.

17 (g) The duty, when negotiating, to present contract proposals in an objective and unbiased manner and disclose the  
18 advantages and disadvantages of the proposals.

19 Please review this information carefully. An Agent of the Firm can answer your questions about brokerage services,  
20 but if you need legal advice, tax advice, or a professional home inspection, contact an attorney, tax advisor, or home  
21 inspector. This disclosure is required by section 452.135 of the Wisconsin statutes and is for information only. It is a  
22 plain-language summary of the duties owed to a customer under section 452.133(1) of the Wisconsin statutes.

23 **CONFIDENTIALITY NOTICE TO CUSTOMERS** The Firm and its Agents will keep confidential any information given to the  
24 Firm or its Agents in confidence, or any information obtained by the Firm and its Agents that a reasonable person  
25 would want to be kept confidential, unless the information must be disclosed by law or you authorize the Firm to  
26 disclose particular information. The Firm and its Agents shall continue to keep the information confidential after the  
27 Firm is no longer providing brokerage services to you.

28 The following information is required to be disclosed by law:

29 1. Material Adverse Facts, as defined in Wis. Stat. § 452.01(5g) (see lines 42-51).

30 2. Any facts known by the Firm or its Agents that contradict any information included in a written inspection  
31 report on the property or real estate that is the subject of the transaction.

32 To ensure that the Firm and its Agents are aware of what specific information you consider confidential, you may  
33 list that information below (see lines 35-41) or provide that information to the Firm or its Agents by other means. At a  
34 later time, you may also provide the Firm or its Agents with other information you consider to be confidential.

35 **CONFIDENTIAL INFORMATION:**

38 **NON-CONFIDENTIAL INFORMATION** (the following information may be disclosed by the Firm and its Agents):

42 **DEFINITION OF MATERIAL ADVERSE FACTS** *(Insert information you authorize to be disclosed, such as financial qualification information.)*

43 A "Material Adverse Fact" is defined in Wis. Stat. § 452.01(5g) as an Adverse Fact that a party indicates is of such  
44 significance, or that is generally recognized by a competent licensee as being of such significance to a reasonable  
45 party, that it affects or would affect the party's decision to enter into a contract or agreement concerning a transaction  
46 or affects or would affect the party's decision about the terms of such a contract or agreement.

47 An "Adverse Fact" is defined in Wis. Stat. § 452.01(1e) as a condition or occurrence that a competent licensee  
48 generally recognizes will significantly and adversely affect the value of the property, significantly reduce the structural  
49 integrity of improvements to real estate, or present a significant health risk to occupants of the property; or information  
50 that indicates that a party to a transaction is not able to or does not intend to meet his or her obligations under a  
51 contract or agreement made concerning the transaction.

52 **NOTICE ABOUT SEX OFFENDER REGISTRY** You may obtain information about the sex offender registry and persons  
53 registered with the registry by contacting the Wisconsin Department of Corrections on the Internet at  
54 <http://www.doc.wi.gov> or by telephone at 608-240-5830.

No representation is made as to the legal validity of any provision or the adequacy of any provision in any specific transaction.  
Copyright © 2016 by Wisconsin REALTORS® Association