

# 633 W MAIN ST

633 W MAIN STREET MADISON WI, 53703

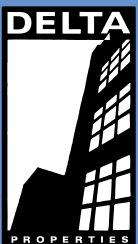


## PROPERTY FEATURES

**AVAILABLE:** 9/1/2023

**SIZE :** 7,804 SF

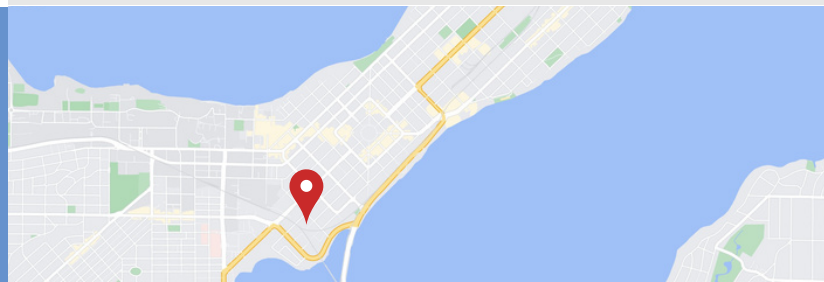
- SINGLE TENANT BUILDING
- 14 PRIVATE OFFICES
- 3 CONFERENCE ROOMS
- BARREL VAULTED CEILING, EXPOSED DUCT WORK, AND SKYLIGHTS
- 174 SURFACE PARKING STALLS
- IMMEDIATE BIKE PATH ACCESS
- OPERABLE WINDOWS
- ONSITE MANAGEMENT
- SHOWER FACILITIES
- MODIFICATIONS TO EXISTING LAYOUT ARE POSSIBLE
- EXTERIOR SIGNAGE



(608)251-3337

JUDY@DELTA-PROPERTIES.COM

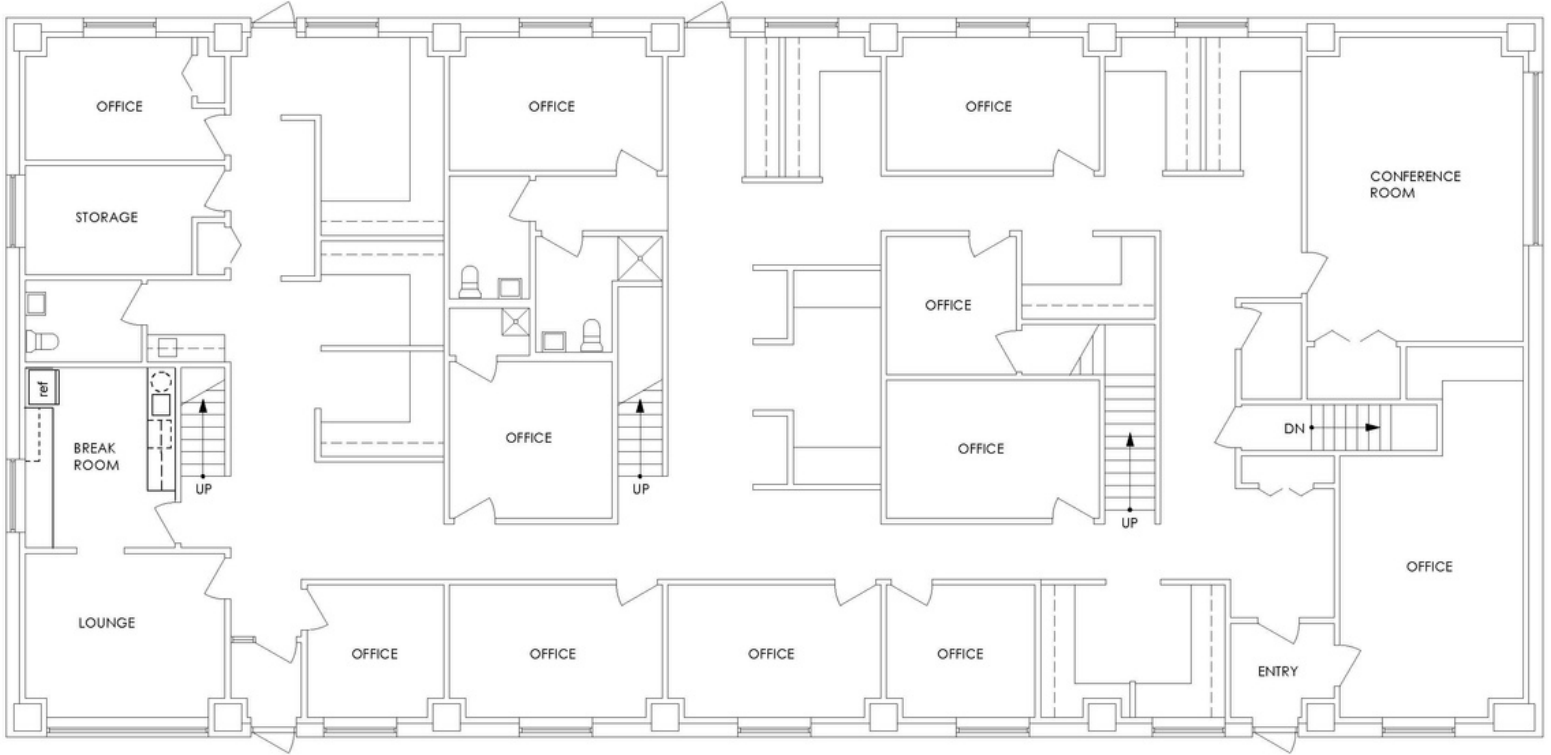
WWW.DELTA-PROPERTIES.COM



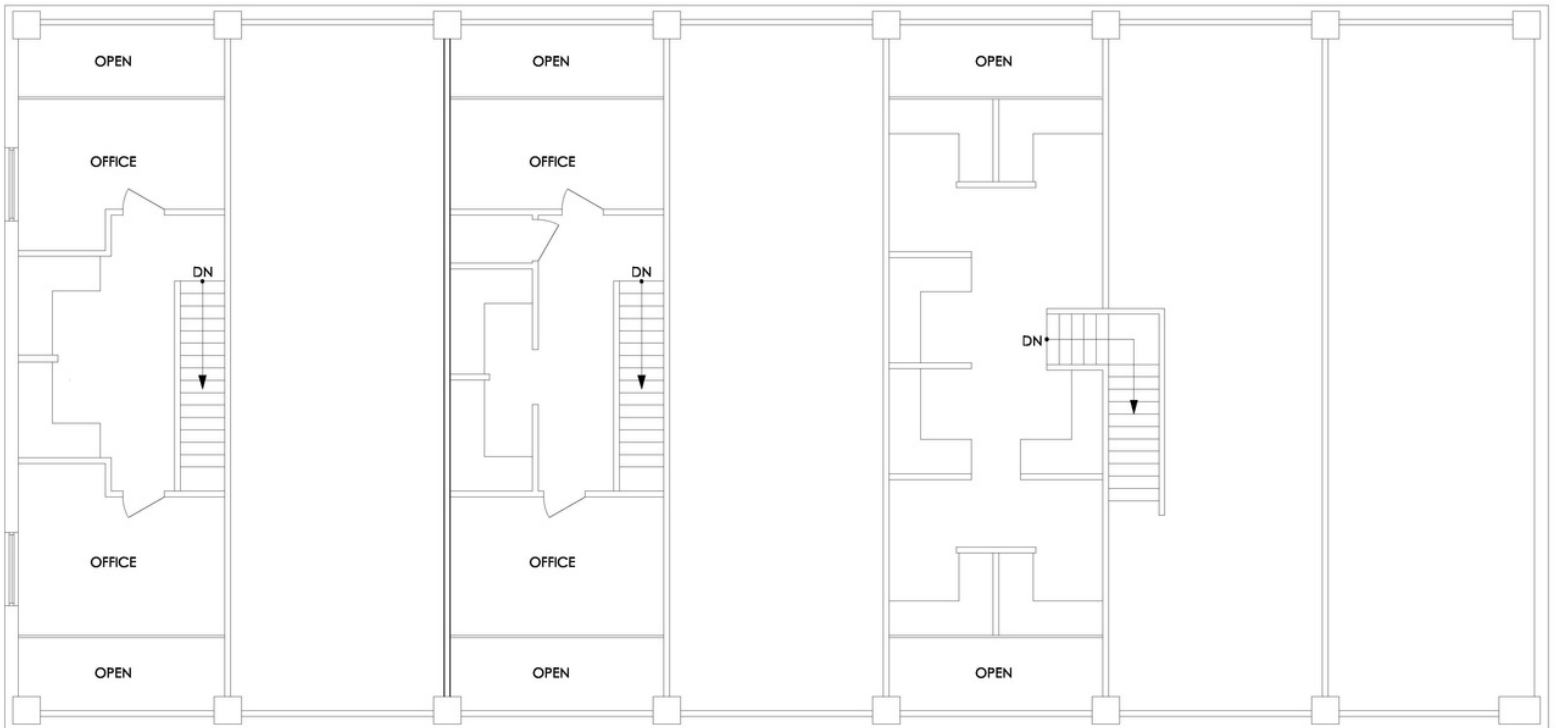
# 633 W MAIN ST

633 W MAIN STREET MADISON WI, 53703

## EXISTING FL-1



## EXISTING FL-2



(608)251-3337

JUDY@DELTA-PROPERTIES.COM

WWW.DELTA-PROPERTIES.COM

