



Office Space Available

300 – 4,000 SF
\$13.00 - \$15.00 FSG
+ Janitorial

Executive Suites
Starting at \$450/month

Lease Terms:
3-5 YEARS

6000 - 6400 Gisholt Street, 2000 Engel Street, Madison, WI

South Towne Office Park for Lease

Centrally located, professionally managed office suites with easy access to the greater Madison area.

- 20 minutes from Dane County Airport
- Ten minutes to downtown Madison
- Immediate access to Highway I2/I8

Features:

- Beautifully maintained greenspace and landscaping
- Ample parking
- Natural light throughout the building
- Shared conference room and vending
- Renovated lobbies, common areas, and bathrooms
- Gross lease rates include everything except phone, data, and in suite janitorial

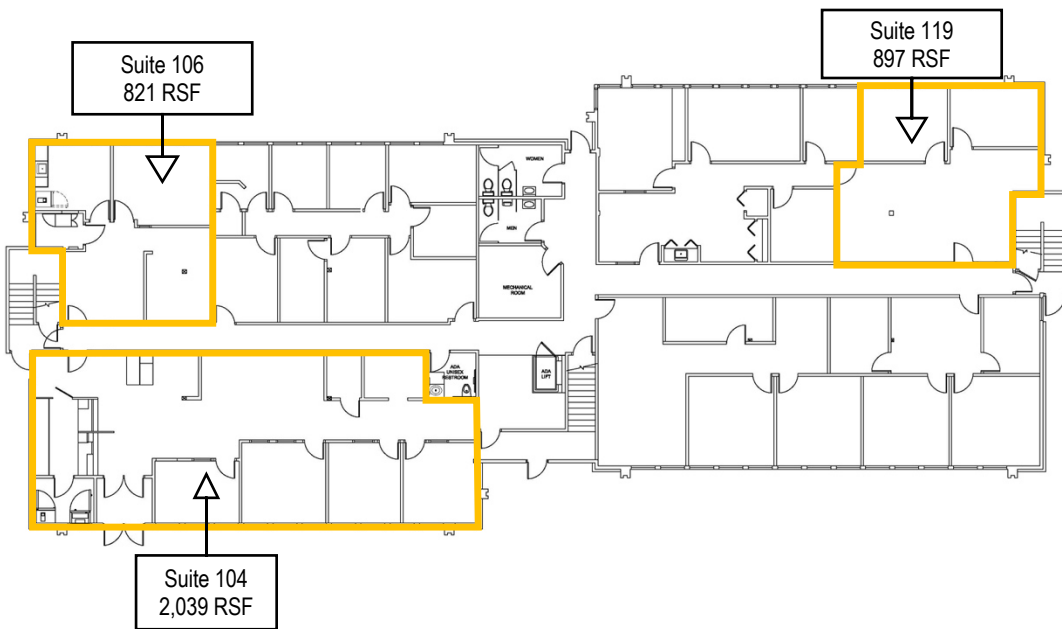


The information presented herein is based on estimates and assumptions and is presented for illustration purposes only. No representations, warranties, or guarantees of any kind are made.

Teri Bell | 608.354.2808 | teri@kotherep.com

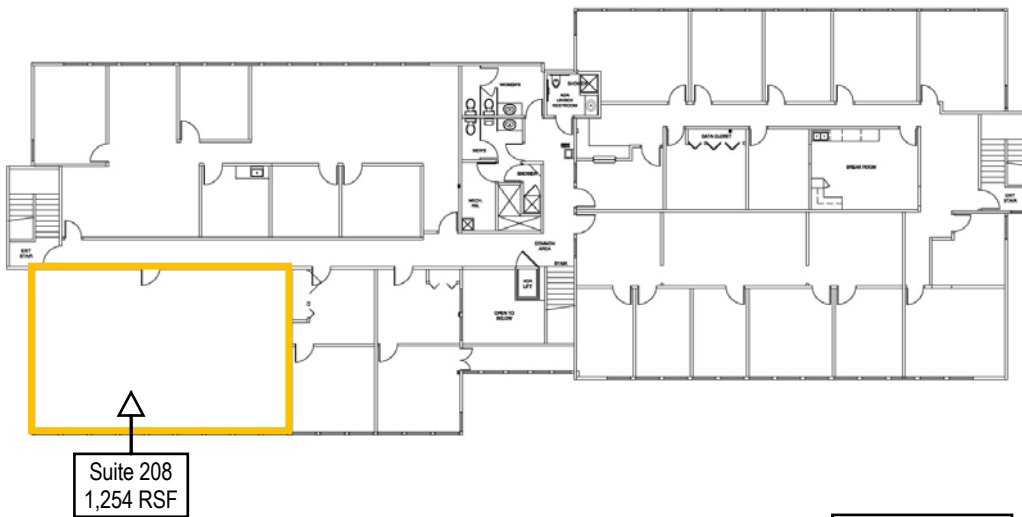
KOTHE
REAL ESTATE PARTNERS





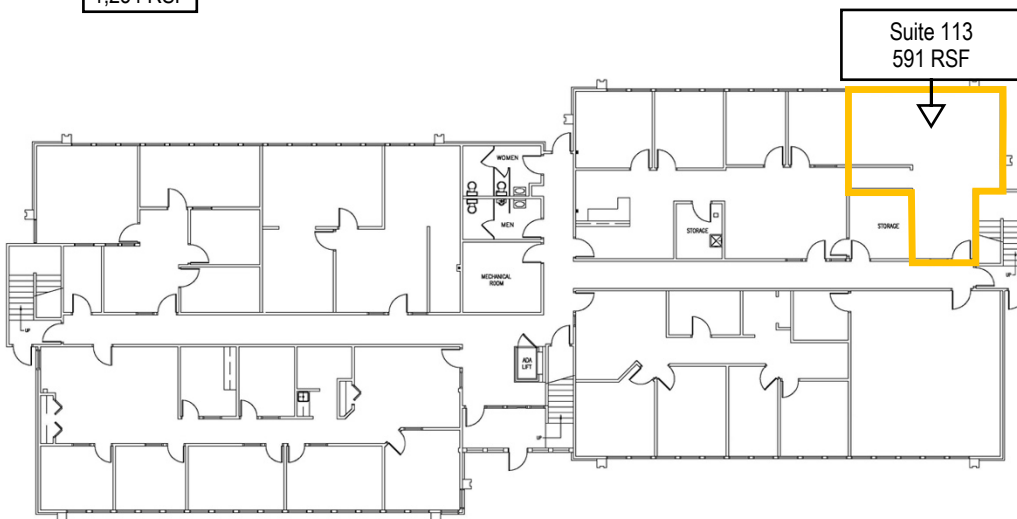
6000 Gisholt Street

1st Floor



6000 Gisholt Street

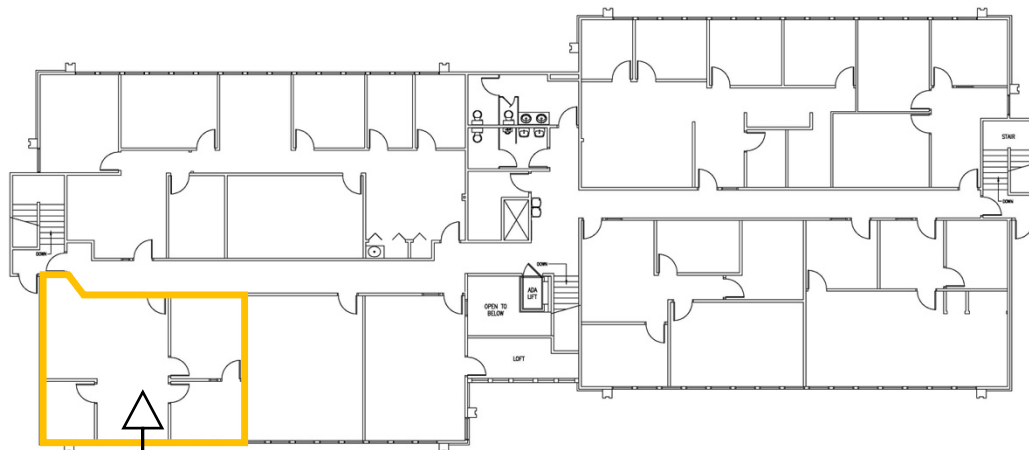
2nd Floor



6200 Gisholt Street

1st Floor

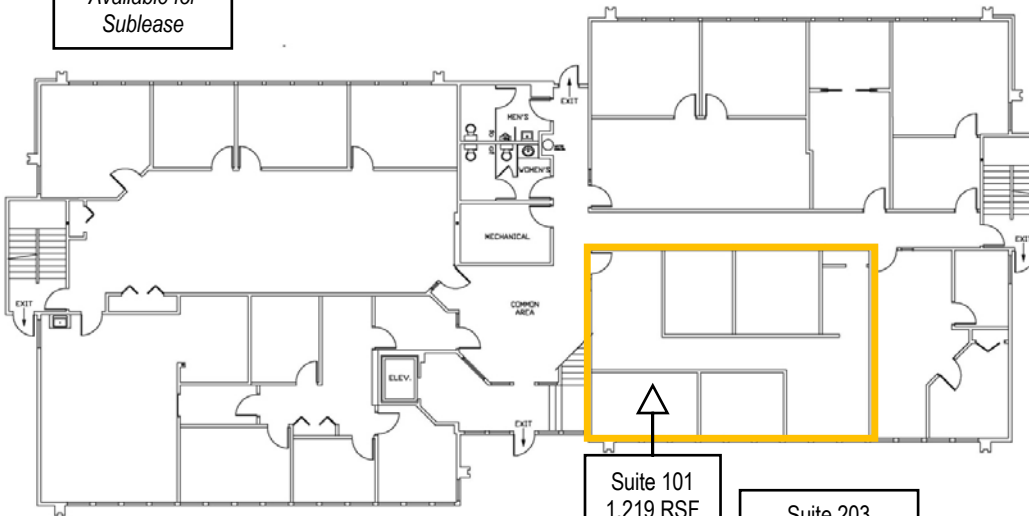




6200 Gisholt Street

2nd Floor

Suite 204
903 RSF
Available for
Sublease

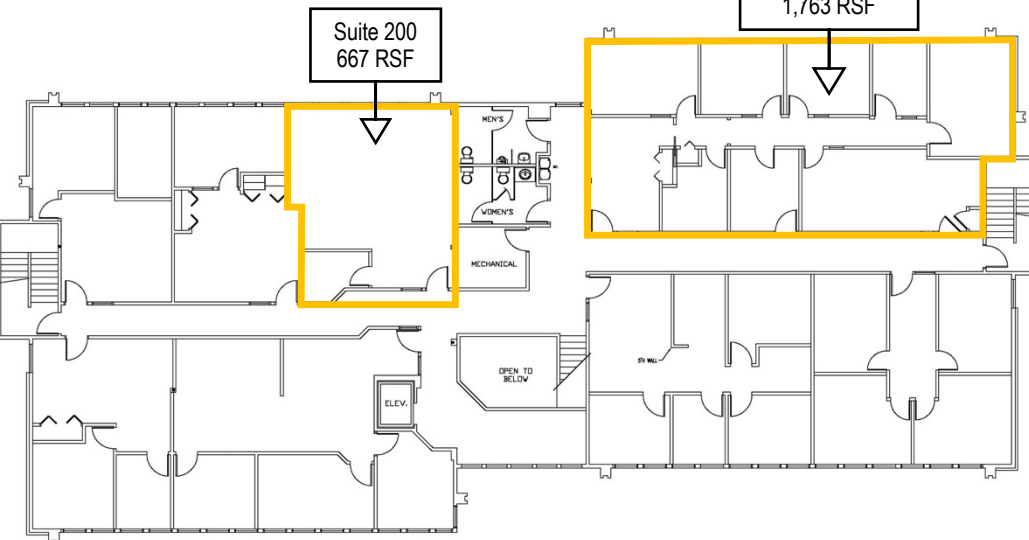


6400 Gisholt Street

1st Floor

Suite 101
1,219 RSF

Suite 203
1,763 RSF



Suite 200
667 RSF

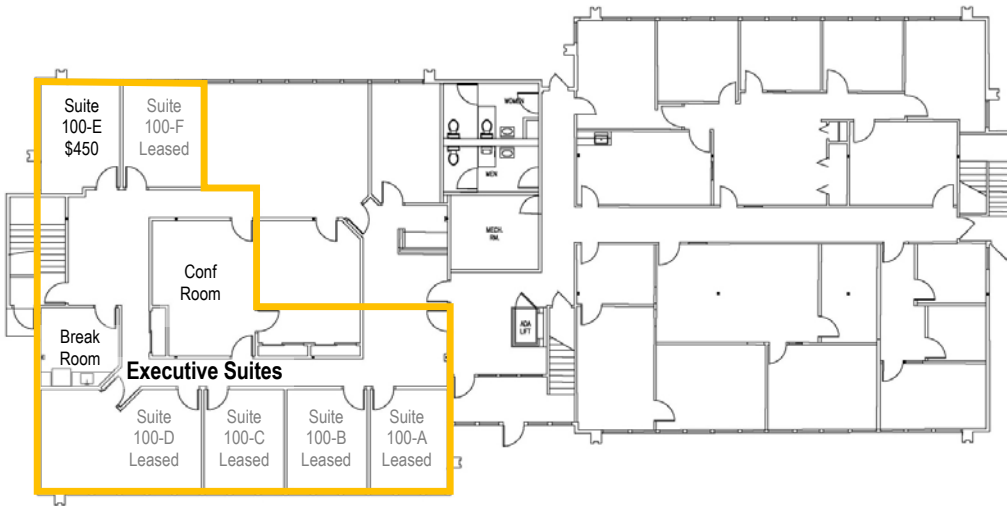
6400 Gisholt Street

2nd Floor

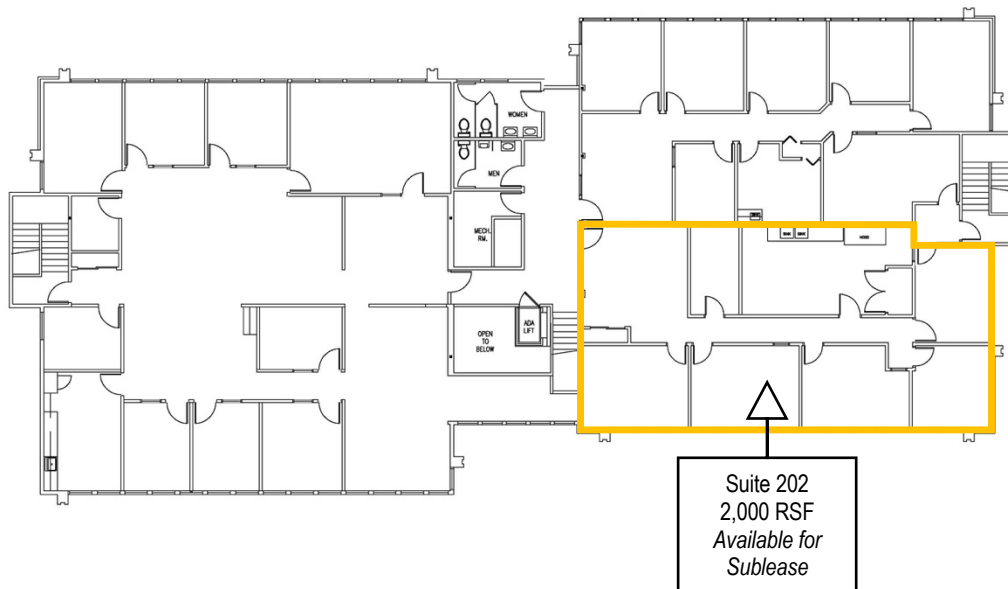


2000 Engel Street

1st Floor



2000 Engel Street
2nd Floor



WISCONSIN REALTORS® ASSOCIATION
4801 Forest Run Road, Madison, WI 53704

Kothe Real Estate Partners LLC
Effective July 1, 2016

DISCLOSURE TO NON-RESIDENTIAL CUSTOMERS

1 Prior to negotiating on your behalf the brokerage firm, or an agent associated with the firm, must provide you the
2 following disclosure statement:

3 **DISCLOSURE TO CUSTOMERS** You are a customer of the brokerage firm (hereinafter Firm). The Firm is either an agent
4 of another party in the transaction or a subagent of another firm that is the agent of another party in the transaction. A
5 broker or a salesperson acting on behalf of the Firm may provide brokerage services to you. Whenever the Firm is
6 providing brokerage services to you, the Firm and its brokers and salespersons (hereinafter Agents) owe you, the
7 customer, the following duties:

- 8 (a) The duty to provide brokerage services to you fairly and honestly.
- 9 (b) The duty to exercise reasonable skill and care in providing brokerage services to you.
- 10 (c) The duty to provide you with accurate information about market conditions within a reasonable time if you request
11 it, unless disclosure of the information is prohibited by law.
- 12 (d) The duty to disclose to you in writing certain Material Adverse Facts about a property, unless disclosure of the
13 information is prohibited by law (see lines 42-51).
- 14 (e) The duty to protect your confidentiality. Unless the law requires it, the Firm and its Agents will not disclose your
15 confidential information or the confidential information of other parties (see lines 23-41).
- 16 (f) The duty to safeguard trust funds and other property held by the Firm or its Agents.
- 17 (g) The duty, when negotiating, to present contract proposals in an objective and unbiased manner and disclose the
18 advantages and disadvantages of the proposals.

19 Please review this information carefully. An Agent of the Firm can answer your questions about brokerage services,
20 but if you need legal advice, tax advice, or a professional home inspection, contact an attorney, tax advisor, or home
21 inspector. This disclosure is required by section 452.135 of the Wisconsin statutes and is for information only. It is a
22 plain-language summary of the duties owed to a customer under section 452.133(1) of the Wisconsin statutes.

23 **CONFIDENTIALITY NOTICE TO CUSTOMERS** The Firm and its Agents will keep confidential any information given to the
24 Firm or its Agents in confidence, or any information obtained by the Firm and its Agents that a reasonable person
25 would want to be kept confidential, unless the information must be disclosed by law or you authorize the Firm to
26 disclose particular information. The Firm and its Agents shall continue to keep the information confidential after the
27 Firm is no longer providing brokerage services to you.

28 The following information is required to be disclosed by law:

- 29 1. Material Adverse Facts, as defined in Wis. Stat. § 452.01(5g) (see lines 42-51).
- 30 2. Any facts known by the Firm or its Agents that contradict any information included in a written inspection
31 report on the property or real estate that is the subject of the transaction.

32 To ensure that the Firm and its Agents are aware of what specific information you consider confidential, you may
33 list that information below (see lines 35-41) or provide that information to the Firm or its Agents by other means. At a
34 later time, you may also provide the Firm or its Agents with other information you consider to be confidential.

35 **CONFIDENTIAL INFORMATION:** _____

36 _____

37 _____

38 **NON-CONFIDENTIAL INFORMATION** (the following information may be disclosed by the Firm and its Agents): _____

39 _____

40 _____

41 *(Insert information you authorize to be disclosed, such as financial qualification information.)*

42 DEFINITION OF MATERIAL ADVERSE FACTS

43 A "Material Adverse Fact" is defined in Wis. Stat. § 452.01(5g) as an Adverse Fact that a party indicates is of such
44 significance, or that is generally recognized by a competent licensee as being of such significance to a reasonable
45 party, that it affects or would affect the party's decision to enter into a contract or agreement concerning a transaction
46 or affects or would affect the party's decision about the terms of such a contract or agreement.

47 An "Adverse Fact" is defined in Wis. Stat. § 452.01(1e) as a condition or occurrence that a competent licensee
48 generally recognizes will significantly and adversely affect the value of the property, significantly reduce the structural
49 integrity of improvements to real estate, or present a significant health risk to occupants of the property; or information
50 that indicates that a party to a transaction is not able to or does not intend to meet his or her obligations under a
51 contract or agreement made concerning the transaction.

52 **NOTICE ABOUT SEX OFFENDER REGISTRY** You may obtain information about the sex offender registry and persons
53 registered with the registry by contacting the Wisconsin Department of Corrections on the Internet at
54 <http://www.doc.wi.gov> or by telephone at 608-240-5830.

No representation is made as to the legal validity of any provision or the adequacy of any provision in any specific transaction.
Copyright © 2016 by Wisconsin REALTORS® Association. Drafted by Attorney Debra Peterson Conrad

Kothe Real Estate Partners LLC, 324 E Wilson St Madison, WI 53703
Teri Bell

Phone: (608)354-2808 Fax: _____
Produced with zipForm® by zipLogix 18070 Fifteen Mile Road, Fraser, Michigan 48026 www.zipLogix.com

VR80

