

Commercial Space For Lease

275 Bruce St. Suite #300 Verona, WI



Great office/flex space located just off Highway 18/Verona Rd. On the main level there is 1,039 sq.ft. with a private entrance, one large office, a large open reception/work area and one shared bathroom/kitchen break room. On the 2nd floor there is additional 1,085 sq.ft. of office space which includes 2 large offices & a large lobby area. Ample parking onsite and exterior signage available. Vacant and ready for move in.

Rent	\$1,504.50/Month + \$100/mo CAM fee
Square Feet (approx.)	2,124 sq.ft. office space
Utilities Paid By Resident	60% of Gas & 60% Electric.

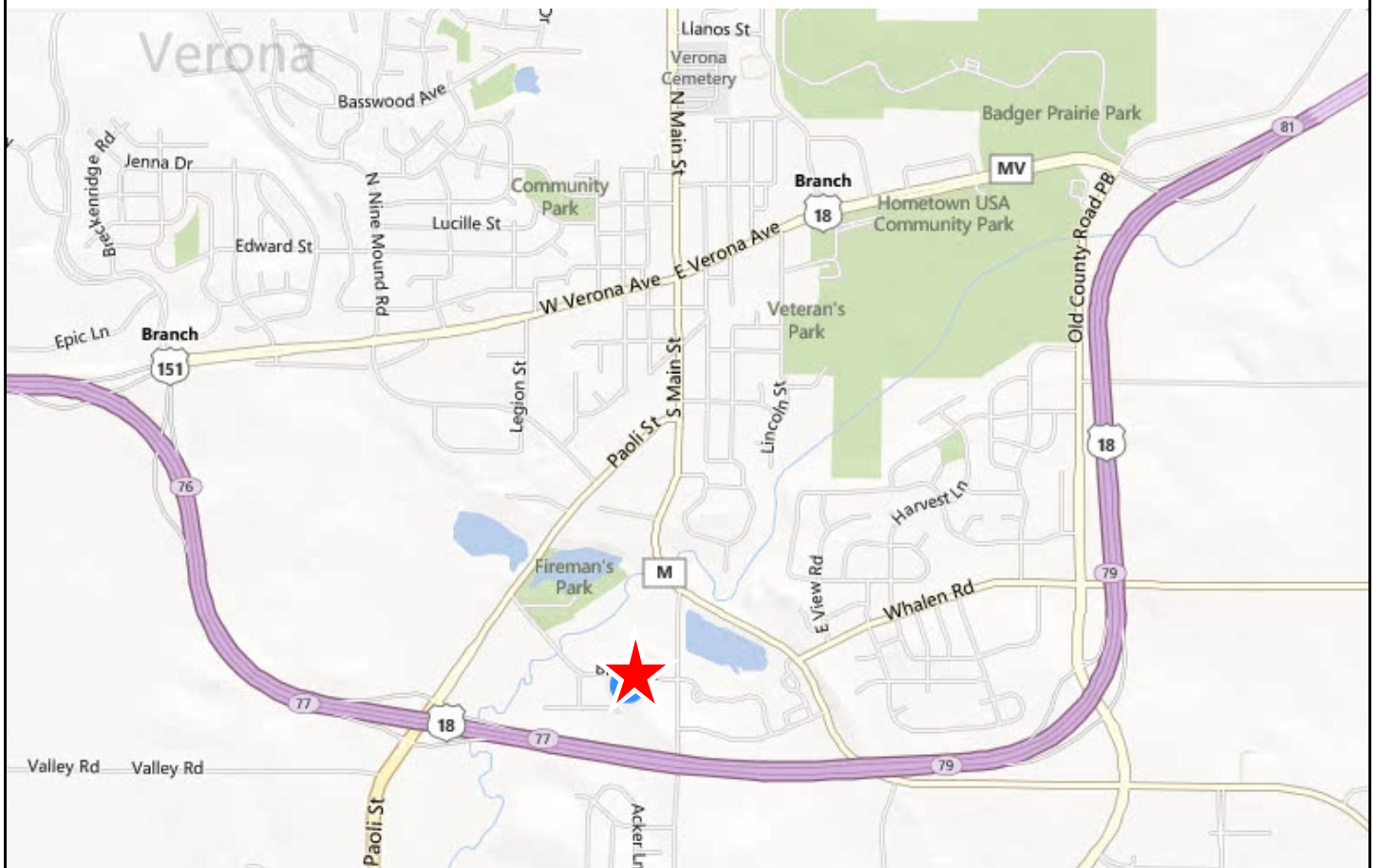


James Stoppie - jim@madisonproperty.com

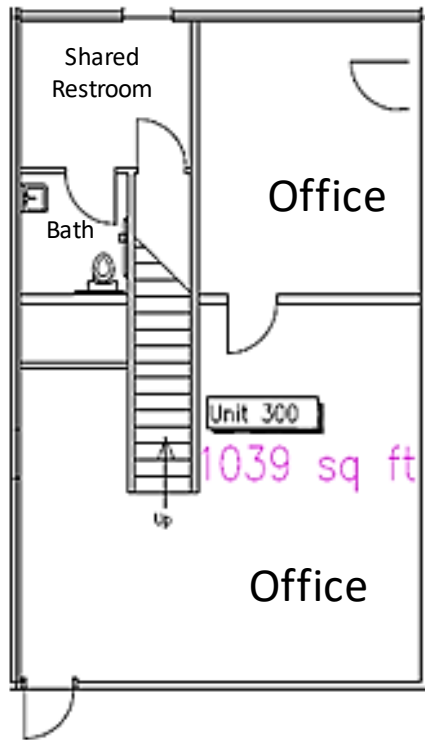
Direct Line (608) 268-4912 - Office (608) 251-8777 - Fax (608) 255-9656

Tony Xiong - tony@madisonproperty.com - Direct Line (608) 268-4987

www.madisonproperty.com/realestate

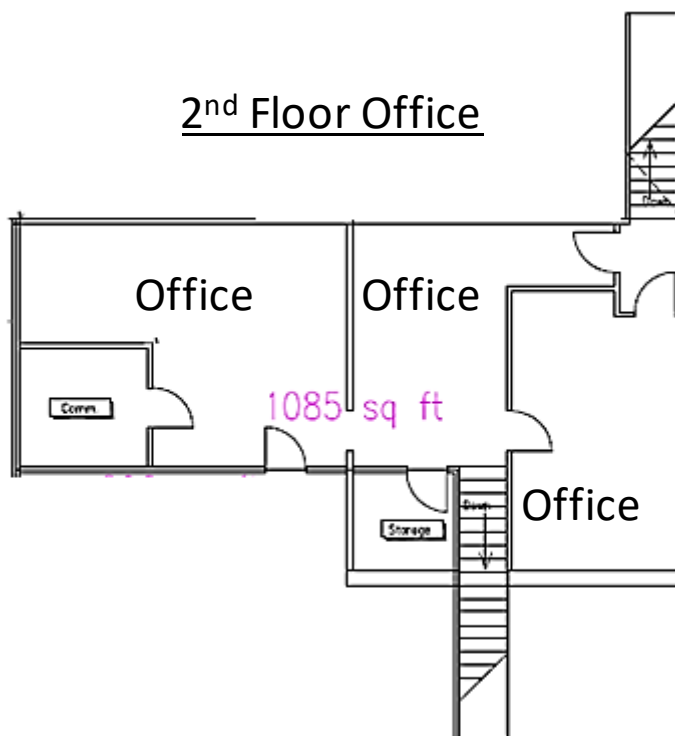


1st Floor Office



2,124 sq.ft. total

2nd Floor Office



Exterior Photos



1st Floor Photos



2nd Floor Photos



Site Plan

