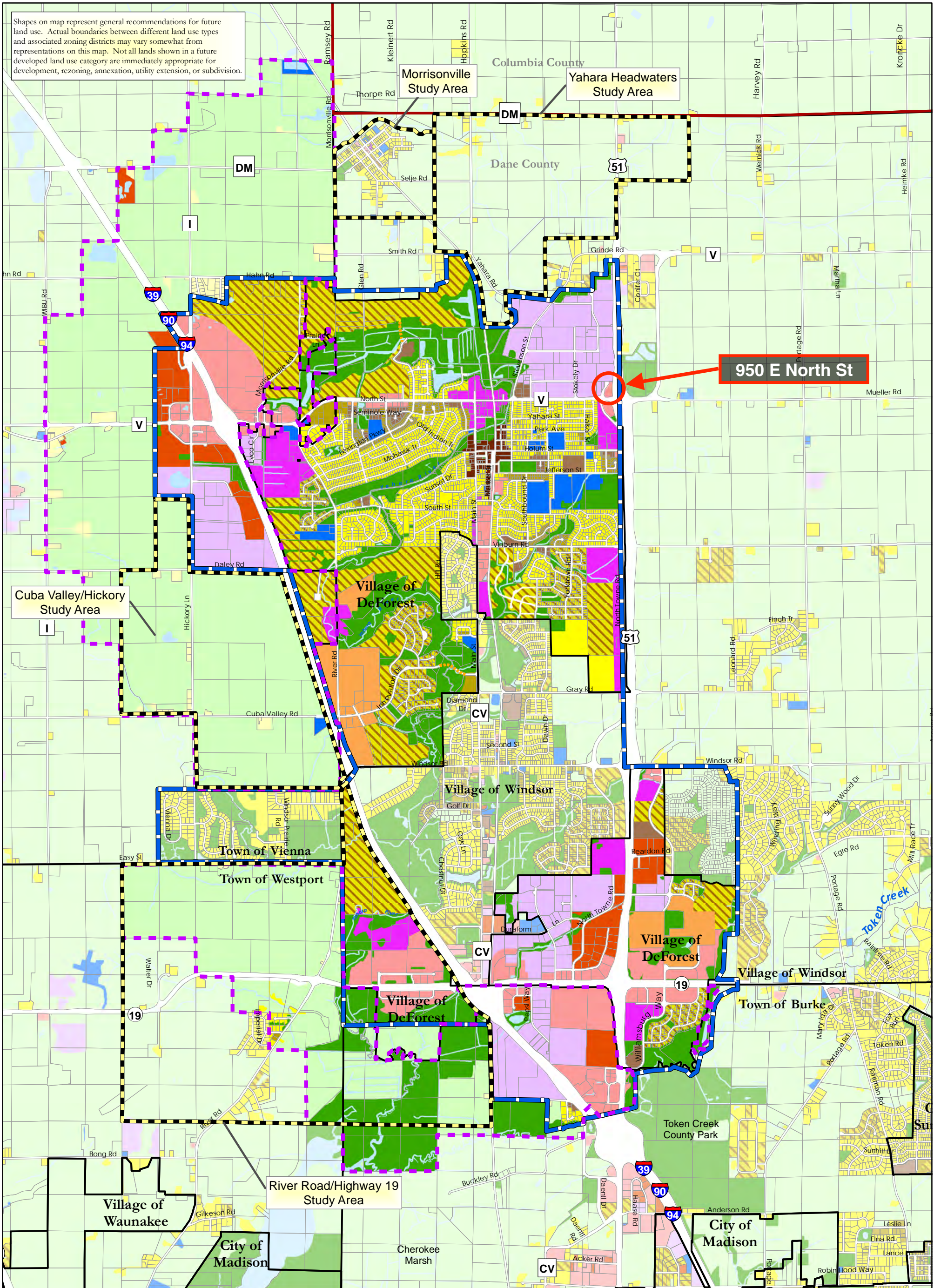


Shapes on map represent general recommendations for future land use. Actual boundaries between different land use types and associated zoning districts may vary somewhat from representations on this map. Not all lands shown in a future developed land use category are immediately appropriate for development, rezoning, annexation, utility extension, or subdivision.



Comprehensive Plan

6-1

Future Land Use

0 2,000 4,000 Feet



August 27, 2018



Sources: Dane County LIO, CARPC, MDROffers, Columbia County LIO, Vierbicher

- County Boundary
- Municipal Boundaries (2018)
- Future Urban Development Area (FUDA)
- Parcels (June 2018)
- DeForest Extraterritorial Jurisdiction (ETJ)
- Study Areas
- Pending Bridge

- Agricultural Preservation Area
- Single Family Residential - Unsewered
- Single Family Residential - Sewered
- Two-Family/Townhouse Residential
- Multiple Family Residential
- Planned Neighborhood
- Commercial
- Downtown
- Office/Research

- Industrial/Business Park
- Commercial or Industrial
- Government/Institutional
- Mixed Use
- Parks & Public Recreation/Environmental Corridor
- Surface Water

Note: Outside of the Village's Extraterritorial Jurisdiction, Existing Land Use (2015) is shown, as opposed to Future Land Use