

Capitol Square Office Space

14 W Mifflin Street

Madison, WI 53703

FOR
LEASE



CBRE

PROPERTY HIGHLIGHTS

Available Space

1,900 SF - 27,500 SF

Three above grade stories, 10,800 SF each. Lower level storage and planned fitness center.

Year Built

1924-1957
(Renovated 2022)

Building under new ownership, with tech forward / creative influenced renovations highlighting exposed ceilings/ductwork/brick walls.

Planned renovations include the first floor lobby, and restrooms on 2nd and 3rd floors. Additional options to allow 2nd and 3rd floor full users the ability to influence design and layout. Option for rooftop patio / assembly amenity spaces with unique Capitol views.

Capitol Square frontage, walkability and countless amenities nearby, add to the benefits of 14 W Mifflin's prime downtown location. An aggressive tenant improvement allowance can be provided, commensurate with lease term.

Available Space

Floor	Availability	SF	Rental Rate
3	Entire Floor	Up to 10,800	\$19.75/SF, NNN
2	Entire Floor	Up to 10,800	\$19.75/SF, NNN
Lower Level	Suite LL-1 (Office)	720	\$16/SF, NNN
Lower Level	Various Storage Spaces		\$15/SF, Gross
Rooftop	Build-to-Suit Assembly Space	Up to 3,800 SF	TBD

Expenses

Tenant responsible for proportionate share of operating expenses, utilities, in-suite janitorial

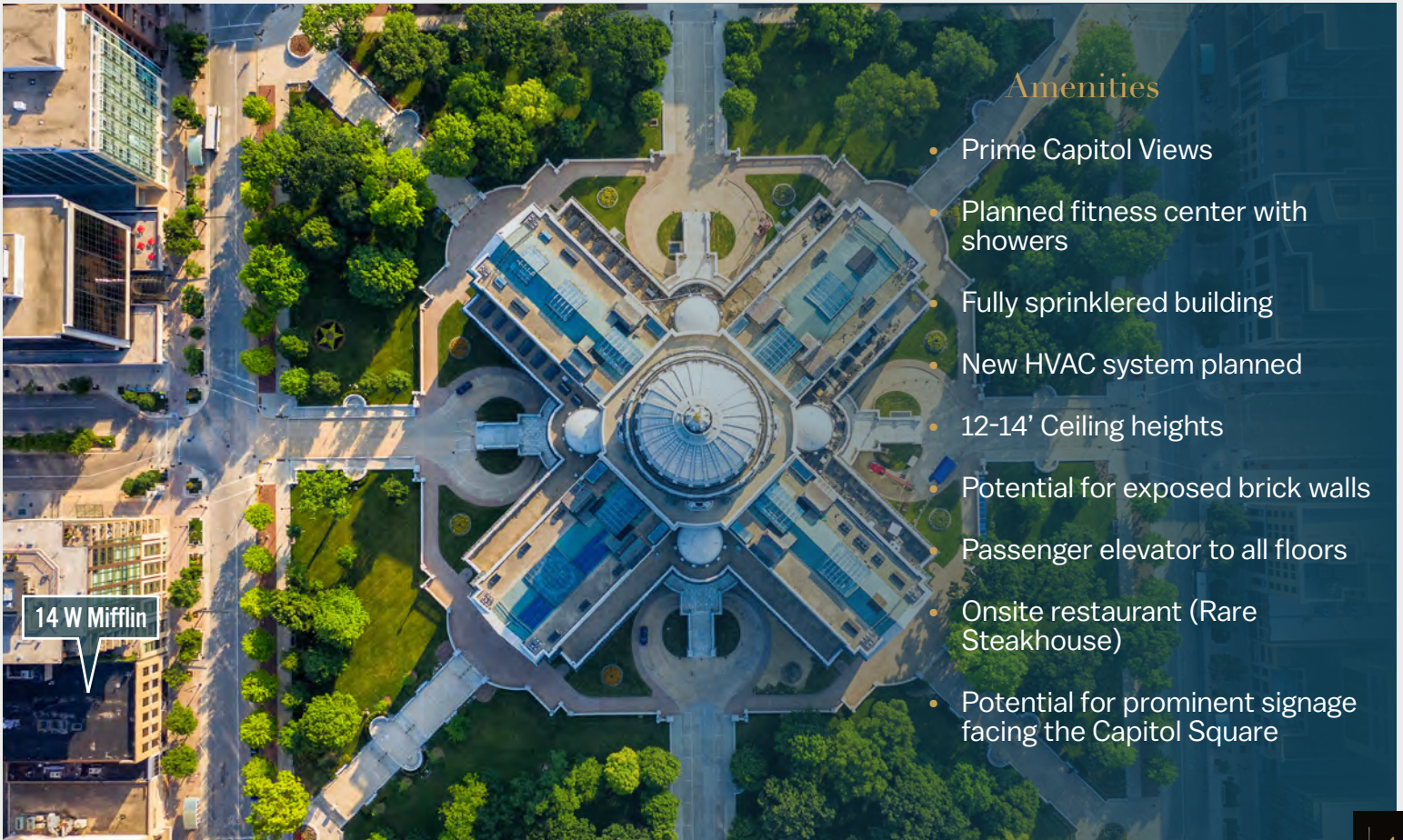
Parking Available

- State Street Capitol Garage (public hourly/monthly)
- Overture Center Garage (public hourly/monthly)
- Concourse Hotel (Monthly)

Lobby Renderings



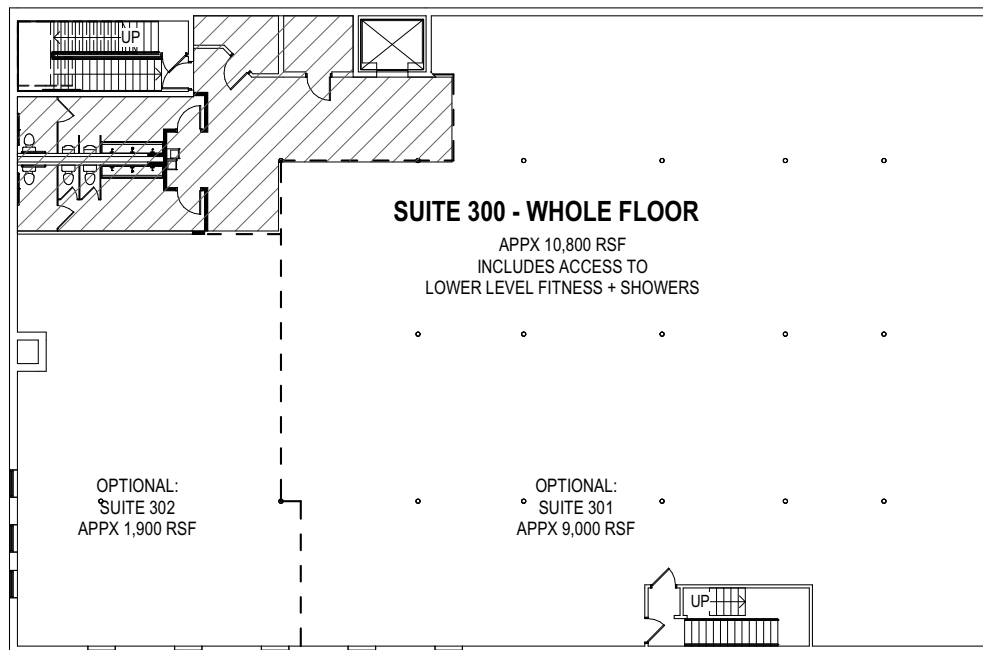
Interior Rendering



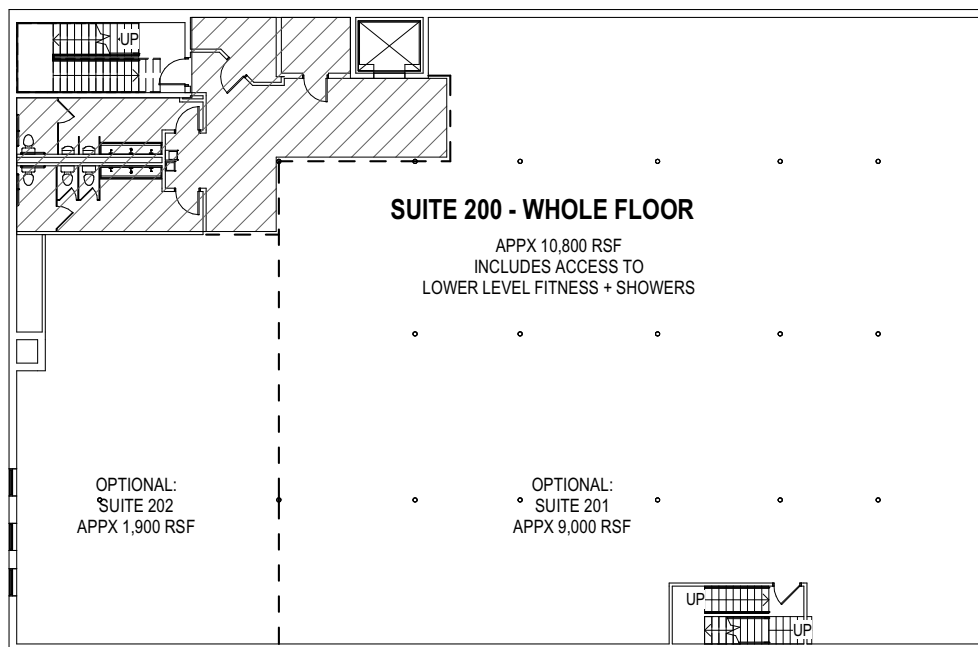
Amenities

- Prime Capitol Views
- Planned fitness center with showers
- Fully sprinklered building
- New HVAC system planned
- 12-14' Ceiling heights
- Potential for exposed brick walls
- Passenger elevator to all floors
- Onsite restaurant (Rare Steakhouse)
- Potential for prominent signage facing the Capitol Square

FLOOR PLANS

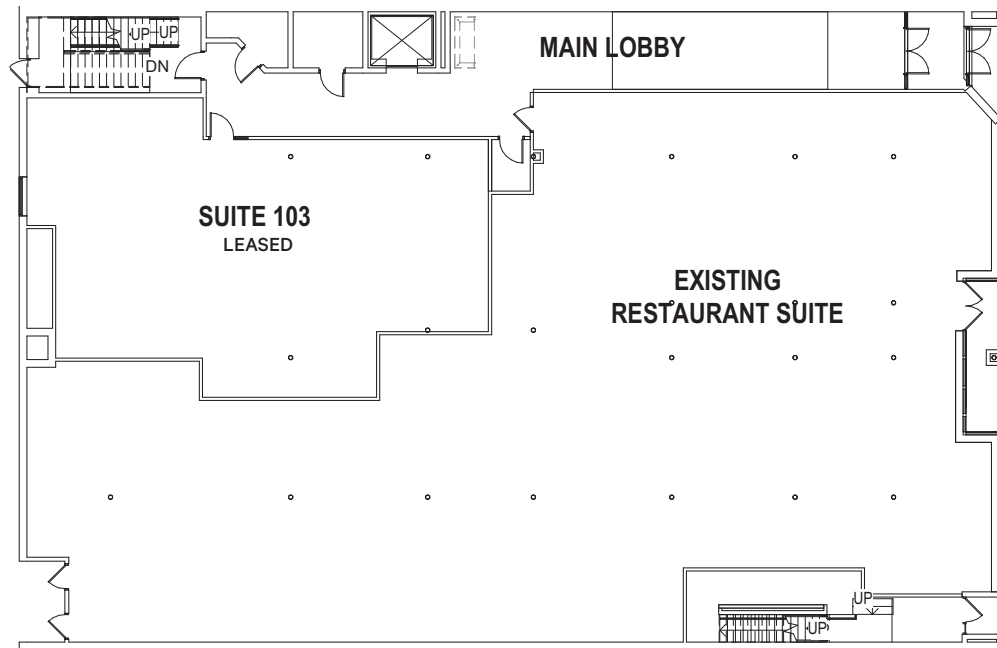


Third Floor

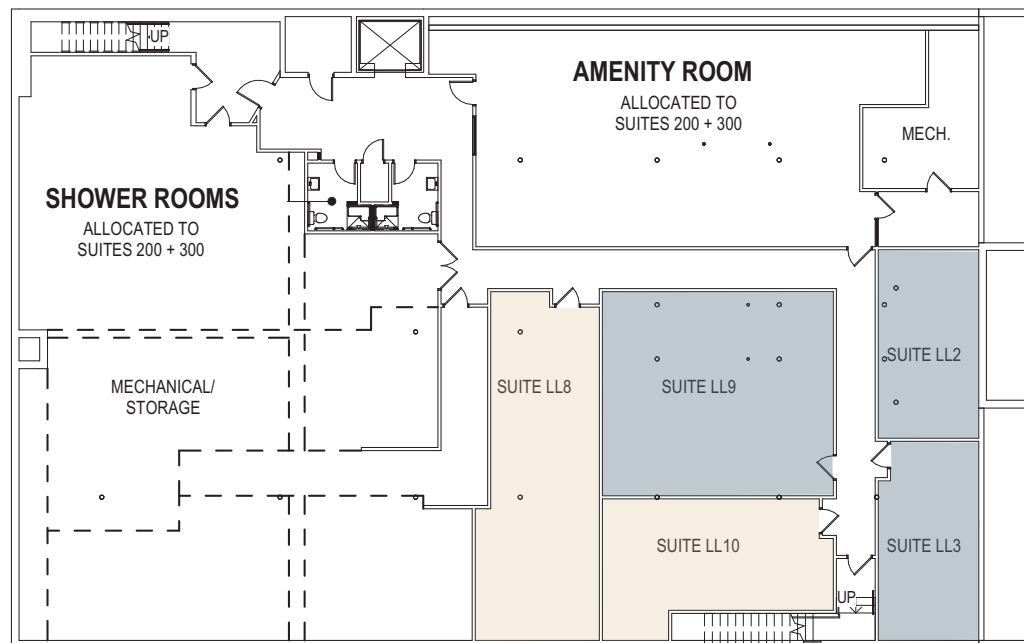


Second Floor

FLOOR PLANS

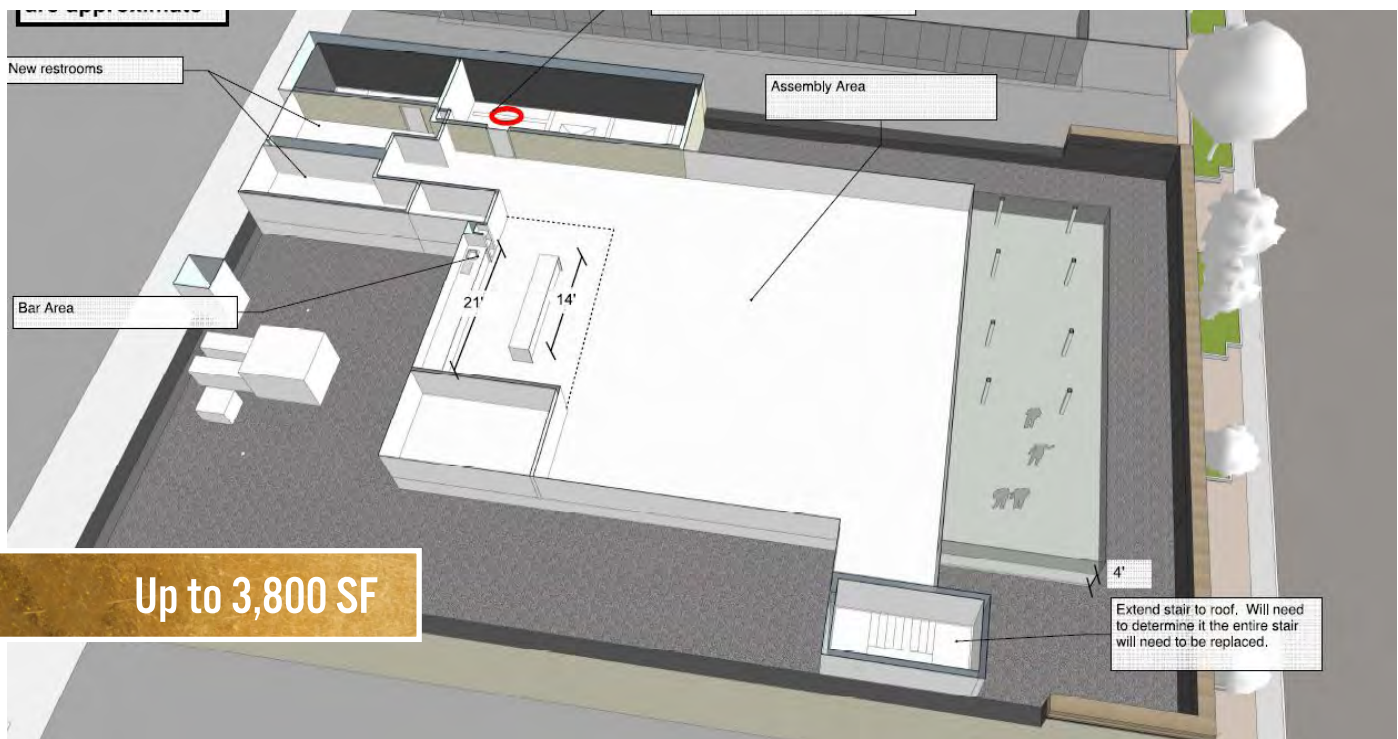


First Floor



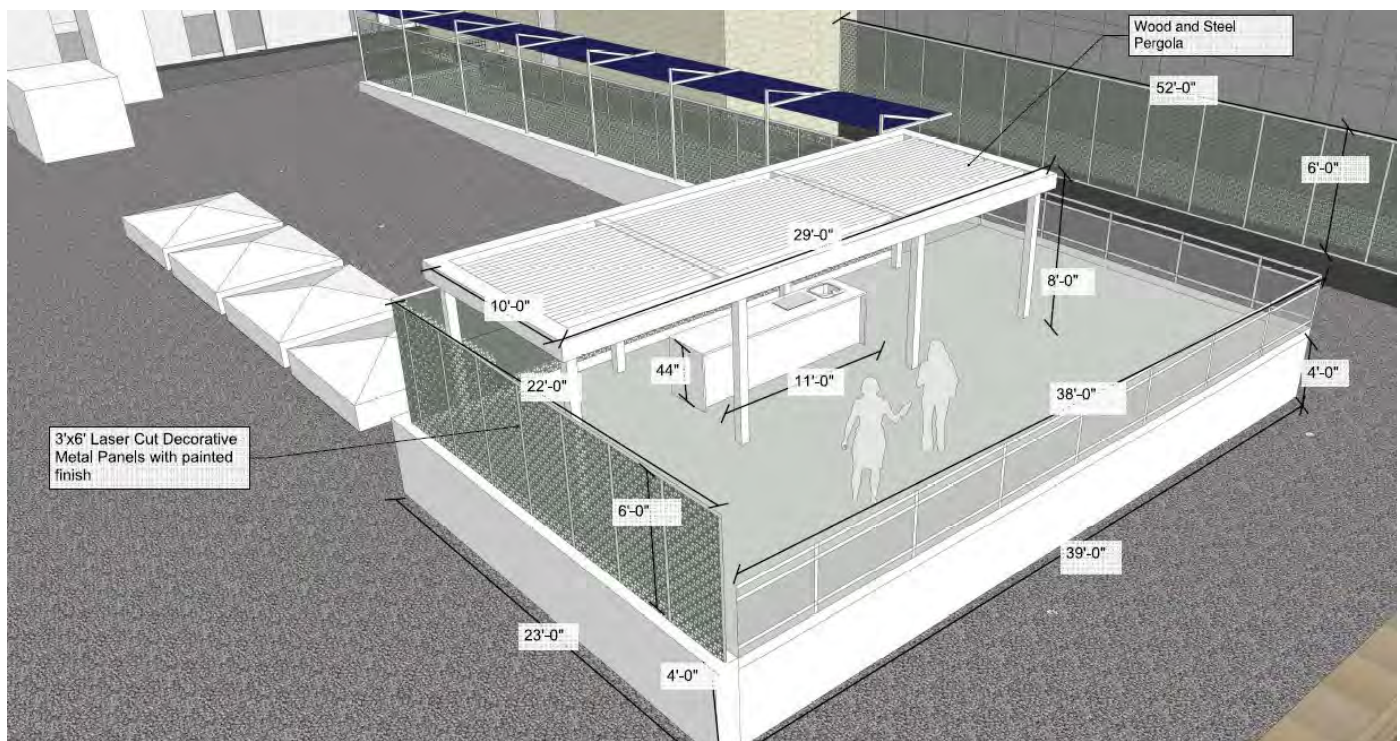
Lower Level

ASSEMBLY OPTION



CONCEPTUAL ROOFTOP AMENITY SPACES

PATIO OPTION



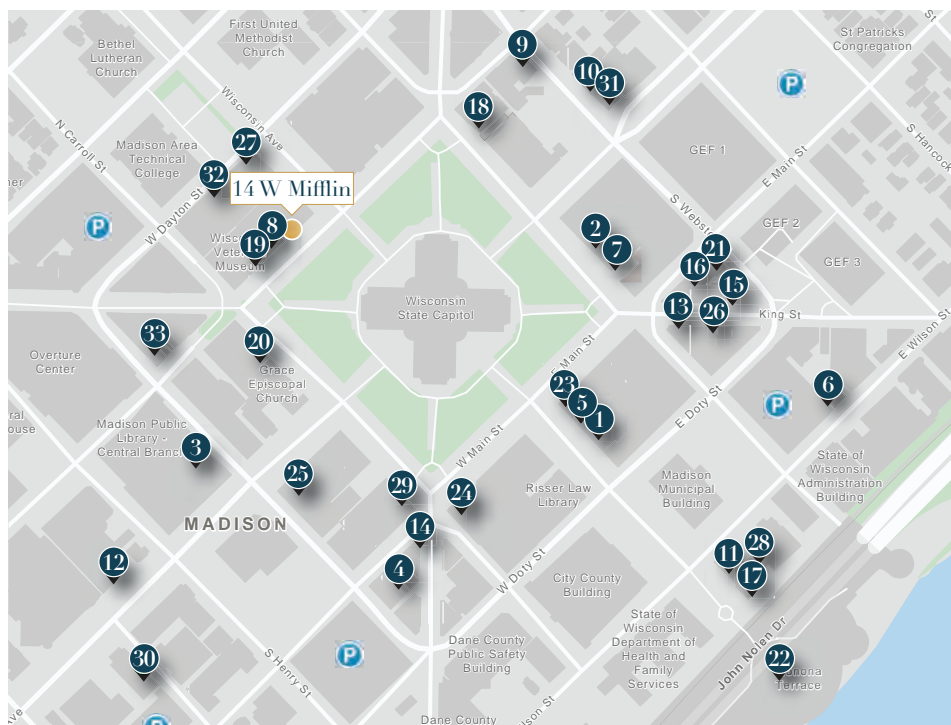
LOCATION OVERVIEW

Prime Location

Excellent public transportation,
and very walkable, directly on
Capitol Square

Destination	Distance	Time Traveled
UW-Madison Campus	6 blocks	13-minute walk
Wisconsin State Capitol	Across the street	1-minute walk
University Research Park	5 miles	16-minute drive
Dane County Regional Airport	6 miles	19-minute drive
Interstate 90/94/39	6 miles	15-minute drive
Milwaukee	80 miles	1.5-hour drive

Amenity Map



Restaurants

1. DLUX
2. L'Etoile
3. Casetta Kitchen & Counter
4. Tornado Steak House
5. BelAir Cantina
6. Tempest Oyster Bar
7. Graze
8. Rare Steakhouse
9. Heritage Tavern
10. Eno Vino
11. Madison Club
12. RED Sushi
33. Centro

Bars

13. Lucielle
14. Genna's Lounge
15. D'Vino
16. Maduro
17. The Audrey
18. The Old Fashioned
19. The Coopers Tavern
20. Graft
21. Argus Bar & Gril

Venues & Coffee

22. Monona Terrace
23. Starbucks
24. Wonderstate Coffee
25. Barriques
26. Ancora Cafe + Bakery
27. Starbucks

Hotels

28. Hilton Madison
29. Best Western Premier Park
30. Hyatt Place
31. AC Hotel by Marriott
32. The Madison Concourse Hotel



Capitol Square Office Space

14 W Mifflin Street Madison, WI 53703

CONTACT

Chase Brieman

Senior Vice President

+1 608 441 7571

chase.brieman@cbre.com

James West

Vice President

+1 608 441 7578

j.west@cbre.com

© 2022 CBRE, Inc. All rights reserved. This information has been obtained from sources believed reliable, but has not been verified for accuracy or completeness. Any projections, opinions, or estimates are subject to uncertainty. The information may not represent the current or future performance of the property. You and your advisors should conduct a careful, independent investigation of the property and verify all information. Any reliance on this information is solely at your own risk. CBRE and the CBRE logo are service marks of CBRE, Inc. and/or its affiliated or related companies in the United States and other countries. All other marks displayed on this document are the property of their respective owners. Photos herein are the property of their respective owners and use of these images without the express written consent of the owner is prohibited. PMStudio April_2022

CBRE

State of Wisconsin Broker Disclosure

To Non-Residential Customers

Wisconsin Law requires all real estate licensees to give the following information about brokerage services to prospective customers.

Prior to negotiating on your behalf the Broker must provide you the following disclosure statement:

Broker Disclosure to Customers

You are the customer of the broker. The broker is either an agent of another party in the transaction or a subagent of another broker who is the agent of another party in the transaction. The broker, or a salesperson acting on the behalf of the broker, may provide brokerage services to you. Whenever the broker is providing brokerage services to you, the broker owes you, the customer the following duties:

- The duty to prove brokerage services to you fairly and honestly.
- The duty to exercise reasonable skill and care in providing brokerage services to you.
- The duty to provide you with accurate information about market conditions within a reasonable time if you request it, unless disclosure of the information is prohibited by law.
- The duty to disclose to you in writing certain material adverse facts about a property, unless disclosure of the information is prohibited by law (see "Definition of Material Adverse Facts" below).
- The duty to protect your confidentiality. Unless the law requires it, the broker will not disclose your confidential information of other parties.
- The duty to safeguard trust funds and other property the broker holds.
- The duty, when negotiating, to present contract proposals in an objective & unbiased manner and disclose the advantages and disadvantages of the proposals.

Please review this information carefully. A broker or salesperson can answer your questions about brokerage services, but if you need legal advice, tax advice, or a professional home inspection, contact an attorney, tax advisor, or home inspector. This disclosure is required by section 452.135 of the Wisconsin Statutes and is for information only. It is a plain language summary of a broker's duties to a customer under section 452.133(l) of the Wisconsin Statutes.

Confidentiality Notice to Customers

Broker will keep confidential any information given to broker in confidence, or any information obtained by broker that he or she knows a reasonable person would want to be kept confidential by law, or authorize the broker to disclose particular information. A broker shall continue to keep the information confidential after broker is no longer providing brokerage services to you.

The following information is required to be disclosed by law.

1. Material adverse facts, as defined in section 452.01(5g) of the Wisconsin statutes (see "definition of material adverse facts" below).

2. Any facts known by the broker that contradict any information included in a written inspection report on the property or real estate that is the subject of the transaction. To ensure that the broker is aware of what specific information below. At a later time, you may also provide the broker with other information that you consider to be confidential.

CONFIDENTIAL INFORMATION: _____

NON-CONFIDENTIAL INFORMATION (The following information may be disclosed by Broker): _____

(Insert information you authorize to broker to disclose such as financial qualification information)

Sex Offender Registry

Notice: You may obtain information about the sex offender registry and persons registered with the registry by contacting the Wisconsin Department of Corrections on the Internet at <http://offender.doc.state.wi.us/public/> or by phone at (608)240-5830. <http://offender.doc.state.wi.us/public/> or by phone at (608) 240-5830.

Definition of Material Adverse Facts

A "material adverse fact" is defined in Wis. Stat. 452.01 (5g) as an adverse fact that a party indicates is of such significance, or that is generally recognized by a competent licensee as being of such significance to a reasonable party that it affects or would affect the party's decision to enter into a contract or agreement concerning a transaction or affects or would affect the party's decision about the terms of such a contract or agreement. An "adverse fact" is defined in Wis. Stat. 452.01 (1e) as a condition or occurrence that a competent licensee generally recognizes will significantly adversely affect the value of the property, significantly reduce the structural integrity of improvements to real estate, or present a significant health risk to occupants of the property, or information that indicates that a party to a transaction is not able to or does not intend to meet his or her obligations under a contract or agreement made concerning the transaction.

No representation is made as to the legal validity of any provision or the adequacy of any provision on any specific transaction.