

For Sale



Street Level
Entrance

311 W. Washington Ave, Unit 2

Commercial Condominium

Madison, WI 53703

Property Snapshot

Asking Price \$750,000

Size 3,705 SF

- Notes**
- Perfect for an owner/user
 - Street level suite with entrance on W. Wash
 - Constructed in 2016
 - Sized for 30 FTE's
 - Reception area with vestibule
 - 2 private offices and conference room
 - 2 open engineering areas
 - Break room
 - Men's and women's restrooms
 - Walking distance to the Capitol, restaurants, retail shops, and housing



For More Information:



Tim Ridders
608.669.4153
tridders@cresa.com



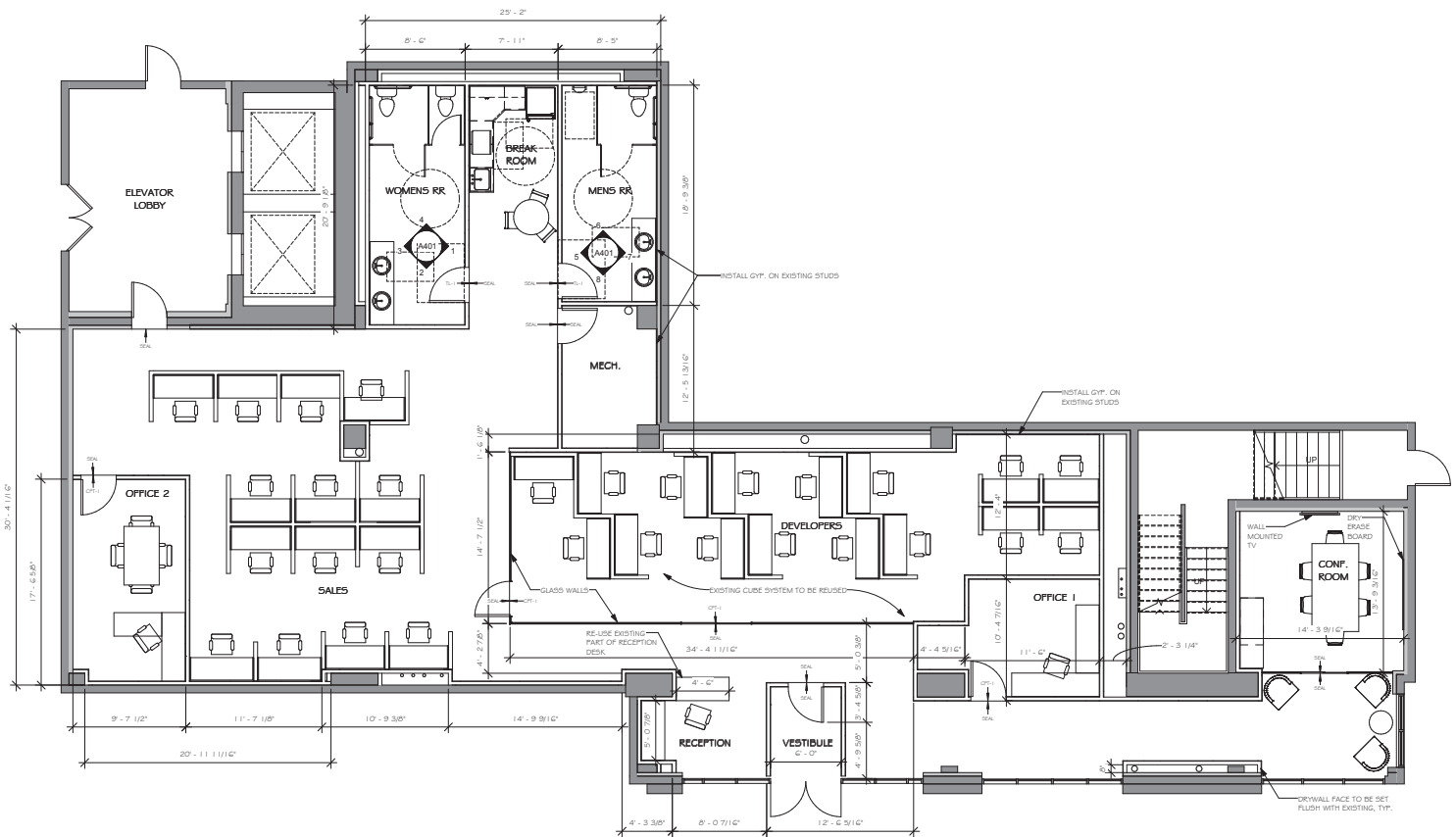
Allison Thompson
608.219.0400
amthompson@cresa.com



TJ Blitz
608.444.9440
tblitz@cresa.com

Floor Plan

311 W. Washington Ave.
Madison, WI 53703



Unit 2, Street Level

