

2303 PARMENTER ST

MIDDLETON, WI 53562



OFFERING SUMMARY

Sale Price:	\$300,000
Building Size:	924 SF
Lot Size:	0.143 Acres
Number of Units:	1
Price / SF:	\$324.68
Year Built:	1920
Zoning:	B-1
Market:	Madison
Submarket:	Middleton

PROPERTY OVERVIEW

Great Redevelopment Opportunity. B-1 zoned office parcel with a tear down single family home. Great visibility on Parmenter St. Close to downtown Middleton and Middleton High School. Potential to add estimated footprint of 1200-1800 sq ft and can go up to three stories high. House is a tear-down.

PROPERTY HIGHLIGHTS

- B-1 Zoning



RE/MAX PREFERRED COMMERCIAL GROUP

Each office independently owned and operated

JOE VOELL
Commercial Director
608.234.7208
joevoell@remax.net

5320 Monona Dr
Monona, WI 53716-3127

800.236.4411

COMMERCIALWISCONSIN.COM

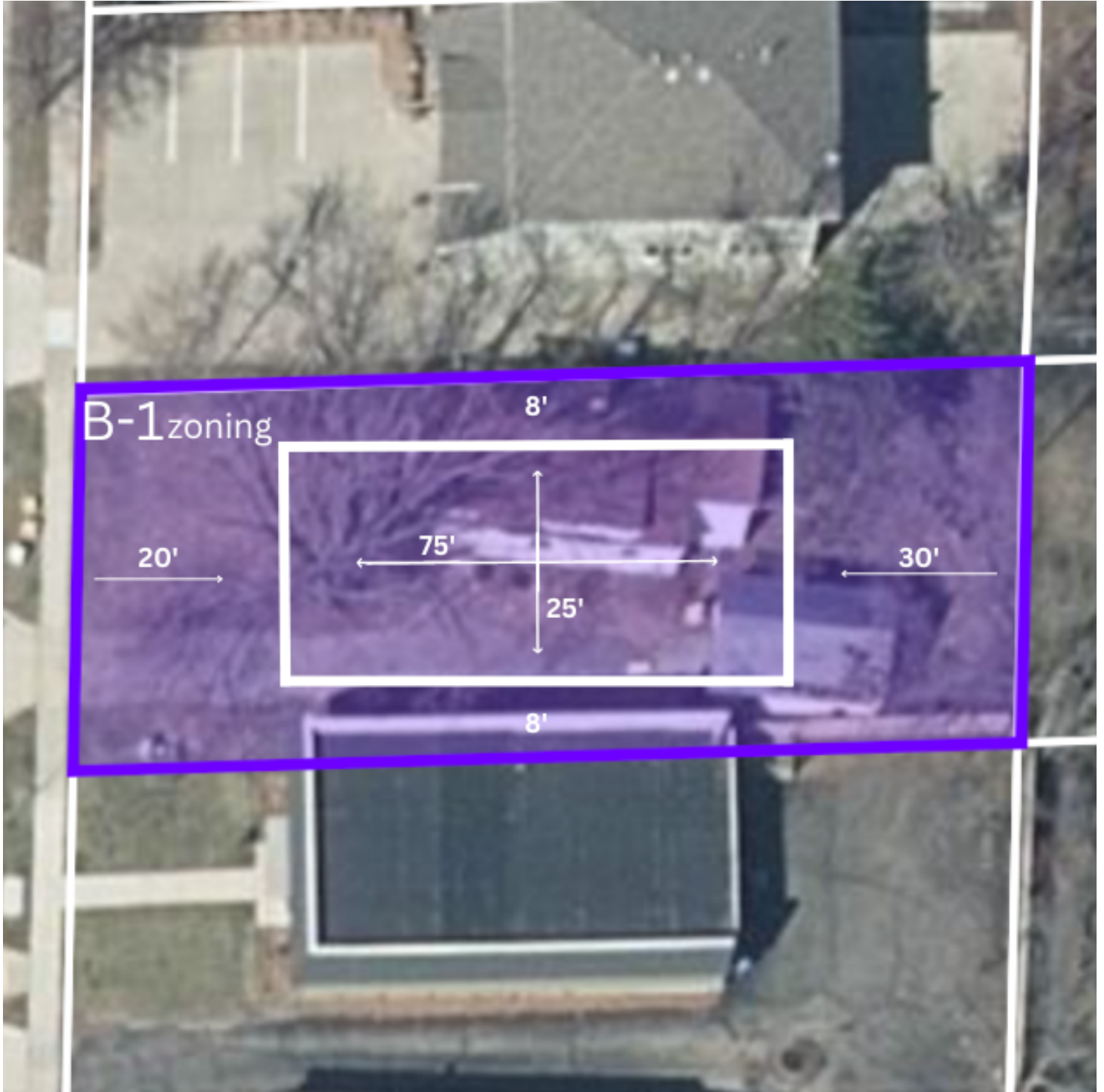
FOR SALE

REDEVELOPMENT OPPORTUNITY

ADDITIONAL PHOTOS

2303 PARMENTER ST

MIDDLETON, WI 53562



RE/MAX PREFERRED COMMERCIAL GROUP

Each office independently owned and operated

5320 Monona Dr
Monona, WI 53716-3127

800.236.4411

COMMERCIALWISCONSIN.COM

JOE VOELL
Commercial Director
608.234.7208
joevoell@remax.net

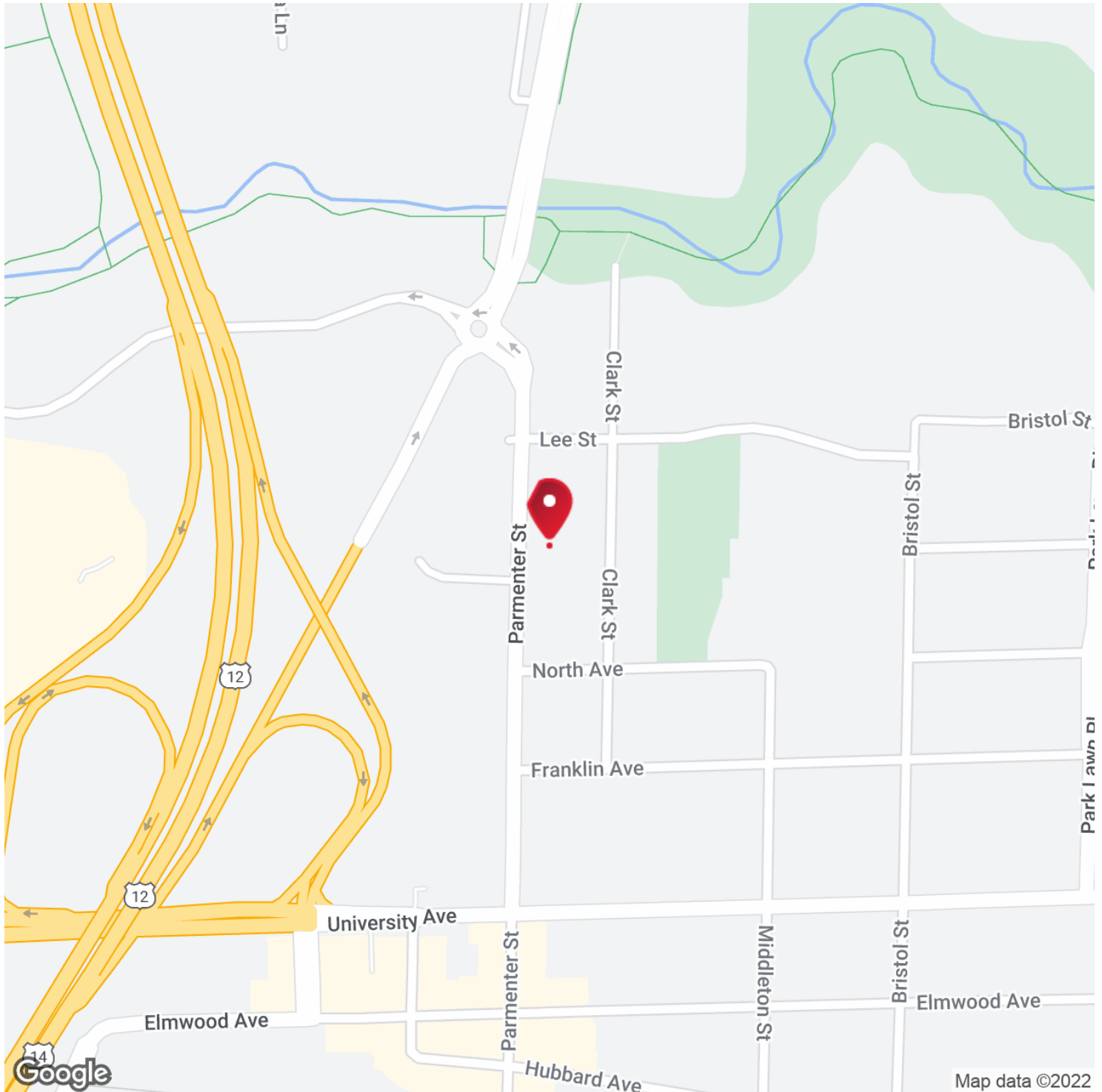
FOR SALE

REDEVELOPMENT OPPORTUNITY

LOCATION MAP

2303 PARMENTER ST

MIDDLETON, WI 53562



RE/MAX PREFERRED COMMERCIAL GROUP

Each office independently owned and operated

5320 Monona Dr
Monona, WI 53716-3127

800.236.4411

COMMERCIALWISCONSIN.COM

JOE VOELL

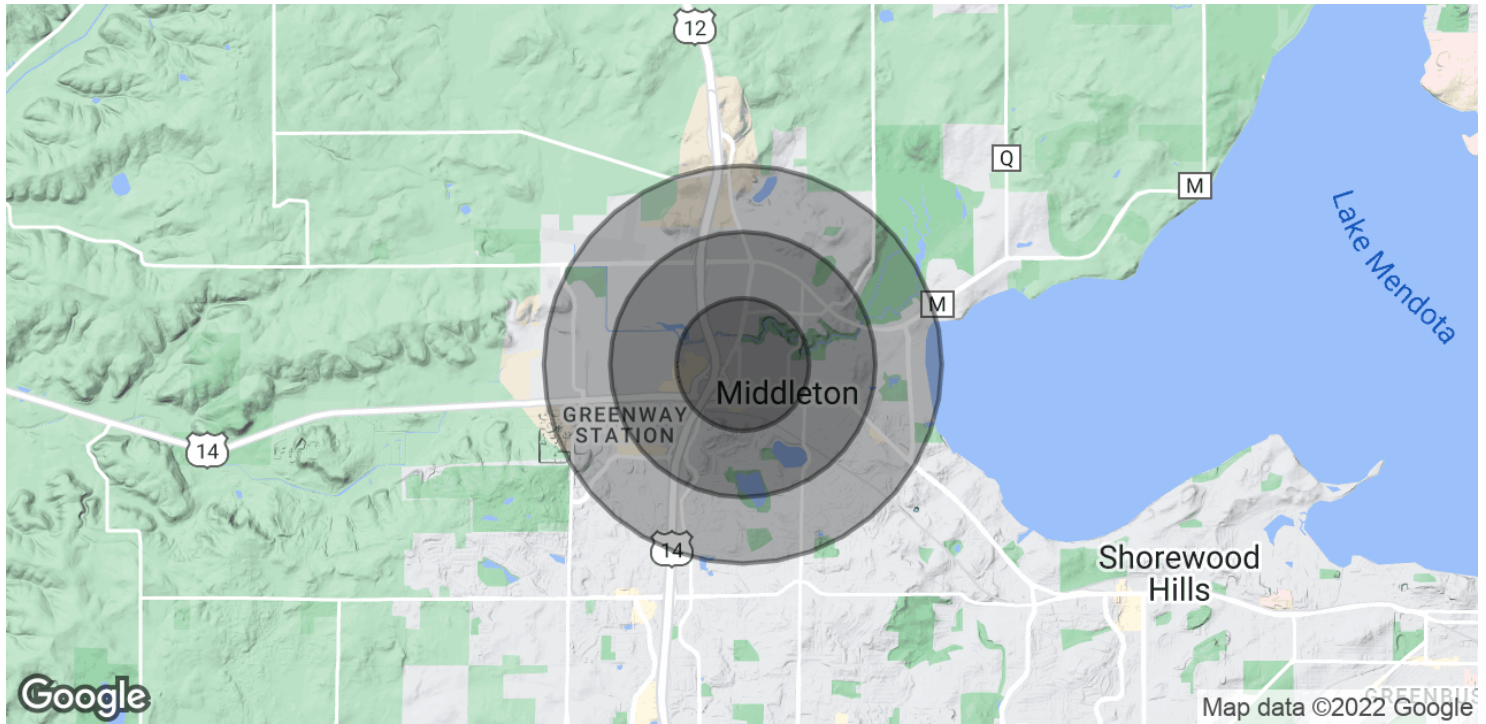
Commercial Director

608.234.7208

joevoell@remax.net

2303 PARMENTER ST

MIDDLETON, WI 53562



POPULATION

0.5 MILES

1 MILE

1.5 MILES

Total Population	1,639	7,106	14,343
Average Age	40.8	38.3	40.2
Average Age (Male)	38.5	36.2	38.3
Average Age (Female)	45.5	41.6	42.6

HOUSEHOLDS & INCOME

0.5 MILES

1 MILE

1.5 MILES

Total Households	751	3,063	6,479
# of Persons per HH	2.2	2.3	2.2
Average HH Income	\$100,441	\$102,202	\$107,325
Average House Value	\$333,303	\$331,805	\$305,527

* Demographic data derived from 2020 ACS - US Census



RE/MAX PREFERRED COMMERCIAL GROUP

Each office independently owned and operated

JOE VOELL
Commercial Director
608.234.7208
joevoell@remax.net

5320 Monona Dr
Monona, WI 53716-3127

800.236.4411

COMMERCIALWISCONSIN.COM