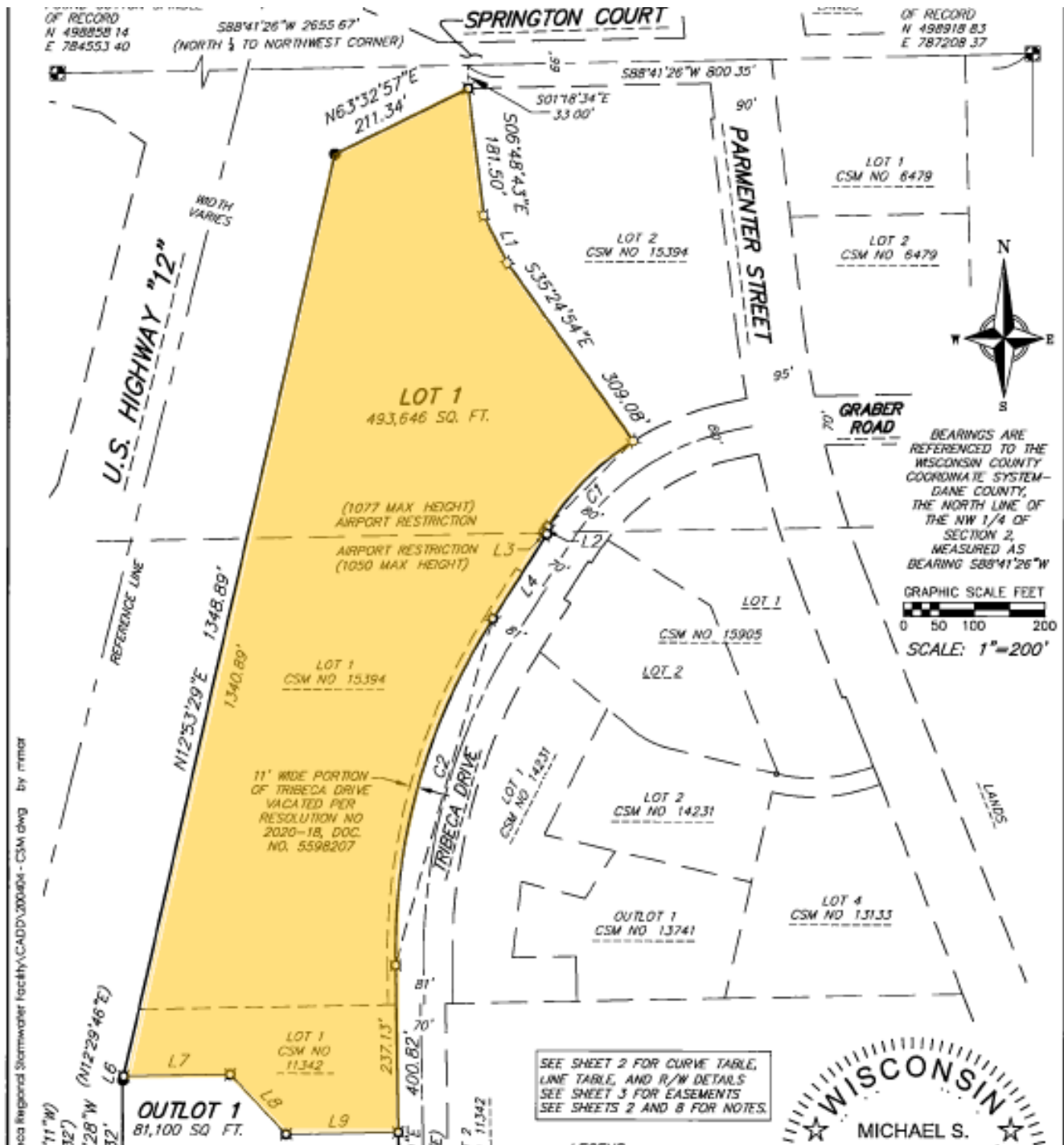


TRIBECA DRIVE, MIDDLETON, WI

Tribeca Drive is conveniently located off the Beltline in the diverse and economically strong community of Middleton with close proximity to parks, restaurants, shopping, golf courses, fitness centers, medical facilities, and a municipal airport. Middleton offers several incentives to facilitate business growth including a strong TIF base and financial assistance from the Middleton Area Development Corporation. In addition to its growing business development, Middleton is a great community in which to live and was named in the Top 10 of *Money Magazine's* "Best Places to Live" in America in the years 2005-2013.



LAND FOR DEVELOPMENT OR SALE



TRIBECA DRIVE, MIDDLETON, WI

Lot 1 – 493,646 sf (divisible)

Asking rate: \$15.00/sf

