

5 UNIT CONVERSION
2248 S. SYENE ROAD FITCHBURG, WI 53711

SHEET INDEX		
Sheet Number	Sheet Name	Issue Date
A000	COVER SHEET AND SITE INFORMATION	12.10.2019
A101	LOWER LEVEL DEMOLITION PLAN & FLOOR PLAN	12.10.2019
A121	LOWER LEVEL REFLECTED CEILING PLAN	12.10.2019
A201	BUILDING ELEVATIONS	12.10.2019
A301	BUILDING SECTION, SCHEDULES & WINDOW TYPES	12.10.2019
A801	CEILING DETAILS	12.10.2019



Legal Description
LOT 2 CSM 493 CS2/3006301 SEC 14-4-9 PRT SW1/4SE1/4 COM SEC
S1/4 COR TH N89DEGE 41.2 FT TH N 167.19 FT TO POB TH COM N 9
7.01 FT TH N89DEGE 246.55 FT TH S140DEGE 83.79 FT TH N74DEGE
30 FT TH S13DEGE 30.34 FT TH N88DEGEW 296.48 FT TO POB SUB J
O ELECTRIC ESMT DESCR IN R4007/58

1 VICINITY MAP



2 SITE PLAN
1" = 50'-0"

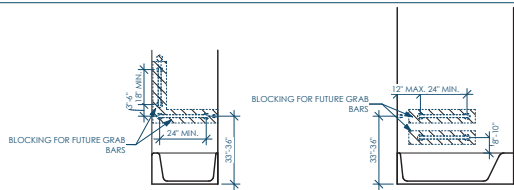


Architect: OpeningDesign
316 W Washington Ave | Suite 675
Wausau, WI 53993
ryan@openingdesign.com | 773.425.6456

COVER SHEET AND SITE INFORMATION - 10/20/2020
5-UNIT CONVERSION, 2248 S. SYENE ROAD
FITCHBURG, WI 53711

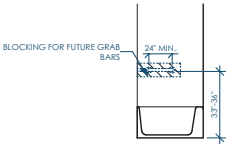


A000



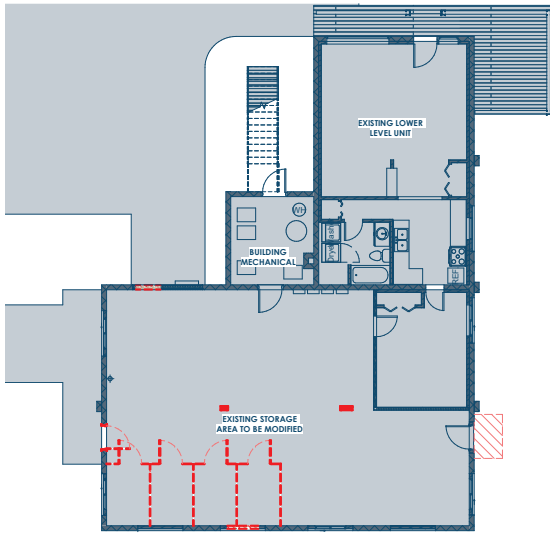
③ ADA - TYPE B - BATH - CONTROLS SIDE
3/8" = 1'-0"

④ ADA - TYPE B - BATH - FRONT
3/8" = 1'-0"



③ ADA - TYPE B - BATH - NON-CONTROL SIDE
3/8" = 1'-0"

④ ADA - TYPE B - WATER CLOSET - FRONT
3/8" = 1'-0"

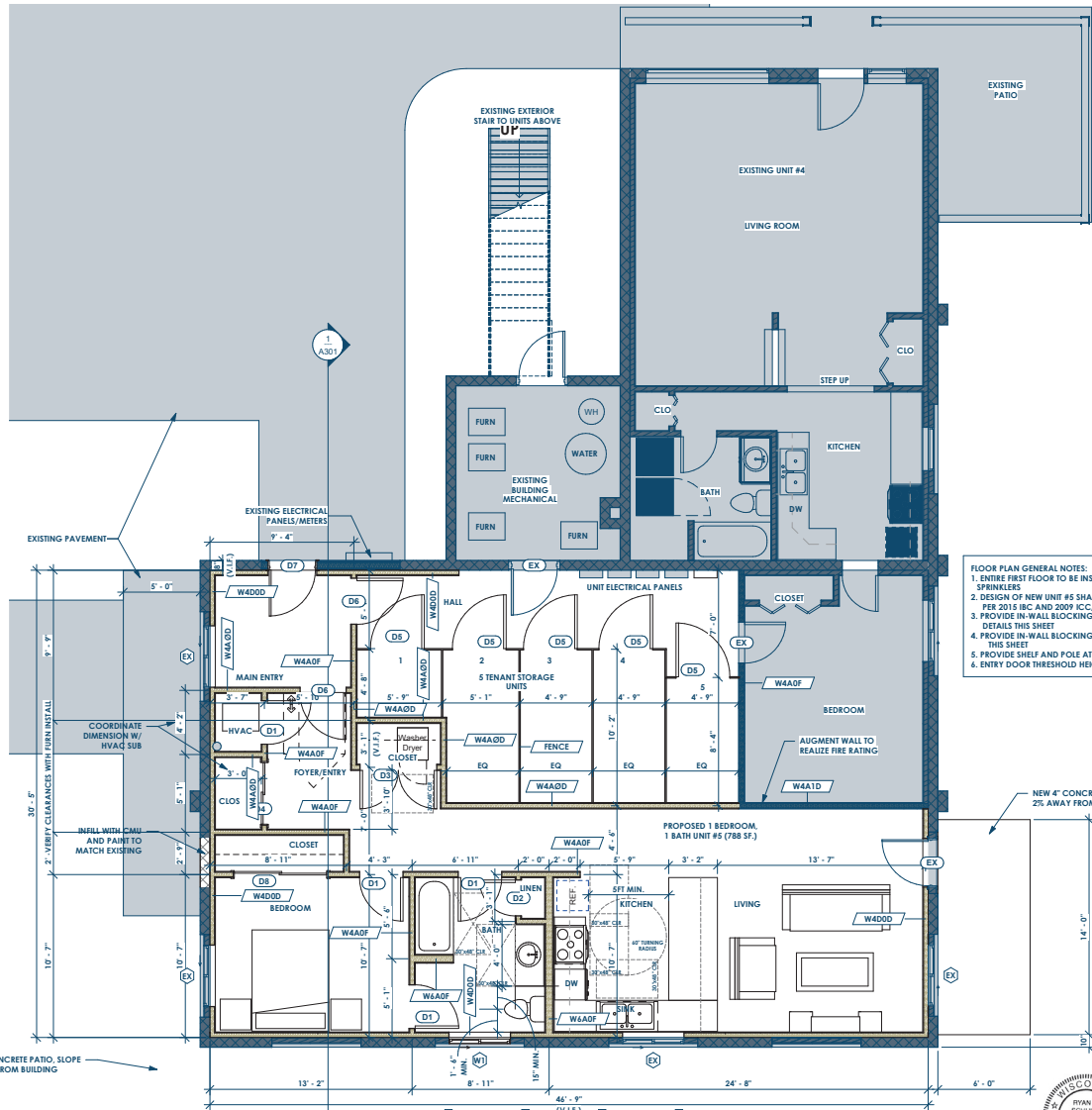


⑤ DEMOLITION FLOOR PLAN - LOWER LEVEL
1/8" = 1'-0"



Architect: Opening Design
316 W Washington Ave | Suite 675
Wausau, WI 53095
ryan@openingdesign.com | 773.425.6456

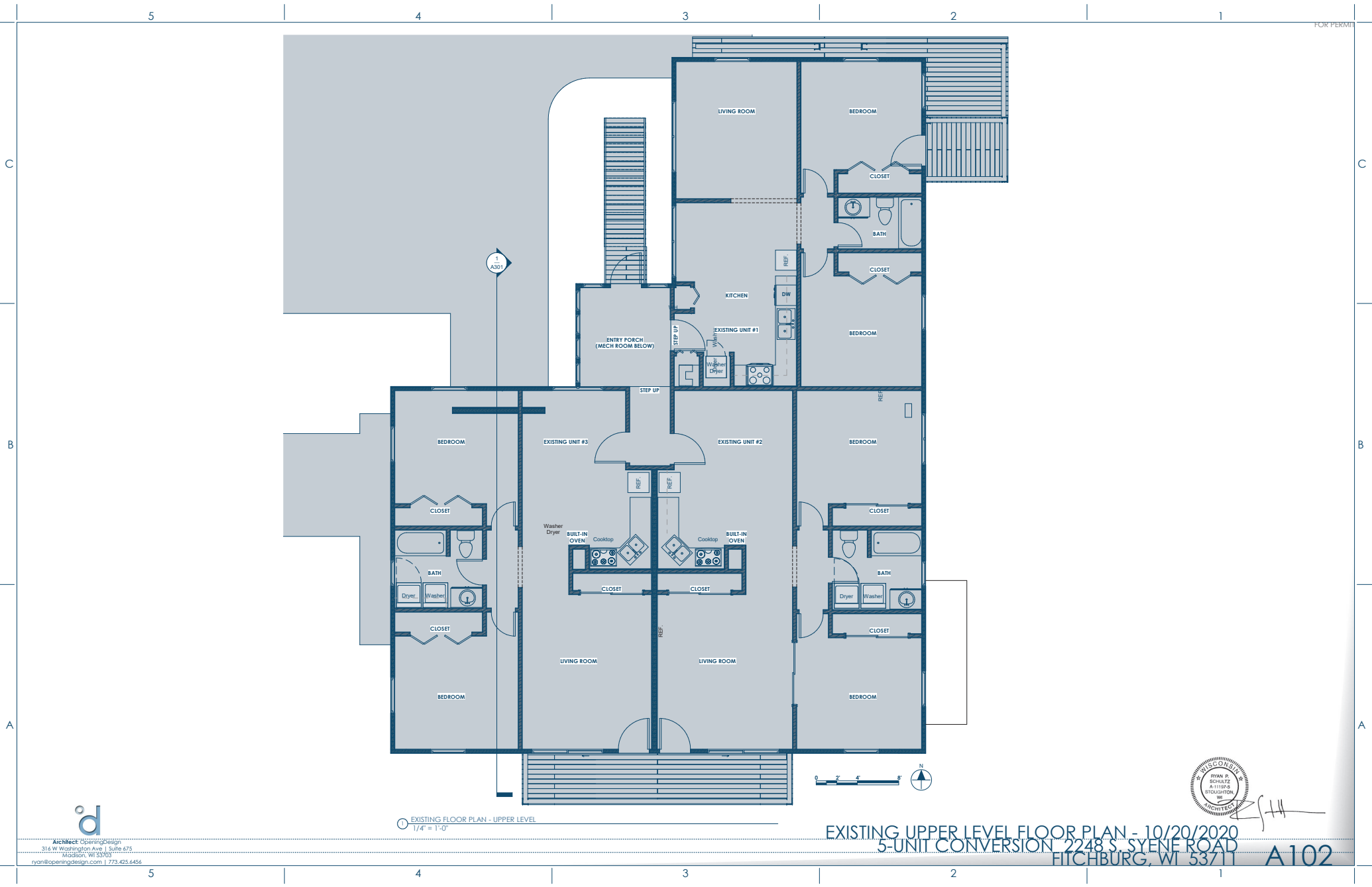
① FLOOR PLAN - LOWER LEVEL
1/4" = 1'-0"



- FLOOR PLAN GENERAL NOTES:
1. ENTIRE FIRST FLOOR TO BE INSTALLED WITH MONITORED (13R) SPRINKLERS
 2. DESIGN OF NEW UNIT #5 SHALL BE TYPE "B" DWELLING UNIT PER 2015 IBC AND 2009 ICC/ANSI A117.1
 3. PROVIDE IN-WALL BLOCKING AT WATER CLOSET, REFER TO DETAILS THIS SHEET
 4. PROVIDE IN-WALL BLOCKING AT SHOWER, REFER TO DETAILS THIS SHEET
 5. PROVIDE SHELF AND POLE AT CLOSETS, TYP.
 6. ENTRY DOOR THRESHOLD HEIGHT SHALL NOT EXCEED 1/2"



LOWER LEVEL DEMOLITION PLAN & FLOOR PLAN - 10/20/2020
5-UNIT CONVERSION 2248 S. SYENE ROAD
FITCHBURG, WI 53711 A101



5

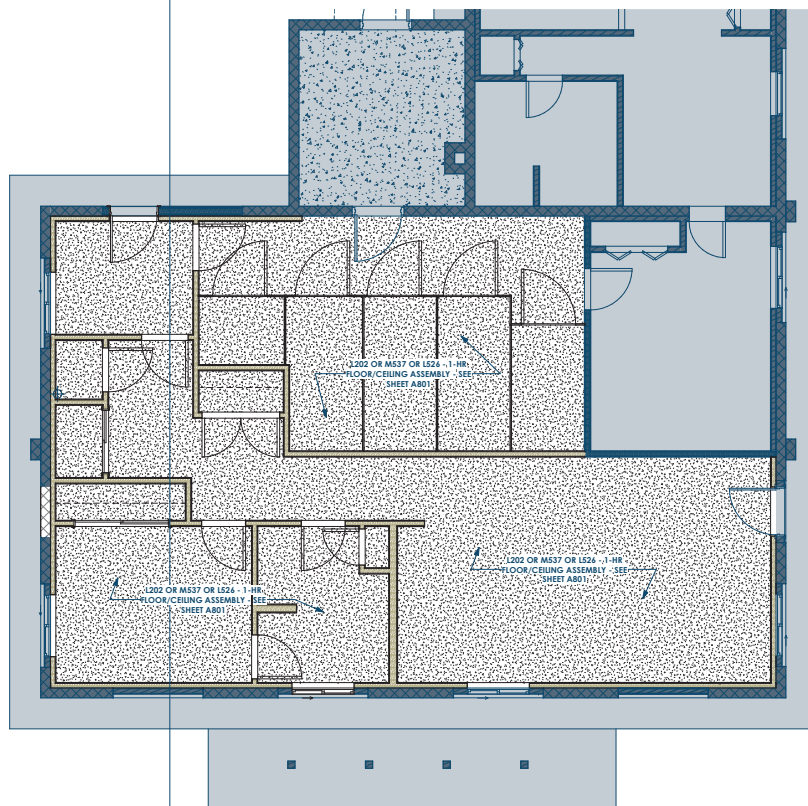
4

3

2

1

FOR PERMIT

1
A301

1 PROPOSED CEILING PLAN - LOWER LEVEL
1/4" = 1'-0"



Architect: OpeningDesign
316 W Washington Ave | Suite 675
Wausau, WI 53393
ryan@openingdesign.com | 773.425.6456

LOWER LEVEL REFLECTED CEILING PLAN - 10/20/2020
5-UNIT CONVERSION, 2248 S. SYENE ROAD
FITCHBURG, WI 53711



A121

5

4

3

2

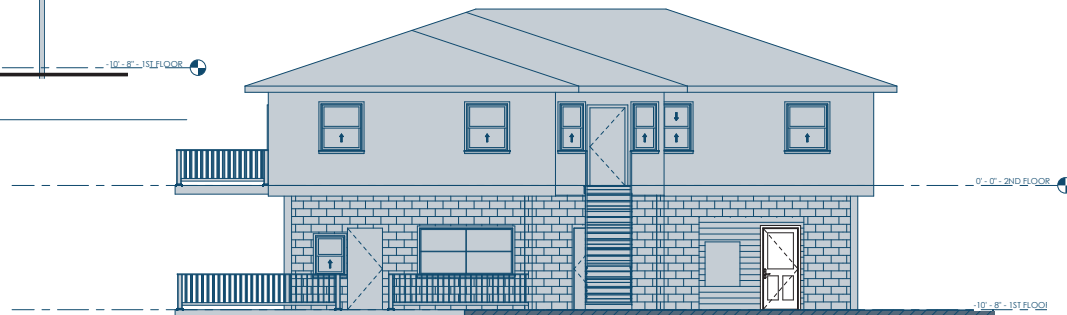
1

FOR PERMIT

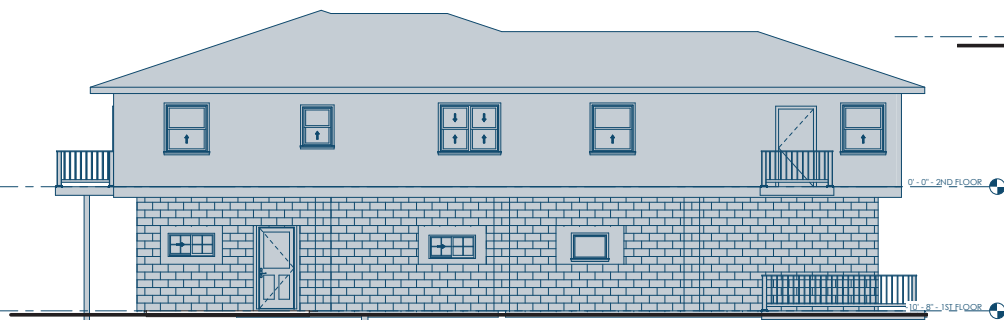
0 4' 8' 12'



WEST ELEVATION
3/16" = 1'-0"



NORTH ELEVATION
3/16" = 1'-0"



EAST ELEVATION
3/16" = 1'-0"



SOUTH ELEVATION
3/16" = 1'-0"



Architect: OpeningDesign
316 W Washington Ave | Suite 675
Wausau, WI 53983
ryan@openingdesign.com | 773.425.6456



BUILDING ELEVATIONS - 10/20/2020
5-UNIT CONVERSION, 2248 S. SYENE ROAD
FITCHBURG, WI 53711

A201

DOOR SCHEDULE				
Type Mark	Width	Height	Type Comments	
D1	2' - 10"	6' - 8"		
D2	2' - 4"	6' - 8"		
D3	5' - 0"	6' - 8"		
D4	4' - 0"	6' - 8"		
D5	3' - 4"	6' - 8"	CHAIN LINK GATE	
D6	3' - 0"	6' - 8"		
D7	3' - 0"	7' - 0"	MAX 0.77 U-FACTOR - TEMPERED GLAZING	
D8	4' - 0"	6' - 8"		

WINDOW SCHEDULE					
Type Mark	Count	Width	Height	Phase Created	Type Comments
W1	1	48"	24"	1st Phase	

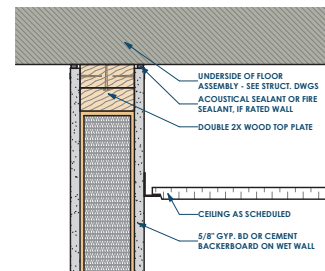
PARTITION TAG NOMENCLATURE

- 1ST LETTER = CORE MATERIAL
 - W=WOOD
 - M=METAL
 - C=CONCRETE
 - B=MASONRY BLOCK
- 2ND LETTER = SIZE OF CORE
 - WOOD: NOMINAL STUD SIZES (EX: 4 = 3 1/2")
 - METAL STUD: (EX 358 = 3 5/8")
 - CONCRETE: ACTUAL WALL THICKNESS (EX: 8 = 8")
 - MASONRY: NOMINAL BRICK MODULES (EX: 8 = 7 5/8")
- 3RD LETTER = LAYER MATERIAL

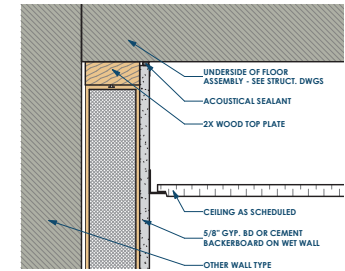
LAYER MATERIAL (3RD LETTER)						
LAYER 3	LAYER 2	LAYER 1	CORE	LAYER 1	LAYER 2	LAYER 3
A=	-	5/8" GYP. BD.	STUDS 16" O.C. (20 GA. IF METAL)	5/8" GYP. BD.	-	-
B=	-	5/8" GYP. BD.	STUDS 16" O.C. (20 GA. IF METAL)	5/8" GYP. BD.	-	-
C=	1/2" GYP. BD. OR FINISH PLYWOOD (SEE INT. ELEV.)	5/8" GYP. BD.	1/2" RESILIENT CHANNEL	STUDS 16" O.C. (20 GA. IF METAL)	5/8" GYP. BD.	-
D=	-	5/8" GYP. BD.	STUDS 16" O.C. (20 GA. IF METAL)	BAIT INSULATION	-	-
E=	-	5/8" GYP. BD.	STUDS 16" O.C. (20 GA. IF METAL)	BAIT INSULATION	-	-
M=	-	-	EXPOSED ARCHITECTURAL CMU	BAIT INSULATION	-	-
P=	5/8" GYP. BD.	5/8" GYP. BD.	1/2" RESILIENT CHANNEL	STUDS 16" O.C. (20 GA. IF METAL)	5/8" GYP. BD. OR SHEAR WALL PANELING - SEE STRUCT DWGS	5/8" GYP. BD.

- 4TH NUMBER: FIRE RATING
 - 0=0 HOUR
 - 1=1 HOUR
 - 2=2 HOUR
 - 3=3 HOUR
 - 5=5/8 HOUR
- 5TH (AND BEYOND) LETTERS = MODIFIERS
 - D=FULL HEIGHT TO UNDERSIDE OF STRUCTURAL DECKING/SHEATING
 - F=FULL HEIGHT PARTITION
 - K=KNEE WALL PARTITION
 - P=PARTIAL HEIGHT PARTITION
 - R=FURRED OUT WALL

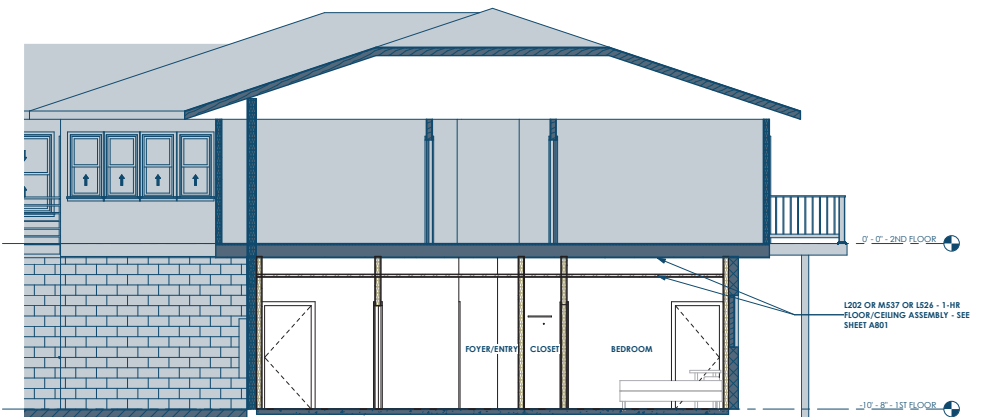
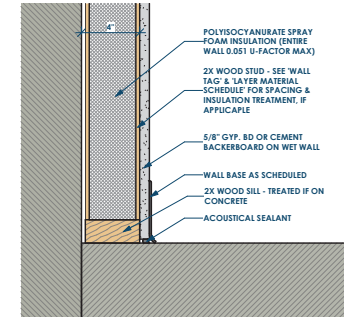
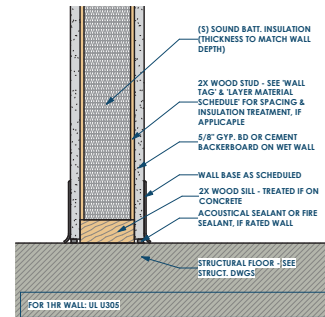
- EXAMPLE: M358B0P - A NON-FIRE RATED, BAIT INSULATED 3 5/8" PARTIAL HEIGHT WALL WITH 5/8" GYP ON ONE SIDE
- M=METAL
- 358=3 5/8" METAL STUD
- B=5/8" GYP. BD W/ BAIT INSULATION IN CAVITY
- 0=0 HOUR
- P=PARTIAL HEIGHT PARTITION
- R=FURRED OUT WALL



1 (W - F) FULL HEIGHT PARTITION
3\"/>



3 (W - D/FR) FULL HEIGHT PARTITION (NOT RATED)
3\"/>

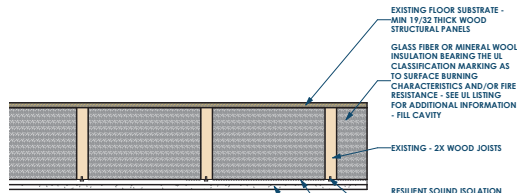


1 BUILDING SECTION
1/4\"/>

BUILDING SECTION, SCHEDULES & WINDOW TYPES - 10/20/2020
5-UNIT CONVERSION, 2248 S. SYENE ROAD
FITCHBURG, WI 53711



A301



1 FLOOR/CEILING ASSEMBLY - UL MS37 - 1HR RATED
1 1/2" = 1'-0"

EXISTING FLOOR SUBSTRATE - 15/32" THICK PLYWOOD OR 7/16" THICK ORIENTATED STRAND BOARD (OSB) WOOD STRUCTURAL PANELS

EXISTING - 2X WOOD JOISTS

EXISTING - FLOOR BRIDGING

GYPSUM BOARD - 5/8" X 4 FT WIDE GYPSUM BOARD, INSTALLED WITH LONG DIMENSION PERPENDICULAR TO CROSS TEES WITH JOINTS CENTERED ALONG MAIN RUNNERS.

DAMPER - MIN 0.070 IN. THICK (14 GAUGE) GALV STEEL DAMPER, SIZED TO OVERLAP DUCT OPENING MIN 2 IN. DAMPER PROTECTED ON BOTH SIDES WITH 1/16 IN. THICK CERAMIC FIBER PAPER LAMINATED TO THE STEEL AND HELD OPEN WITH A FUSIBLE LINK - SEE UL LISTING FOR ADDITIONAL INFORMATION

AIR DUCT - MIN 0.029 IN. THICK (22 GAUGE) GALV STEEL AIR DUCT, TOTAL AREA OF DUCT OPENINGS NOT TO EXCEED 114 SQ IN. PER EACH 100 SQ FT OF CEILING AREA.

2 FLOOR/CEILING ASSEMBLY - UL L526 - 1HR RATED
1 1/2" = 1'-0"

NOM 2 BY 4 IN. INSTALLED BETWEEN AND PERPENDICULAR TO WOOD JOISTS, AND CENTERED 5 IN. BELOW SUBFLOORING.

GLASS FIBER OR MINERAL WOOL INSULATION BEARING THE UL CLASSIFICATION MARKING AS TO SURFACE BURNING CHARACTERISTICS AND/OR FIRE RESISTANCE - SEE UL LISTING FOR ADDITIONAL INFORMATION - FILL CAVITY

NO. 12 SWG GALV. STEEL WIRE, SUPPORTED FROM 16D NAILS DRIVEN THROUGH WOOD JOISTS 5" FROM BOTTOM OF JOISTS AND BENT UPWARD AT BOTH ENDS FOR POSITIVE SUPPORT - SEE UL LISTING FOR ADDITIONAL INFORMATION

FIXTURE PROTECTION (IF NON-RATED FIXTURE) - SEE UL LISTING FOR SPECIFICS

STEEL FRAMING MEMBERS - SEE UL LISTING FOR RANGE OF OPTIONS

1 HR RATED FIXTURE (NO LIMIT ON SPACING) - OR - IF A NON-RATED FIXTURE: 2' x 4' RECESSED LIGHT FIXTURE WITH STEEL HOUSING AND FIXTURE PROTECTION - SPACED TO NOT EXCEED 24 SQ FT PER 100 SQ FT OF CEILING AREA - SEE UL LISTING FOR MORE INFORMATION

EXISTING FLOOR SUBSTRATE - 1 X 4 T&G LAID PERPENDICULAR TO JOISTS, OR 19/32" FLYWOOD WOOD STRUCTURAL PANELS

EXISTING - 2X WOOD JOISTS

EXISTING - FLOOR BRIDGING

DAMPER - NO. 12 MSG GALV. STEEL PROTECTED ON BOTH SURFACES WITH 1/16" CERAMIC FIBER PAPER AND HELD OPEN WITH A FUSIBLE LINK - SEE UL LISTING FOR ADDITIONAL INFORMATION

ACOUSTICAL MATERIAL - SEE UL LISTING FOR RANGE OF OPTIONS

GALV. STEEL WITH TOTAL AREA OF DUCT OPENING NOT TO EXCEED 113 SQ. IN. PER 100 SQ. FT. OF CEILING AREA, AREA OF INDIVIDUAL DUCT OPENING NOT TO EXCEED 113 SQ. IN. MAX. DIMENSION OF OPENING 12" - SEE UL LISTING FOR ADDITIONAL INFORMATION

3 FLOOR/CEILING ASSEMBLY - UL L202 - 1HR RATED
1 1/2" = 1'-0"

NOM 2 BY 4 IN. INSTALLED BETWEEN AND PERPENDICULAR TO WOOD JOISTS, AND CENTERED 5 IN. BELOW SUBFLOORING.

GLASS FIBER OR MINERAL WOOL INSULATION BEARING THE UL CLASSIFICATION MARKING AS TO SURFACE BURNING CHARACTERISTICS AND/OR FIRE RESISTANCE - SEE UL LISTING FOR ADDITIONAL INFORMATION - FILL CAVITY

NO. 12 SWG GALV. STEEL WIRE, SUPPORTED FROM 16D NAILS DRIVEN THROUGH WOOD JOISTS 5" FROM BOTTOM OF JOISTS AND BENT UPWARD AT BOTH ENDS FOR POSITIVE SUPPORT - SEE UL LISTING FOR ADDITIONAL INFORMATION

FIXTURE PROTECTION (IF NON-RATED FIXTURE) - SEE UL LISTING FOR SPECIFICS

STEEL FRAMING MEMBERS - SEE UL LISTING FOR RANGE OF OPTIONS

1 HR RATED FIXTURE (NO LIMIT ON SPACE) - OR - IF A NON-RATED FIXTURE: 20" X 48" / 60" OR 24" X 48" - MAX OF 16 SQ FT PER 100 SQ FT OF CEILING AREA - OR - INCANDESCENT LAMP TYPE 6.5" DIA. X 7 1/2" HIGH - (4) FIXTURES PER 100 SQ FT OF CEILING AREA (USE FIXTURE)

PENETRATIONS AT HORIZ. ASSEMBLIES:

PERMITTED PENETRATIONS

- PENETRATING ITEMS (STEEL, FERROUS OR COPPER CONDUITS, PIPES, TUBES OR VENTS OR CONCRETE OR MASONRY) WITH A MAX. 6" DIAMETER SHALL NOT BE LIMITED TO THE PENETRATION PROVIDED THE AGGREGATE AREA OF THE OPENINGS THROUGH THE ASSEMBLY DOES NOT EXCEED 144 SQ. IN. IN ANY 100 SQ. FT. OF FLOOR AREA.
- PENETRATIONS BY LISTED ELECTRICAL BOXES OF ANY MATERIAL, PROVIDED SUCH BOXES HAVE BEEN TESTED FOR USE IN FIRE-RESISTANCE-RATED ASSEMBLIES.

MEMBRANE PENETRATIONS

- THE FOLLOWING CANNOT EXCEED 100 SQ. IN. IN ANY 100 SQ. FT. OF CEILING AREA WITH A MAXIMUM 1/8" ANNULAR SPACE (STEEL, FERROUS OR COPPER CONDUITS, PIPES, TUBES OR VENTS, OR CONCRETE OR MASONRY OR STEEL ELECTRICAL BOXES THAT DO NOT EXCEED 16 SQUARE INCHES)
- THE CEILING MEMBRANE OF 1- AND 2-HOUR FIRE-RESISTANCE-RATED HORIZONTAL ASSEMBLIES IS PERMITTED TO BE INTERRUPTED WITH THE DOUBLE WOOD TOP PLATE OF A WALL ASSEMBLY THAT IS SHEATHED WITH TYPE X GYPSUM WALLBOARD



Architect: OpeningDesign
316 W Washington Ave | Suite 675
Wiscasset, WI 53093
ryan@openingdesign.com | 773.425.6456



CEILING DETAILS - 10/20/2020
5-UNIT CONVERSION, 2248 S. SYENE ROAD
FITCHBURG, WI 53711

A801