

RETAIL AT CLOCK TOWER COURT

6618-6654 MINERAL POINT RD, MADISON, WI

// PROPERTY SUMMARY



PROPERTY DESCRIPTION

Prime retail space available in busy shopping center on Mineral Point Rd. In-line Retail 1,317 SF previous 9 Round Gym space with lighted building signage and Mineral Point Rd Frontage. Space has ample on-site parking available. Also, 3 small interior retail spaces in a mall type setting with 540 SF, 937, or 1,275 SF on gross lease/monthly rent. Tax & CAM approximately \$7.29 PSF High traffic counts of 29,800 average cars per day.

PROPERTY HIGHLIGHTS

- Great location in a popular retail center
- In-line Retail with Mineral Pt Rd Frontage
- Lighted Building Signage available
- 29,800 cars per day on Mineral Point Rd
- Hallway spaces are gross+ gas, electric, water, and janitorial

OFFERING SUMMARY

Lease Rate:	\$1,000.00 - 2,100.00 per month (Gross; NNN)
Number of Units:	19
Available SF:	540 - 1,317 SF
Building Size:	30,000 SF

DEMOGRAPHICS	1 MILE	3 MILES	5 MILES
Total Households	4,243	38,973	68,698
Total Population	8,653	86,249	157,070
Average HH Income	\$85,065	\$81,944	\$85,623

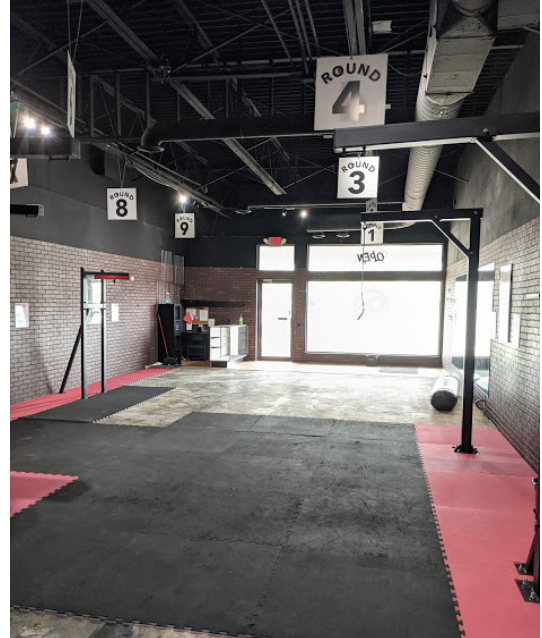
RETAIL AT CLOCK TOWER COURT

6618-6654 MINERAL POINT RD, MADISON, WI

// SUITE 6636 INLINE RETAIL



6636 Mineral Point - Inline Retail Front



6636 Mineral Point Rd



6636 Mineral Point Rd



6636 Mineral Point Rd

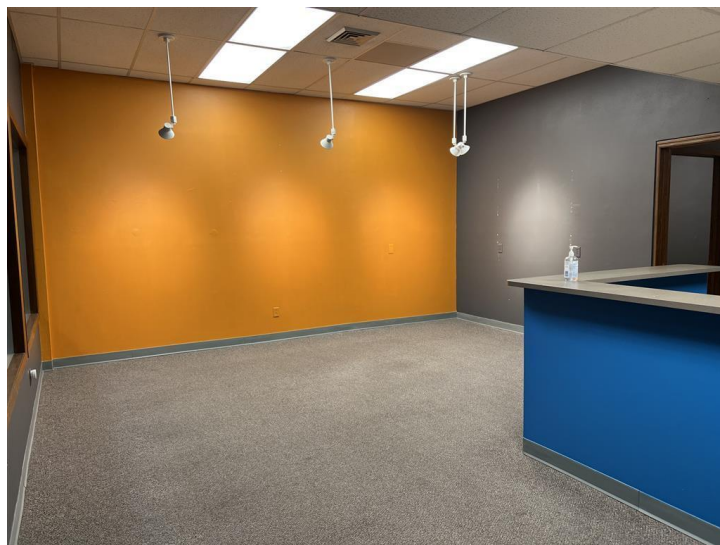
RETAIL AT CLOCK TOWER COURT

6618-6654 MINERAL POINT RD, MADISON, WI

// SUITE 6614 INTERIOR MALL SPACE



Suite 6614



Suite 6614



Suite 6614

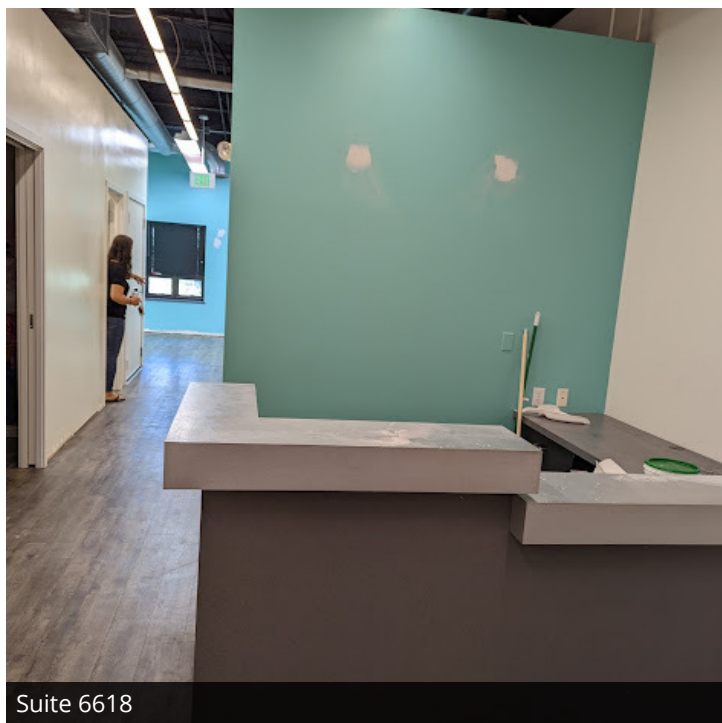
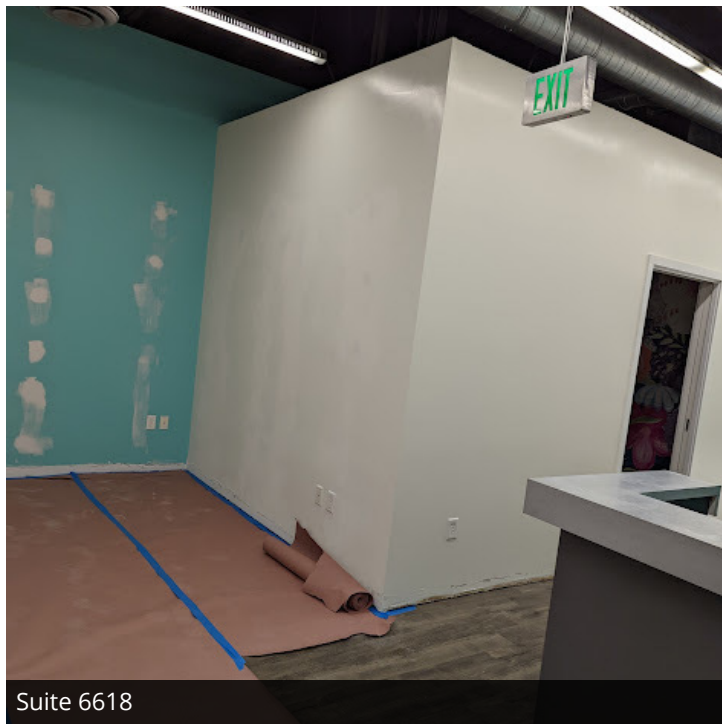


Suite 6614

RETAIL AT CLOCK TOWER COURT

6618-6654 MINERAL POINT RD, MADISON, WI

// SUITE 6618 INTERIOR MALL SPACE

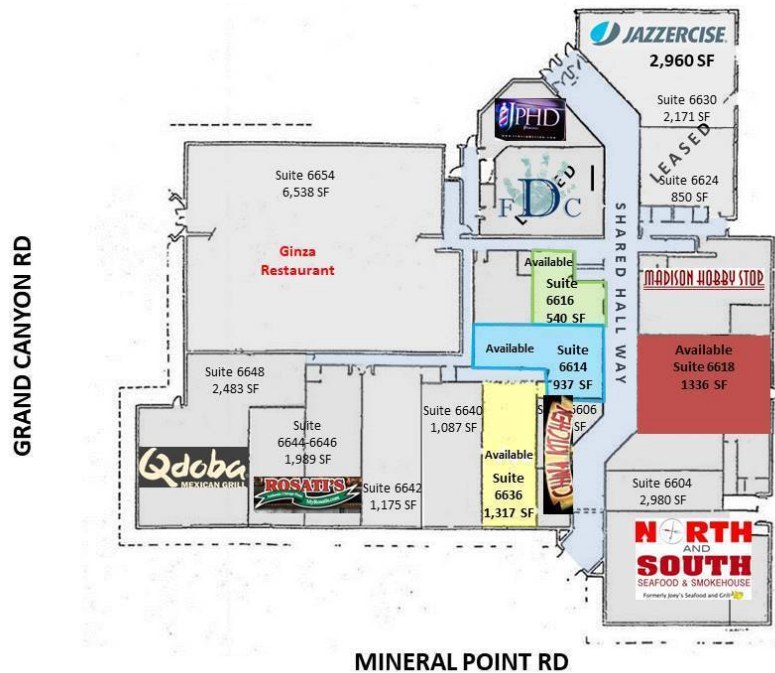


RETAIL AT CLOCK TOWER COURT

6618-6654 MINERAL POINT RD, MADISON, WI

// AVAILABLE SPACES

LEASE TYPE | Gross; NNN **TOTAL SPACE** | 540 - 1,317 SF **LEASE TERM** | 12 months **LEASE RATE** | \$1,000.00 - \$2,100.00 per month



SUITE	TENANT	SIZE (SF)	LEASE TYPE	LEASE RATE	DESCRIPTION
6636 Mineral Point	Available	1,317 SF	NNN	\$12.00 SF/yr	Previous 9 Round gym. Mostly open bay with large front windows, glass entry door and lighted signage.
6614	Available	937 SF	Gross	\$1,500 per month	Small retail / office space with mostly open area, 2 'exam' rooms and back office area. Previously optometrist.
6616	Available	540 SF	Gross	\$1,000 per month	Small retail / office space with mostly open area, that was previously a nail salon. Building signage may be available.
6618	Available	1,275 SF	Gross	\$2,100 per month	1,275 sf former skin & co. clinic for lease in the Clock Tower shopping center. Reception, 3 offices, a lab area.

1,336 SF

RESTROOM

SHARED HALL

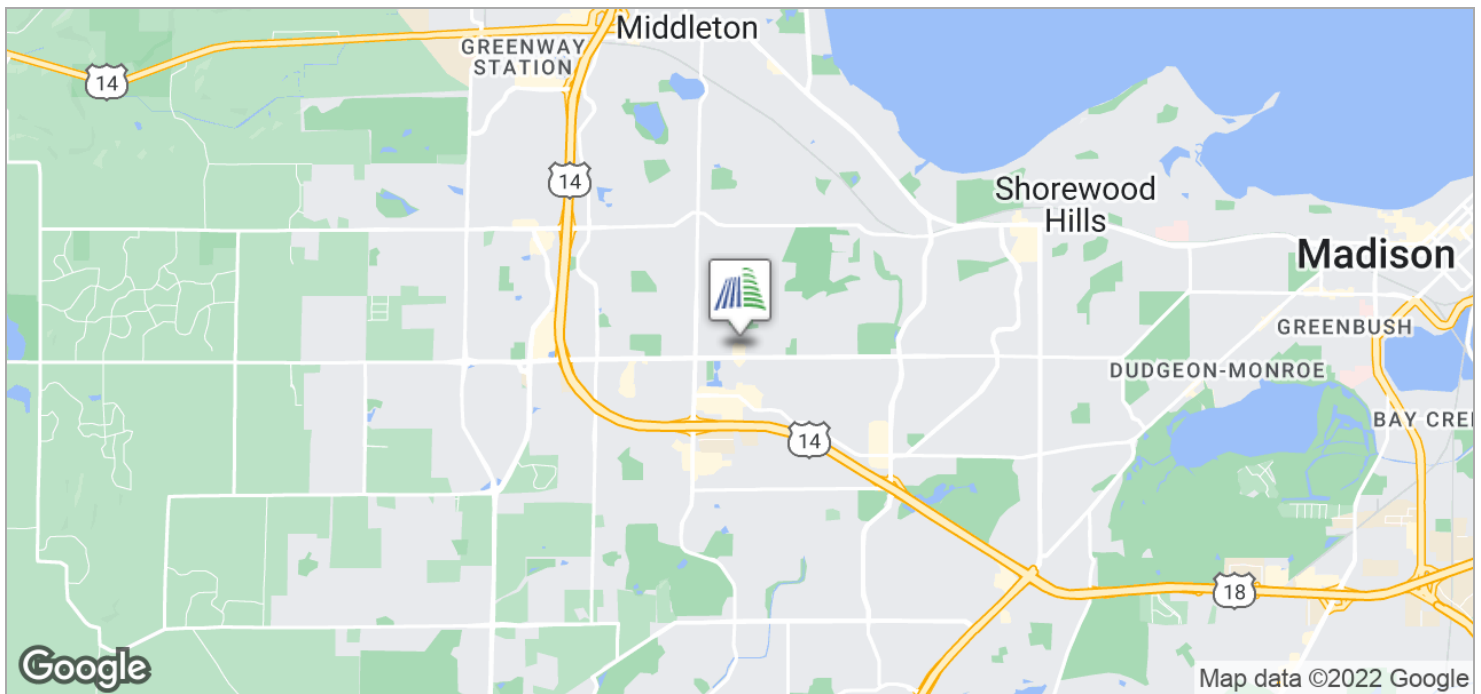
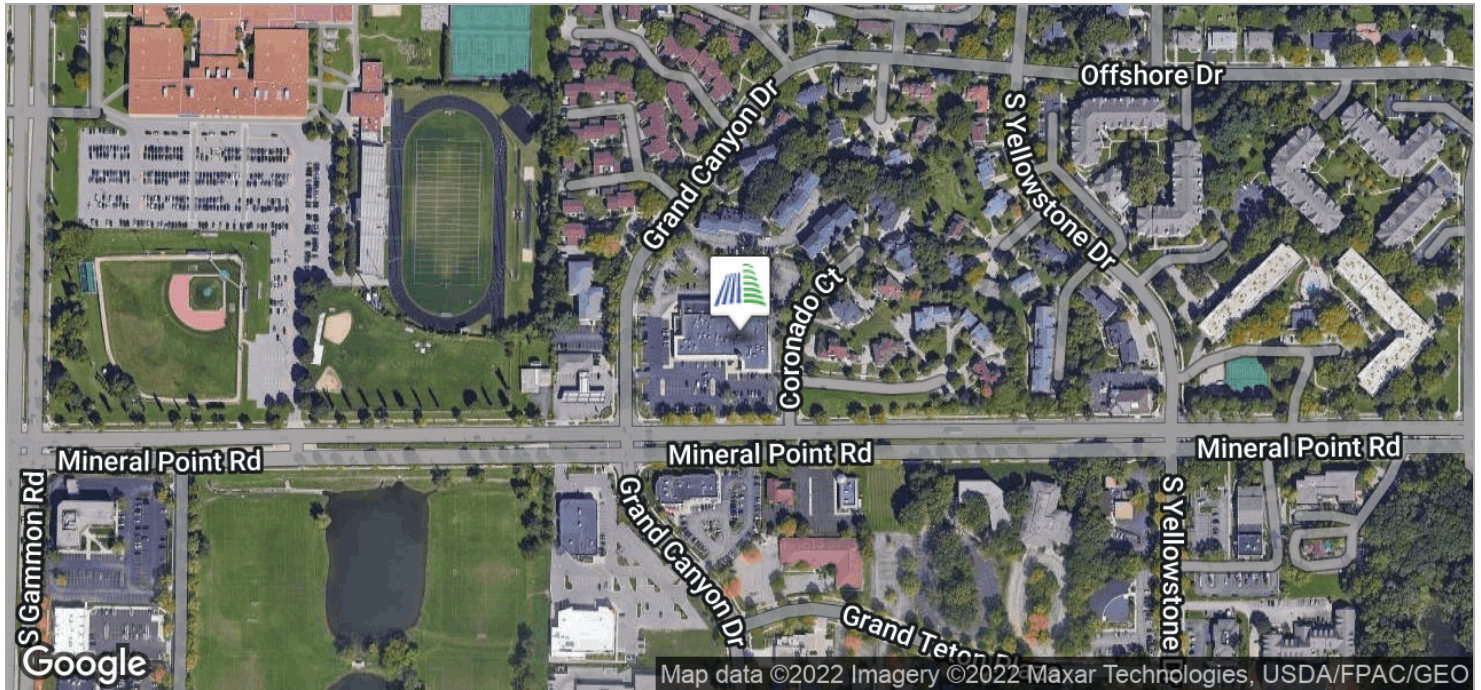
Dimensions:

- Overall Width: 33' - 7 3/16"
- Overall Depth: 17' - 0"
- Room Depth: 13' - 8"
- Room Width: 15' - 13/16"
- Room Depth: 17' - 13/16"
- Room Width: 6' - 7 3/16"
- Room Depth: 10' - 9 19/32"
- Room Width: 43' - 10 13/16"
- Room Depth: 6' - 0"
- Room Width: 15' - 0"
- Room Depth: 9' - 0"
- Room Width: 11' - 6"
- Room Depth: 7' - 0"
- Room Width: 4' - 4 13/16"
- Room Depth: 9' - 3 19/32"
- Room Width: 9' - 3 19/32"
- Room Depth: 6' - 7 3/16"
- Room Width: 25' - 7 3/32"

RETAIL AT CLOCK TOWER COURT

6618-6654 MINERAL POINT RD, MADISON, WI

// LOCATION MAPS



WI DISCLOSURE TO NON-RESIDENTIAL CUSTOMERS

WISCONSIN REALTORS® ASSOCIATION
4801 Forest Run Road, Madison, WI 53704

Altus Comm R/E Inc
Effective July 1, 2016

DISCLOSURE TO NON-RESIDENTIAL CUSTOMERS

1 Prior to negotiating on your behalf the brokerage firm, or an agent associated with the firm, must provide you the
2 following disclosure statement:

3 **DISCLOSURE TO CUSTOMERS** You are a customer of the brokerage firm (hereinafter Firm). The Firm is either an agent
4 of another party in the transaction or a subagent of another firm that is the agent of another party in the transaction. A
5 broker or a salesperson acting on behalf of the Firm may provide brokerage services to you. Whenever the Firm is
6 providing brokerage services to you, the Firm and its brokers and salespersons (hereinafter Agents) owe you, the
7 customer, the following duties:

8 (a) The duty to provide brokerage services to you fairly and honestly.

9 (b) The duty to exercise reasonable skill and care in providing brokerage services to you.

10 (c) The duty to provide you with accurate information about market conditions within a reasonable time if you request
11 it, unless disclosure of the information is prohibited by law.

12 (d) The duty to disclose to you in writing certain Material Adverse Facts about a property, unless disclosure of the
13 information is prohibited by law (see lines 42-51).

14 (e) The duty to protect your confidentiality. Unless the law requires it, the Firm and its Agents will not disclose your
15 confidential information or the confidential information of other parties (see lines 23-41).

16 (f) The duty to safeguard trust funds and other property held by the Firm or its Agents.

17 (g) The duty, when negotiating, to present contract proposals in an objective and unbiased manner and disclose the
18 advantages and disadvantages of the proposals.

19 Please review this information carefully. An Agent of the Firm can answer your questions about brokerage services,
20 but if you need legal advice, tax advice, or a professional home inspection, contact an attorney, tax advisor, or home
21 inspector. This disclosure is required by section 452.135 of the Wisconsin statutes and is for information only. It is a
22 plain-language summary of the duties owed to a customer under section 452.133(1) of the Wisconsin statutes.

23 **CONFIDENTIALITY NOTICE TO CUSTOMERS** The Firm and its Agents will keep confidential any information given to the
24 Firm or its Agents in confidence, or any information obtained by the Firm and its Agents that a reasonable person
25 would want to be kept confidential, unless the information must be disclosed by law or you authorize the Firm to
26 disclose particular information. The Firm and its Agents shall continue to keep the information confidential after the
27 Firm is no longer providing brokerage services to you.

28 The following information is required to be disclosed by law:

29 1. Material Adverse Facts, as defined in Wis. Stat. § 452.01(5g) (see lines 42-51).

30 2. Any facts known by the Firm or its Agents that contradict any information included in a written inspection
31 report on the property or real estate that is the subject of the transaction.

32 To ensure that the Firm and its Agents are aware of what specific information you consider confidential, you may
33 list that information below (see lines 35-41) or provide that information to the Firm or its Agents by other means. At a
34 later time, you may also provide the Firm or its Agents with other Information you consider to be confidential.

35 **CONFIDENTIAL INFORMATION:** _____

36 _____

37
38 **NON-CONFIDENTIAL INFORMATION** (the following information may be disclosed by the Firm and its Agents): _____

39 _____

40 _____

41 _____ (Insert information you authorize to be disclosed, such as financial qualification information.)

42 **DEFINITION OF MATERIAL ADVERSE FACTS**

43 A "Material Adverse Fact" is defined in Wis. Stat. § 452.01(5g) as an Adverse Fact that a party indicates is of such
44 significance, or that is generally recognized by a competent licensee as being of such significance to a reasonable
45 party, that it affects or would affect the party's decision to enter into a contract or agreement concerning a transaction
46 or affects or would affect the party's decision about the terms of such a contract or agreement.

47 An "Adverse Fact" is defined in Wis. Stat. § 452.01(1e) as a condition or occurrence that a competent licensee
48 generally recognizes will significantly and adversely affect the value of the property, significantly reduce the structural
49 integrity of improvements to real estate, or present a significant health risk to occupants of the property; or information
50 that indicates that a party to a transaction is not able to or does not intend to meet his or her obligations under a
51 contract or agreement made concerning the transaction.

52 **NOTICE ABOUT SEX OFFENDER REGISTRY** You may obtain information about the sex offender registry and persons
53 registered with the registry by contacting the Wisconsin Department of Corrections on the Internet at
54 <http://www.doc.wi.gov> or by telephone at 608-240-5830.

No representation is made as to the legal validity of any provision or the adequacy of any provision in any specific transaction.
Copyright © 2016 by Wisconsin REALTORS® Association Drafted by Attorney Debra Peterson Conrad

Altus Comm R/E Inc, 6527 Normandy Ln, Ste 201 Madison WI 53719
Jeff Jansen

Produced with zipForm® by zipLogix 18070 Fifteen Mile Road, Fraser, Michigan 48026 www.zipLogix.com

Phone: 608-338-0055

Fax: 608-821-1402

Forms