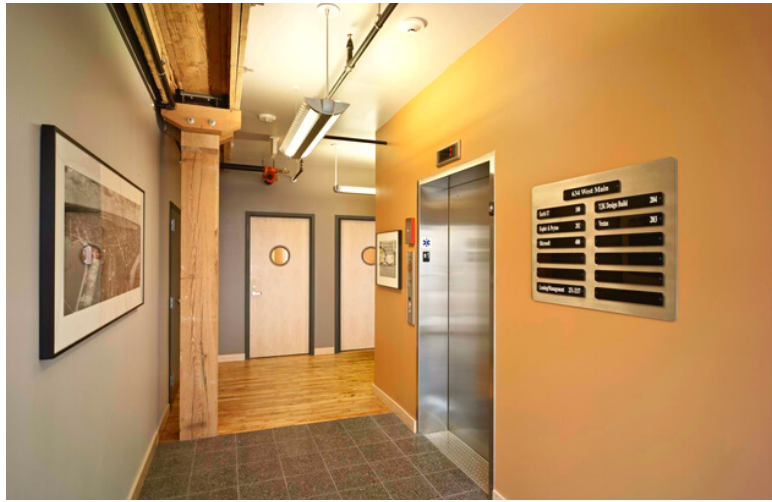


SUITE 201

634 W MAIN STREET MADISON, WI 53703



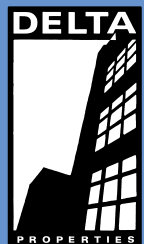
PROPERTY FEATURES

TYPE: OFFICE

AVAILABLE: JAN. 2023

SIZE : 5,197 RSF

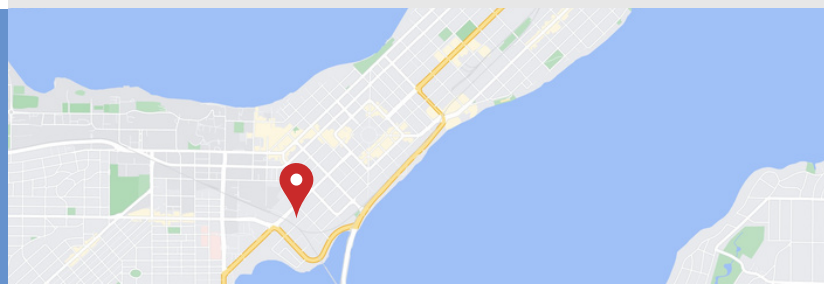
- 10 PRIVATE OFFICES
- 2 CONFERENCE ROOMS
- OPEN WORK AREA, RECEPTION & BREAK AREA
- EXPOSED BRICK, WOOD BEAMS & ABUNDANT NATURAL LIGHTING
- OPERABLE WINDOWS
- ENERGY EFFICIENT LIGHT FIXTURES
- HIGH EFFICIENCY HVAC & MERV13 AIR FILTERS
- SHOWER FACILITIES
- ADA ACCESSIBLE
- AMPLE SURFACE PARKING & INDOOR BIKE PARKING
- ONSITE MANAGEMENT



(608)251-3337

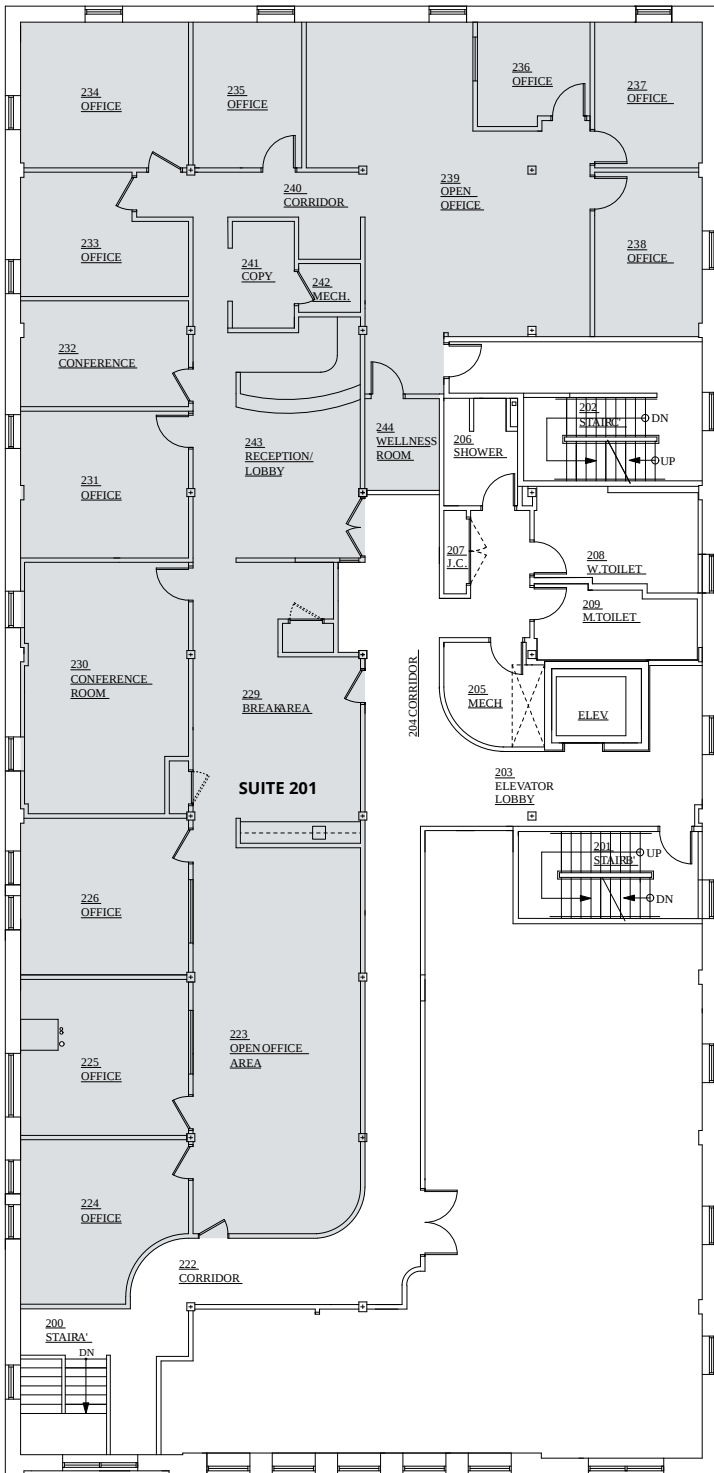
JUDY@DELTA-PROPERTIES.COM

WWW.DELTA-PROPERTIES.COM

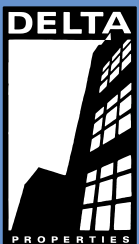
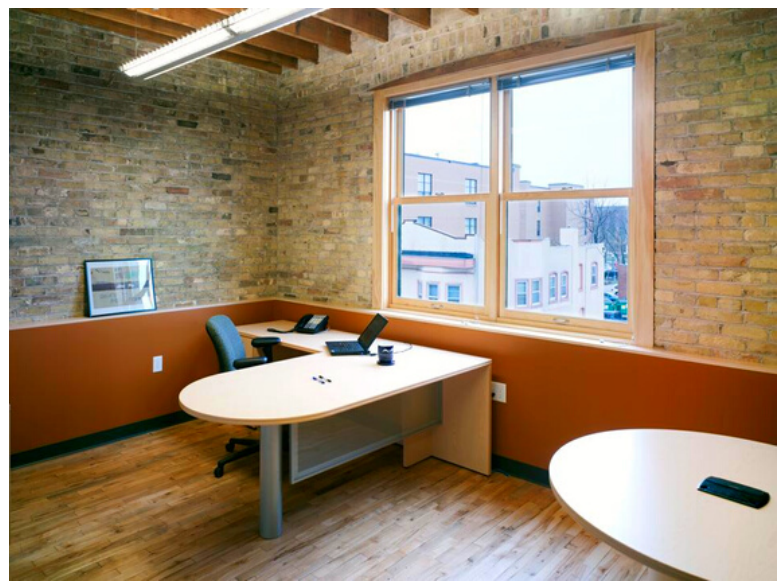
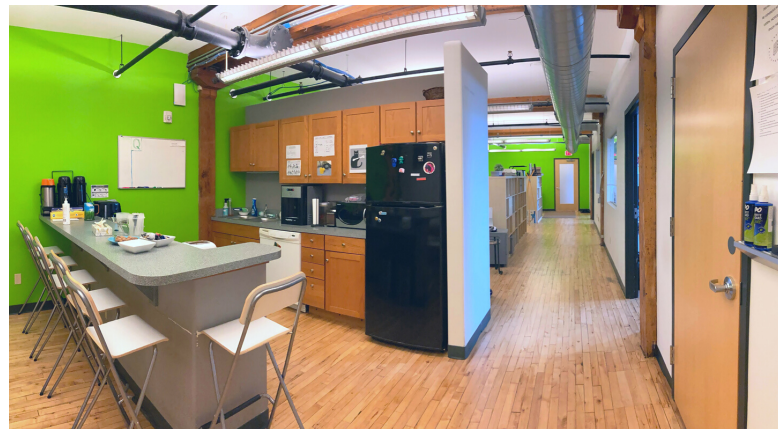


SUITE 201

634 W MAIN STREET MADISON, WI 53703



EXISTING FLOORPLAN



(608)251-3337

JUDY@DELTA-PROPERTIES.COM

WWW.DELTA-PROPERTIES.COM

