

High Point Plaza

7617 Mineral Point Rd
Madison, WI 53717



Available for Lease

Office Space

Inside:

- Property Summary
- Floor Plans
- Local Map
- Area and Site Overview

Property Summary

Located on Madison’s near west side, just off the 12/18 Beltline Highway and three blocks west of West Towne Mall, High Point Plaza offers premier, centrally located commercial office space. The building is within walking distance of several dining and shopping destinations.

Building Description: Three-story multi-tenant office building. Each unit has a private entrance with eight foot doors that access common hallways to elevators, stairs, and restrooms. A central atrium spans all three floors and is capped with a skylight bringing natural light into the building.

Space Availability:	Suite 150	2,900 RSF (private entrance)
	Suite 200	3,594 RSF
	Suite 202	5,164 RSF

Lease Rate: \$12.00/SF/YR NNN

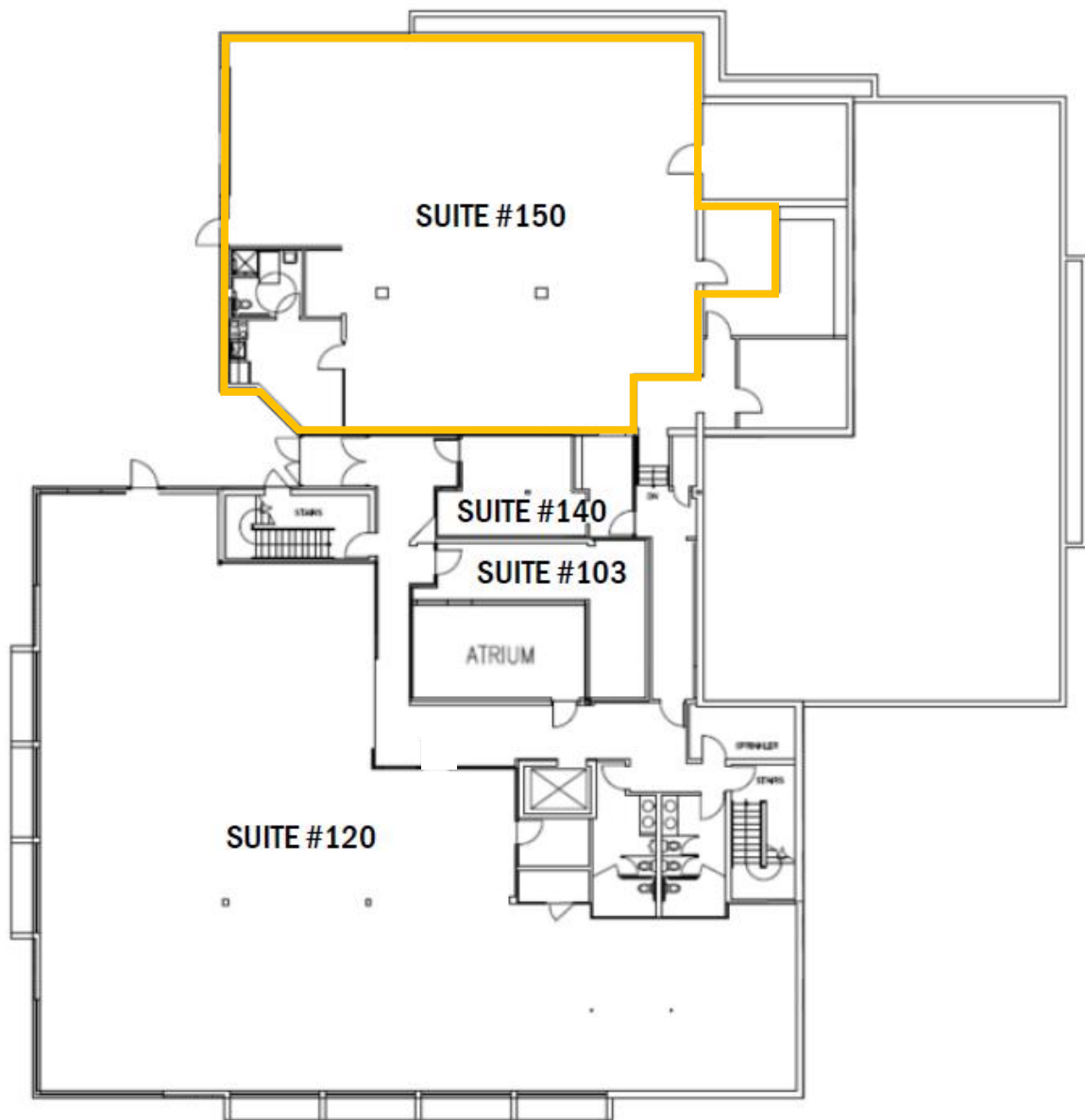
Occupancy: Immediate

Improvements: Negotiable

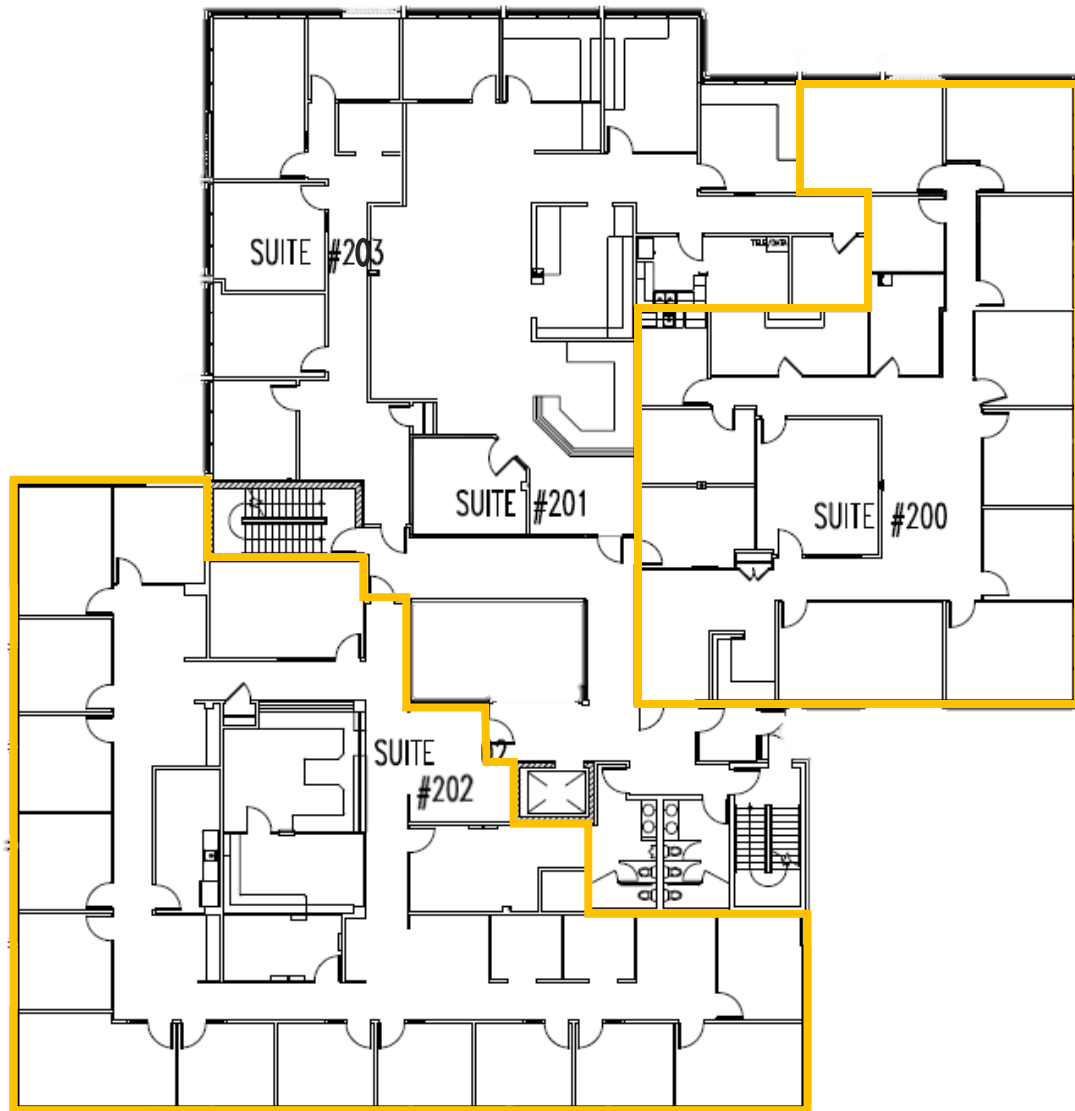
Parking: Ample surface parking

- Amenities:**
- Easy access to downtown Madison, Middleton, and surrounding suburbs
 - Private entrance to each office with 8-foot doors
 - Tenant signage visible from Mineral Point Road
 - Beautifully landscaped grounds surround the building
 - Mix of financial, medical, and technology firms
 - Professionally managed by Compass Properties

First Floor – 2,900 RSF



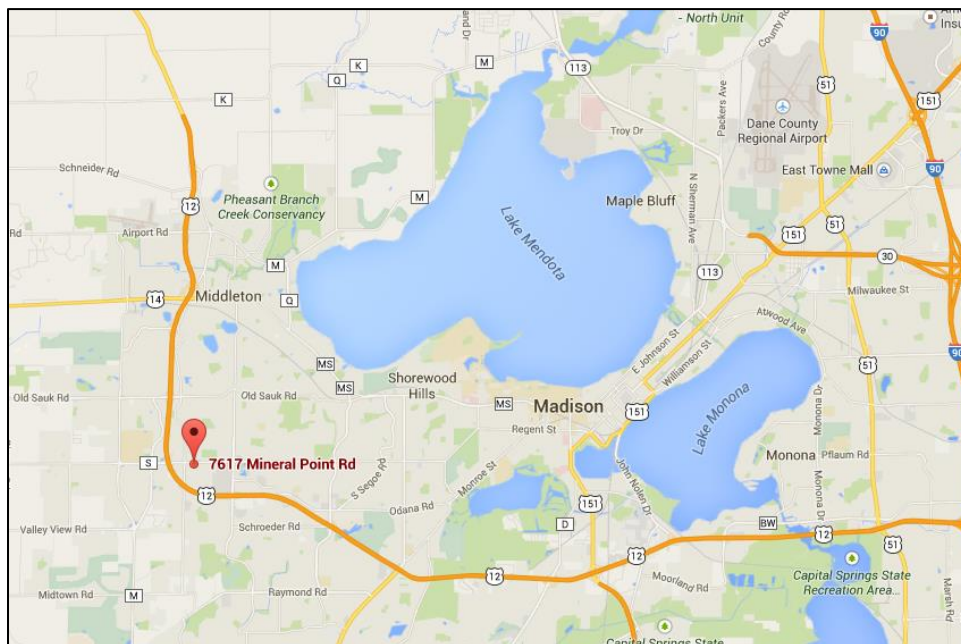
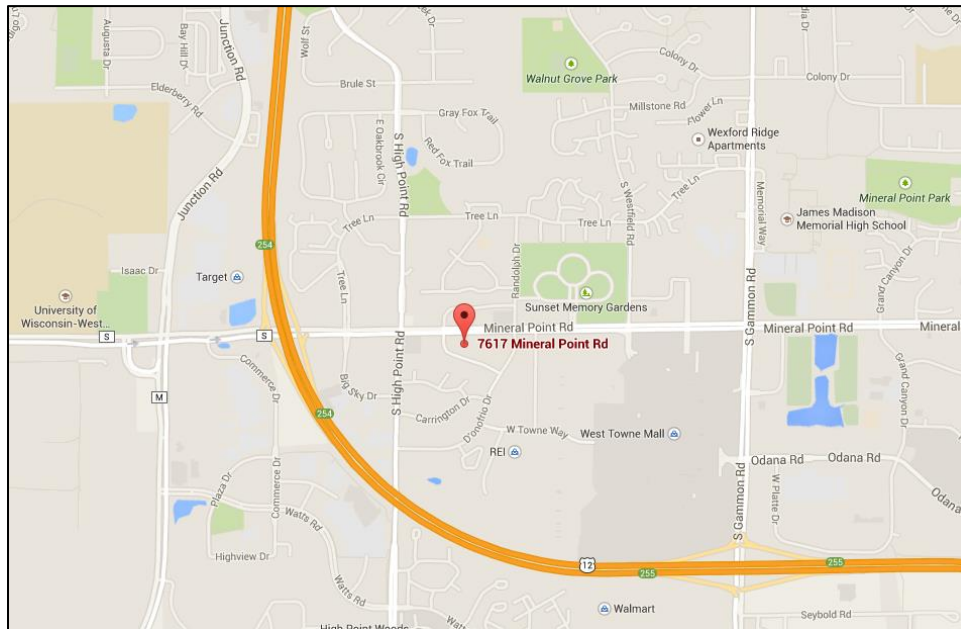
Second Floor – 1,360 to 5,164 RSF



Location

High Point Plaza is located three blocks west of West Towne Mall, on Mineral Point Road (26,600 CPD). Easy access to and from the 12/18 Beltline Highway. There are several restaurants and stores within walking distance of the building.

Less than 30 minute drive (17 miles) to the Dane County Regional Airport and 20 minutes (8 miles) to downtown Madison.



Area and Site Overview

