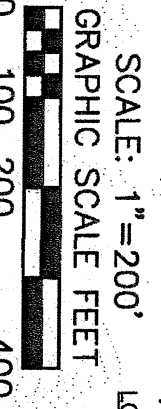
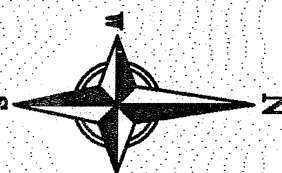
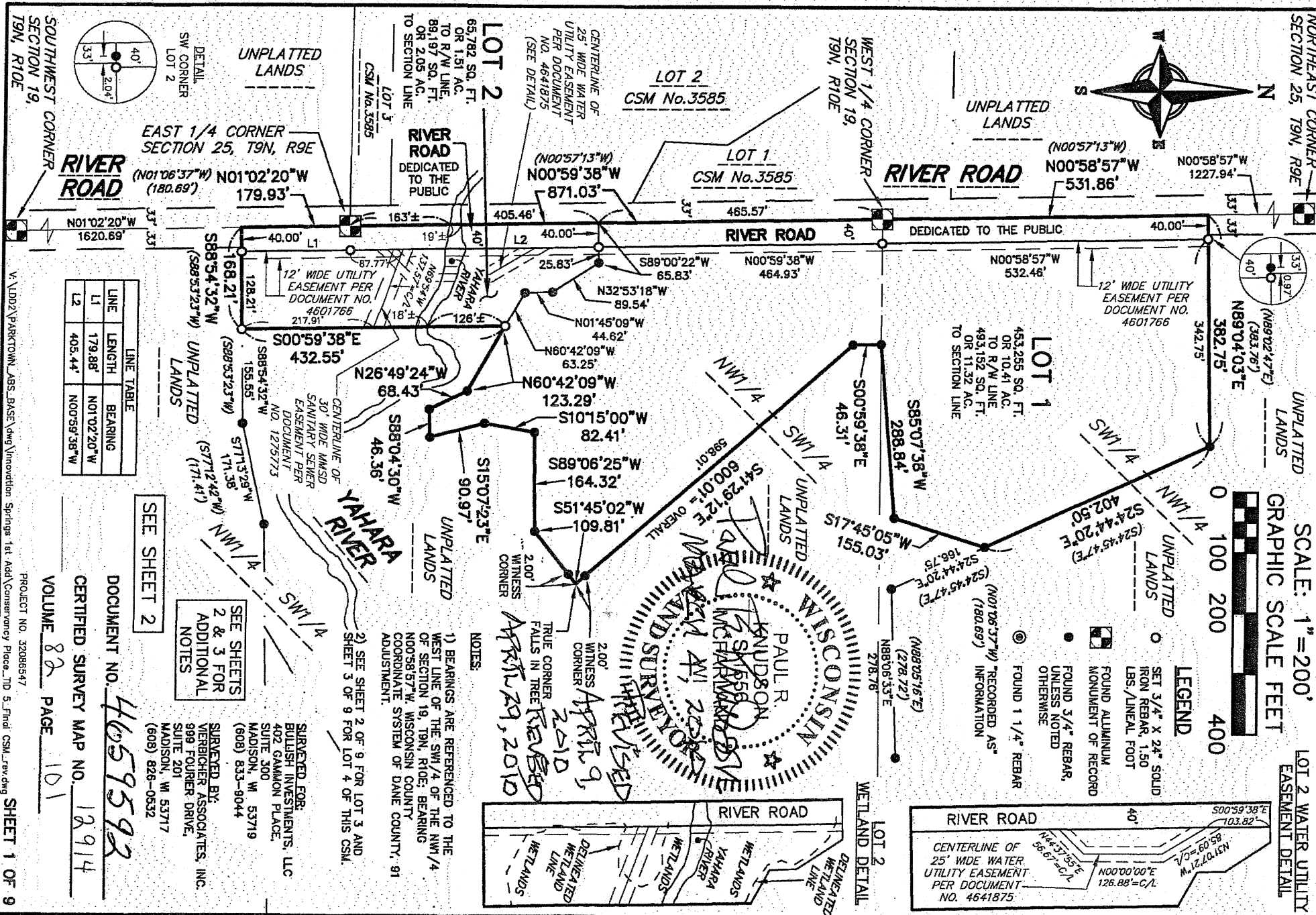
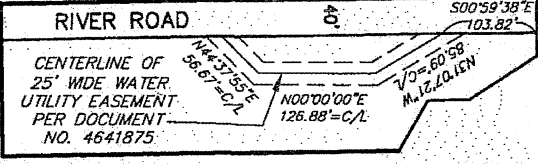


# CERTIFIED SURVEY MAP

PART OF THE SW1/4 OF THE NW1/4, NW1/4 OF THE SW1/4, SW1/4 OF THE SW1/4 OF SECTION 19, AND PART OF THE NW1/4 OF THE NW1/4, SW1/4 OF THE NW1/4, SE1/4 OF THE NW1/4, NE1/4 OF THE NW1/4 OF SECTION 30, AND PART OF VACATED SCIENCE DRIVE, ALL IN T9N, R10E, VILLAGE OF DEFOREST, DANE COUNTY, WISCONSIN



LOT 2 WATER UTILITY EASEMENT DETAIL



LINE TABLE		
LINE	LENGTH	BEARING
L1	179.88'	N01°02'20\"/>
L2	405.44'	N00°59'38\"/>

SEE SHEET 2

SEE SHEETS 2 & 3 FOR ADDITIONAL NOTES

- NOTES:
- 1) BEARINGS ARE REFERENCED TO THE WEST LINE OF THE SW1/4 OF THE NW1/4 OF SECTION 19, T9N, R10E; BEARING N00°58'57\"/>
  - 2) SEE SHEET 2 OF 9 FOR LOT 3 AND SHEET 3 OF 9 FOR LOT 4 OF THIS CSM.

SURVEYED FOR:  
**BULLISH INVESTMENTS, LLC**  
 402 GAMMON PLACE,  
 SUITE 300  
 MADISON, WI 53719  
 (608) 833-9044

SURVEYED BY:  
**VERICHER ASSOCIATES, INC.**  
 999 FOURIER DRIVE,  
 SUITE 201  
 MADISON, WI 53717  
 (608) 826-0532

DOCUMENT NO. **4659592**  
 CERTIFIED SURVEY MAP NO. **12914**

VOLUME **82** PAGE **101**

PROJECT NO. 32086547 SHEET 1 OF 9

9/27