

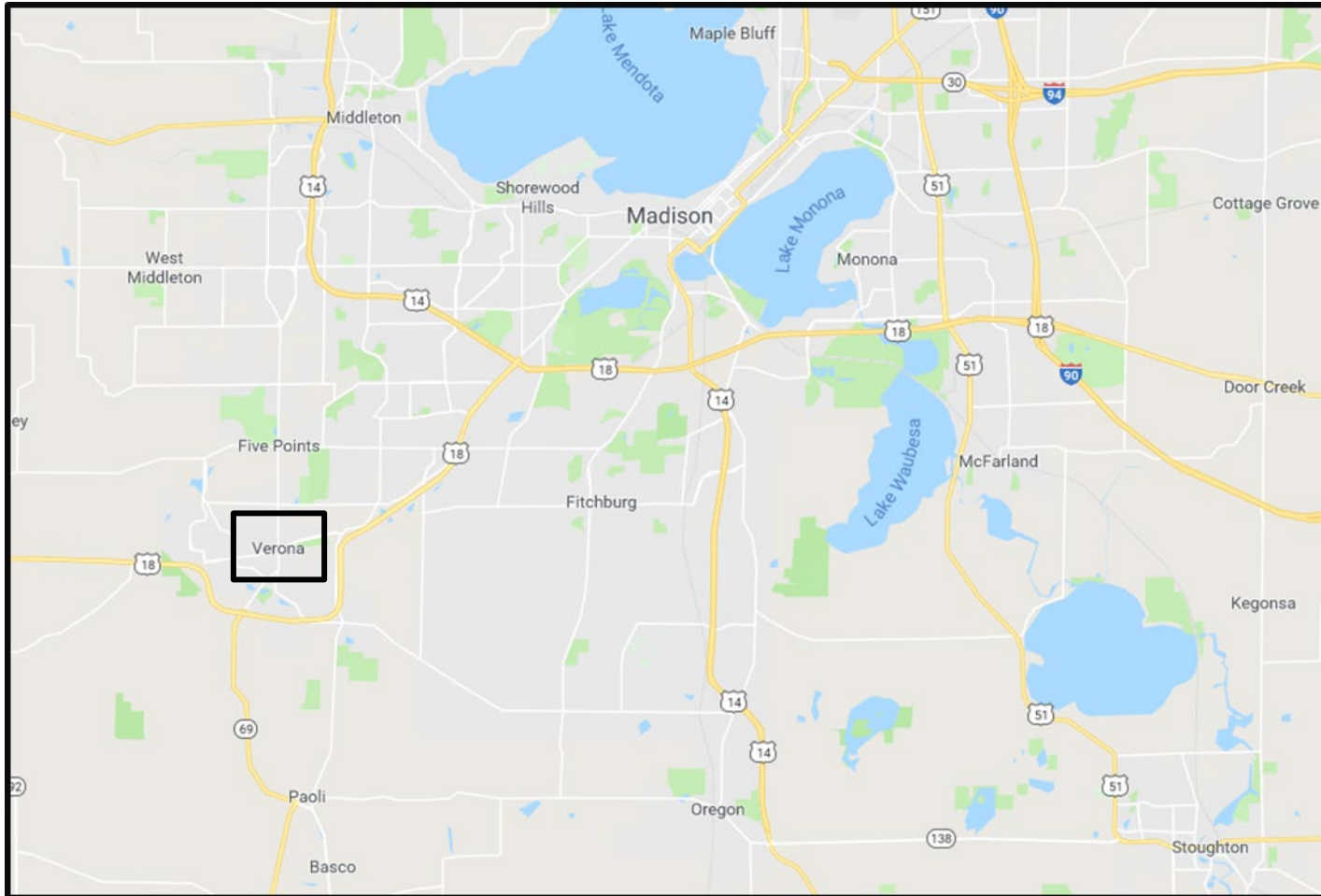


SLABY & ASSOCIATES

Keenan Court Commercial

Verona, WI

For Lease



Verona is located in Dane County, 10 miles southwest of Madison.



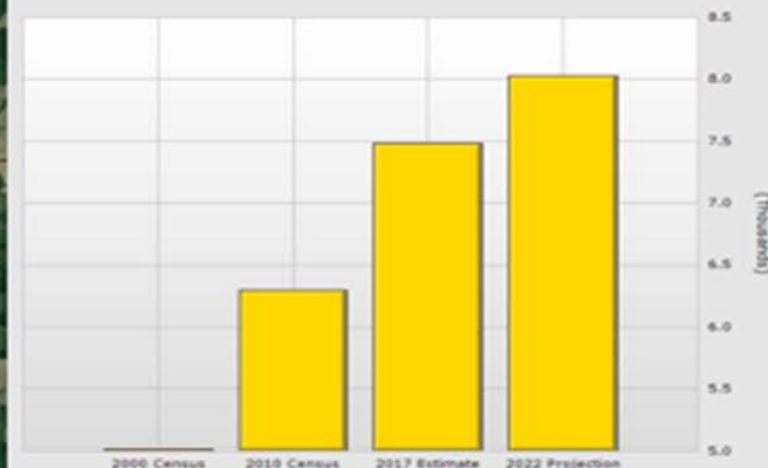
Population for 1 Mile Radius

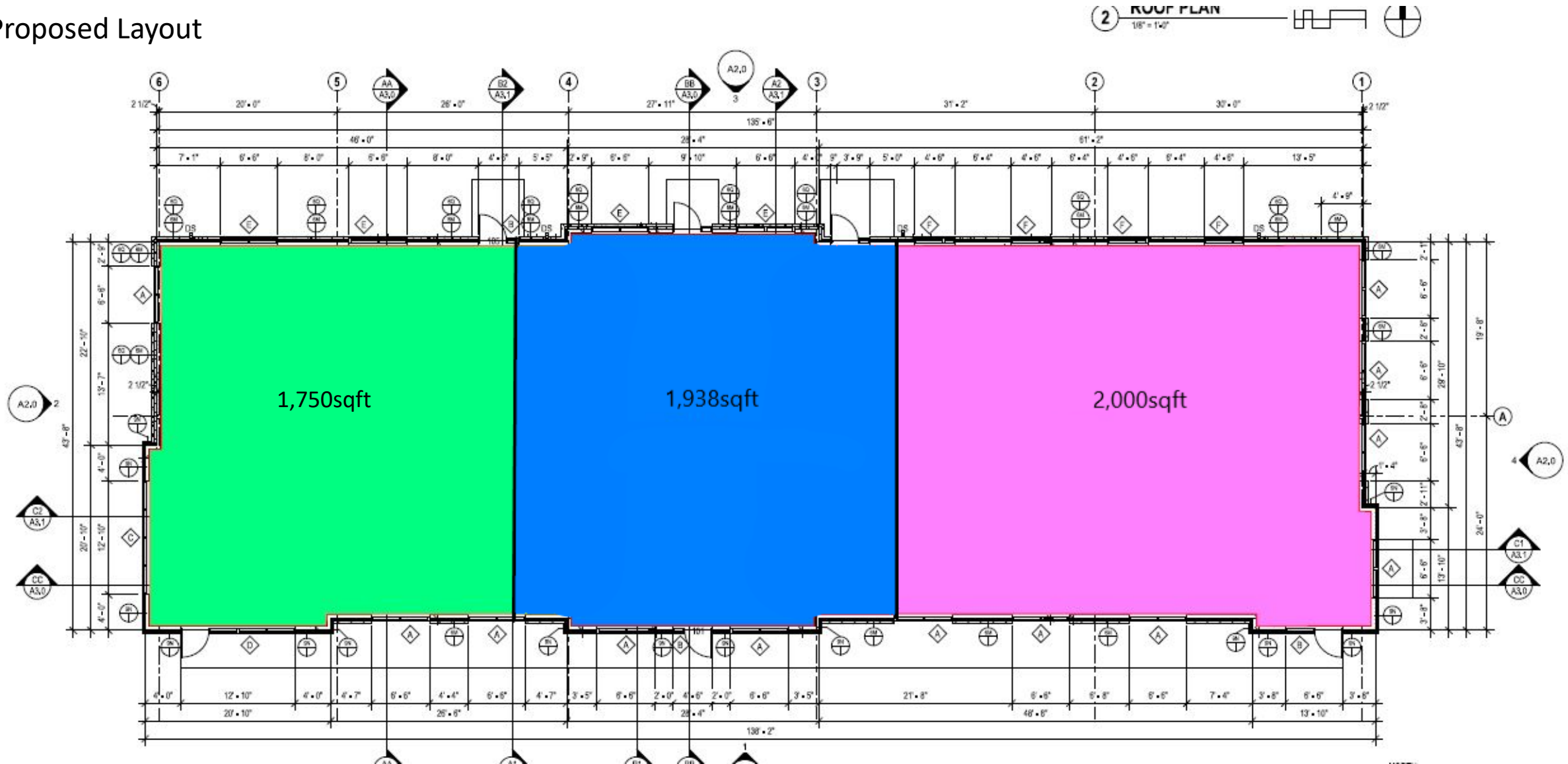
118 W Verona Ave, Verona, WI 53593

Population	1 Mile	3 Mile	5 Mile
2017 Total Population:	7,480	31,291	75,461
2022 Population:	8,029	33,431	80,384
Pop Growth 2017-2022:	7.34%	6.84%	6.52%
Average Age:	37.90	35.60	36.10

Households			
2017 Total Households:	3,053	12,662	31,522
HH Growth 2017-2022:	7.57%	6.91%	6.55%
Median Household Inc:	\$82,634	\$89,084	\$75,640
Avg Household Size:	2.40	2.40	2.40
2017 Avg HH Vehicles:	2.00	2.00	2.00

Housing			
Median Home Value:	\$255,397	\$259,962	\$260,884
Median Year Built:	1994	1999	1992







- Fall Availability
- Price:
\$19.00/sqft
NNN
- 1-month rent
and C.A.M. for
security
deposit
- Minimum
space 1,250
sqft.
- Maximum
5,638sqft

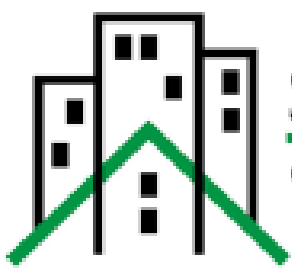
Red dot/pin = location

- Close to major brand name stores!
- Nearby schools and daycares
- HWY 18 off to the right!
- Easy stop light access
- Baseball park and hockey/ice skating arena just down the road



Established Businesses....





SLABY & ASSOCIATES
COMMERCIAL REAL ESTATE
BROKERAGE

1100 John P Livesey Blvd, Verona, WI 53593
Office: 608-333-4130 Fax: 608-845-2296
<https://slabyandassociates.com>

Please Call or Email with Any Questions!

Dean Slaby

President

Email: DeanS@slabyandassociates.com

Mobile: 608-219-8506