

For Sublease



2101 N. Sherman Avenue

2101 N. Sherman Avenue,
Madison, WI 53704

Features:

- Corner lot
- Building signage
- High traffic visibility
- Easy access to the airport

Space Profile:

RSF	3,310 SF
Rent	<ul style="list-style-type: none"> • \$3,600/month + maintenance, snow, landscape, & utilities • Landlord pays RE taxes & insurance
Availability	Immediate
Traffic	12,300 VPD
Parking	11 Stalls

Contact:



TJ Blitz
608.444.9440
tblitz@cresa.com

Cresa Madison
613 Williamson Street,
Suite 210
Madison, WI 53703

Contact:



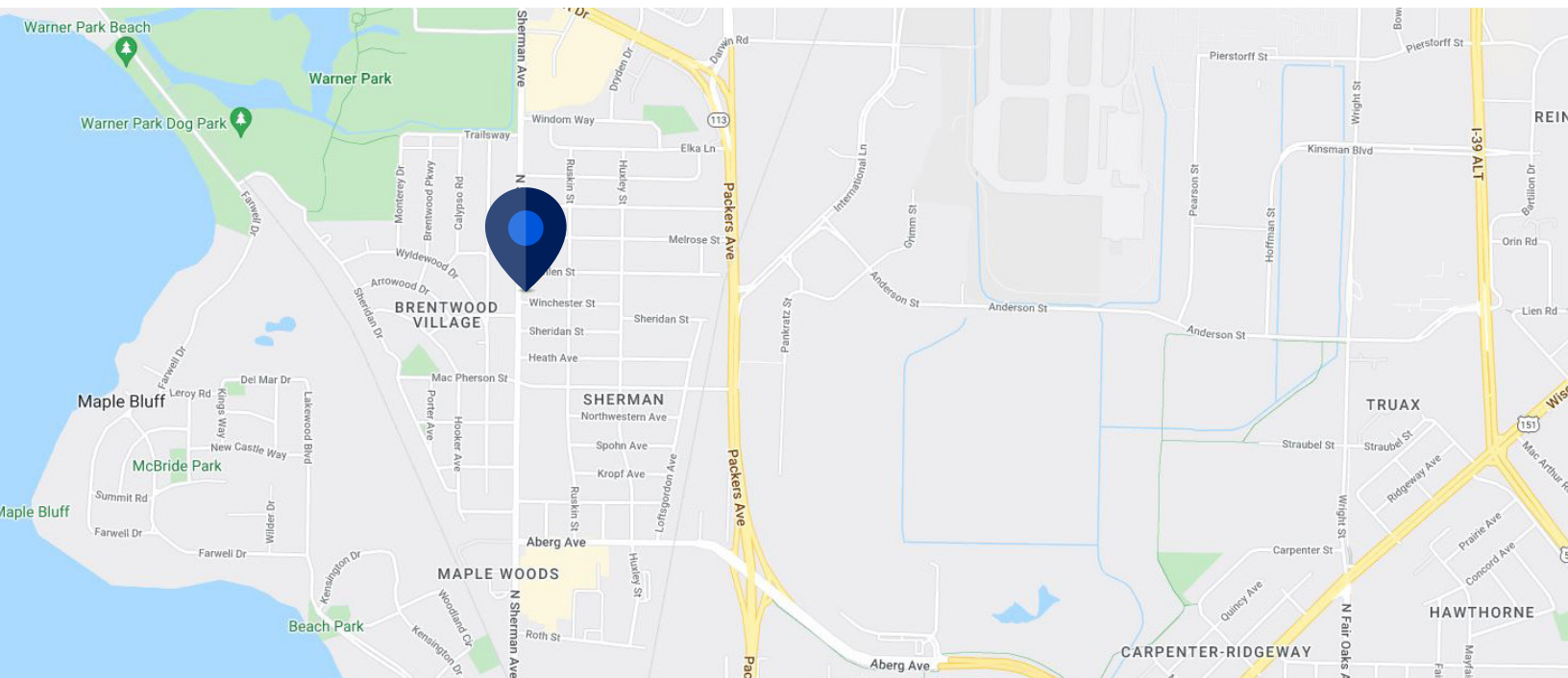
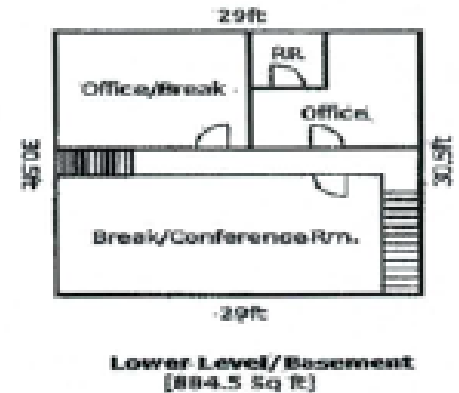
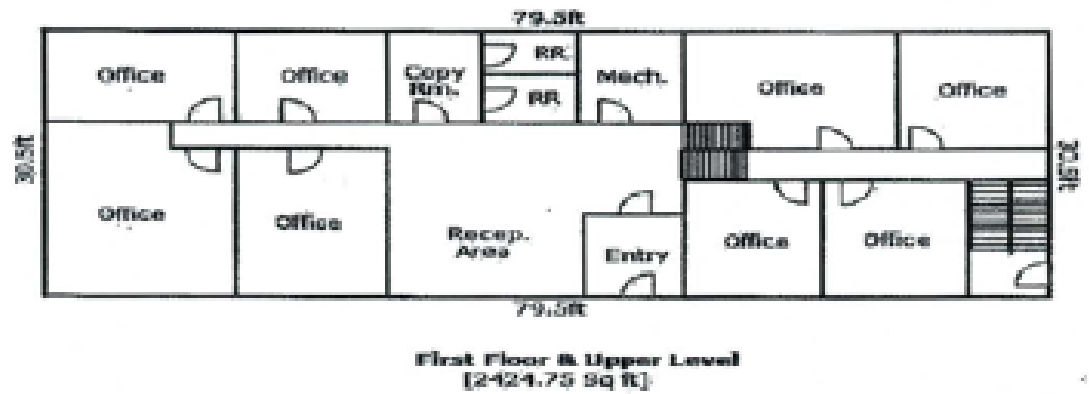
TJ Blitz

608.444.9440

tblitz@cresa.com

Cresa Madison

613 Williamson Street,
Suite 210
Madison, WI 53703



cresa

Cresa © 2019. All rights reserved. The information contained in this document has been obtained from sources believed reliable. While Cresa does not doubt its accuracy, Cresa has not verified it and makes no guarantee, warranty, or representation about it. It is your responsibility to independently confirm its accuracy and completeness. Any projections, opinions, assumptions or estimates used are for example only and do not represent the current or future performance of the property. The value of this transaction to you depends on tax and other factors which should be evaluated by your tax, financial and legal advisors. You and your advisors should conduct a careful, independent investigation of the property to determine to your satisfaction the suitability of the property for your needs.