

# Space For Lease

## 970 N Gammon Rd

Madison, WI



### Building Details

Available Space: 6,028 sf  
Lot Size: .91 acres (39,521 sf)  
Zoning: PD  
Year Built: 1987  
Lease Rate: \$12.00 - \$14.00/sf NNN

### Building Highlights

- > Tenant Improvements and/or free rent negotiable
- > Landlord responsible for roof, structure & HVAC replacement
- > Former La Petite Academy
- > Great corner site with ingress & egress from Gammon Rd & Longmeadow Dr
- > Excellent visibility
- > Large outdoor fenced play area
- > Plenty of parking

**MIKE HERL**

Office: 608.709.5555 x1 Cell: 608.212.4623  
Mike.herl@madisoncommercialre.com

**BRYCE KEINER**

Office: 608.709.5555 x5 Cell: 608.217.6784  
Bryce.keiner@madisoncommercialre.com

Madison Commercial Real Estate LLC, 5609 Medical Circle, Suite 202, Madison WI 53719

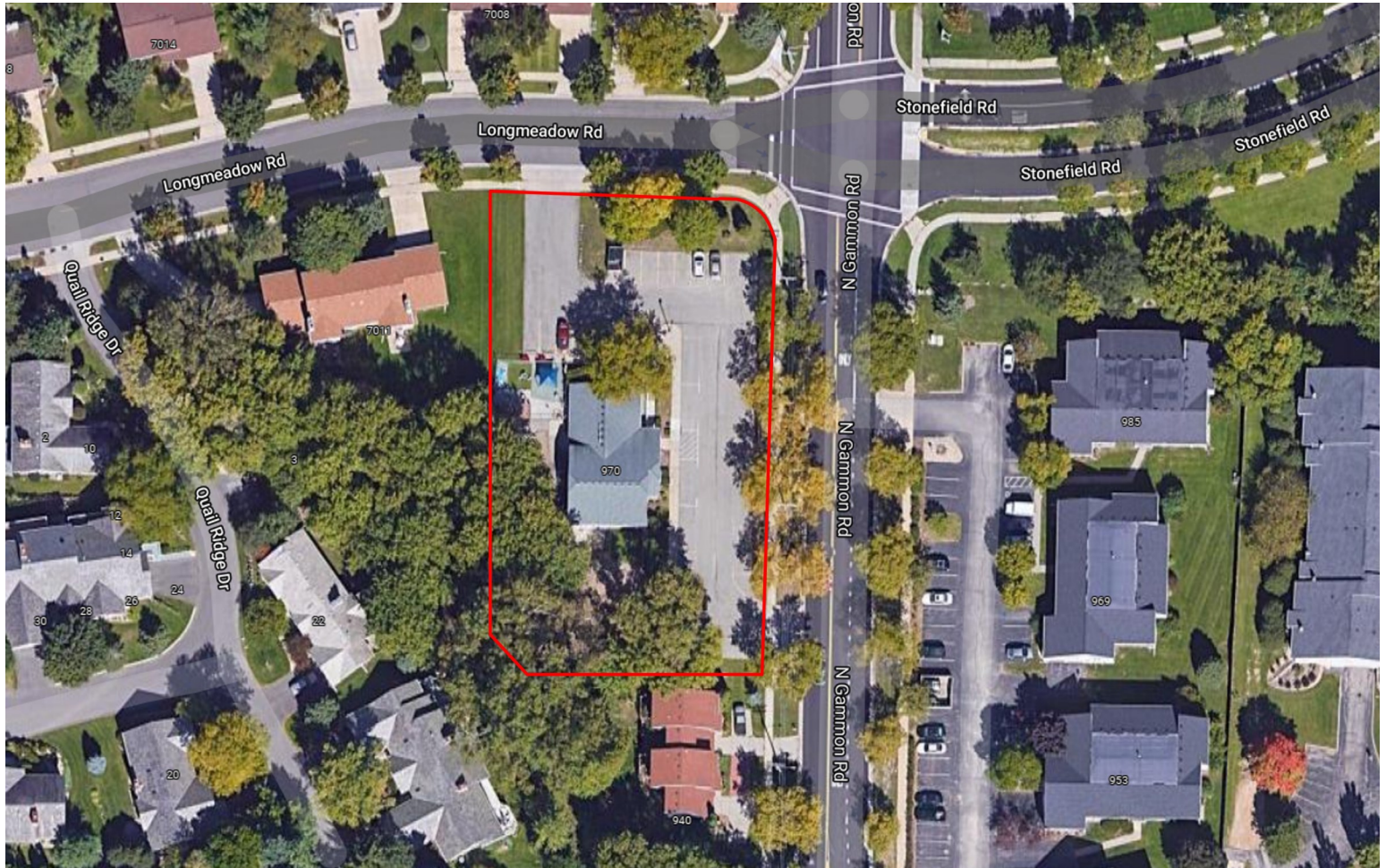


# Space For Lease

## 970 N Gammon Rd

Madison, WI

**M**<sup>ADISON</sup>  
**C**<sup>OMMERCIAL</sup>  
REAL ESTATE LLC



### Virtual Tours

<https://youtu.be/knQdVl38XUQ>

[https://youtu.be/X361T\\_yAWew](https://youtu.be/X361T_yAWew)

[https://youtu.be/T\\_acQqTKiZU](https://youtu.be/T_acQqTKiZU)

<https://youtu.be/7BjDaf7F8Ig>

<https://youtu.be/B26NG7NkXAI>

<https://youtu.be/w0MS3v4Bi6Y>

<https://youtu.be/7BjDaf7F8Ig>

**MIKE HERL**

Office: 608.709.5555 x1 Cell: 608.212.4623

Mike.herl@madisoncommercialre.com

Madison Commercial Real Estate LLC, 5609 Medical Circle, Suite 202, Madison WI 53719

**BRYCE KEINER**

Office: 608.709.5555 x5 Cell: 608.217.6784

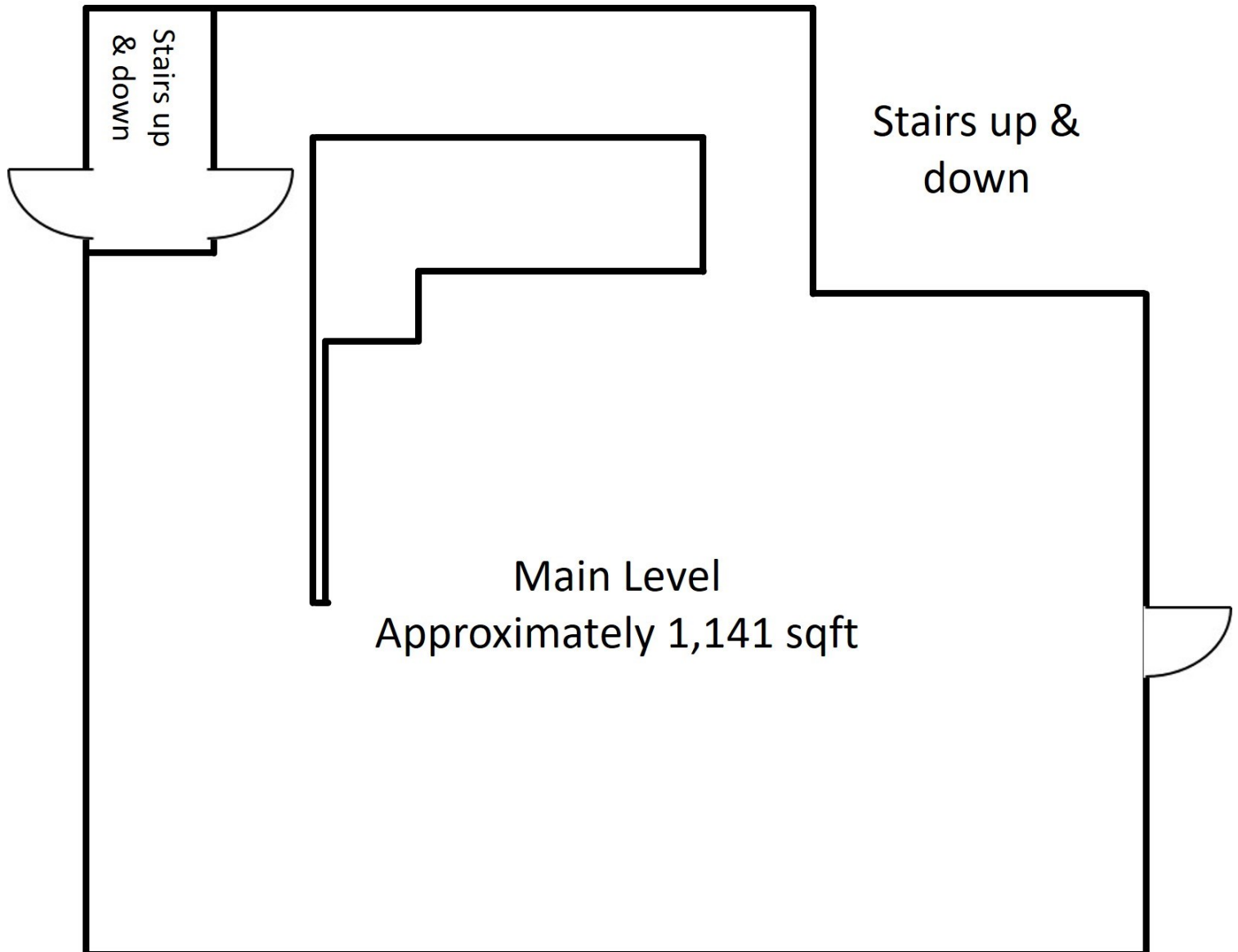
Bryce.keiner@madisoncommercialre.com

# Space For Lease

970 N Gammon Rd

Madison, WI

**M**<sup>ADISON</sup>  
**C**<sup>OMMERCIAL</sup>  
REAL ESTATE LLC



**MIKE HERL**

Office: 608.709.5555 x1 Cell: 608.212.4623

Mike.herl@madisoncommercialre.com

**BRYCE KEINER**

Office: 608.709.5555 x5 Cell: 608.217.6784

Bryce.keiner@madisoncommercialre.com

Madison Commercial Real Estate LLC, 5609 Medical Circle, Suite 202, Madison WI 53719

# Space For Lease

970 N Gammon Rd

Madison, WI



Upper Level  
Approximately 1,400 sqft

Stairs up & down

**MIKE HERL**

Office: 608.709.5555 x1 Cell: 608.212.4623

[Mike.herl@madisoncommercialre.com](mailto:Mike.herl@madisoncommercialre.com)

Madison Commercial Real Estate LLC, 5609 Medical Circle, Suite 202, Madison WI 53719

**BRYCE KEINER**

Office: 608.709.5555 x5 Cell: 608.217.6784

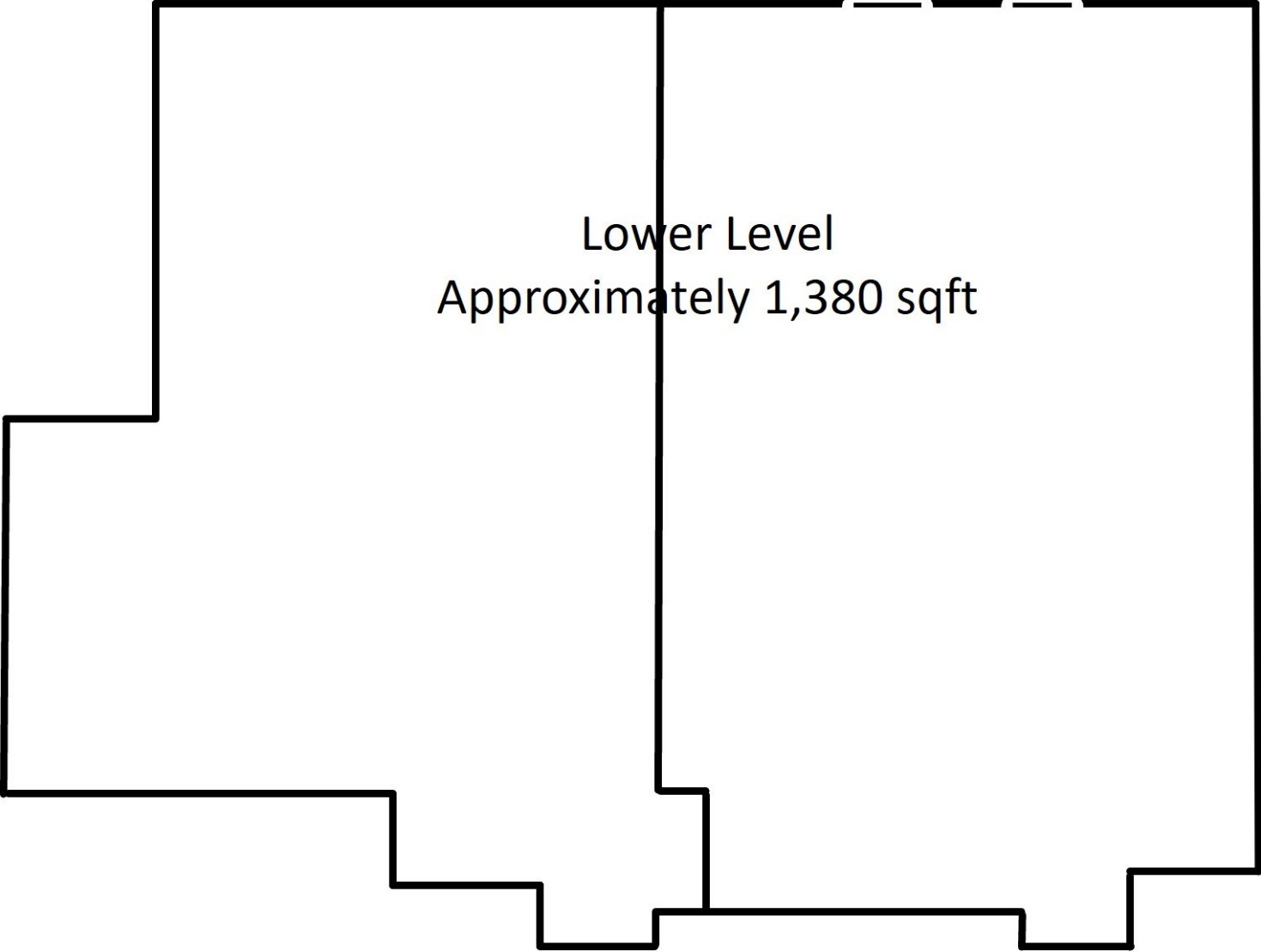
[Bryce.keiner@madisoncommercialre.com](mailto:Bryce.keiner@madisoncommercialre.com)

# Space For Lease

970 N Gammon Rd

Madison, WI

**M**<sup>ADISON</sup>  
**C**<sup>OMMERCIAL</sup>  
REAL ESTATE LLC



Lower Level  
Approximately 1,380 sqft

The diagram shows a floor plan for the lower level of a building. It is an irregular polygon with several steps and indentations. The overall shape is roughly rectangular, but with a large section on the left side that is narrower and has a stepped profile. The right side is a straight vertical line. The bottom edge has several small rectangular protrusions and indentations, creating a complex, stepped appearance. The text 'Lower Level' and 'Approximately 1,380 sqft' is centered within the main body of the plan.

**MIKE HERL**

Office: 608.709.5555 x1 Cell: 608.212.4623

Mike.herb@madisoncommercialre.com

Madison Commercial Real Estate LLC, 5609 Medical Circle, Suite 202, Madison WI 53719

**BRYCE KEINER**

Office: 608.709.5555 x5 Cell: 608.217.6784

Bryce.keiner@madisoncommercialre.com





**MIKE HERL**

Office: 608.709.5555 x1 Cell: 608.212.4623

Mike.herl@madisoncommercialre.com

Madison Commercial Real Estate LLC, 5609 Medical Circle, Suite 202, Madison WI 53719

**BRYCE KEINER**

Office: 608.709.5555 x5 Cell: 608.217.6784

Bryce.keiner@madisoncommercialre.com

Madison Commercial Real Estate LLC, 5609 Medical Circle, Suite 202, Madison WI 53719

## BROKER DISCLOSURE TO NON-RESIDENTIAL CUSTOMERS

1 Prior to negotiating on your behalf the Broker must provide you the following disclosure statement:

### BROKER DISCLOSURE TO CUSTOMERS

3 You are a customer of the broker. The broker is either an agent of another party in the transaction or a subagent of another broker who is the agent of another party in the transaction. The broker, or a salesperson acting on behalf of the broker, may provide brokerage services to you. Whenever the broker is providing brokerage services to you, the broker owes you, the customer, the following duties:

- 7 ■ The duty to provide brokerage services to you fairly and honestly.
- 8 ■ The duty to exercise reasonable skill and care in providing brokerage services to you.
- 9 ■ The duty to provide you with accurate information about market conditions with a reasonable time if you request it, unless disclosure of the information is prohibited by law.
- 11 ■ The duty to disclose to you in writing certain material adverse facts about a property, unless disclosure of the information is prohibited by law (See Lines 47-55).
- 13 ■ The duty to protect your confidentiality. Unless the law requires it, the broker will not disclose your confidential information or the confidential information of other parties (See Lines 22-39).
- 15 ■ The duty to safeguard trust funds and other property the broker holds.
- 16 ■ The duty, when negotiating, to present contract proposals in an objective and unbiased manner and disclose the advantages and disadvantages of the proposals.

18 Please review this information carefully. A broker or salesperson can answer your questions about brokerage services, but if you need legal advice, tax advice, or a professional home inspection, contact an attorney, tax advisor, or home inspector. This disclosure is required by section 452.135 of the Wisconsin statutes and is for information only. It is a plain-language summary of A broker's duties to a customer under section 452.133 (1) of the Wisconsin statutes.

### CONFIDENTIALITY NOTICE TO CUSTOMERS

23 BROKER WILL KEEP CONFIDENTIAL ANY INFORMATION GIVEN TO BROKER IN CONFIDENCE, OR ANY INFORMATION OBTAINED BY BROKER THAT HE OR SHE KNOWS A REASONABLE PERSON WOULD WANT TO BE KEPT CONFIDENTIAL, UNLESS THE INFORMATION MUST BE DISCLOSED BY LAW OR YOU AUTHORIZE THE BROKER TO DISCLOSE PARTICULAR INFORMATION. A BROKER SHALL CONTINUE TO KEEP THE INFORMATION CONFIDENTIAL AFTER BROKER IS NO LONGER PROVIDING BROKERAGE SERVICES TO YOU.

28 THE FOLLOWING INFORMATION IS REQUIRED TO BE DISCLOSED BY LAW:

- 29 1. MATERIAL ADVERSE FACTS, AS DEFINED IN SECTION 452.01 (5g) OF THE WISCONSIN STATUTES (SEE LINES 47-55).
- 30 2. ANY FACTS KNOWN BY THE BROKER THAT CONTRADICT ANY INFORMATION INCLUDED IN A WRITTEN INSPECTION REPORT ON THE PROPERTY OR REAL ESTATE THAT IS THE SUBJECT OF THE TRANSACTION.

32 TO ENSURE THAT THE BROKER IS AWARE OF WHAT SPECIFIC INFORMATION YOU CONSIDER CONFIDENTIAL, YOU MAY LIST THAT INFORMATION BELOW (SEE LINES 35-36). AT A LATER TIME, YOU MAY ALSO PROVIDE THE BROKER WITH OTHER INFORMATION YOU CONSIDER TO BE CONFIDENTIAL.

35 **CONFIDENTIAL INFORMATION:** \_\_\_\_\_

37 **NON-CONFIDENTIAL INFORMATION** (The following information may be disclosed by Broker): \_\_\_\_\_

39 (INSERT INFORMATION YOU AUTHORIZE THE BROKER TO DISCLOSE SUCH AS FINANCIAL QUALIFICATION INFORMATION.)

### CONSENT TO TELEPHONE SOLICITATION

41 I/We agree that the Broker and any affiliated settlement service providers (for example, a mortgage company or title company) may call our/my home or cell phone numbers regarding issues, goods and services related to the real estate transaction until I/we withdraw this consent in writing. **List Home/Cell Numbers:** \_\_\_\_\_

### SEX OFFENDER REGISTRY

45 Notice: You may obtain information about the sex offender registry and persons registered with the registry by contacting the Wisconsin Department of Corrections on the Internet at <http://offender.doc.state.wi.us/public/> or by phone at 608-240-5830.

### DEFINITION OF MATERIAL ADVERSE FACTS

48 A "material adverse fact" is defined in Wis. Stat. § 452.01 (5g) as an adverse fact that a party indicates is of such significance, or that is generally recognized by a competent licensee as being of such significance to a reasonable party, that it affects or would affect the party's decision to enter into a contract or agreement concerning a transaction or affects or would affect the party's decision about the terms of such a contract or agreement. An "adverse fact" is defined in Wis. Stat. § 452.01 (1e) as a condition or occurrence that a competent licensee generally recognizes will significantly and adversely affect the value of the property, significantly reduce the structural integrity of improvements to real estate, or present a significant health risk to occupants of the property; or information that indicates that a party to a transaction is not able to or does not intend to meet his or her obligations under a contract or agreement made concerning the transaction.