

ATWOOD INVESTMENT PROPERTY FOR SALE

Rare opportunity to
own an established
piece of the Atwood
Neighborhood.

Listed at: \$2,200,000



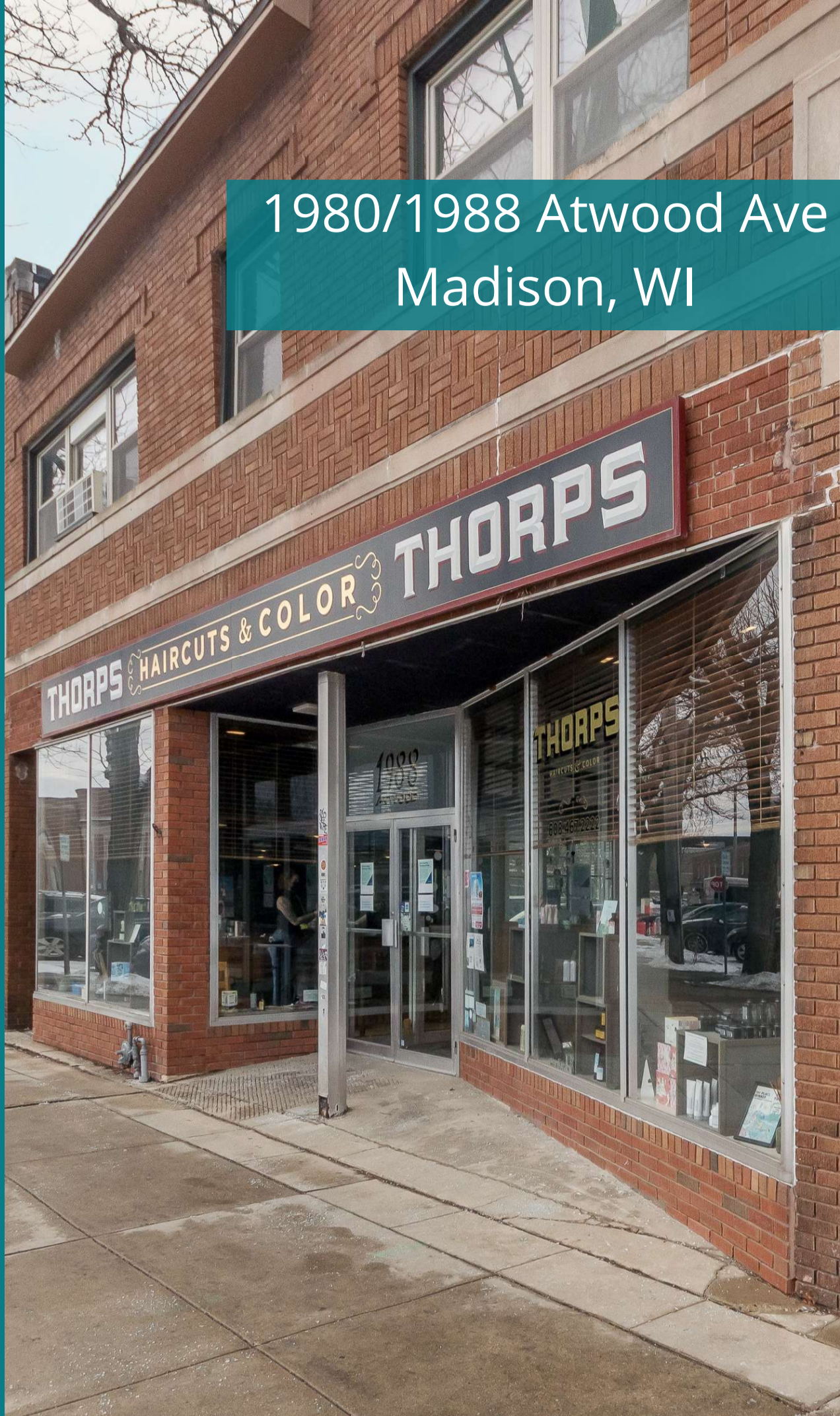
FIRSTWEBER
Commercial

The human side of real estate.™

Contact Kyle Humphrey:
608-843-4017

kyle@humphreypropertygroup.com

1980/1988 Atwood Ave
Madison, WI



Two commercial units
Five Residential Units

- Long term established tenants
- No vacancies
- Great long term appreciation
- Highly desirable neighborhood



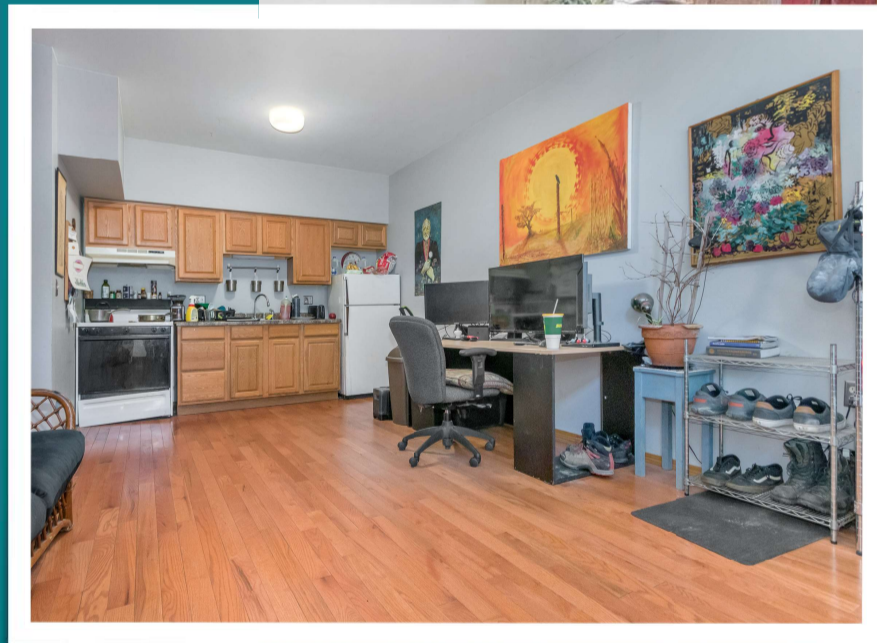
Contact Kyle Humphrey:
608-843-4017
kyle@humphreypropertygroup.com



FIRSTWEBER
Commercial

The human side of real estate.™

-A mix of
retail/restaurant
space and
residential units.
Great diversified
building.



Contact Kyle Humphrey:

608-843-4017

kyle@humphreypropertygroup.com