

# Office / Flex Space For Lease

## 8505 University Green

Middleton, WI 53562



### Building Details

- > Building Size: 15,375 sqft
- > Lot Size: 1.38 acres
- > Year Built: 1988
- > Zoning: I - Industrial
- > Parking: Surface Space

### Property Highlights

- > Highway 14 frontage, great visibility
- > Easy access to and from Highway 14 and the Beltline Highway
- > Flexible floor plan, small suites available
- > Plenty of parking
- > Monument signage available

MIKE HERL

Office: 608.709.5555 x1    Cell: 608.212.4623

Mike.herl@madisoncommercialre.com

Madison Commercial Real Estate LLC, 5609 Medical Circle, Suite 202, Madison WI 53719

# Office / Flex Space For Lease

## 8505 University Green

Middleton, WI 53562



### 1st Floor & Mezzanine Information

- > Mix of office and warehouse space  
Office  $\pm$ 1,666 sqft Warehouse  $\pm$  2,614 sqft
- > Mezzanine space  $\pm$ 1,988 sqft
- > One loading dock, two drive-in doors
- > Private entrance, showroom area, small kitchenette, reception area

### Availability & Lease Rate

|           |                             |
|-----------|-----------------------------|
| Suite 124 | $\pm$ 4,280 sqft            |
| Available | Immediately                 |
| Asking    | \$9.00/sqft MG blended rate |

### 2nd Floor Suite Information

- > Two small individual suites available
- > Shared locked entry, restrooms and kitchen area
- > Office furniture may be available

### Availability & Lease Rate

|           |                    |
|-----------|--------------------|
| Suite 201 | $\pm$ 190 sqft     |
| Suite 203 | $\pm$ 300 sqft     |
| Asking    | \$12.00/sqft Gross |

MIKE HERL

Office: 608.709.5555 x1 Cell: 608.212.4623  
Mike.herl@madisoncommercialre.com

Madison Commercial Real Estate LLC, 5609 Medical Circle, Suite 202, Madison WI 53719



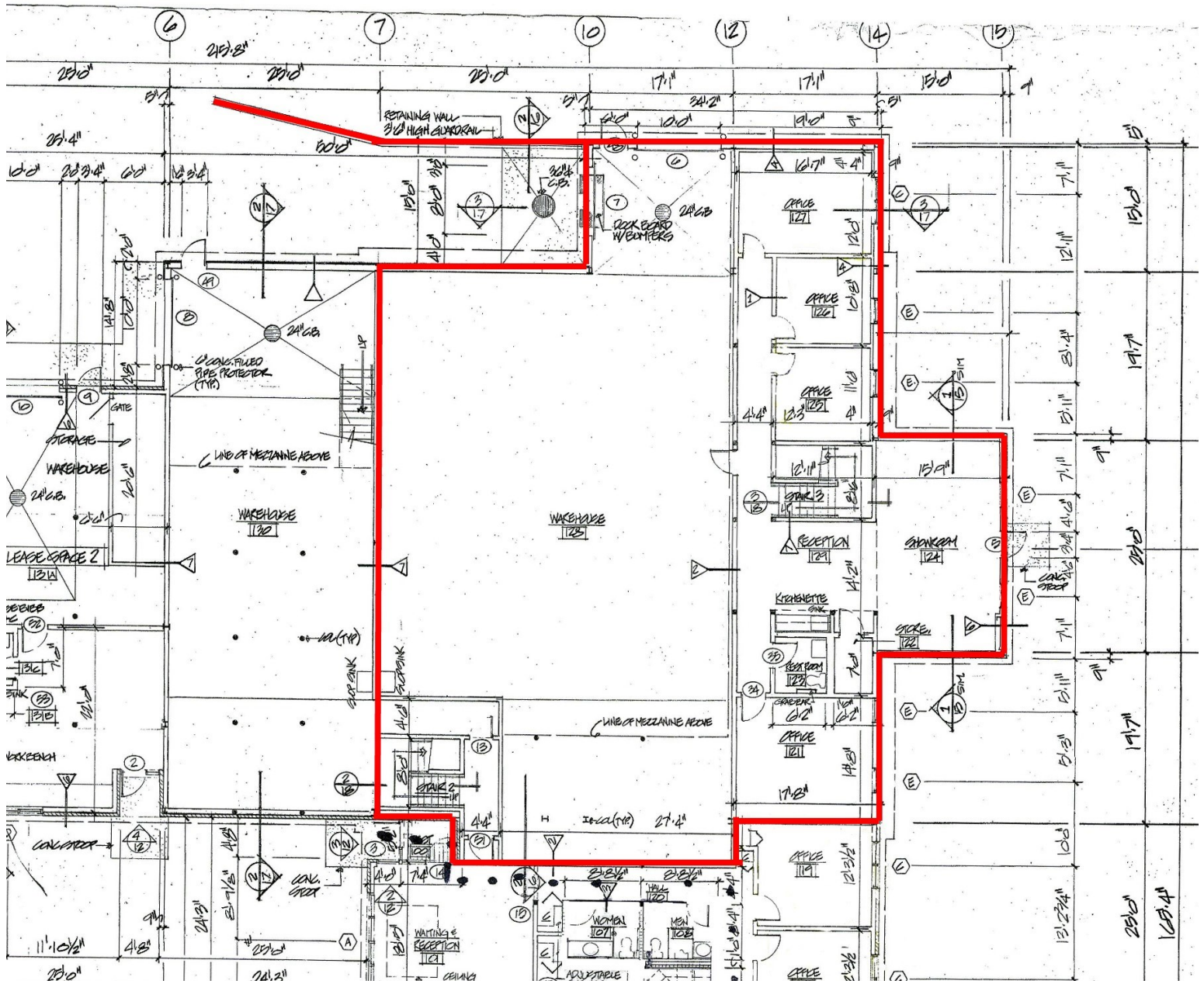
# Office / Flex Space For Lease

## 8505 University Green

Middleton, WI 53562

**MADISON**  
**COMMERCIAL**  
REAL ESTATE LLC

### Suite 121-130 Floor Plan Approximately $\pm 4,280$ sqft



MIKE HERL

Office: 608.709.5555 x1    Cell: 608.212.4623

Mike.herb@madisoncommercialre.com

Madison Commercial Real Estate LLC, 5609 Medical Circle, Suite 202, Madison WI 53719

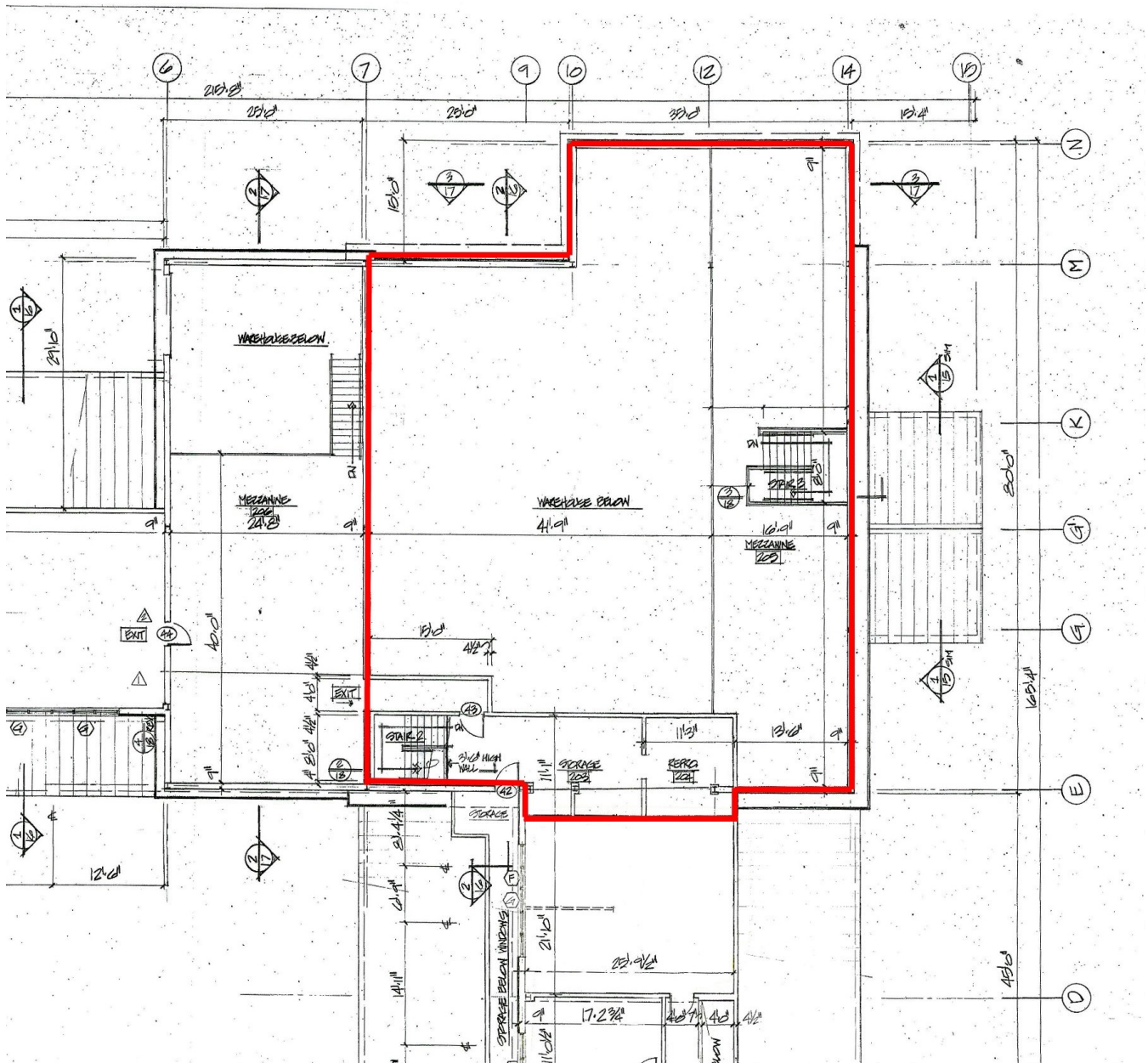
# Office / Flex Space For Lease

## 8505 University Green

Middleton, WI 53562

**M**<sup>MADISON</sup>  
**C**<sup>COMMERCIAL</sup>  
REAL ESTATE LLC

### Mezzanine Floor Plan Approximately ±1,998 sqft



MIKE HERL

Office: 608.709.5555 x1    Cell: 608.212.4623

Mike.herl@madisoncommercialre.com

Madison Commercial Real Estate LLC, 5609 Medical Circle, Suite 202, Madison WI 53719



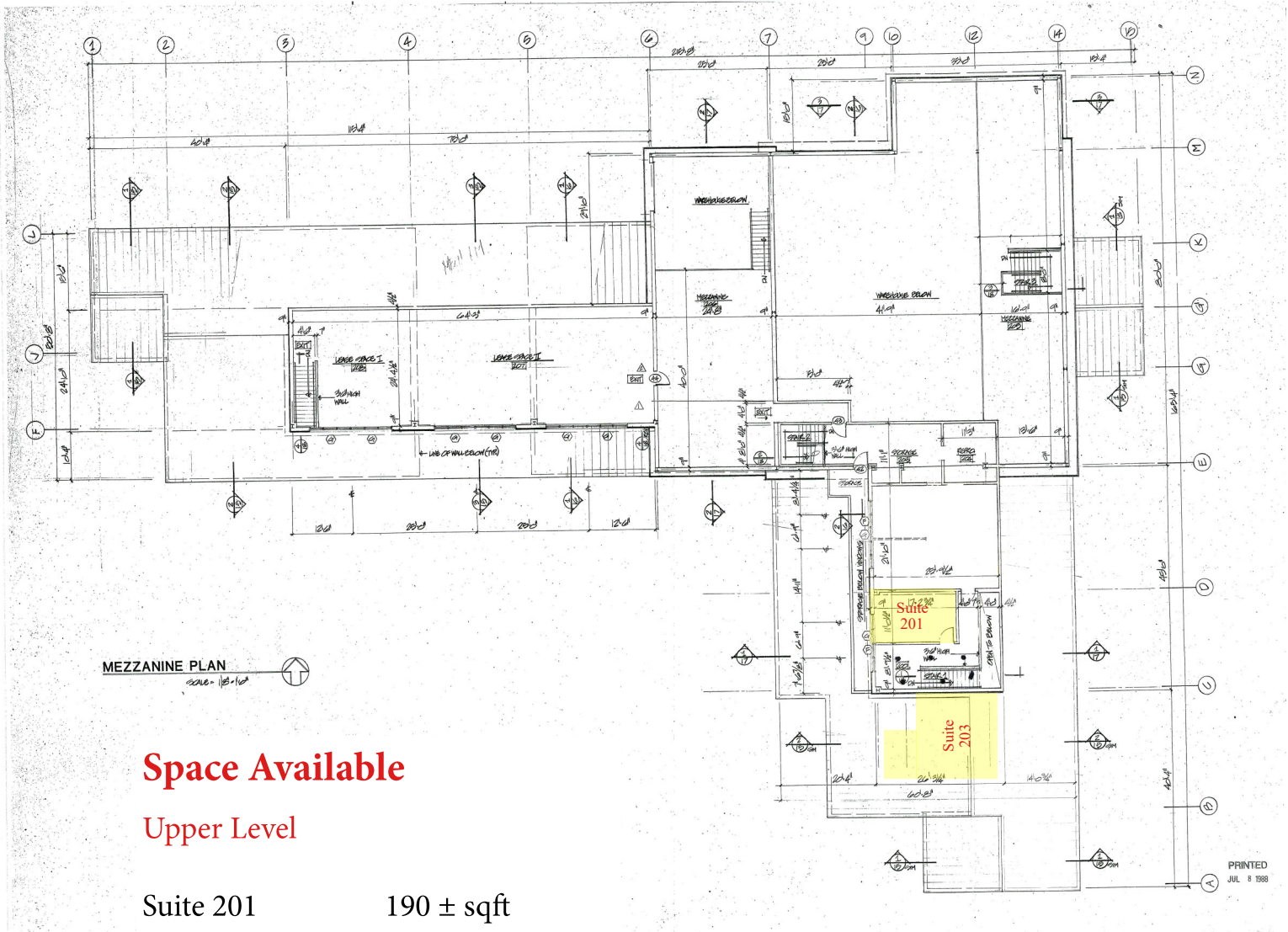
# Office / Flex Space For Lease

## 8505 University Green

Middleton, WI 53562

**MADISON**  
**COMMERCIAL**  
REAL ESTATE LLC

## 2nd Floor Suites



### Space Available

#### Upper Level

Suite 201      190 ± sqft

Suite 203      300 ± sqft

**Lease Rate**      \$12.00/sqft Gross

MIKE HERL

Office: 608.709.5555 x1      Cell: 608.212.4623

Mike.herb@madisoncommercialre.com

Madison Commercial Real Estate LLC, 5609 Medical Circle, Suite 202, Madison WI 53719

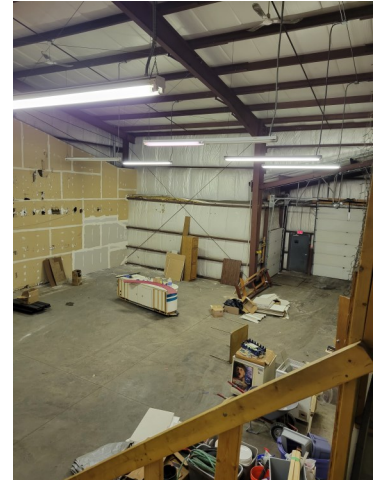
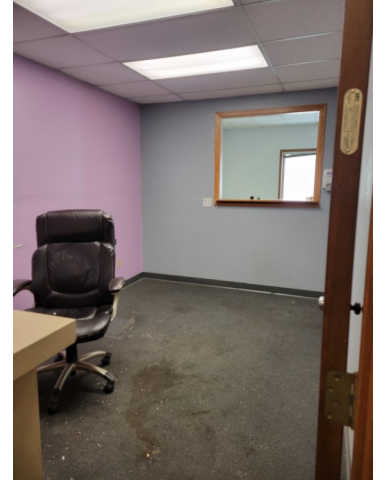


# Office / Flex Space For Lease

## 8505 University Green

Middleton, WI 53562

**M**<sup>MADISON</sup>  
**C**<sup>COMMERCIAL</sup>  
REAL ESTATE LLC



MIKE HERL

Office: 608.709.5555 x1    Cell: 608.212.4623

Mike.herb@madisoncommercialre.com

Madison Commercial Real Estate LLC, 5609 Medical Circle, Suite 202, Madison WI 53719

## BROKER DISCLOSURE TO NON-RESIDENTIAL CUSTOMERS

1 Prior to negotiating on your behalf the Broker must provide you the following disclosure statement:

### BROKER DISCLOSURE TO CUSTOMERS

3 You are a customer of the broker. The broker is either an agent of another party in the transaction or a subagent of another broker who is the agent of another party in the transaction. The broker, or a salesperson acting on behalf of the broker, may provide brokerage services to you. Whenever the broker is providing brokerage services to you, the broker owes you, the customer, the following duties:

- 7 ■ The duty to provide brokerage services to you fairly and honestly.
- 8 ■ The duty to exercise reasonable skill and care in providing brokerage services to you.
- 9 ■ The duty to provide you with accurate information about market conditions with a reasonable time if you request it, unless disclosure of the information is prohibited by law.
- 11 ■ The duty to disclose to you in writing certain material adverse facts about a property, unless disclosure of the information is prohibited by law (See Lines 47-55).
- 13 ■ The duty to protect your confidentiality. Unless the law requires it, the broker will not disclose your confidential information or the confidential information of other parties (See Lines 22-39).
- 15 ■ The duty to safeguard trust funds and other property the broker holds.
- 16 ■ The duty, when negotiating, to present contract proposals in an objective and unbiased manner and disclose the advantages and disadvantages of the proposals.

18 Please review this information carefully. A broker or salesperson can answer your questions about brokerage services, but if you need legal advice, tax advice, or a professional home inspection, contact an attorney, tax advisor, or home inspector. This disclosure is required by section 452.135 of the Wisconsin statutes and is for information only. It is a plain-language summary of A broker's duties to a customer under section 452.133 (1) of the Wisconsin statutes.

### CONFIDENTIALITY NOTICE TO CUSTOMERS

23 BROKER WILL KEEP CONFIDENTIAL ANY INFORMATION GIVEN TO BROKER IN CONFIDENCE, OR ANY INFORMATION OBTAINED BY BROKER THAT HE OR SHE KNOWS A REASONABLE PERSON WOULD WANT TO BE KEPT CONFIDENTIAL, UNLESS THE INFORMATION MUST BE DISCLOSED BY LAW OR YOU AUTHORIZE THE BROKER TO DISCLOSE PARTICULAR INFORMATION. A BROKER SHALL CONTINUE TO KEEP THE INFORMATION CONFIDENTIAL AFTER BROKER IS NO LONGER PROVIDING BROKERAGE SERVICES TO YOU.

28 THE FOLLOWING INFORMATION IS REQUIRED TO BE DISCLOSED BY LAW:

- 29 1. MATERIAL ADVERSE FACTS, AS DEFINED IN SECTION 452.01 (5g) OF THE WISCONSIN STATUTES (SEE LINES 47-55).
- 30 2. ANY FACTS KNOWN BY THE BROKER THAT CONTRADICT ANY INFORMATION INCLUDED IN A WRITTEN INSPECTION REPORT ON THE PROPERTY OR REAL ESTATE THAT IS THE SUBJECT OF THE TRANSACTION.

32 TO ENSURE THAT THE BROKER IS AWARE OF WHAT SPECIFIC INFORMATION YOU CONSIDER CONFIDENTIAL, YOU MAY LIST THAT INFORMATION BELOW (SEE LINES 35-36). AT A LATER TIME, YOU MAY ALSO PROVIDE THE BROKER WITH OTHER INFORMATION YOU CONSIDER TO BE CONFIDENTIAL.

35 **CONFIDENTIAL INFORMATION:** \_\_\_\_\_

37 **NON-CONFIDENTIAL INFORMATION** (The following information may be disclosed by Broker): \_\_\_\_\_

39 (INSERT INFORMATION YOU AUTHORIZE THE BROKER TO DISCLOSE SUCH AS FINANCIAL QUALIFICATION INFORMATION.)

### CONSENT TO TELEPHONE SOLICITATION

41 I/We agree that the Broker and any affiliated settlement service providers (for example, a mortgage company or title company) may call our/my home or cell phone numbers regarding issues, goods and services related to the real estate transaction until I/we withdraw this consent in writing. **List Home/Cell Numbers:** \_\_\_\_\_

### SEX OFFENDER REGISTRY

45 Notice: You may obtain information about the sex offender registry and persons registered with the registry by contacting the Wisconsin Department of Corrections on the Internet at <http://offender.doc.state.wi.us/public/> or by phone at 608-240-5830.

### DEFINITION OF MATERIAL ADVERSE FACTS

48 A "material adverse fact" is defined in Wis. Stat. § 452.01 (5g) as an adverse fact that a party indicates is of such significance, or that is generally recognized by a competent licensee as being of such significance to a reasonable party, that it affects or would affect the party's decision to enter into a contract or agreement concerning a transaction or affects or would affect the party's decision about the terms of such a contract or agreement. An "adverse fact" is defined in Wis. Stat. § 452.01 (1e) as a condition or occurrence that a competent licensee generally recognizes will significantly and adversely affect the value of the property, significantly reduce the structural integrity of improvements to real estate, or present a significant health risk to occupants of the property; or information that indicates that a party to a transaction is not able to or does not intend to meet his or her obligations under a contract or agreement made concerning the transaction.