

# SUITE 300

634 W MAIN ST. MADISON, WI 53703

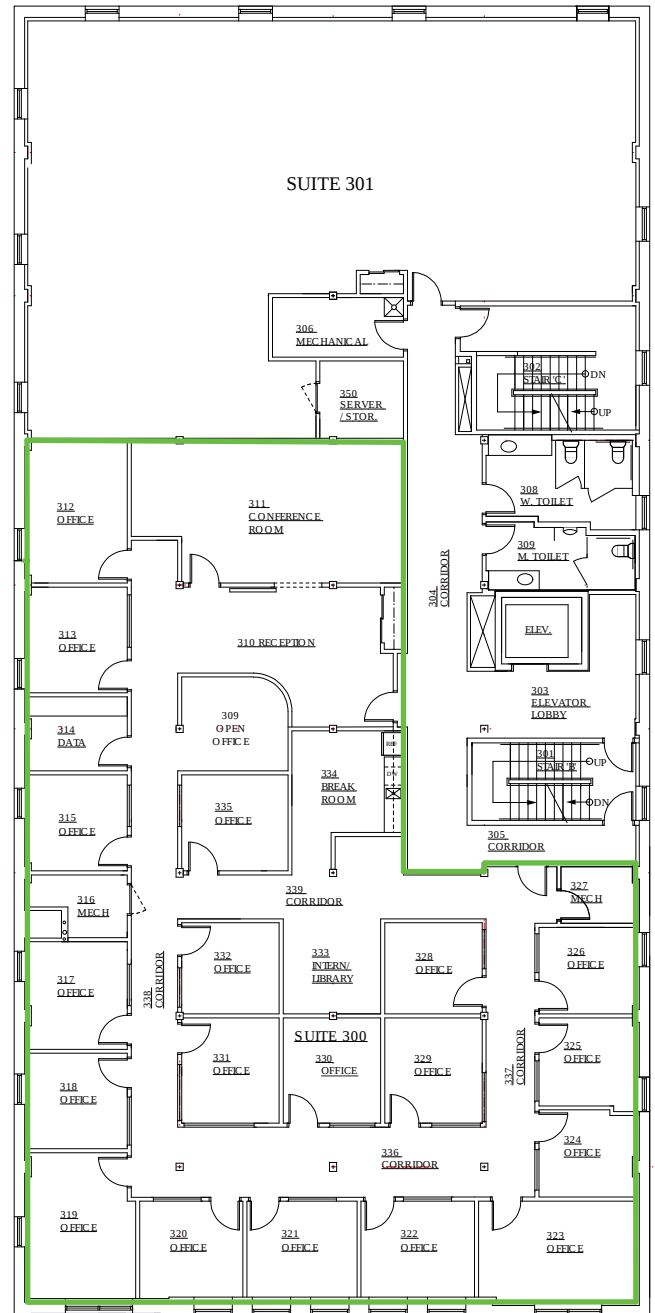
## PROPERTY FEATURES

**SIZE: 5,115 SQFT**

**TYPE: OFFICE SPACE**

**AVAILABLE: MAY 2022**

- RENOVATED HISTORIC WAREHOUSE
- 19 PRIVATE OFFICES, 1 LARGE CONFERENCE ROOM
- OPEN WORK AREA, RECEPTION, AND BREAK AREA
- EXPOSED BRICK, WOOD BEAMS & ABUNDANT NATURAL LIGHTING
- ENERGY EFFICIENT LIGHT FIXTURES
- HIGH EFFICIENCY HVAC & MERV13 AIR FILTERS
- SHOWER FACILITIES
- ADA ACCESSIBLE
- IMMEDIATE SOUTHWEST BIKE PATH ACCESS
- AMPLE SURFACE PARKING - 176 STALLS
- OPERABLE WINDOWS
- ON-SITE MANAGEMENT WITH 32+ YEARS EXPERIENCE



## 634 W MAIN ST - SUITE 300 EXISTING FLOORPLAN



NORTH

0 8' 16' 32'



JUDY: (608)279-8882  
ANDY: (608)279-8883



JUDY: JUDY@DELTA-PROPERTIES.COM  
ANDY: ANDY@DELTA-PROPERTIES.COM



WWW.DELTA-PROPEPRTIES.COM

# SUITE 300

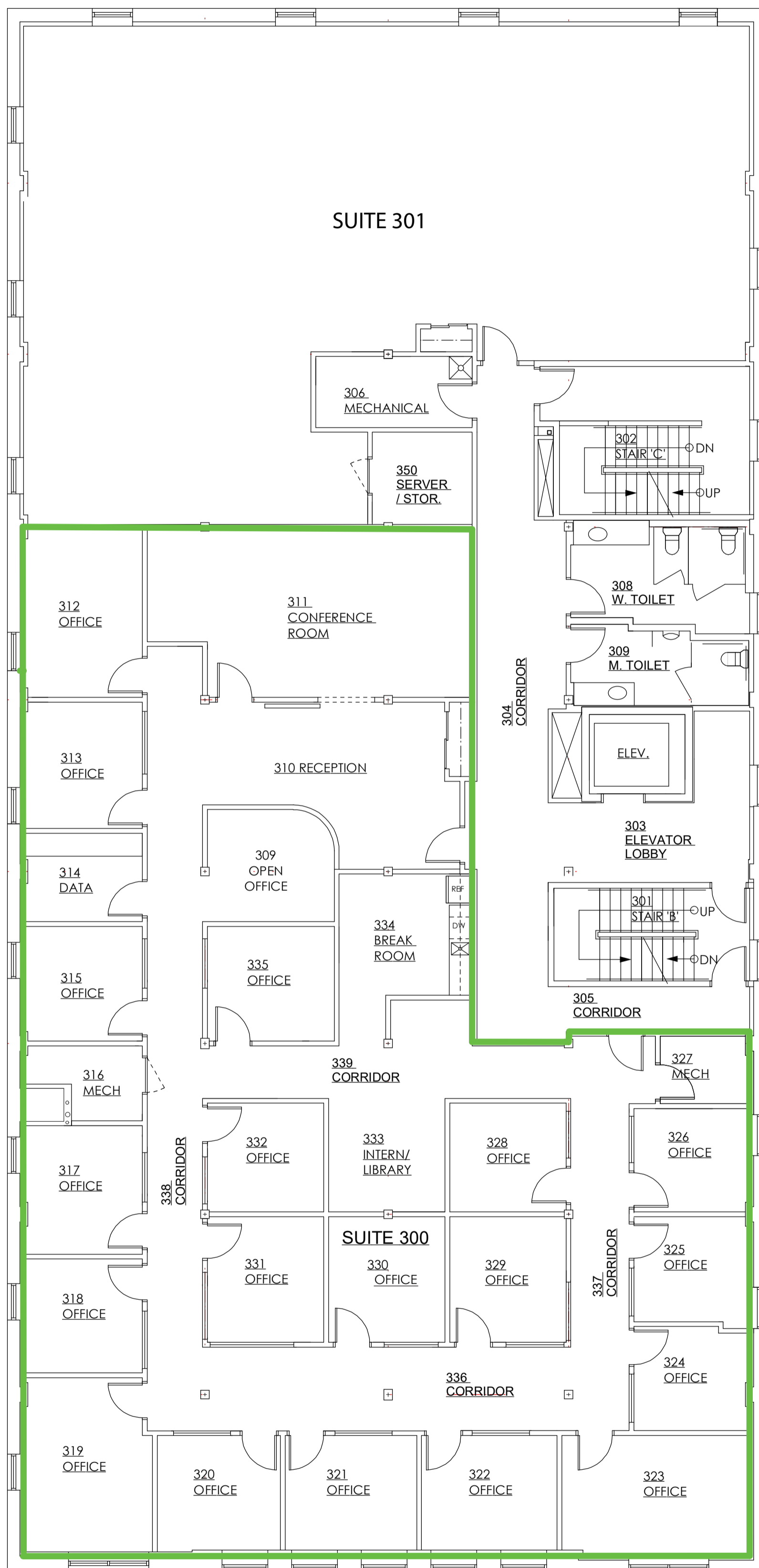
634 W MAIN ST. MADISON, WI 53703



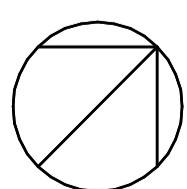
JUDY: (608)279-8882  
ANDY: (608)279-8883

JUDY: JUDY@DELTA-PROPERTIES.COM  
ANDY: ANDY@DELTA-PROPERTIES.COM

 [WWW.DELTA-PROPEPTIES.COM](http://WWW.DELTA-PROPEPTIES.COM)

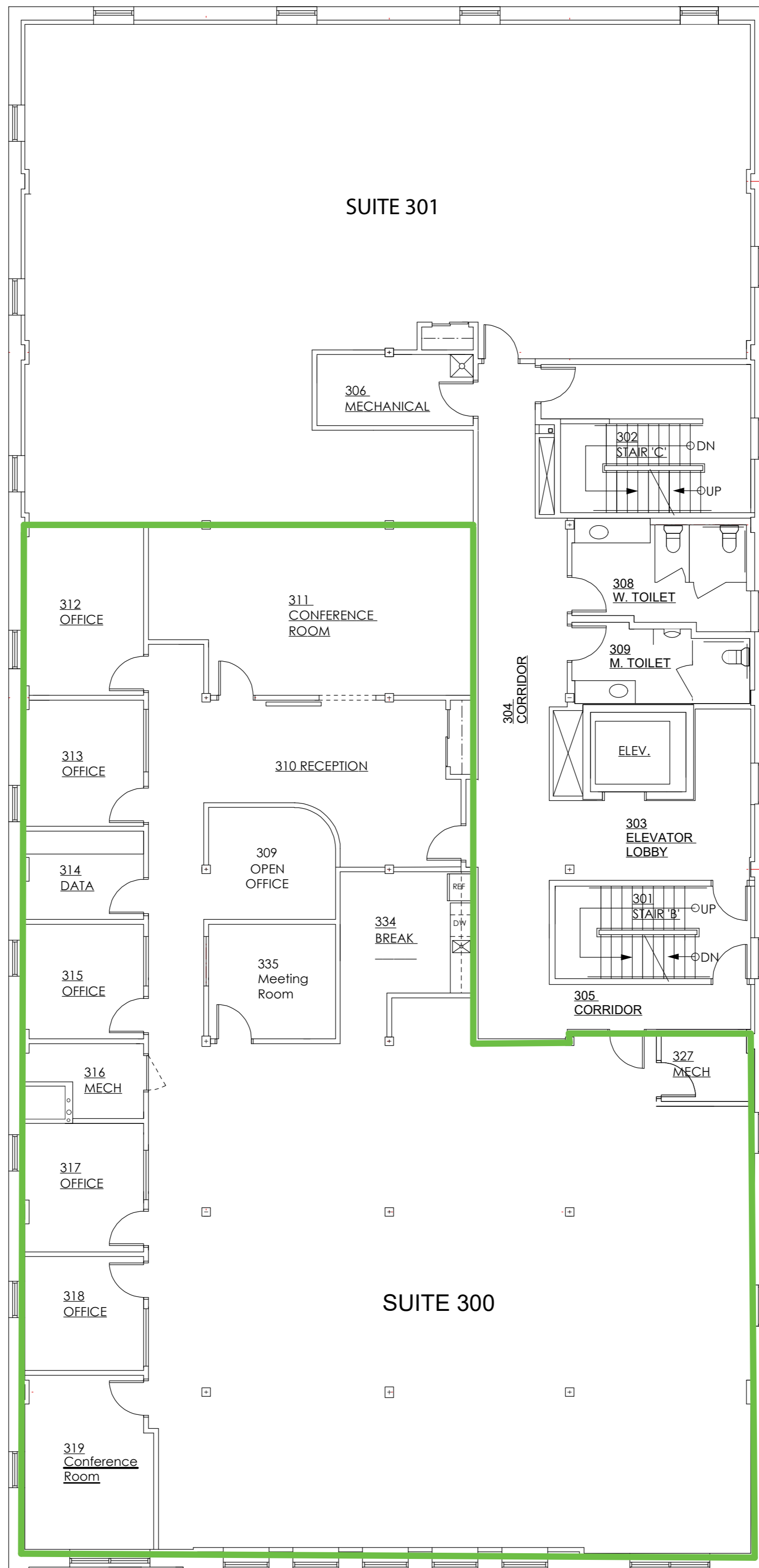


# 634 W MAIN ST - SUITE 300 EXISTING FLOORPLAN



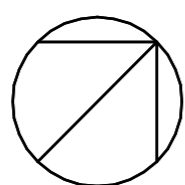
NORTH

0 8' 16' 32'



# 634 W MAIN ST - SUITE 300

## CONCEPTUAL FLOOR PLAN



NORTH

0 8' 16' 32'