

## Built-Out Restaurant Space Available at Garver Feed Mill



For leasing info contact:  
Bryant Moroder, 608.577.1150  
[bryant@baumrevision.com](mailto:bryant@baumrevision.com)

**GARVER** | **FEED MILL**  
*Madison, Wisconsin*



## Built-Out Restaurant Space



For leasing info contact:  
Bryant Moroder, 608.577.1150  
[bryant@baumrevision.com](mailto:bryant@baumrevision.com)

**GARVER** | 711M 033  
*Madison, Wisconsin*





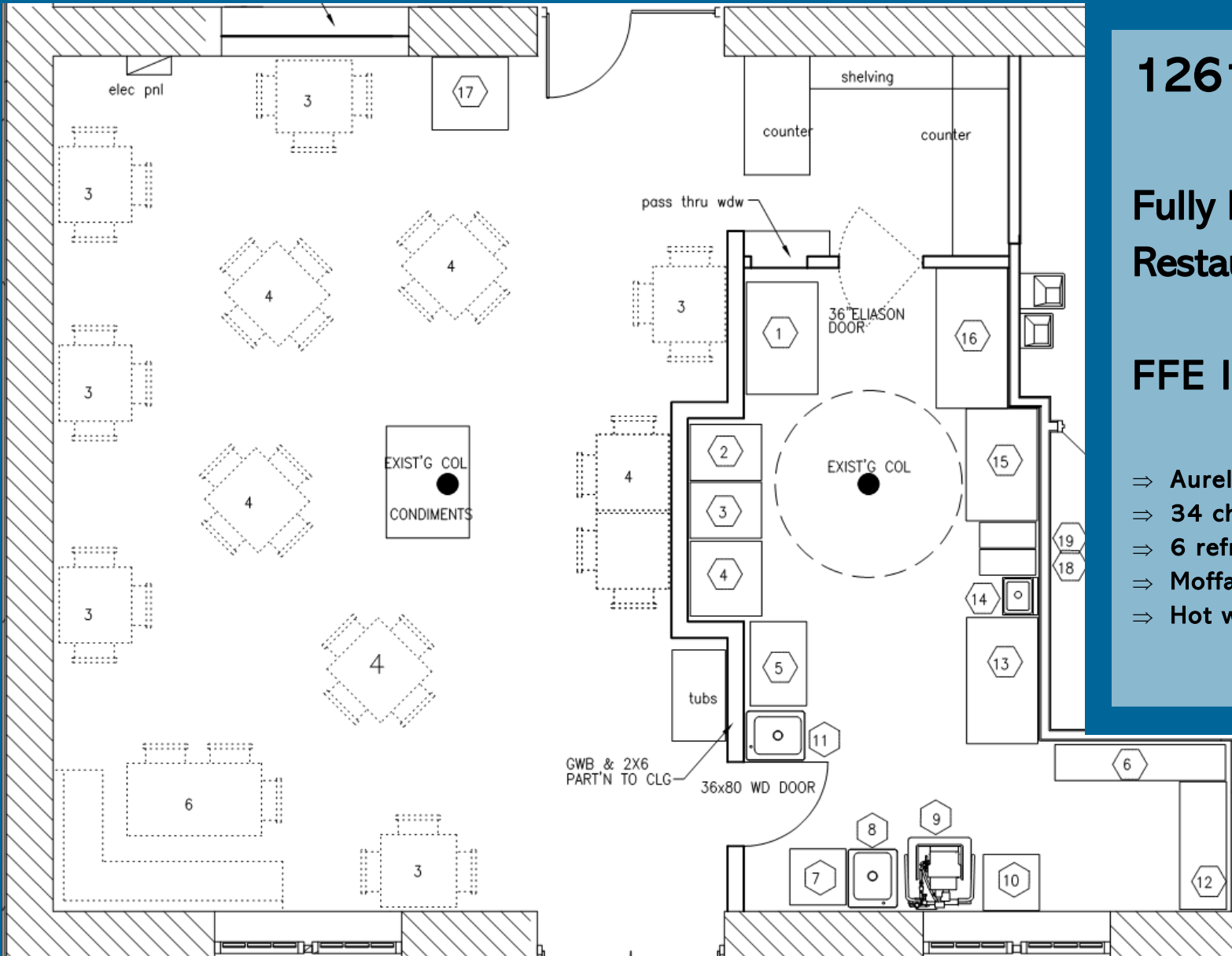
### Property Highlights

- ⇒ 1261 SF available in historic, award-winning building
- ⇒ Recent 2019 build-out with extensive FFE and like-new HVAC included
- ⇒ Abundant natural light in dining area and kitchen
- ⇒ Steps away from two large outdoor patios
- ⇒ Adjacent to Capital City Bike Trail and Olbrich Gardens
- ⇒ Building hosts Dane Late Winter Farmers Market and many other large-scale events throughout the year
- ⇒ On-site spa, yoga-studio, B-cycle station and gallery

For leasing info contact:

Bryant Moroder, 608.577.1150  
[bryant@baumrevision.com](mailto:bryant@baumrevision.com)

# Floor Plan



# 1261 SF Available

## Fully Equipped Restaurant Space

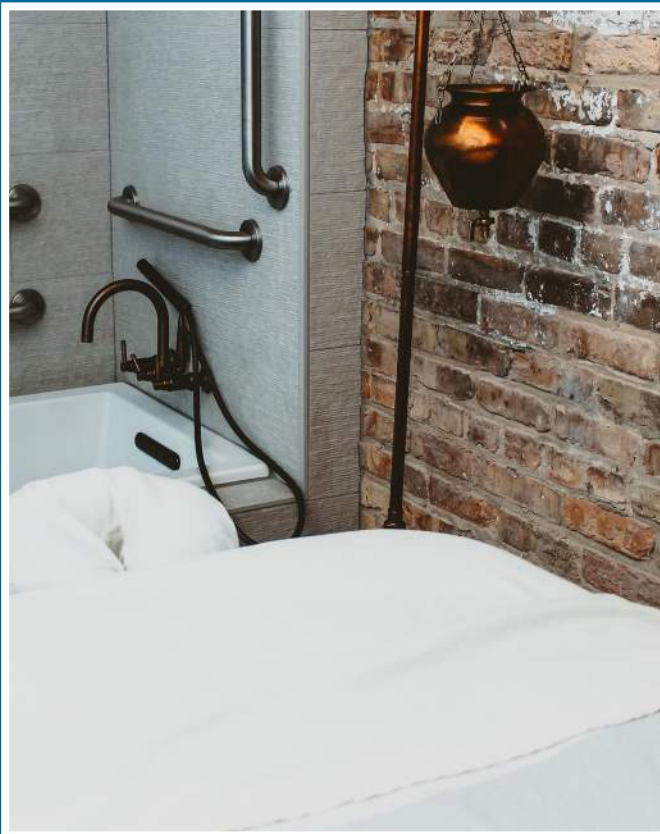
## FFE Included (partial):

- ⇒ Aurelia wave espresso maker
- ⇒ 34 chairs and 11 tables
- ⇒ 6 refrigerators/freezers
- ⇒ Moffat turbofan convection oven
- ⇒ Hot water heater/water softener

**Bryant Moroder**  
**608.577.1150**  
**bryant@baumrevision.com**

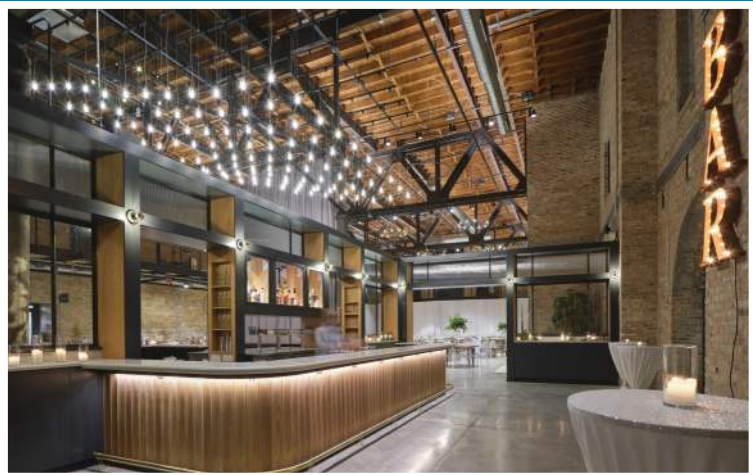
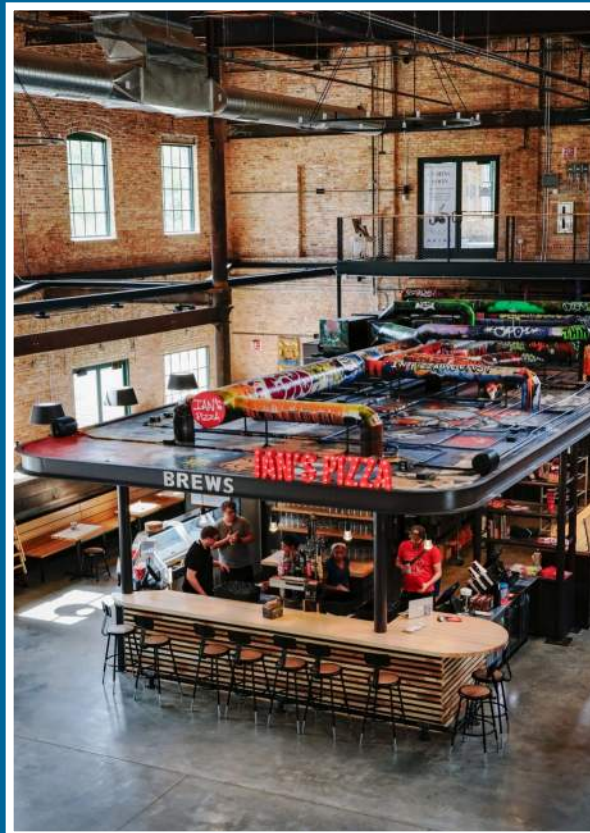
**GARVER** | TIM Q333  
*Madison, Wisconsin*





**GARVER**  
Madison, Wisconsin  
FEED MILL





**GARVER**  
Madison, Wisconsin  
FEED MILL