

Office Building Sale or Lease

2335 City View Dr

MADISON, WISCONSIN



NEWMARK

The Offering

2335 City View Dr, Madison, Wisconsin is a ±50,400 SF, two story slab-on-grade, Class A, general use office building which sits on 5.74 acres.

Constructed in 1999, the building has undergone numerous updates over the past four years, and now features updated carpeting, cabinetry, ceiling tiles, counters, doors, trim and an expanded patio with shade structure. The parking lot was also expanded at the same time and features LED light fixtures and code blue systems.

Located on the east side the Madison Metro near the I-90/I-94, and Hwy 151 interchange with convent access via High Crossing.

Offered for sale or lease at
\$6,875,000 or \$136 PSF or
\$14.75 PSF NNN.

CONTACT

Chuck Redjinski
t 608-663-6006
chuck.redjinski@nrmk.com



The information contained herein has been obtained from sources deemed reliable but has not been verified and no guarantee, warranty or representation, either express or implied, is made with respect to such information. Terms of sale or lease and availability are subject to change or withdrawal without notice.

2335 CITY VIEW DR, MADISON, WI

Property Overview

±50,400 SF

Gross Building Area

±5.74 AC

Land Area

±50,400 SF

Max Contiguous

±340

Parking Spots

±25,200 SF

Minimum Divisible

1999/2016

Year Built/Renovated

\$14.75 NNN

Lease Rate PSF

SE

Zoning

\$6,875,000

Sale Price

\$98,223.13

Taxes - 2020

\$136.41

Sale Price PSF

Existing Work Stations and
Office Furniture is Available



The information contained herein has been obtained from sources deemed reliable but has not been verified and no guarantee, warranty or representation, either express or implied, is made with respect to such information. Terms of sale or lease and availability are subject to change or withdrawal without notice.

Recent Improvements

Within the last four years, American Family Insurance has invested over \$3.6 million in the building.

Exterior

- Parking lot expansion
- Code blue systems installed
- LED light fixtures
- New curbs, gutters, asphalt, and pavements
- Expanded patio with a newly built shade structure
- Glazed seals on windows, recaulking, and roof fall protection

Interior

- New finishes on carpeting, ceiling tiles, counters, doors, and trim
- New cabinetry in breakroom & other work areas
- Updated paint job
- Updated plumbing fixtures and drinking fountains
- Gender neutral restroom with new showers
- New fire alarm and sprinkler system
- New paging system for emergencies
- Occupancy sensors installed in light fixtures
- Data cabling



Neighboring Points of Interests



	Metro	Drivetime
Capitol Building	16 Minutes	
Janesville	30 Minutes	
Portage	30 Minutes	
Illinois State Line	45 Minutes	
Milwaukee Metro	1 Hour	
Appleton	1.5 Hours	
O'Hare Int Airport	2 Hours	
La Crosse	2 Hours	
Eau Claire	2.5 Hours	
Minneapolis Metro	3.5 Hours	

Parcel Boundaries



2335 CITY VIEW DR, MADISON, WI

Photos

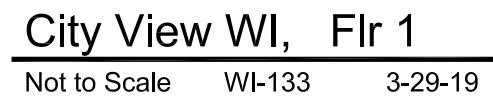


2335 CITY VIEW DR, MADISON, WI

Photos



The information contained herein has been obtained from sources deemed reliable but has not been verified and no guarantee, warranty or representation, either express or implied, is made with respect to such information. Terms of sale or lease and availability are subject to change or withdrawal without notice.





5-20-2021

STATE OF WISCONSIN BROKER DISCLOSURE TO NON-RESIDENTIAL CUSTOMERS

Wisconsin law requires all real estate licensees to give the following information about brokerage services to prospective customers.

Prior to negotiating on your behalf the brokerage firm, or an agent associated with the firm, must provide you the following disclosure statement.

BROKER DISCLOSURE TO CUSTOMERS

You are the customer of the brokerage firm (hereinafter Firm). The Firm is either an agent of another party in the transaction or a subagent of another firm that is the agent of another party in the transaction. A broker or a salesperson acting on behalf of the Firm, may provide brokerage services to you. Whenever the Firm is providing brokerage services to you, the Firm and its brokers and salespersons (hereinafter Agents) owe you, the customer, the following duties:

- The duty to provide brokerage services to you fairly and honestly.
- The duty to exercise reasonable skill and care in providing brokerage services to you.
- The duty to provide you with accurate information about market conditions within a reasonable time if you request it, unless disclosure of the information is prohibited by law.
- The duty to disclose to you in writing certain Material Adverse Facts about a property, unless disclosure of the information is prohibited by law (see “Definition of Material Adverse Facts” below).
- The duty to protect your confidentiality. Unless the law requires it, the Firm and its Agents will not disclose your confidential information or the confidential information of other parties (see “Confidentiality Notice To Customers” below).
- The duty to safeguard trust funds and other property held by the Firm or its Agents.
- The duty, when negotiating, to present contract proposals in an objective and unbiased manner and disclose the advantages and disadvantages of the proposals.

Please review this information carefully. An agent of the Firm can answer your questions about brokerage services, but if you need legal advice, tax advice, or a professional property inspection, contact an attorney, tax advisor, or property inspector.

This disclosure is required by section 452.135 of the Wisconsin statutes and is for information only. It is a plain-language summary of a broker’s duties to a customer under section 452.133 (1) of the Wisconsin statutes.

CONFIDENTIALITY NOTICE TO CUSTOMERS

The Firm and its Agents will keep confidential any information given to the Firm or its Agents in confidence, or any information obtained by the Firm or its Agents that a reasonable person would want to be kept confidential, unless the information must be disclosed by law or you authorize the Firm to disclose particular information. The Firm and its Agents shall continue to keep the information confidential after the Firm is no longer providing brokerage services to you.

The following information is required to be disclosed by law:

1. Material Adverse Facts, as defined in section 452.01 (5g) of the Wisconsin statutes (see “definition of material adverse facts” below).
 2. Any facts known by the Firm or its Agents that contradict any information included in a written inspection report on the property or real estate that is the subject of the transaction.
- To ensure that the Firm and its Agents is aware of what specific information you consider confidential, you may list that information below or provide that information to the Firm or its Agents by other means. At a later time, you may also provide the Firm or its Agents with other information that you consider to be confidential.

CONFIDENTIAL INFORMATION: _____

NON-CONFIDENTIAL INFORMATION (The following information may be disclosed by the Firm and its Agents): _____

(INSERT INFORMATION YOU AUTHORIZE TO BE DISCLOSED SUCH AS FINANCIAL QUALIFICATION INFORMATION)

SEX OFFENDER REGISTRY

Notice: You may obtain information about the sex offender registry and persons registered with the registry by contacting the Wisconsin Department of Corrections on the Internet at <http://www.doc.wi.gov/> or by phone at 608-240-5830.

DEFINITION OF MATERIAL ADVERSE FACTS

A “Material Adverse Fact” is defined in Wis. Stat. 452.01 (5g) as an adverse fact that a party indicates is of such significance, or that is generally recognized by a competent licensee as being of such significance to a reasonable party, that it affects or would affect the party’s decision to enter into a contract or agreement concerning a transaction or affects or would affect the party’s decision about the terms of such a contract or agreement.

An “Adverse Fact” is defined in Wis. Stat. 452.01 (1e) as a condition or occurrence that a competent licensee generally recognizes will significantly and adversely affect the value of the property, significantly reduce the structural integrity of improvements to real estate, or present a significant health risk to occupants of the property; or information that indicates that a party to a transaction is not able to or does not intend to meet his or her obligations under a contract or agreement made concerning the transaction.

No representation is made as to the legal validity of any provision or the adequacy of any provision on any specific transaction.

2335 City View Dr Madison, WI

Prepared by:

Chuck Redjinski

Director

t 608-663-6006

chuck.redjinski@nmrk.com

4602 S Biltmore Ln, Suite 117

Madison, WI 53718

nmrk.com

The information contained herein has been obtained from sources deemed reliable but has not been verified and no guarantee, warranty or representation, either express or implied, is made with respect to such information. Terms of sale or lease and availability are subject to change or withdrawal without notice.