

Revisions	
Date	Description
11/01/2017	CB 01
01/25/2018	CB 02

CONSTRUCTION  
DOCUMENTS

Drawing Date  
June 16, 2017

704 WILLIAMSON  
STREET

704 WILLIAMSON STREET  
MADISON, WI 53701

Project No.	FORWARD
216053.00	DEVELOPMENT
	GROUP, LLC

Sheet Title

ARCHITECTURAL SITE  
PLAN

Copyright © 2017 Kahler Slater, Inc. All rights reserved.

111 West Wisconsin Avenue, Milwaukee, Wisconsin 53203  
Telephone 414.272.2000 Fax 414.272.2001

44 East Mifflin Street, Suite 700, Madison, Wisconsin 53703  
Telephone 608.283.6300 Fax 608.283.6317

Sheet No.  
AS1.00

GENERAL NOTES - FLOOR PLAN

1. VERIFY DIMENSIONS, CONDITIONS AND FINISHES PRIOR TO PRICING OR PROCEEDING WITH WORK.
2. DO NOT SCALE FROM DRAWINGS, BRING ANY DISCREPANCIES TO ARCHITECTS ATTENTION IMMEDIATELY.
3. COORDINATE LOCATIONS AND QUANTITY OF WORK WITH MECHANICAL, ELECTRICAL AND PLUMBING CONTRACTORS.
4. REFER TO PARTITION SCHEDULE ON G0.60 FOR TYPICAL PARTITION TYPES, STAIRS, ELEVATOR, MECHANICAL AND OTHER SHAFT WALLS TO HAVE 2-HOUR FIRE RATING. GUESTROOM CORRIDOR WALLS TO HAVE 1/2 HOUR FIRE RATING. WALLS SEPARATING ADJACENT GUESTROOMS TO HAVE 1 HOUR FIRE RATING.
5. PIPING, CONDUIT AND RELATED MECHANICAL AND ELECTRICAL ITEMS SHALL BE CONCEALED WITHIN GYPSUM BOARD FURRING IN FINISHED AREAS.
6. PROVIDE METAL PLATE AND/OR WOOD BLOCKING IN ALL WALLS & PARTITIONS IN PUBLIC AND PRIVATE SPACES FOR ALL WALL-MOUNTED EQUIPMENT, INCLUDING BUT NOT LIMITED TO: LIGHT FIXTURES, MIRRORS, AND TOILET ACCESSORIES. VERIFY LOCATION WITH ELEVATIONS AND EQUIPMENT.
7. CONFIRM ALL INTERIOR UNIT WALLS WITH ENLARGED TYPICAL UNIT PLANS.
8. BRING ANY DISCREPANCIES TO ARCHITECTS ATTENTION IMMEDIATELY.
9. SEE SHEET A4.40 - A4.50 FOR ENLARGED UNIT PLANS.
10. PROVIDE SOLID BLOCKING AT ALL TOILETS AND BATHTUBS FOR FUTURE INSTALLATION OF GRAB BARS. INSTALL PER FHA GUIDELINES AND REQUIREMENTS.
11. REFER TO STANDARD MOUNTING HEIGHTS AS SHOWN ON SHEET G0.60 FOR ALL BATHROOM ACCESSORIES AND REQUIRED GRAB BARS.
12. ALL UNITS TO BE TYPE B ACCESSIBLE UNITS UNLESS NOTED OTHERWISE.
13. SEE A5.20 FOR ENLARGED BALCONY PLANS AND ELEVATIONS.
14. SEE A5.50 FOR TYPICAL FIRE BLOCKING DETAILS.

KEY NOTES

- |     |   |
|-----|---|
| 100 | DIAMOND PLATE METAL PAN STAIRS  |
| 102 | CAST IN PLACE CONCRETE STAIR  |
| 103 | METAL GRATING STAIR - GALVANIZED  |
| 118 | USPS DELIVERY POSTAL SPECIALTIES - TENANT MAIL AND PACKAGE BOXES  |
| 119 | INTERCOM - SEE MEP SCOPE DOCUMENTS  |
| 122 | MACHINE-ROOMLESS 3500 LB PASSENGER ELEVATOR - SPEED 300 FPM VERIFY ELEVATOR PIT & OVERRUN REQUIREMENTS W/ MANUF. INTERIOR FINISHES TO BE SELECTED FROM A RANGE OF STANDARD FINISHES |
| 124 | BICYCLE RACKS - SURFACE MOUNTED   |
| 135 | CONCRETE FILLED STEEL BOLLARD   |
| 136 | 42" STEEL PIPE RAIL   |
| 141 | CORNER GUARD - BASIS OF DESIGN - INPRO SURFACE MOUNT STAINLESS STEEL CORNER GUARD TYPE 430 16 GAUGE 1 1/2" WINGS, HEIGHT - 48 INCHES AFF  |

PLAN LEGEND

- |  |  |
|--|--|
|  | FLOOR DRAIN - SLOPE TOPPING / STRUCTURE TO DRAINAGE @ 1/8" / 1'-0" (MIN) |
|  | ROOF DRAIN - SLOPE TAPERED RIGID INSULATION @ 1/4" / 1'-0" (MIN)         |
|  | FIRE EXTINGUISHER CABINET (FEC)  |
|  | FIRE EXTINGUISHER (FE)   |
|  | ALIGN FACE OF WALLS  |
|  | INDICATES ACCESSIBLE UNIT  |

PLUMBING FIXTURE SCHEDULE

PF-1	WATER CLOSET - BASIS OF DESIGN - DELTA ELONGATED BOWL C41901-WH
PF-2	BATHROOM SINK - BASIS OF DESIGN - KOHLER 19" UNDERMOUNT K-2211
PF-3	BATHROOM FAUCET - BASIS OF DESIGN - DELTA TRNSIC 559LFP-P1
PF-6	KITCHEN SINK - BASIS OF DESIGN - MOEN 2000 SERIES 28.25" X 18.5" STAINLESS STEEL 20 GAUGE DOUBLE BOWL SINK
PF-7	KITCHEN FAUCET - BASIS OF DESIGN - DELTA CHROME TRNSIC PULL-DOWN KITCHEN FAUCET WITH MAGNETIC DOCKING SPRAY HEAR #9159-DST

TOILET AND BATH ACCESSORY SCHEDULE

PA-5	SOAP DISPENSER - BASIS OF DESIGN - BRADLEY DIPLOMAT SERIES - MODEL # 6A00 or 6A01-11
PA-6	HAND DRYER - BASIS OF DESIGN - DYSON AIRBLADE dB - MODEL #AB14 - FINISH GRAY

Revisions

Date	Description
11/01/2017	CB 01
01/25/2018	CB 02
03/21/2018	CB 04
04/27/2018	CB 05
06/07/2018	CB 06
07/19/2018	CB 07

CONSTRUCTION DOCUMENTS

Drawing Date  
June 16, 2017

704 WILLIAMSON STREET  
STREET

704 WILLIAMSON STREET  
MADISON, WI 53701

Project No.  
216053.00

FORWARD  
DEVELOPMENT  
GROUP, LLC

Sheet Title

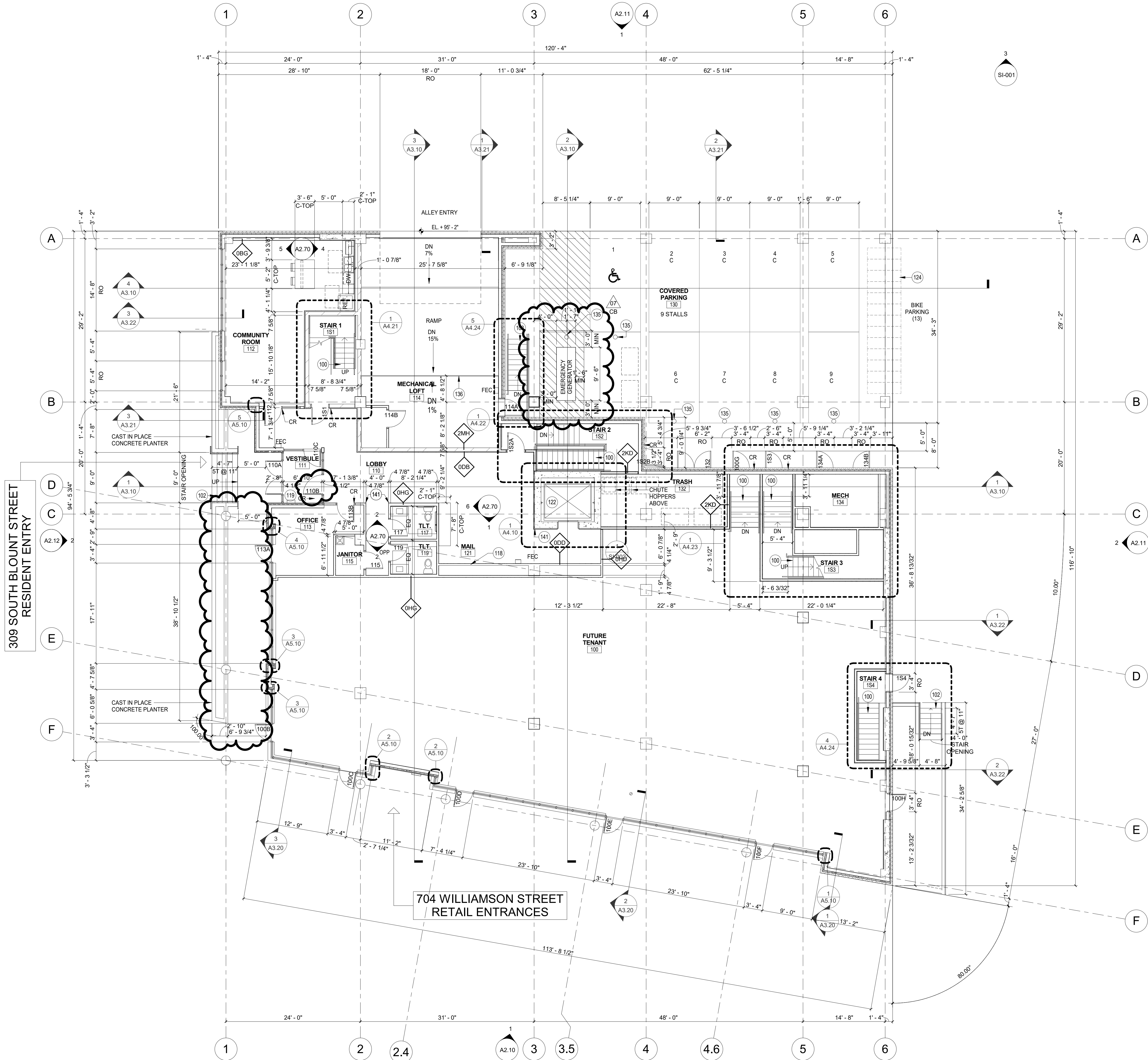
FLOOR PLAN - FIRST FLOOR

Copyright © 2017 Kahler Slater, Inc. All rights reserved.  
111 West Wisconsin Avenue, Milwaukee, Wisconsin 53203  
Telephone 414.272.2000 Fax 414.272.2001

44 East Millin Street, Suite 700, Madison, Wisconsin 53703  
Telephone 608.283.6300 Fax 608.283.6317

Sheet No.

A1.11



1 FIRST FLOOR PLAN  
1/8" = 1'-0"



GENERAL NOTES - FLOOR PLAN

1. VERIFY DIMENSIONS, CONDITIONS AND FINISHES PRIOR TO PRICING OR PROCEEDING WITH WORK.
2. DO NOT SCALE FROM DRAWINGS, BRING ANY DISCREPANCIES TO ARCHITECTS ATTENTION IMMEDIATELY.
3. COORDINATE LOCATIONS AND QUANTITY OF WORK WITH MECHANICAL, ELECTRICAL AND PLUMBING CONTRACTORS.
4. REFER TO PARTITION SCHEDULE ON G0.80 FOR TYPICAL PARTITION TYPES. STAIRS, ELEVATOR, MECHANICAL AND OTHER SHAFT WALLS TO HAVE 2-HOUR FIRE RATING. GUESTROOM CORRIDOR WALLS TO HAVE 1/2 HOUR FIRE RATING. WALLS SEPARATING ADJACENT GUESTROOMS TO HAVE 1 HOUR FIRE RATING.
5. PIPING, CONDUIT AND RELATED MECHANICAL AND ELECTRICAL ITEMS SHALL BE CONCEALED WITHIN GYPSUM BOARD FURRING IN FINISHED AREAS.
6. PROVIDE METAL PLATE AND/OR WOOD BLOCKING IN ALL WALLS & PARTITIONS IN PUBLIC AND PRIVATE SPACES FOR ALL WALL-MOUNTED EQUIPMENT, INCLUDING BUT NOT LIMITED TO: LIGHT FIXTURES, MIRRORS, AND TOILET ACCESSORIES. VERIFY LOCATION WITH ELEVATIONS AND EQUIPMENT.
7. CONFIRM ALL INTERIOR UNIT WALLS WITH ENLARGED TYPICAL UNIT PLANS.
8. BRING ANY DISCREPANCIES TO ARCHITECTS ATTENTION IMMEDIATELY.
9. SEE SHEET A4.40 - A4.50 FOR ENLARGED UNIT PLANS.
10. PROVIDE SOLID BLOCKING AT ALL TOILETS AND BATHTUBS FOR FUTURE INSTALLATION OF GRAB BARS. INSTALL PER FHA GUIDELINES AND REQUIREMENTS.
11. REFER TO STANDARD MOUNTING HEIGHTS AS SHOWN ON SHEET G0.80 FOR ALL BATHROOM ACCESSORIES AND REQUIRED GRAB BARS.
12. ALL UNITS TO BE TYPE B ACCESSIBLE UNITS UNLESS NOTED OTHERWISE.
13. SEE A5.20 FOR ENLARGED BALCONY PLANS AND ELEVATIONS.
14. SEE A5.50 FOR TYPICAL FIRE BLOCKING DETAILS.

KEY NOTES

- |     |  |
|-----|--|
| 100 | DIAMOND PLATE METAL PAN STAIRS   |
| 122 | MACHINE-ROOMLESS 3500 LB PASSENGER ELEVATOR - SPEED 500 FPM VERIFY ELEVATOR PIT & OVERSUN REQUIREMENTS W/ MANUF. INTERIOR FINISHES TO BE SELECTED FROM A RANGE OF STANDARD FINISHES. |
| 124 | BICYCLE RACKS - SURFACE MOUNTED  |
| 136 | 42" STEEL PIPE RAIL  |

PLAN LEGEND

- |  |   |
|--|---|
|  | FLOOR DRAIN - SLOPE TOPPING / STRUCTURE TO DRAINAGE @ 1/8" 11'-0" (MIN) |
|  | ROOF DRAIN - SLOPE TAPERED RIGID INSULATION @ 1/4" 11'-0" (MIN)         |
|  | FIRE EXTINGUISHER CABINET (FEC)   |
|  | FIRE EXTINGUISHER (FE)  |
|  | ALIGN FACE OF WALLS   |
|  | INDICATES ACCESSIBLE UNIT   |

Revisions	
Date	Description
11/01/2017	CB 01
01/25/2018	CB 02
04/27/2018	CB 05
07/19/2018	CB 07

CONSTRUCTION DOCUMENTS

Drawing Date  
June 16, 2017

704 WILLIAMSON STREET  
MADISON, WI 53701

704 WILLIAMSON STREET  
MADISON, WI 53701

Project No.  
216053.00

FORWARD DEVELOPMENT GROUP, LLC

Sheet Title

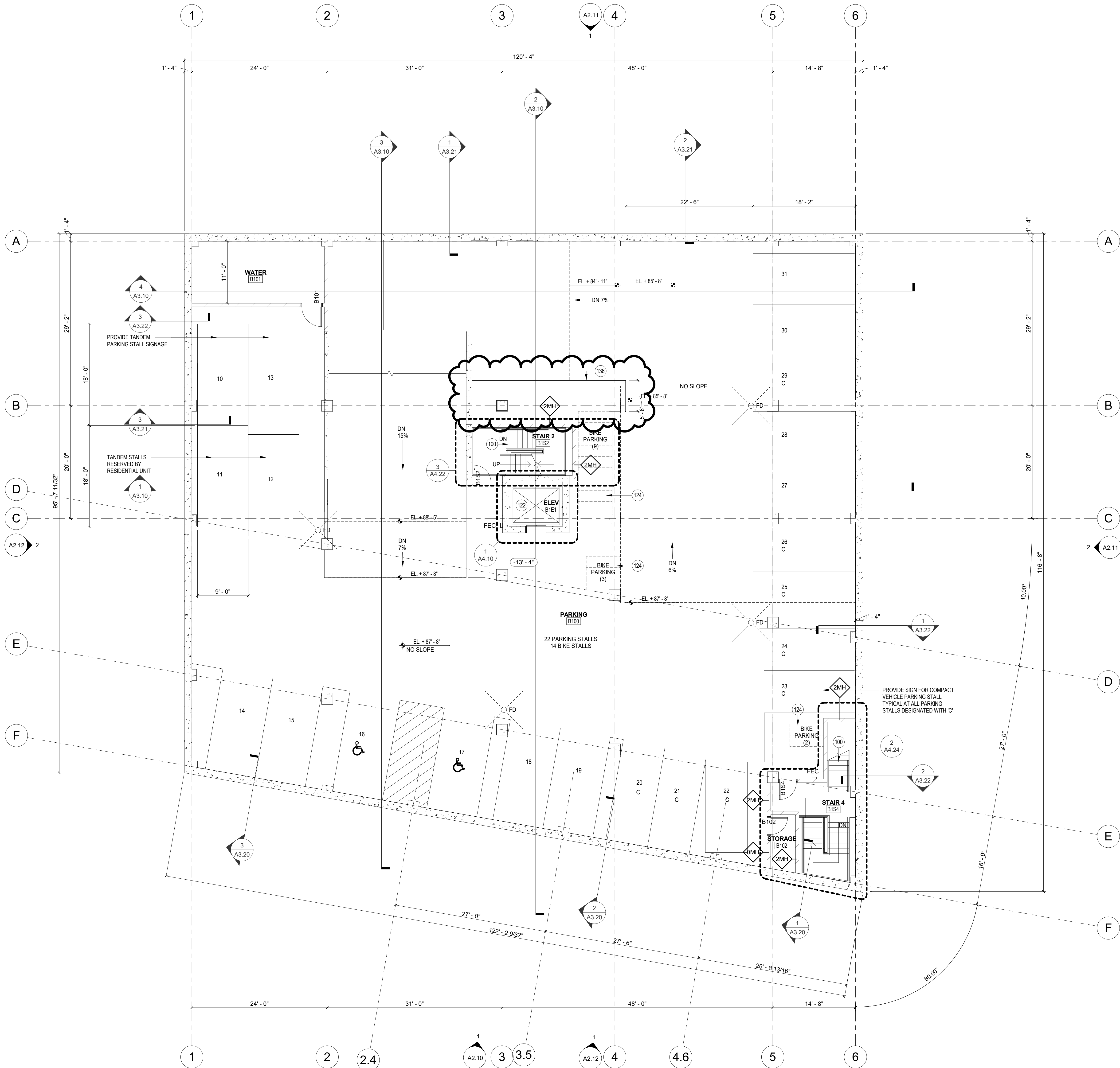
FLOOR PLAN -  
BASEMENT 1

Copyright © 2017 Kahler Slater, Inc. All rights reserved.  
111 West Wisconsin Avenue, Milwaukee, Wisconsin 53203  
Telephone 414.272.2000 Fax 414.272.2001

44 East Millin Street, Suite 700, Madison, Wisconsin 53703  
Telephone 608.283.6300 Fax 608.283.6317

Sheet No.

A1.B1



1 B1-PARKING  
1/8" = 1'-0"

GENERAL NOTES - FLOOR PLAN

1. VERIFY DIMENSIONS, CONDITIONS AND FINISHES PRIOR TO PRICING OR PROCEEDING WITH WORK.
2. DO NOT SCALE FROM DRAWINGS, BRING ANY DISCREPANCIES TO ARCHITECTS ATTENTION IMMEDIATELY.
3. COORDINATE LOCATIONS AND QUANTITY OF WORK WITH MECHANICAL, ELECTRICAL AND PLUMBING CONTRACTORS.
4. REFER TO PARTITION SCHEDULE ON G0.60 FOR TYPICAL PARTITION TYPES. STAIRS, ELEVATOR, MECHANICAL AND OTHER SHAFT WALLS TO HAVE 2-HOUR FIRE RATING. GUESTROOM CORRIDOR WALLS TO HAVE 1/2 HOUR FIRE RATING. WALLS SEPARATING ADJACENT GUESTROOMS TO HAVE 1 HOUR FIRE RATING.
5. PIPING, CONDUIT AND RELATED MECHANICAL AND ELECTRICAL ITEMS SHALL BE CONCEALED WITHIN GYPSUM BOARD FURRING IN FINISHED AREAS.
6. PROVIDE METAL PLATE AND/OR WOOD BLOCKING IN ALL WALLS & PARTITIONS IN PUBLIC AND PRIVATE SPACES FOR ALL WALL-MOUNTED EQUIPMENT, INCLUDING BUT NOT LIMITED TO: LIGHT FIXTURES, MIRRORS, AND TOILET ACCESSORIES. VERIFY LOCATION WITH ELEVATIONS AND EQUIPMENT.
7. CONFIRM ALL INTERIOR UNIT WALLS WITH ENLARGED TYPICAL UNIT PLANS.
8. BRING ANY DISCREPANCIES TO ARCHITECT'S ATTENTION IMMEDIATELY.
9. SEE SHEET A4.40 - A4.50 FOR ENLARGED UNIT PLANS.
10. PROVIDE SOLID BLOCKING AT ALL TOILETS AND BATHTUBS FOR FUTURE INSTALLATION OF GRAB BARS. INSTALL PER FHA GUIDELINES AND REQUIREMENTS.
11. REFER TO STANDARD MOUNTING HEIGHTS AS SHOWN ON SHEET G0.60 FOR ALL BATHROOM ACCESSORIES AND REQUIRED GRAB BARS.
12. ALL UNITS TO BE TYPE B ACCESSIBLE UNITS UNLESS NOTED OTHERWISE.
13. SEE A5.20 FOR ENLARGED BALCONY PLANS AND ELEVATIONS.
14. SEE A5.50 FOR TYPICAL FIRE BLOCKING DETAILS.

KEY NOTES

- |     |   |
|-----|---|
| 100 | DIAMOND PLATE METAL PAN STAIRS  |
| 122 | MACHINE-ROOMLESS 3500 LB PASSENGER ELEVATOR - SPEED 500 FPM VERIFY ELEVATOR PIT & OVERRUN REQUIREMENTS W/ MANUF. INTERIOR FINISHES TO BE SELECTED FROM A RANGE OF STANDARD FINISHES |
| 124 | BICYCLE RACKS - SURFACE MOUNTED   |
| 136 | 42" STEEL PIPE RAIL   |

PLAN LEGEND

- |  |   |
|--|---|
|  | FLOOR DRAIN - SLOPE TOPPING / STRUCTURE TO DRAINAGE @ 1/8" 11'-0" (MIN) |
|  | ROOF DRAIN - SLOPE TAPERED RIGID INSULATION @ 1/4" 11'-0" (MIN)         |
|  | FIRE EXTINGUISHER CABINET (FEC)   |
|  | FIRE EXTINGUISHER (FE)  |
|  | ALIGN FACE OF WALLS   |
|  | INDICATES ACCESSIBLE UNIT   |

Revisions	
Date	Description
11/01/2017	CB 01
01/25/2018	CB 02
07/19/2018	CB 07

CONSTRUCTION DOCUMENTS

Drawing Date  
June 16, 2017

704 WILLIAMSON STREET

704 WILLIAMSON STREET  
MADISON, WI 53701

Project No.  
216053.00

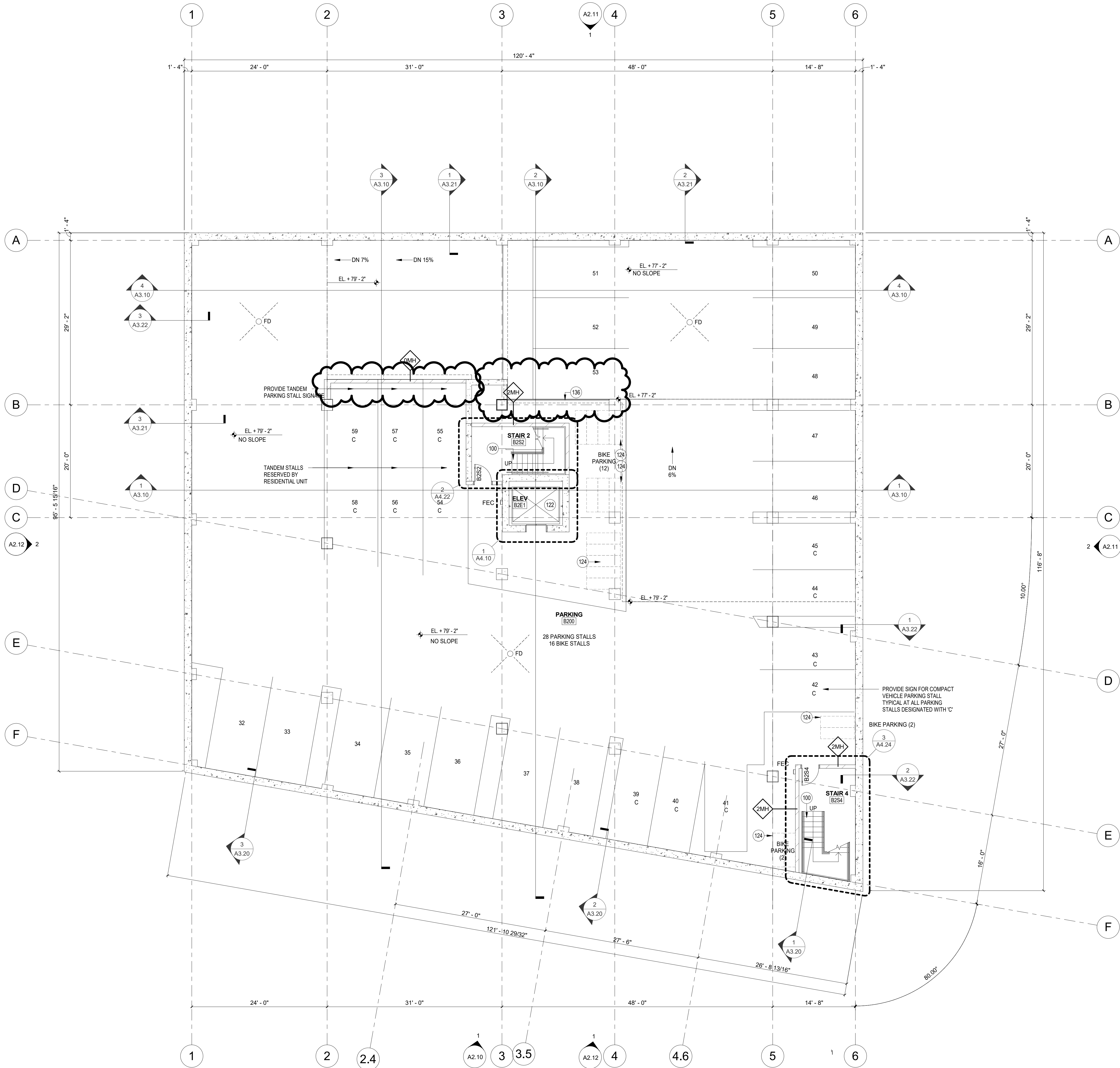
FORWARD DEVELOPMENT GROUP, LLC

FLOOR PLAN - BASEMENT 2

Copyright © 2017 Kahler Slater, Inc. All rights reserved.  
111 West Wisconsin Avenue, Milwaukee, Wisconsin 53203  
Telephone 414.272.2000 Fax 414.272.2001

44 East Millin Street, Suite 700, Madison, Wisconsin 53703  
Telephone 608.283.6300 Fax 608.283.6317

Sheet No.  
A1.B2



1 B2-PARKING  
1/8" = 1'-0"

