



SLABY & ASSOCIATES

Goodwill Location

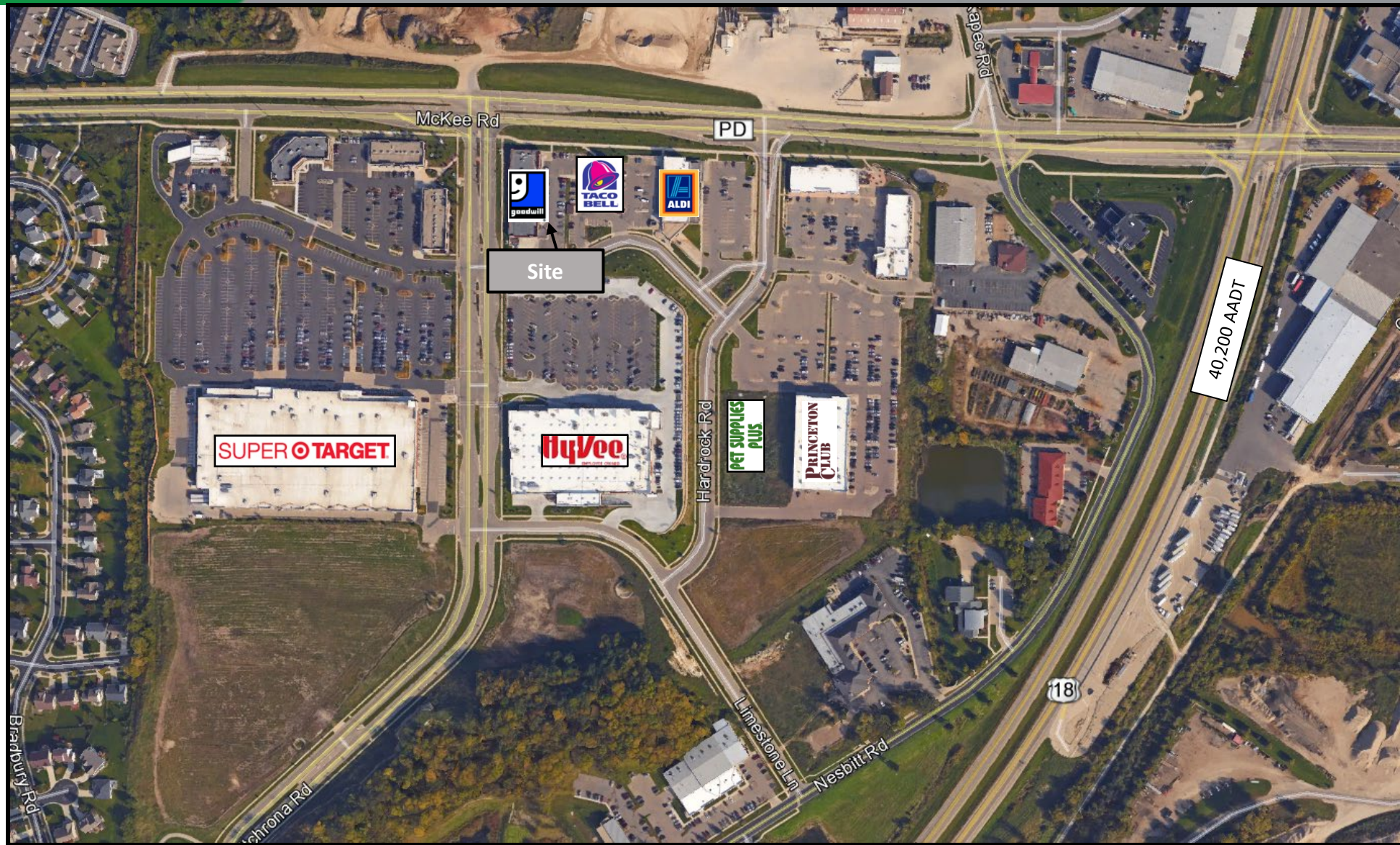
Fitchburg, WI

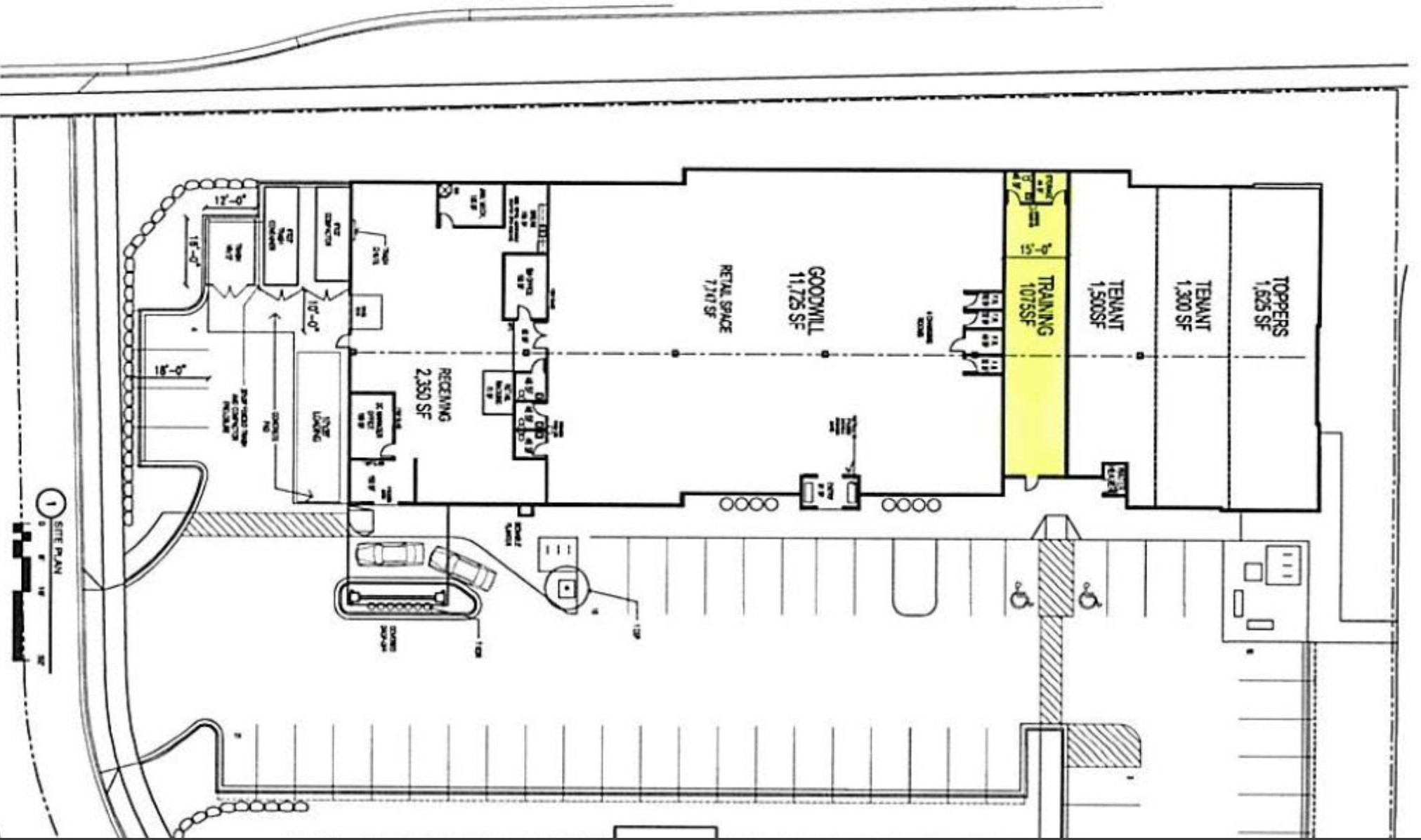
Located on Madison's southwest side, Fitchburg is a suburb of Madison. As of January 1st, 2019, the population is 40,702 and still growing.

Join in with these big-name retailers & restaurants:

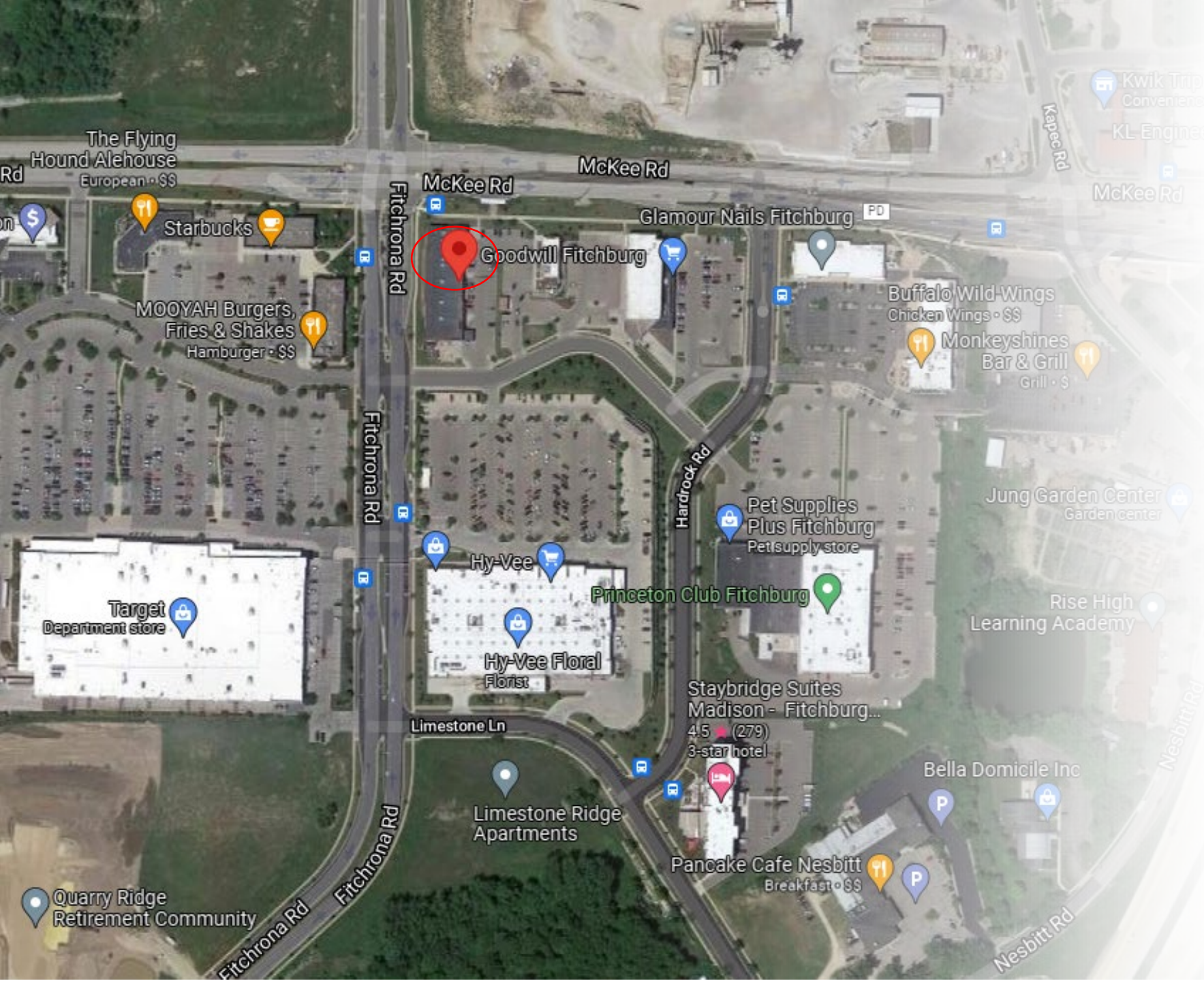








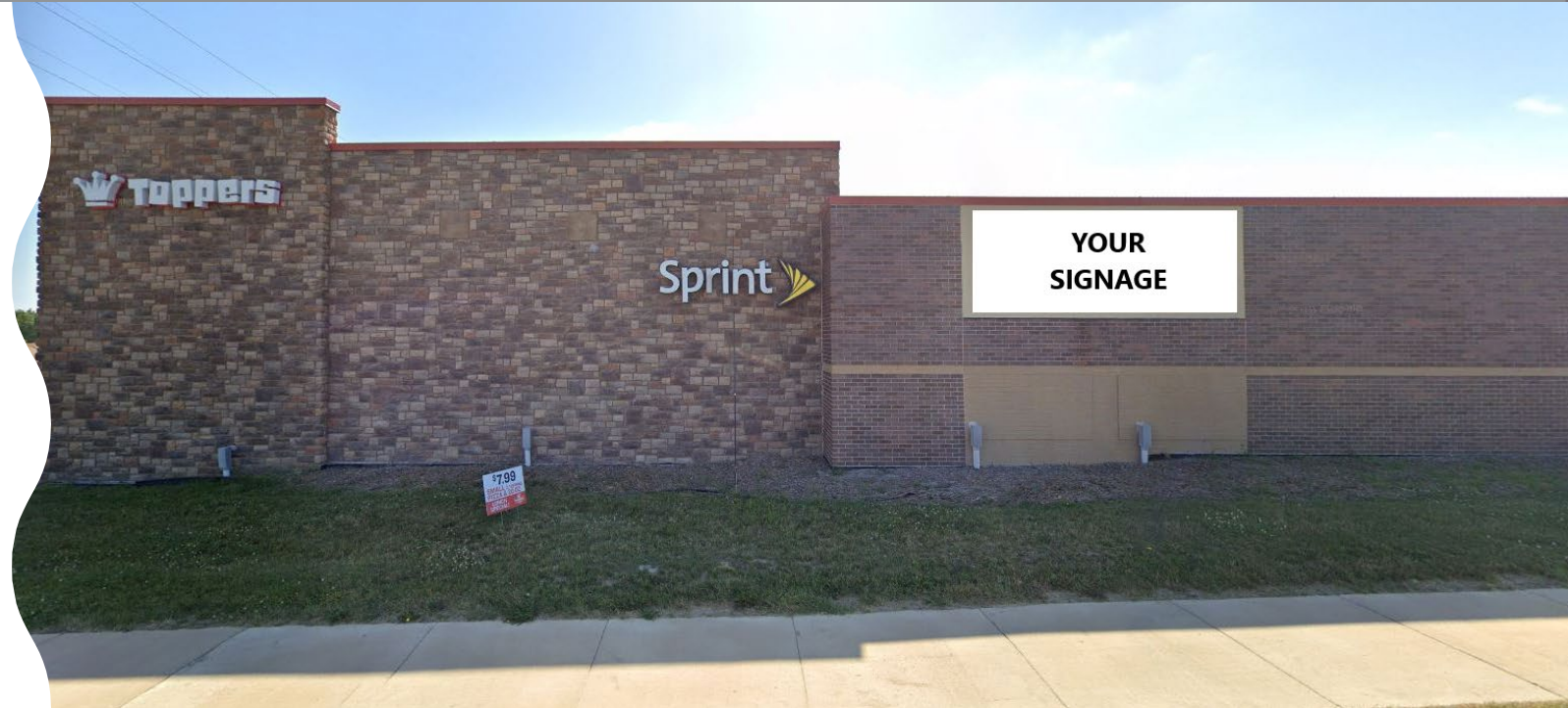
1 SITE PLAN



Next to: Goodwill, Sprint, Fantastic Sam's Hair Salon, and Toppers Pizza

Nearby to: Taco Bell, Hy-Vee, Super Target, Buffalo Wild Wings, Princeton Club, and so much more!

- Signage on 2 sides of building
- Monument Sign
- High traffic area





**Location from McKee Road
High Visibility and High Traffic**

Bring Your Vision To Us And Make It Come To Life!



General Information

- 1,095 sqft
- \$2,555.00/month plus CAM
- CAM estimated at \$655.18/month
- Leasing options: 1, 3, 5 years
- Available this upcoming Spring



SLABY & ASSOCIATES
COMMERCIAL REAL ESTATE
BROKERAGE

1100 John P Livesey Blvd, Verona, WI 53593
Office: 608-333-4130 Fax: 608-845-2296
<https://slabyandassociates.com>

Please Call or Email with Any Questions!

Dean Slaby
President

Email: DeanS@slabyandassociates.com

Mobile: 608-219-8506