



5704-5750 Raymond Road Madison, WI

Property Highlights

- Available Space: 400 – 8,122 SF
- Can be divided or combined
- Lease Price: \$10- \$13/PSF/NNN
- CAM: \$3.85/PSF
- Building Size: 55,000 SF
- Land Size: 2.97 Acres
- Ample Parking – 200 Parking Spaces
- Located on the corner of Whitney Way and Raymond Road
- Strong Visibility and Access
- Strong Demographics
- Anchored by Walgreens and Madison Public Library



For more Information:

Dan Holvick

Partner/ Managing Broker

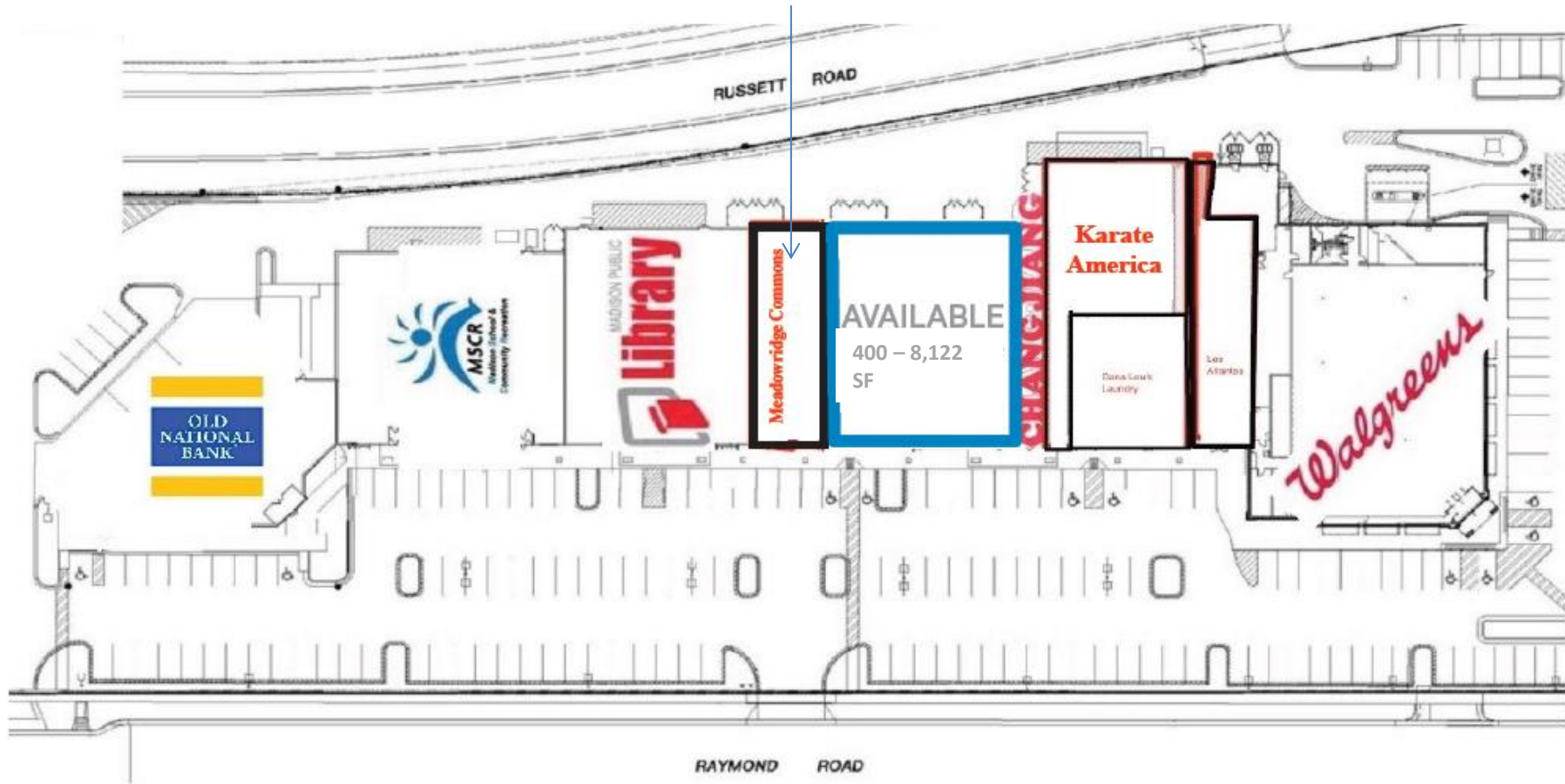
608- 220- 7740 • dan.holvick@naimadison.com

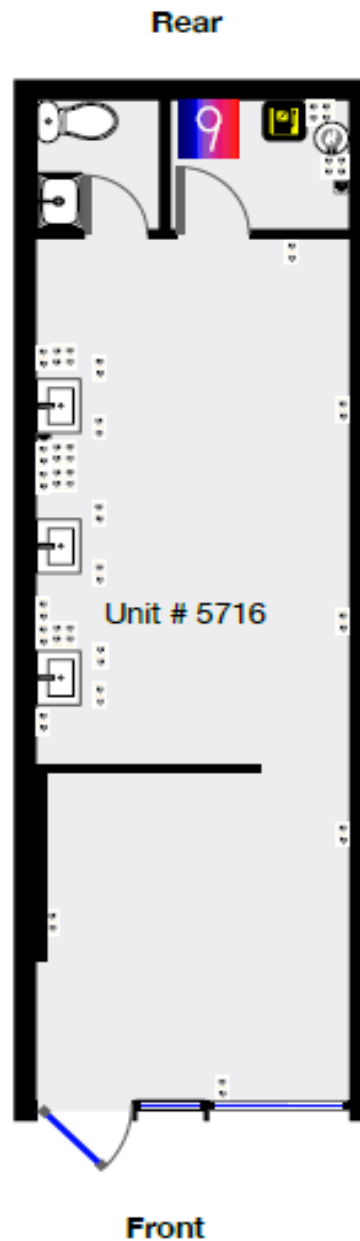
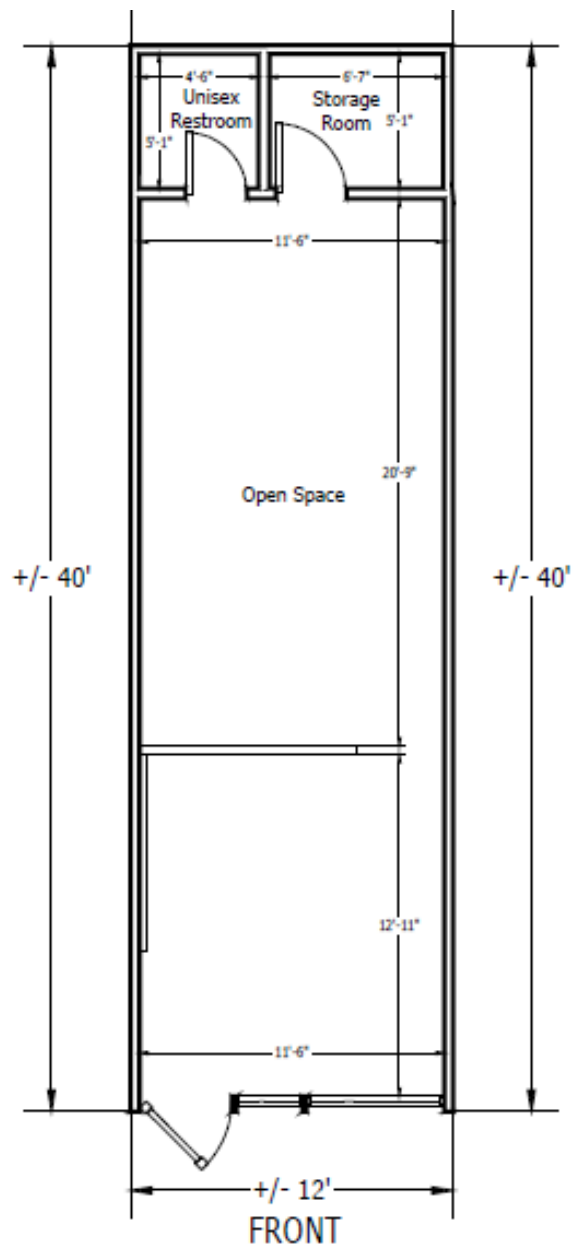
Michael Barrett

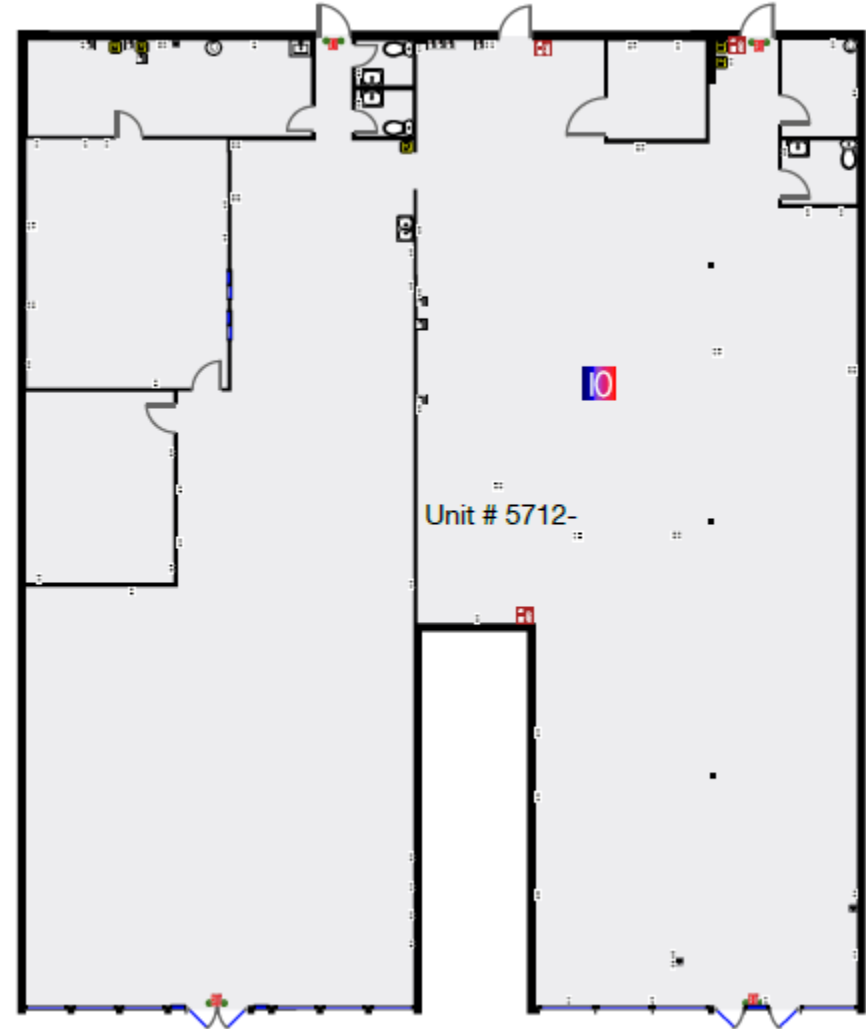
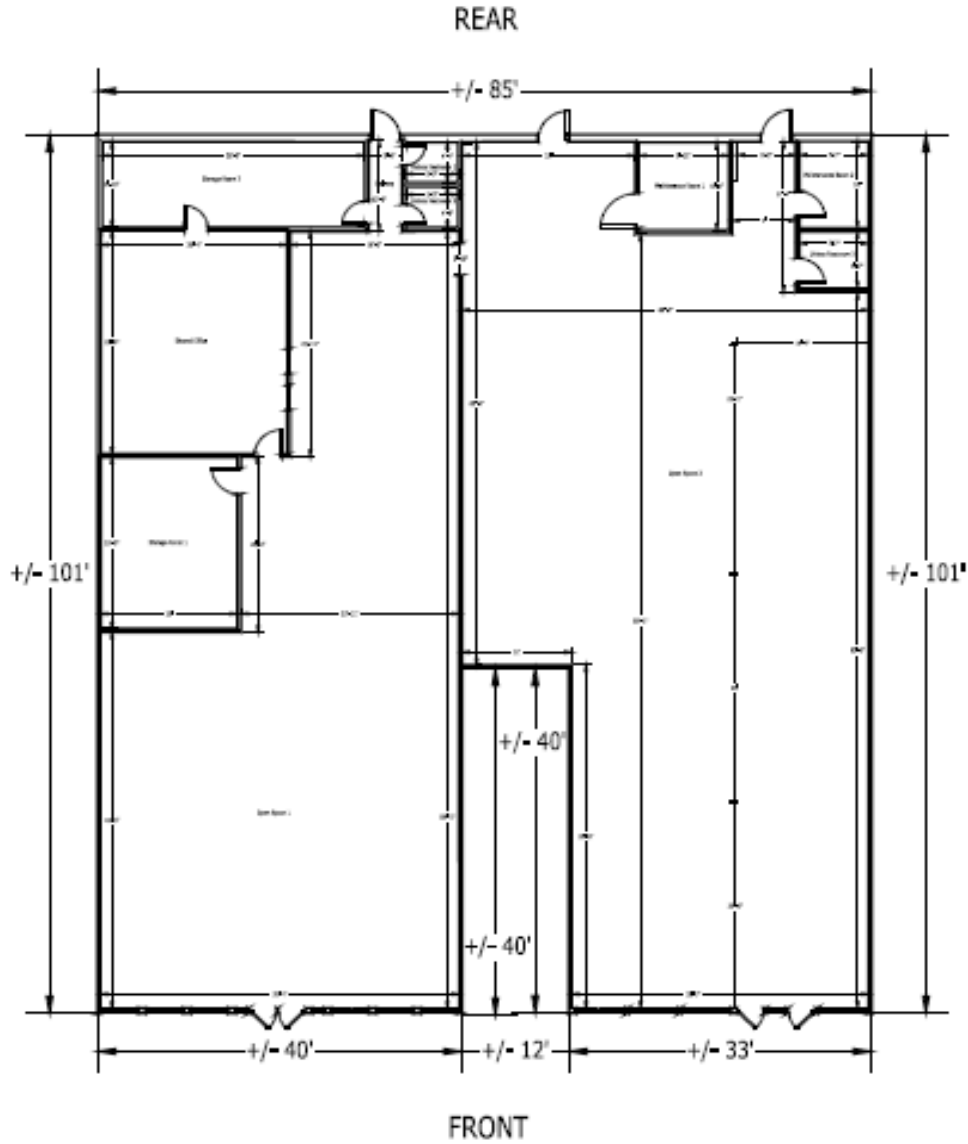
Senior Broker

608- 558-0663 • michael.barrett@naimadison.com

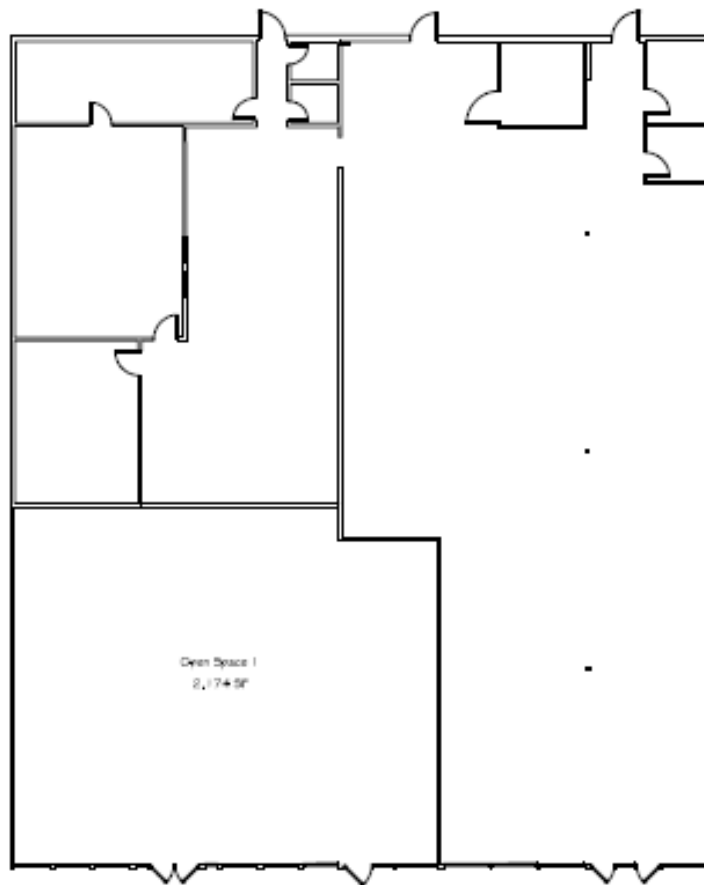




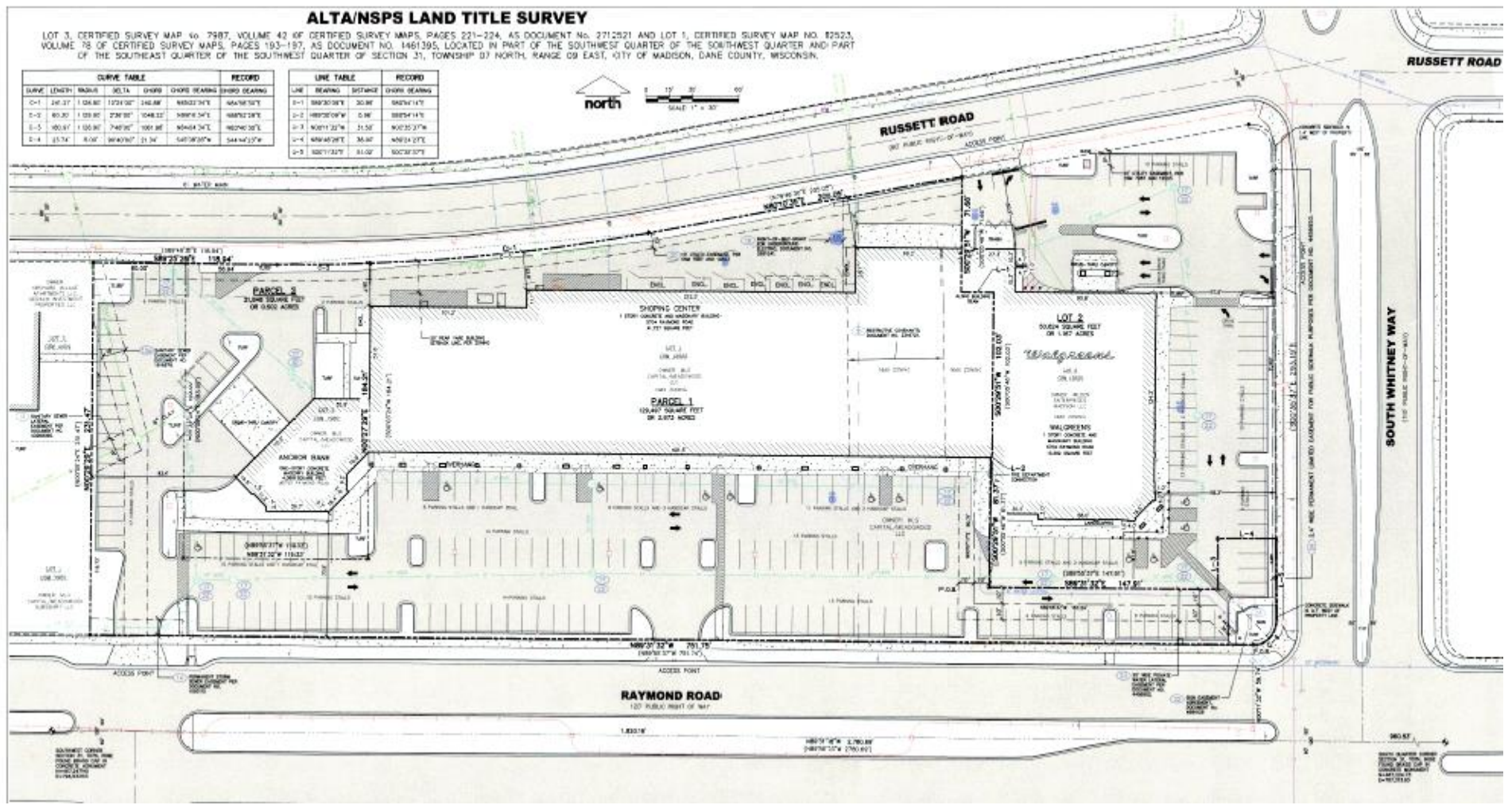


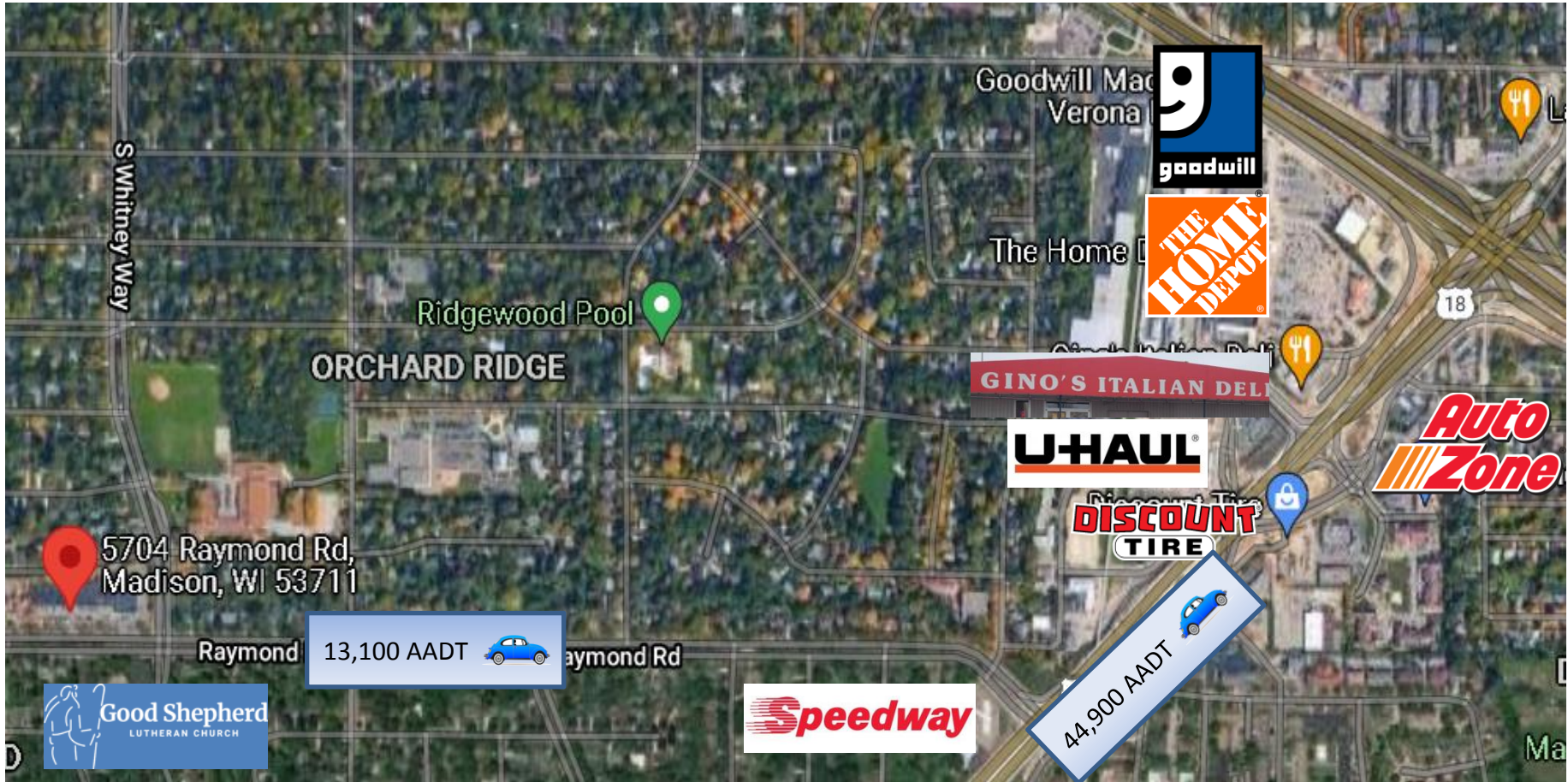


REAR



FRONT





Location Facts & Demographics

Demographics are determined by a 10 minute drive from 5704-5750 Raymond Rd, Madison, WI 53711

CITY, STATE

Madison, WI

POPULATION

51,284

AVG. HHSIZE

2.39

MEDIAN HH INCOME

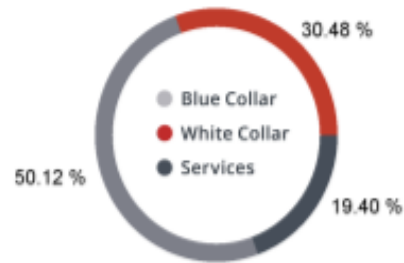
\$72,827

HOME OWNERSHIP

Renters: **8,633**

Owners: **12,752**

EMPLOYMENT



55.63 %
Employed

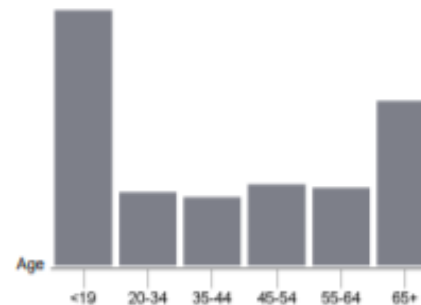
1.30 %
Unemployed

EDUCATION

High School Grad: **16.68 %**
Some College: **19.02 %**
Associates: **7.81 %**
Bachelors: **51.15 %**

GENDER & AGE

48.26 % 51.74 %

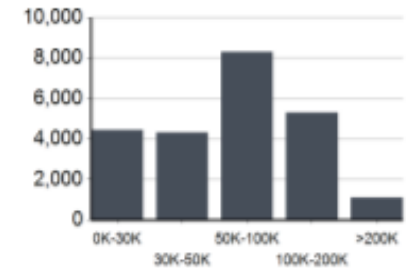


RACE & ETHNICITY

White: **62.31 %**
Asian: **3.51 %**
Native American: **0.10 %**
Pacific Islanders: **0.00 %**
African-American: **10.53 %**
Hispanic: **14.14 %**
Two or More Races: **9.40 %**

Catylist Research

INCOME BY HOUSEHOLD



HH SPENDING

