

DOOR SCHEDULE										
DOOR #	TYPE	SIZE	MATERIAL	FRAME	MATERIAL	GLAZING	HARDWARE	RATING	DETAILS	REMARKS
117	FLUSH	3'-0" X 7'-0" X 1-3/4"	SOLID CORE WOOD	SINGLE	HOLLOW METAL	---	SET #2	---	E/A4.2	F/A4.2
118	FLUSH	3'-0" X 7'-0" X 1-3/4"	SOLID CORE WOOD	SINGLE	HOLLOW METAL	---	SET #2	---	E/A4.2	F/A4.2
116	FULL GLAZED	3'-0" X 7'-0" X 1-3/4"	SOLID CORE WOOD	SINGLE	HOLLOW METAL	TEMPERED	SET #3	---	H/A4.2	J/A4.2
120	CASED OPENING	3'-0" X 7'-0" X 1-3/4"	---	SINGLE	HOLLOW METAL	---	---	---	E/A4.2	F/A4.2
121	FULL GLAZED	3'-0" X 7'-0" X 1-3/4"	ALUMINUM	SINGLE	ALUMINUM	INSULATING	SET #1	---	B/A4.2	C/A4.2

WINDOW SCHEDULE				
MARK	R.O.	GLAZING	OPERATION	REMARKS
(A)	4'-6" X 4'-8 1/2"	THERMAL LOW-E	FIXED	
(B)	5'-3 1/2" X 4'-8 1/2"	THERMAL LOW-E	FIXED	

DOOR HARDWARE SETS

SET #1: ALUMINUM STOREFRONT SET

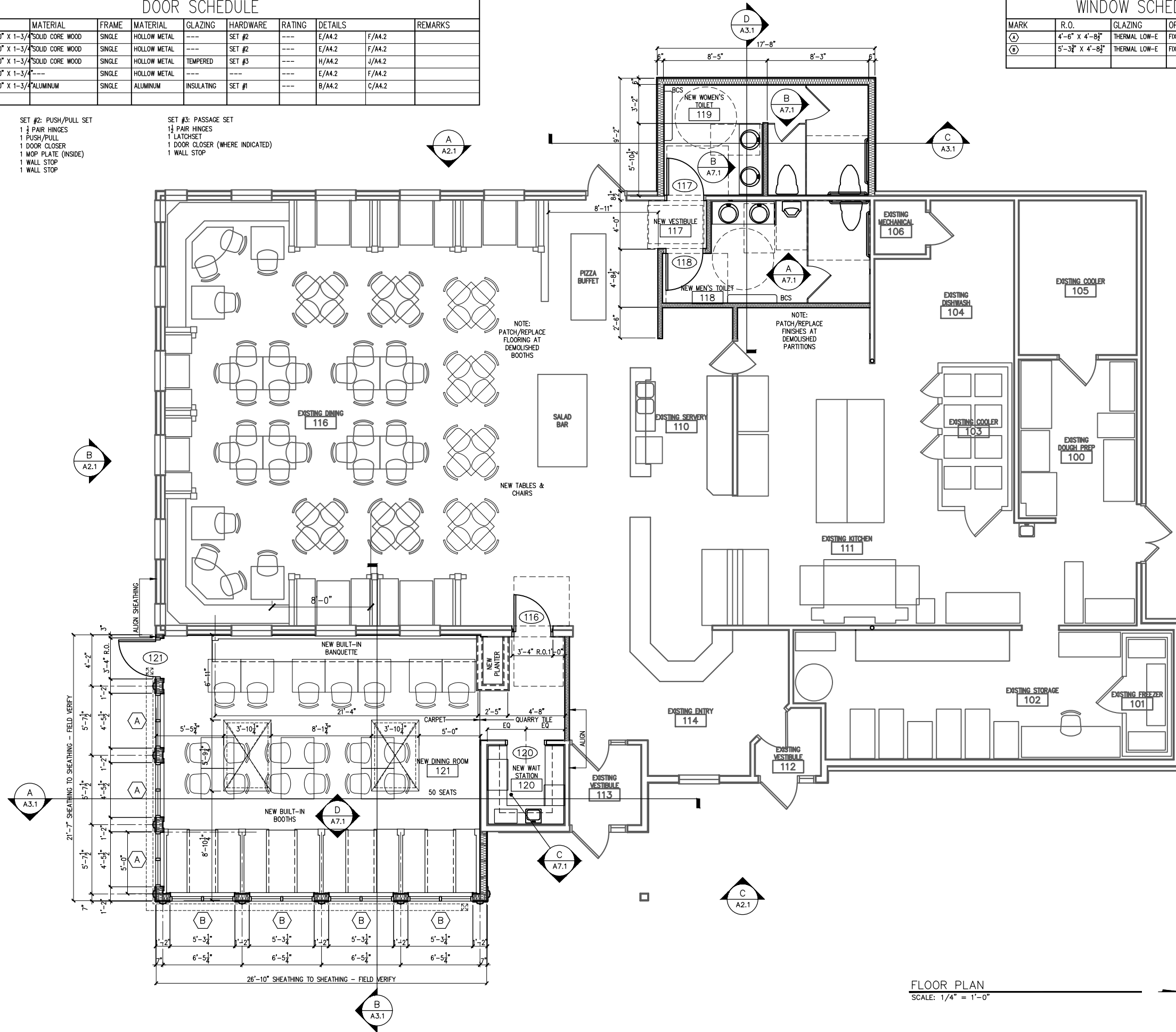
1 CYLINDER LOCK
BALANCE OF HARDWARE BY DOOR MANUFACTURER

SET #2: PUSH/PULL SET

1 1/2 PAIR HINGES
1 PUSH/PULL
1 DOOR CLOSER
1 NIP PLATE (INSIDE)
1 WALL STOP
1 WALL STOP

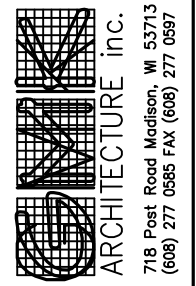
SET #3: PASSAGE SET

1 1/2 PAIR HINGES
1 LATCHSET
1 DOOR CLOSER (WHERE INDICATED)
1 WALL STOP



FLOOR PLAN
SCALE: 1/4" = 1'-0"

PLAN NORTH



1424 HIGHWAY 51
STOUGHTON, WISCONSIN 53589

of Southern Wisconsin, Inc.



Comm. No. K9621
Issued For Date
CD'S 09.24.02

FLOOR PLAN

A1.1