



SITE LOCATOR MAP

NEW CLASS III DRIVEWAY APPROACH IN ACCORDANCE WITH MADISON GENERAL ORD. SECTION 10.08(4)(TYP.)

EAST LAKESIDE STREET

EXTG NORWAY MAPLE STREET TREE TO REMAIN

25' VISION TRIANGLE (TYP.) NO VISUAL OBSTRUCTIONS BETWEEN THE HEIGHTS OF 30 INCHES AND 10 FEET.

FLAGPOLE

EXTG CRAB STREET TREE TO REMAIN

EXTG PEAR STREET TREE TO REMAIN

EXTG CRAB STREET TREE TO REMAIN

EXTG CRAB STREET TREE TO REMAIN

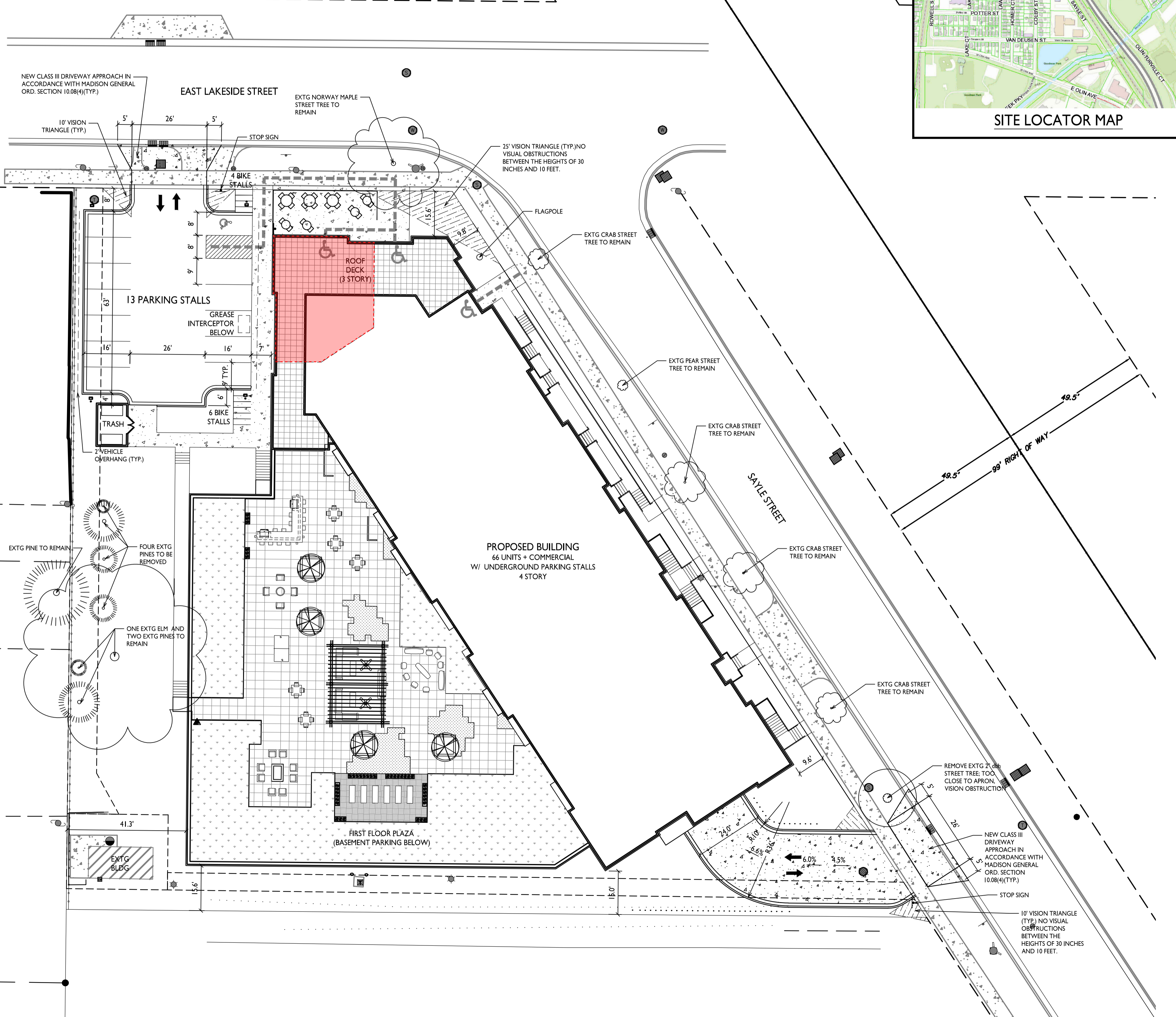
EXTG CRAB STREET TREE TO REMAIN

REMOVE EXTG CRAB STREET TREE; TOO CLOSE TO APRON, VISION OBSTRUCTION

NEW CLASS III DRIVEWAY APPROACH IN ACCORDANCE WITH MADISON GENERAL ORD. SECTION 10.08(4)(TYP.)

STOP SIGN

10' VISION TRIANGLE (TYP.) NO VISUAL OBSTRUCTIONS BETWEEN THE HEIGHTS OF 30 INCHES AND 10 FEET.



13 PARKING STALLS

GREASE INTERCEPTOR BELOW

ROOF DECK (3 STORY)

TRASH

6 BIKE STALLS

2' VEHICLE OVERHANG (TYP.)

PROPOSED BUILDING
66 UNITS + COMMERCIAL
W/ UNDERGROUND PARKING STALLS
4 STORY

FIRST FLOOR PLAZA
(BASEMENT PARKING BELOW)

SAYLE STREET

99' RIGHT OF WAY

49.5'

49.5'

9.6'

24.0'

6.0%

4.5%

41.3'

15.6'

15.0'

EXTG BLDG

EXTG PINE TO REMAIN

FOUR EXTG PINES TO BE REMOVED

ONE EXTG ELM AND TWO EXTG PINES TO REMAIN

10' VISION TRIANGLE (TYP.)

STOP SIGN

4 BIKE STALLS

5'

26'

5'

8'

8'

9'

63'

16'

26'

16'

4'

6'

4'

9' TYP.

4'

6'

10'

10'

10'

10'

10'

10'

10'

10'

10'

10'

10'

10'

10'

10'

10'

10'



knothe • bruce
ARCHITECTS

Phone: 7601 University Ave., Ste 201
608.836.3690 Middleton, WI 53562

ISSUED
Issued for Review - August 2, 2021

PROJECT TITLE
THE POST

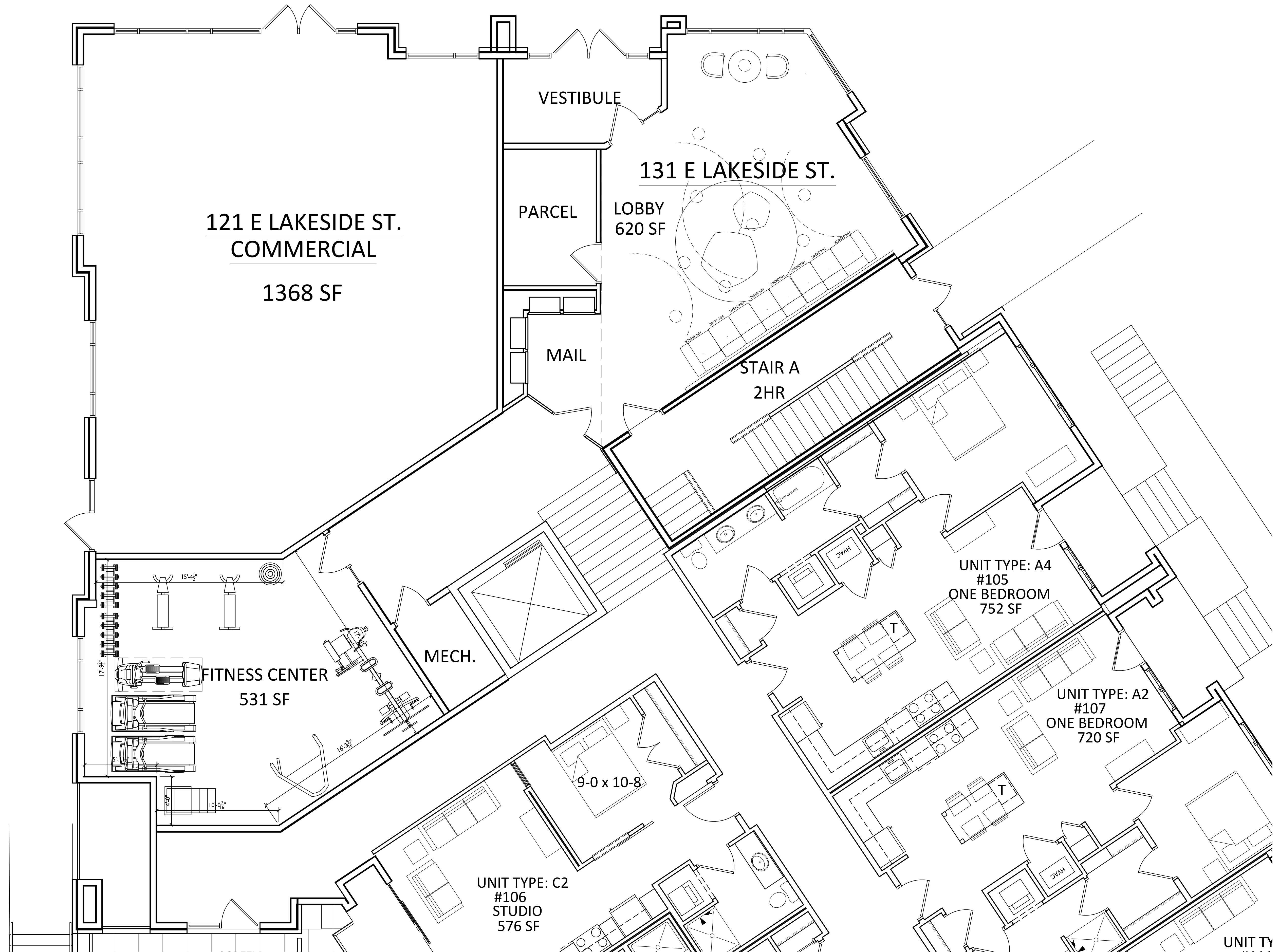
131 E Lakeside Street
Madison, WI
SHEET TITLE
**Enlarged First
Floor Plan**

SHEET NUMBER

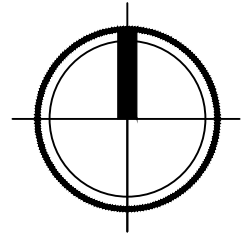
A-1.1A

PROJECT NO. **1971**

© 2013 Knothe & Bruce Architects, LLC



ENLARGED FIRST FLOOR PLAN
1/4"=1'-0"





THE POST
133 E LAKESIDE ST.
MADISON, WI
RENDERED PERSPECTIVES

