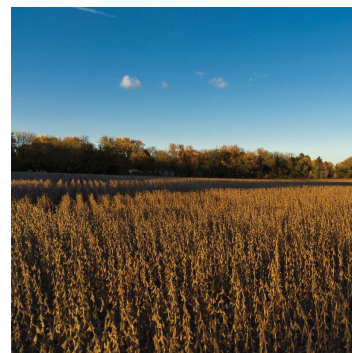
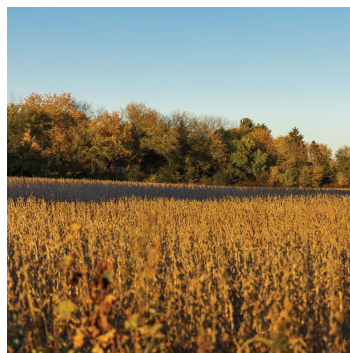
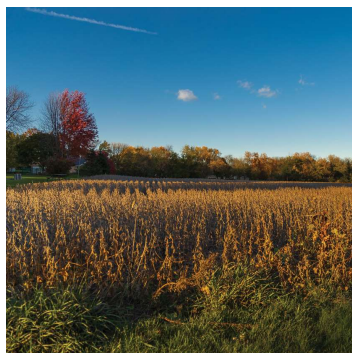




**\$1,200,000**



- ★ 9.27 Acres Zoned RR-8
- ★ Desirable residential location
- ★ High intensity residential overlay for 20+ units per acre
- ★ Great visibility!
- ★ Easy highway access
- ★ High growth area



## Information:

MLS # 1923131

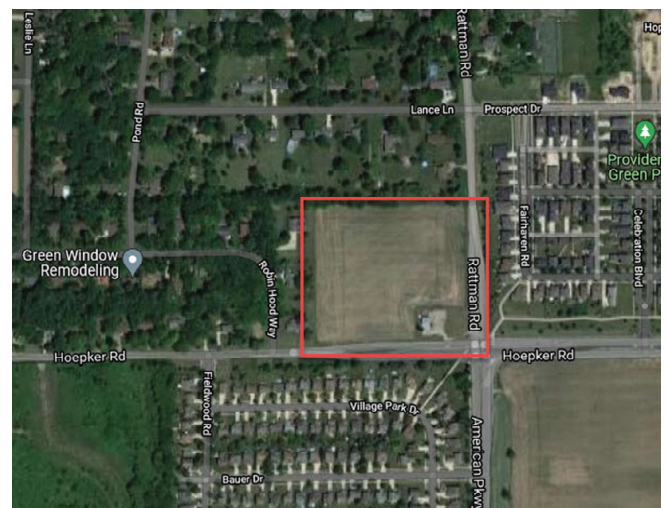
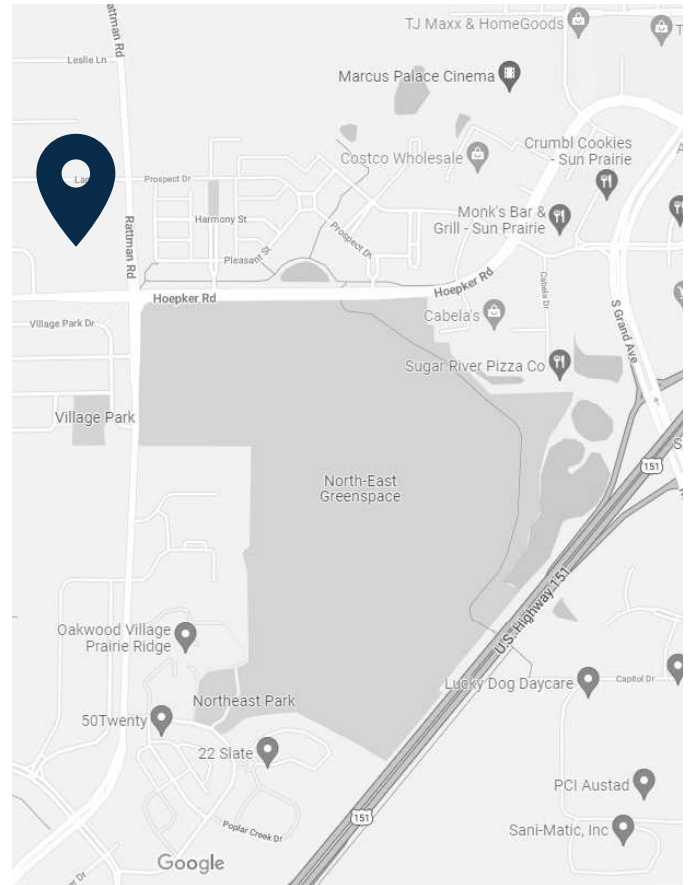
Municipal Water/Sewer nearby

Price/Acre: \$129,450

## Description:

Incredible opportunity for development! 9.27 acres of agricultural land in a prime location surrounded by single-family residential properties. Just a mile to Costco and Cabela's and very close proximity to Target, TJ Maxx and Woodmans making it an attractive property for future potential.

Surrounding area is solidly residential with a mix of higher density development and low density single-family homes. Potentially available for development soon.



*Accuracy of information is not guaranteed and should be verified by buyer if material.*